

60 HATTERAS — HATTERAS



Builder: HATTERAS

LOA: 60' 11" (18.57m)

Year Built: 1985

Beam: 18' 0" (5.49m)

Model: Sport Fisherman

Price: PRICE ON APPLICATION

Location: United States

Our experienced yacht broker, Andrey Shestakov, will help you choose and buy a yacht that best suits your needs 60 HATTERAS — HATTERAS from our catalogue. Presently, at Shestakov Yacht Sales Inc., we have a wide variety of yachts available on our sale's list. We also work in close contact with all the big yacht manufacturers from all over the world.

If you would like to buy a yacht 60 HATTERAS — HATTERAS or would like help answering any questions concerning purchasing, selling or chartering a yacht, please call +1(954)274-4435

TABLE OF CONTENTS

TABLE OF CONTENTS	2
SPECIFICATIONS	4
Basic Information	4
Dimensions	4
Speed, Capacities and Weight	4
Accommodations	4
Hull and Deck Information	4
Engine Information	4
DETAILED INFORMATION	5
Accommodations	5
Cockpit	5
Deck Equipment	5
Electronics	7
Exclusions	7
Disclaimer	7
PHOTOS	9
Main Salon	9
Salon Seating	9
Salon Bar	9
Salon Seating	9
Pilothouse	9
Pilothouse Seating	9
Galley	10
Galley	10
Dinette	10
Master Cabin	10
Master Cabin	10
Master Head	10

Hallway	11
Twin Berth Cabin	11
Guest Head	11
Twin Cabin	11
Guest Head	11
Washer & Dryer	11
Bow	12
Cockpit	12
Cockpit	12
Sun Shade	12
Cockpit Sink	12
Wing Station	12
Flybridge Controls	13
Flybridge Seating	13
Tower Controls	13
Tower Bench	13
Davit	13
Tender	13
Dinghy	14
Stern	14
Tower	14
CONTACTS	15
Contact details	15
Telephones	15
Office hours	15
Address	15

SPECIFICATIONS

Basic Information

Category: Sport Fisherman

Model Year: 1985

Year Built: 1985

Country: United States

Fly Bridge: Yes

Dimensions

LOA: 60' 11" (18.57m)

Beam: 18' 0" (5.49m)

MFG Length: 60' 0" (18.29m)

Speed, Capacities and Weight

Displacement: 82000 Pounds

Accommodations

Total Cabins: 3

Total Berths: 5

Hull and Deck Information

Hull Material: Fiberglass

Deck Material: Fiberglass

Engine Information

Engines: 2

Manufacturer: Detroit Diesel

Engine Type: Inboard

Fuel Type: Diesel

DETAILED INFORMATION

Accommodations

Standard galley-up arrangement with three staterooms and three heads forward. The master stateroom is amidships to the portside and features a walk-around queen berth with private head attached just forward. The two guest staterooms both have upper-lower berths. The stairway down to the stateroom level is hinged and can open to access a utility room area containing extra freezer and stacked washer/dryer unit as well as storage spaces. Also here is a door opening to the forward engine room. Back on the salon deck level there is a booth-style dinette to the forward starboard side of the salon, across from the galley. The galley has a bulkhead separating it from the salon and there is a full size, side-by-side refrigerator in addition to other appliances.

Cockpit

Fiberglass cockpit with non-skid deck

Walk-through transom door & gate

6 flush mounted rod holders in gunnels

2 flush mounted rod holders in each deckhouse wing

Cockpit freezer

Tackle drawer storage

Bait rigging/prep sink

Jennair cockpit grill under cover portside

Cockpit controls

4 rod rocket launcher (white)

Two 4-post fishing chairs with white ladderbacks

Cockpit flood light

Deck Equipment

Full Tuna Tower with center ladder access to upper station that has cushioned bench seat and belly band, plus a fiberglass skin buggy top.

Full Cockpit awning/shade with hinge that allow partial fold-back for fishing or cockpit vision from bridge.

Fiberglass swim platform with stainless fold-up swim ladder

Naiad Stabilizers

Marquipt 1500 low-profile davit with auto-rotation

2003 Novurania 460DL center-console tender with 90hp Yamaha outboard, also equipped with Lorance GPS/Chartplotter/depth, bimini top, swim ladder and ICOM Vhf radio.

Hatteras factory pulpit with anchor chute plus full bow railings

Electric windlass with chain wildcat, foot control pedals on bow or flybridge helm remote

Anchor with chain rode and spare nylon rode in separate deck hawser

Two fiberglass dunnage storage boxes on bow

Deckhouse has front windows

Enclosed flybridge with three windshield wipers

Remote control spotlight

Hailer/PA horn

Two trumpet air-horn on flybridge top

Emergency cannister liferaft mounted on flybridge top

Helm station (fishing) with barstool helm seat on portside rear of pilothouse

Bench seat with cushions starboard side aft of pilothouse

Aluminum railings around aft flybridge deck with 6 rod holders and comfortably pitched ladder from cockpit with composite step treads

CAY refit around 2003 included full paint job, also new at that time were the tower, railings, and davit/tender/cradle. Royal Blue hull with red boot stripe and green bottom paint - topsides are white with nameboards on deckhouse sides.

Cockpit sides have sliding track under rubrails for fender positioning

Cockpit line hawsers on transom and on gunnel top

Electronics

Furuno 72-mile color radar with Furuno Mark I radar watch unit

Furuno RD30 digital depth and data display

JRC NCR300A NavTex receiver

Trimble Navigation GPS/Loran

Furuno LCD nav display

Raytheon TriData digital display

Robertson AP100 autopilot

ICOM M-127 Vhf radio

ICOM M-604 Vhf radio

Dytek ST1000 sea water temp gauge

SEA 235 SSB radio

Simrad EC210 recording depth sounder

KVH Tracphone, Trane & Trane, F33 sat antennae dome

SeaTel Sat TV dome on tower buggy top

PC system with keyboard, mouse and flat-panel display, running navigation software

Raytheon hailer

Flat panel TV

Fax/Copier/Printer on folding decktop aft

Danforth magnetic compass

Exclusions

Owner's personal belongings.

Disclaimer

The Company offers the details of this vessel or yacht in good faith but cannot guarantee or warrant the accuracy of this information nor warrant the condition of the vessel. A buyer should instruct his representatives, agents, or his surveyors, to investigate such details as the buyer desires validated. This vessel or yacht is offered subject to prior sale, price change, or withdrawal without notice.

PHOTOS

Main Salon



Salon Seating



Salon Bar



Salon Seating



Pilothouse



Pilothouse Seating



Galley



Galley



Dinette



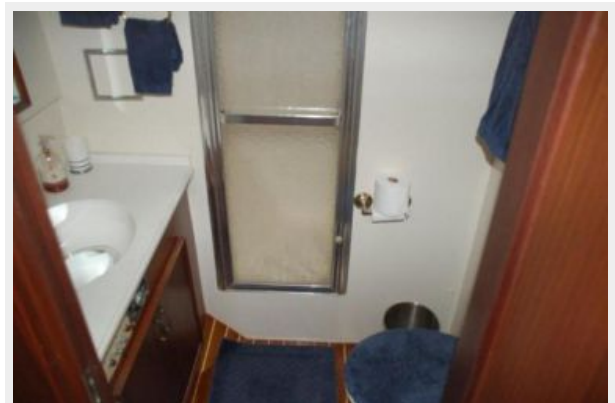
Master Cabin



Master Cabin



Master Head



Hallway



Twin Berth Cabin



Guest Head



Twin Cabin



Guest Head



Washer & Dryer



Bow



Cockpit



Cockpit



Sun Shade



Cockpit Sink



Wing Station



Flybridge Controls



Flybridge Seating



Tower Controls



Tower Bench



Davit



Tender



Dinghy



Stern



Tower



CONTACTS

Andrey Shestakov, leading yacht broker of the sales department of Shestakov Yacht Sales Inc. Shestakov Yacht Sales Inc., the official representative of the Miami/Fort Lauderdale FL headquarters.

Contact details

Email: andrey@shestakovyachtsales.com

Web: shestakovyachtsales.com/en/

Telephones

USA: +1(954)274-4435

Office hours

Monday – Saturday: **9:00 - 21:00** EDT

Sunday: **closed**

Address



Harbour Towne Marina, 850 NE 3rd St,
STE 213, Dania, FL 33004