

SHALIMAR — AZIMUT / BENETTI



Builder: AZIMUT / BENETTI

Year Built: 1994

Model: Motor Yacht

Price: PRICE ON APPLICATION

Location: United States

LOA: 118' 0" (35.97m)

Beam: 24' 0" (7.32m)

Min Draft: 0' 0" (0.00m)

Max Draft: 5' 0" (1.52m)

Cruise Speed: 12 Kts. (14 MPH)

Max Speed: 17 Kts. (20 MPH)

Our experienced yacht broker, Andrey Shestakov, will help you choose and buy a yacht that best suits your needs **SHALIMAR — AZIMUT / BENETTI** from our catalogue. Presently, at Shestakov Yacht Sales Inc., we have a wide variety of yachts available on our sale's list. We also work in close contact with all the big yacht manufacturers from all over the world.

If you would like to buy a yacht **SHALIMAR — AZIMUT / BENETTI** or would like help answering any questions concerning purchasing, selling or chartering a yacht, please call **+1(954)274-4435**

TABLE OF CONTENTS

TABLE OF CONTENTS	2
SPECIFICATIONS	4
Basic Information	4
Dimensions	4
Speed, Capacities and Weight	4
Accommodations	4
Hull and Deck Information	5
Engine Information	5
DETAILED INFORMATION	6
CONSTRUCTION	6
DIMENSIONS	6
MACHINERY	6
COMMUNICATION, NAVIGATION & ENTERTAINMENT SYSTEMS	7
GALLEY & LAUNDRY EQUIPMENT	8
TENDERS & TOYS	8
DECK EQUIPMENT	8
SECURITY, FIRE FIGHTING & SAFETY EQUIPMENT	9
ACCOMMODATIONS	9
COMMENTS	11
EXCLUSIONS	11
Exclusions	12
Disclaimer	12
PHOTOS	13
CONTACTS	17
Contact details	17
Telephones	17
Office hours	17
Address	17



SPECIFICATIONS

Basic Information

Category: Motor Yacht	Sub Category: Tri-Deck
Model Year: 1994	Year Built: 1994
Refit Year: 2015	Country: United States
Vessel Top: Open	Fly Bridge: Yes

Dimensions

LOA: 118' 0" (35.97m)	Beam: 24' 0" (7.32m)
Min Draft: 0' 0" (0.00m)	Max Draft: 5' 0" (1.52m)

Speed, Capacities and Weight

Cruise Speed: 12 Kts. (14 MPH)	Cruise Speed Range: 650
Max Speed: 17 Kts. (20 MPH)	Gross Tonnage: 130 Pounds
Water Capacity: 800 Gallons	Fuel Capacity: 4996 Gallons

Accommodations

Total Cabins: 5	Sleeps: 10
Crew Cabin: 4	Crew Sleeps: 7

Hull and Deck Information

Hull Material: Fiberglass

Deck Material: Teak

Hull Designer: Azimut/Benetti

Exterior Designer: Azimut/Benetti

Interior Designer: Disdale (England)

Engine Information

Engines: 2

Manufacturer: MTU

Model: 12V396TB94

Engine Type: Inboard

Fuel Type: Diesel

DETAILED INFORMATION

CONSTRUCTION

SHALIMAR was designed by Disdale and built by Benetti Shipyard, a sister company to Azimut. She was built to ABS classification and is currently in class. SHALIMAR features five staterooms with a luxurious on-deck master stateroom, panoramic skylounge penthouse, comfortable salon and dining area and spacious outside entertaining areas. Her interior is rich with walnut woods, elegant fabrics and beautiful Italian marbles

DIMENSIONS

General

Length Overall (L.O.A.): 118.03 feet (35.97 meters)

Beam: 24.01 feet (7.32 meters)

Draft: 5.41 feet (1.65 meters)

Capacities

Fuel Capacity: 5,310 U.S. Gallons (20,098 liters)

Water Capacity: 800 U.S. Gallons (3,028 liters)

Grey Water: 478 US Gallons (1,809 liters)

Black Water: 770 US Gallons (2,914 liters)

Speed

Maximum: 17.0 knots

Cruising: 12.0 knots

MACHINERY

Main Engines

Engine Type: (2) MTU 12V396 TB94 , @ 2,500 Hp each

Gearboxes for Main Engines: MYU's are couple to ZF gear boxed (B465) with ration of 2.7:1

Other:

- (2) PTO driven hydraulic pumps mounted on main engines. Exhaust discharge on the bottom well below the waterline through hydro-dynamically shaped outlet scoops. Polished stainless steel used extensively throughout engine room.
- Fuel: 4,996 gallons (18 885L) in 6 aluminum tanks each with its own manhole and electric level gauges.
- Water: 800 gallons in (2) epoxy coated aluminum tanks each with its own manhole and electric level gauges.
- Holding tanks: 478 gallons gray water in 3 aluminum tanks, 770 gallons black water in 3

aluminum tanks

- All holding tanks have auto pump with high level alarms.
- Watermakers Tanks; Matrix gold series 3000 2400/GPD reverse osmosis with high capacity pre-filtration and ultra violet sterilization filters: Maatrix Emerald Series Watermaker
- Centrifuge: Alfa Laval fuel

Generators & Electricity Generators elastically couple to the engine room foundations for noise and vibration suppression.

Output: 60Hz 3phase with sound shields.

Generators: (2) Northern Lights 50Kw

Shore 100Amp shore power system Connect to a 50KVA Atlas frequency converter

Power: for where there is other than 60Hz or 208V AC input.

Other: AC electrical System: 120V single phase 60Hz DC electrical System: 24V 208V 3-phase

Air Conditioning:

Type: Aqua Air chilled water, reverse cycle. (2) separate 10-ton systems, 1 system cools

Other Machinery

Stabilizers: Naiad hydraulic, 9 square feet fins.

Bow Thruster: Hydro Marine 18" tunnel driven off engine PTO, 60Hp

COMMUNICATION, NAVIGATION & ENTERTAINMENT SYSTEMS

Communication Systems

SATcom: SATCOM M with PABX system

SATTv System: SeaTel digital, gyro stabilized

Telephone System: Magnavox fax and phone

SSB: Furuno 100watt

VHF: (2) Sailor

Navigation Systems

Radar: Furuno 24mile Furuno 72mile (14111MK) color Radar w/5' antenna

Gyrocompass: Yes, with repeater on flybridge

Auto Pilot: Plath

Depth Sounder: B&G HS921

GPS: Trimble NavTrac

Weather FAX: Yes, plus ChartNav

Wind/Speed Log: B&G HS921

Echo Sounder: Furuno

Searchlight Sytems: Sanshin with controls from wheelhouse and flybridge

Other: Closed circuit TV between wheelhouse and engine room Electric horn

Entertainment System:

Video

Equipment

TV's: Sony multi-standard 25" color TV Sony multi-standard 17" TV and VCR in all guest cabins Full entertainment center in crew mess

Audio

Equipment

Stereo's: Sony audio equipment with surround sound woofer system and CD Color TV in owners stateroom with CD, cassette, stereo TV, CD, VCR, stereo in captains cabin

GALLEY & LAUNDRY EQUIPMENT

Main Galley Equipment

Cooking Equipment: Miele Microwave Miele Dual ovens with convection Miele Cook top with 4 - burner and 2 grills

Refrigeration/Freezer: (3) Miele stainless steel refrigerators

Dishwasher: Hobart Dishwasher (LX18H) commercial size with chemical rinse attachment.

Additional Galley Equipment

Refrigeration/Freezer: (2) Custom Stainless steel freezers Sub Zero Icemaker and refrigerator (Flybridge bar) Sub Zero refrigerator (Aft deck)

Other: (2) Commercial Espresso machines

TENDERS & TOYS

Tenders: 15' Novurania with 90hp Yamaha (1997)

DECK EQUIPMENT

Anchor

Windlass System: (2) Electric Sanguineti with chain gypsy

Aft Warping Capstans: (2) Aft electric deck capstans

Anchor Chain: (2) 400' 14mm Anchor chain

Boat Crane and Davits:	Electro hydraulic on tender deck with 2200 lbs capacity at 15' (Total 26')		
Passerelle:	Bitecmare stainless steel, hydraulic telescoping with teak platform. 16.6 long, stows hydraulically in starboard side aft		
Swimming Platform:	Integral transom swim platform with stainless steel safety rails		
Other:	(2) Bulwark doors each side	Side boarding "Marquipt" ladder	Chain washing system
	Removable tender chocks (10)	Fenders	High pressure deck wash systems
	Salt water deck wash system	Full flybridge controls and instrumentation with observation seating	

SECURITY, FIRE FIGHTING & SAFETY EQUIPMENT

Security Equipment:

Cameras / Side and aft decks, includes switches, (2) monitors and security system wired to all

Monitors: TV sets, high tech security locks in all main entrance doors including engine room

Fire Fighting Equipment:

Fire Control System: ABS fire fighting system

Fire Extinguishers: Portable fire extinguishers, both powder and CO2

Safety Equipment

Life Rafts: (2) 8/10 man Avon life rafts

Life Jackets: (20) lifejackets

Life Rings: (4) Lifebuoys with automatic lights

ACCOMMODATIONS

Main Deck: SHALIMAR features a large open aft deck with Built in seating and dining table for al Fresco dining. It has stainless steel framed glass doors open into the breathtaking salon which features comfortable seating to port and a fully equipped marble top bar to starboard. Formal dining is forward separated by a marble topped low level buffet and display area. The dining area is framed by overhead lighting and columns on the forward bulkhead. There is extensive storage for china and crystal. Forward is access to the below deck four guest staterooms and access to the raised pilothouse and upper deck area. The on-deck powder room is off the marble foyer. The on-deck galley is to port and features a four-burner cook top with grill against the forward bulkhead and stainless steel refrigerators and freezers against the aft bulkhead. There is an island work area to port. The galley is finished in practical high gloss white laminates with teak and holly sole. The galley is very spacious and features extensive counter space and storage. Crew quarters are accessed from the galley area staircase. There are four cabins, all with en-suites for seven crew members. Forward of this area is the on-deck Master Stateroom which is decorated in luxurious fabrics with accents of gold. The centerline king-sized bed is against the

aft bulkhead with nightstands. To port is a comfortable sofa for quiet time reading. There is a vanity opposite to starboard and a large walk-in closet with built in safe. The Master Stateroom is very spacious with such amenities as art multimedia center, icemaker and refrigerator. The Master Stateroom bath features fine Italian marble floors with lapis lazuli insets, vanity tops, large jacuzzi tub, stall shower, vanity and his and hers sinks, toilet and bidet. Lower Deck: Crew: Just aft of the collision bulkhead are two identical crew cabins with upper and lower berths, drawer storage, hanging lockers and bathrooms with stall shower. Proceeding aft is the laundry center, followed by the spacious crew mess with full galley and entertainment center. The captain's Stateroom is opposite with a queen size bed, TV, Stereo and VCR. The stateroom is very large and features a desk inboard on the centerline, hanging locker, and drawer space and en-suite bathroom with shower forward. The Engineers Stateroom is located aft of the watertight bulkhead aft of the guest staterooms. There is a single berth, desk, bookshelf, storage and bathroom with shower. The engineer's control room is to port with electrical panels and access up stairway to portside to main deck. There is an additional Miele washer/dryer in the control room. The engine room is aft of the control room, ahead of the lazarette which accommodated the new Atlas cycle converter. Guest Accommodations is located center ship, just aft of a watertight bulkhead. There are two identical twin berth staterooms, port and starboard, each with en-suite heads and stall showers. Aft is a large lobby area, followed by two additional staterooms. To port is the VIP Stateroom with centerline king bed, dresser, vanity, extensive hanging locker and storage. The VIP bathroom features a Jacuzzi tub, his and hers sinks, toilet and bidet. To starboard is the fourth guest stateroom which is currently being used as a combination office. There is a twin bed sofa set headed with a walnut table and lamp, easy chairs, desk area and en-suite bathroom with stall shower. There is a walnut bed frame for conversion to an identical VIP stateroom. Aft deck SHALIMAR'S aft deck features built in seating and teak dining table with chairs for al fresco dining. Access to the integral swim platform and also up to flybridge area is from portside staircases. Lazarette access is from the swim platform. To starboard is the stainless steel and teak Mediterranean passarelle boarding ladder. Pilothouse Access to the raised wheel house is from the owner's foyer on the starboard main deck or from the crew lobby on the portside main deck. The very modern wheelhouse contains all the electronics with easy viewing around a center console. Shipyard Period November 2012 The main freezer needed major repairs, new compressor and 4 isolation valves installed between them so if one out of two compressors fail, then the faulty one may be removed without impairing the function of the freezer.

- The master cabin sound system was replaced for a Bose sound system, one remote controls it all, cable TV / DVD / iPod
- (3) Places on the hull had to be repaired from sun blisters
- The bow locker teak wood was replaced
- Fly bridge paint job plus repairs of cracks and dents and restoration
- (2) New paddle boards
- All the shower doors base repaired from scratch and chipped paint
- (6) night stands re-varnished
- The desk in master cabin desk has been varnished in order to remove scratches
- New costume made AC frame built around the AC vents, to block the AC from venting from the bilges and circulate the air within the cabins downstairs

- (2) New Zodiac life rafts Solas approved, 12 people each
- (25) Fire extinguisher inspected, serviced and replaced (the bad ones)
- (24) AC unit costume made air filters, 5 years life time
- (2) new AC units, air handler
- New pontoons on 15 ft Novurania
- New NANO dry bilge system purchased and installed from the guest quarters to the engine room
- (5) Cotes of Varnish on Shalimar capping rail
- (6) new crew mattresses purchased last November.

Haul out July 2012:

- Out of the water ABS inspection
- Replaced all 22 ZINC ANODES
- New hydraulic hoses put in
- New Hydraulic seal on KaMewa steering Rams
- New bottom paint anti-fouling

In the last 4 years, Shalimar has had all new TV system and blue ray DVD players installed ALL NEW: bedspreads, curtains, head-liners, outside deck cushions (including around the dining table) and carpet. In addition, the main Salon couch has been recovered. The boat so the software is also relatively new.

COMMENTS

SHALIMAR was designed by Disdale and built by Benetti Shipyard, a sister company to Azimut. She was built to ABS classification and is currently in class. SHALIMAR features five staterooms with a luxurious on-deck master stateroom, panoramic skylounge penthouse, comfortable salon and dining area and spacious outside entertaining areas. Her interior is rich with walnut woods, elegant fabrics and beautiful Italian marbles.

EXCLUSIONS

- Exclusions include all of Owner's personal effects -

"All speeds, capacities, consumption, etc. are approximate or estimated; measurements can also be approximate. Specifications are provided for information only and particulars herein obtained from sources believed to be correct, but are not guaranteed. Buyer should instruct his agent and/or surveyor to check all details for accuracy. Offered subject to prior sale, price and/or inventory change, or withdrawal from the market without notification."

Exclusions

Owner's personal belongings.

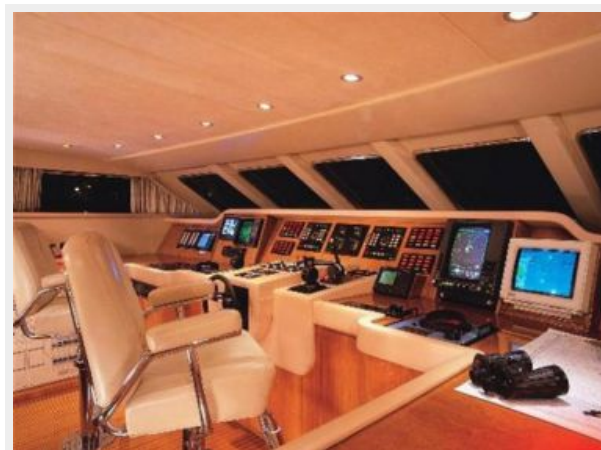
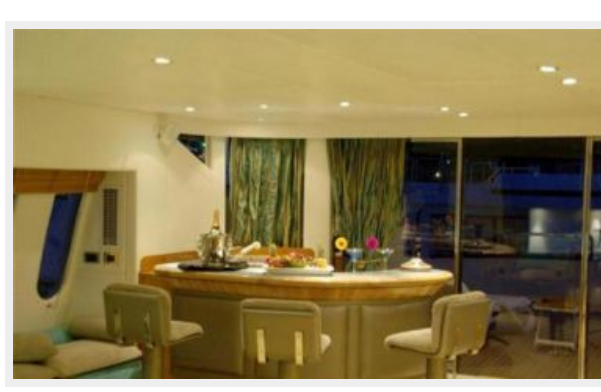
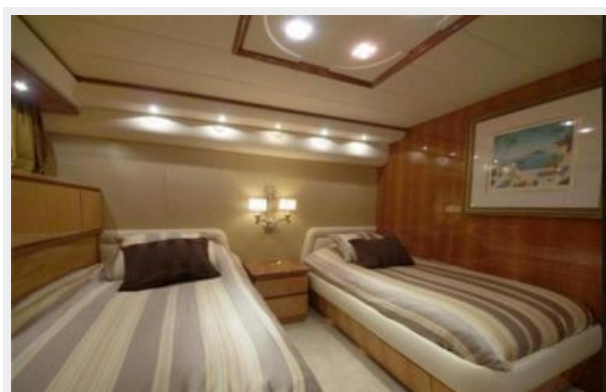
Disclaimer

The Company offers the details of this vessel or yacht in good faith but cannot guarantee or warrant the accuracy of this information nor warrant the condition of the vessel. A buyer should instruct his representatives, agents, or his surveyors, to investigate such details as the buyer desires validated. This vessel or yacht is offered subject to prior sale, price change, or withdrawal without notice.

PHOTOS









CONTACTS

Andrey Shestakov, leading yacht broker of the sales department of Shestakov Yacht Sales Inc. Shestakov Yacht Sales Inc., the official representative of the Miami/Fort Lauderdale FL headquarters.

Contact details

Email: **andrey@shestakovyachtsales.com**

Web: shestakovyachtsales.com/en/

Telephones

USA: **+1(954)274-4435**

Office hours

Monday – Saturday: **9:00 - 21:00 EDT**

Sunday: **closed**

Address



Harbour Towne Marina, 850 NE 3rd St,
STE 213, Dania, FL 33004