

HIGH COTTON — BUDDY DAVIS



Builder: BUDDY DAVIS

Year Built: 1984

Model: Sport Fisherman

Price: PRICE ON APPLICATION

Location: United States

LOA: 61' 0" (18.59m)

Beam: 17' 5" (5.31m)

Max Draft: 5' 8" (1.73m)

Cruise Speed: 26 Kts. (30 MPH)

Max Speed: 35 Kts. (40 MPH)

Our experienced yacht broker, Andrey Shestakov, will help you choose and buy a yacht that best suits your needs **High Cotton — BUDDY DAVIS** from our catalogue. Presently, at Shestakov Yacht Sales Inc., we have a wide variety of yachts available on our sale's list. We also work in close contact with all the big yacht manufacturers from all over the world.

If you would like to buy a yacht **High Cotton — BUDDY DAVIS** or would like help answering any questions concerning purchasing, selling or chartering a yacht, please call **+1(954)274-4435**

TABLE OF CONTENTS

TABLE OF CONTENTS	2
SPECIFICATIONS	4
Overview	4
Basic Information	4
Dimensions	4
Speed, Capacities and Weight	4
Hull and Deck Information	4
Engine Information	5
DETAILED INFORMATION	6
Accommodations	6
Salon	6
Galley	6
Master Stateroom	6
Master Head	7
Guest Stateroom	7
Guest Head	7
Bow Stateroom	7
Bow Head	8
Engine/Mechanical	8
Electrical System	9
Flybridge Electronics	9
Deck/Cockpit/Fishing Equipment	9
Exclusions	10
Disclaimer	10
PHOTOS	11
CONTACTS	23
Contact details	23
Telephones	23

Office hours	23
Address	23

SPECIFICATIONS

Overview

Rare opportunity to one of two 61 Buddy Davis built with a Kevlar Hull. Weight is 60,000 lbs. and has a 26 knot cruising speed! This is a captain-maintained **"FISHING MACHINE"**! Wet turbos were replaced along with exhaust manifolds. Starboard engine rebuilt in April of 2014, and recent yard visit in April of 2015 with new bottom paint applied!!! Owner is highly motivated and will consider trades of smaller vessels. ***Bring all reasonable offers!!***

Basic Information

Category: Sport Fisherman

Model Year: 1984

Year Built: 1984

Country: United States

Fly Bridge: Yes

Dimensions

LOA: 61' 0" (18.59m)

Beam: 17' 5" (5.31m)

Max Draft: 5' 8" (1.73m)

Speed, Capacities and Weight

Cruise Speed: 26 Kts. (30 MPH)

Cruise Speed RPM: 1950 Kts.

Max Speed: 35 Kts. (40 MPH)

Max Speed RPM: 2370 Kts.

Displacement: 61000 Pounds

Water Capacity: 400 Gallons

Holding Tank: 300 Gallons

Fuel Capacity: 1200 Gallons

Hull and Deck Information

Hull Material: Fiberglass

Engine Information

Engines: 2

Manufacturer: Detroit Diesel

Engine Type: Inboard

Fuel Type: Diesel

DETAILED INFORMATION

Accommodations

3 Stateroom, 3 Head, Galley Up Floor Plan With Large Salon

Salon

- Tan L-shaped lounge with storage under and tan and brown accent pillows
- teak Hi Lo table
- teak valance boards
- clear vinyl carpet runner
- speakers
- NEW Samsung 27" flat panel TV
- SMX II controls (2 units)
- Electrical panel
- SAT/TV - Direct TV
- Direct TV receiver box
- Hidden rod locker

Galley

- GE 4-Burner Flat Surface Cook Top
- Mauve Formica Counter Tops
- Whirlpool Microwave
- Sub Zero Under Counter Freezer
- Island Cabinet with Corian Top
- 2 U-Line Refrigerators/Freezers (2 Drawer Under Counter Units)
- Cabinets Painted White with teak sea Rail Trim

Master Stateroom

- Queen walk-around bed with storage under
- teak bunk base
- cabinets
- nightstands
- recessed lighting
- bunk lights
- NEW Samsung 19" flat panel TV (2008)
- SAT/TV

- SMX II A/C controls
- off-white carpet

Master Head

- Teak and holly floor
- cultured vanity top and marble sink
- recessed lighting
- Vacuflush head
- 110 head blower
- GFIC outlet
- blue wall coverings

Guest Stateroom

- Upper and lower berth
- painted wood trim
- hanging locker
- recessed lighting
- lower berth with two drawers with accent lighting underneath
- AM/FM radio
- tan and blue fabrics
- off-white carpet
- SMXII A/C controls

Guest Head

- Teak and holly flooring
- Vacuflush head
- cultured vanity top and marble sink
- recessed lighting
- 110 head blower
- GFIC outlet
- access from companionway and guest stateroom

Bow Stateroom

- Upper and lower berth
- recessed lighting in overhead
- accent toe kick lighting under cabinet and lower berth

- washer/dryer
- NEW Samsung 19" flat panel TV (2008)
- SAT/TV
- Memorex DVD player
- AM/FM stereo with CD player
- SMXII A/C controls
- dresser cabinet
- off-white carpet
- white vinyl wall coverings and padded sideliners

Bow Head

- Teak and holly flooring
- Vacuflush head
- stall shower
- 110 head blower
- GFIC outlet
- cultured vanity top and marble sink

Engine/Mechanical

- Detroit 12V92TA's w/ Chrome Kits and Walker Airseps
- Twin Disc 1.75:1 Gears
- Trolling Valves
- Marine Exhaust Linear Mufflers (2005)
- Electric Fuel Priming Pumps
- Spin-on Oil Filters
- High Water Alarms (5)
- Fireboy System
- Oil Change Pump System
- Algaex FPS500 Fuel Polishing System
- Bow A/C - NEW COMPRESSOR (2008)
- Guest A/C - NEW COMPRESSOR (2008)
- Master A/C - NEW COMPRESSOR (2005)
- Dual Racor FG1000 Fuel Filters w/ Vacuum Gauges
- Murphy Alarm Senders
- Engine Panels w/ Start/Stop/Manual Gauges
- Sea Recovery 400 GPD Watermaker
- Power Steering Pump

Starboard engine completely rebuilt April 2014 - Zero hours. 27-28 kts @2070; 26 kts @ 1950; 34.5 kts @ 2370

Electrical System

- 27KW Kilopak Generator (2240 hrs)
- 240V-50A Shoreline Inlets (2)
- 110V/220V AC Electrical System
- Sentry 12V Battery Charger
- Sentry 32V Battery Charger (2005)
- 12V/32V DC Electrical System

Flybridge Electronics

- Glendenning Electronic
- Hydraulic Power Steering
- Throttle/Shift Controls
- Furuno 15" Nav Net System/GMAP VX2 w/ XM Weather
- Northstar 6000I Sounder/Plotter
- Simrad AP22 Autopilot (Coupled to 6000I)
- Poly-Planar AM/FM/CD w/ 2 JBL 6x9 Speakers
- Murray Bros Helm Chairs
- Glendenning Sync/Low Idle/Slow Troll Modes
- Glendenning Manual Back Up Controls
- Icom M502 VHF
- Icom M302 VHF
- Raytheon ST60 Depth Finder
- Under Lounge Rod Storage

Deck/Cockpit/Fishing Equipment

- PipeWelder's 3X Outriggers
- PipeWelder's Center Rigger
- 5 Rod Holders - Flybridge Rocket Launcher
- 6 Rod Holders - Gunwale Mounted
- 32V Windlass
- Cockpit Tackle Centers w/ Sink, Refrigerated Drink Box, Freezer Drawer, and Open Storage
- Eskimo Ice Machine
- Murray Bros 130# Fighting Chair w/ Offset Pedestal
- Murray Bros Bait Prep Station/Rocket Launcher
- Transom Door
- Teak Deck
- Teak Covering Boards
- Cockpit Gunwale Lockers

Exclusions

Owner's personal belongings.

Disclaimer

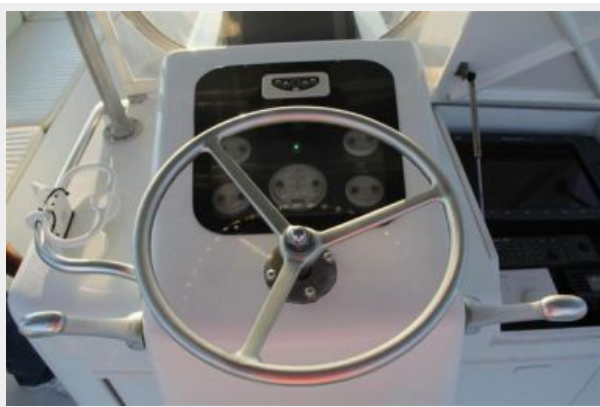
The Company offers the details of this vessel or yacht in good faith but cannot guarantee or warrant the accuracy of this information nor warrant the condition of the vessel. A buyer should instruct his representatives, agents, or his surveyors, to investigate such details as the buyer desires validated. This vessel or yacht is offered subject to prior sale, price change, or withdrawal without notice.

PHOTOS









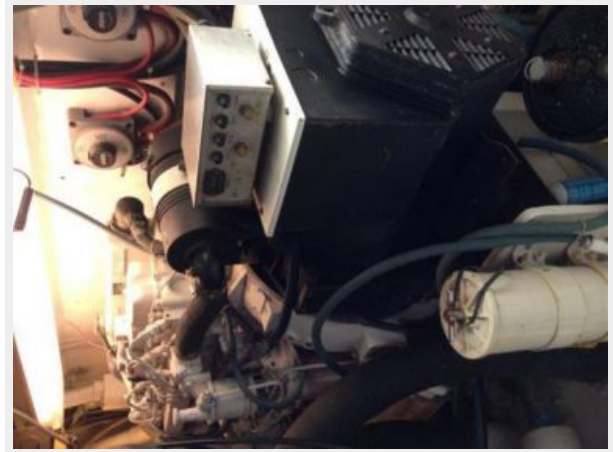


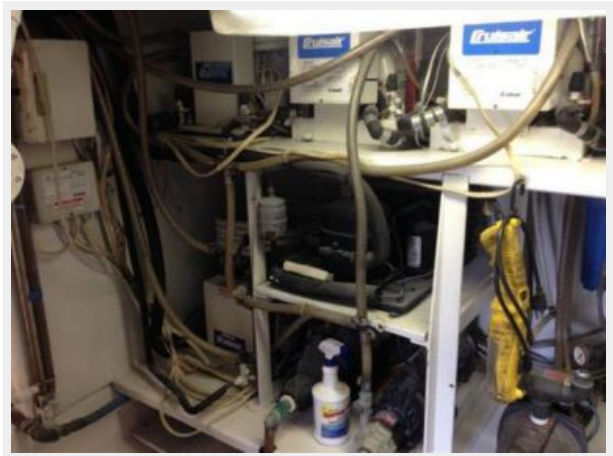














CONTACTS

Andrey Shestakov, leading yacht broker of the sales department of Shestakov Yacht Sales Inc. Shestakov Yacht Sales Inc., the official representative of the Miami/Fort Lauderdale FL headquarters.

Contact details

Email: andrey@shestakovyachtsales.com

Web: shestakovyachtsales.com/en/

Telephones

USA: +1(954)274-4435

Office hours

Monday – Saturday: **9:00 - 21:00** EDT

Sunday: **closed**

Address



Harbour Towne Marina, 850 NE 3rd St,
STE 213, Dania, FL 33004