

## GIGI II — HARGRAVE



**Судостроитель:** HARGRAVE

**Год постройки:** 2012

**Модель:** Мега-яхта

**Цена:** **ЦЕНА ЯХТЫ ПО ЗАПРОСУ**

**Местонахождение:** United States

**Длина общая:** 125' 0" (38.10m)

**Ширина:** 25' 0" (7.62m)

**Мин. осадка:** 7' 2" (2.18m)

**Макс. осадка:** 7' 8" (2.34m)

**Крейс. скорость:** 12 Kts. (14 MPH)

**Макс. скорость:** 17 Kts. (20 MPH)

Купить **GIGI II — HARGRAVE** а также выбрать подходящую вам яхту из нашего каталога яхт вам поможет опытный яхтенный брокер Андрей Шестаков. На сегодняшний день компания **Shestakov Yacht Sales Inc.** имеет большое количество яхт в собственном списке продаж, а также тесно сотрудничает со всеми крупными яхтенными производителями по всему миру.

Для того чтобы купить яхту **GIGI II — HARGRAVE** а также проконсультироваться по любому вопросу связанному с покупкой, продажей, чартером яхт позвоните по телефону **+7(918)465-66-44**.

# ОГЛАВЛЕНИЕ

ОГЛАВЛЕНИЕ	2
ХАРАКТЕРИСТИКИ	4
Обзор	4
Основная информация	4
Размеры	4
Скорость, вместимость и масса	4
Размещение	5
Корпус и палуба	5
Информация о двигателе	5
ПОДРОБНОЕ ОПИСАНИЕ	6
Vessel Walkthrough	6
Designer's Remarks	6
Salon	6
Galley	8
Day Head	8
Port, Starboard Hall and Dog House	8
Pilothouse	9
Lower Foyer and Stairs to Guest Staterooms	9
Master Stateroom	9
VIP Stateroom Forward	10
Port and Starboard Guest Staterooms	10
Crew Lounge and Cabins	11
Aft Deck	11
Fly Bridge	11
Interior Equipment	12
Appliances	13
Audio And Visual Equipment	14
Electronics	15

Exterior Equipment	15
Mechanical Equipment	16
Factory Installed Equipment	17
Remarks	18
Исключения	18
Отказ от ответственности	18
ФОТОГРАФИИ	19
КОНТАКТЫ	30
Контактная информация	30
Телефоны	30
Время работы	30
Адрес	30

# ХАРАКТЕРИСТИКИ

## Обзор

**PRICE REDUCED FROM \$13,900,000 FOR IMMEDIATE SALE DURING THE MIAMI YACHT & BROKERAGE SHOW FEBRUARY 12 - 16, 2015** Are you are in the market for a yacht in the 110'-130' size range? If so, this new 125' Hargrave Raised Pilothouse should be on your must see list. Her interior was rated best-in-show after Fort Lauderdale with magazine editors using words like "stunning" and "magnificent" to describe the over all effect created by Yacht Interiors by Shelley. A full displacement world cruising yacht, she combines four king sized suites, an open and expansive deck plan with trans-Atlantic range that will make your next boating adventure the experience of a lifetime.

## Основная информация

<b>Тип судна:</b> Мега-яхта	<b>Модельный год:</b> 2013
<b>Год постройки:</b> 2012	<b>Страна:</b> United States
<b>Верх:</b> Hardtop	<b>Открытая палуба мостика:</b> Да

## Размеры

<b>Длина общая:</b> 125' 0" (38.10m)	<b>Ширина:</b> 25' 0" (7.62m)
<b>Мин. осадка:</b> 7' 2" (2.18m)	<b>Макс. осадка:</b> 7' 8" (2.34m)

## Скорость, вместимость и масса

<b>Крейс. скорость:</b> 12 Kts. (14 MPH)	<b>Макс. скорость:</b> 17 Kts. (20 MPH)
<b>Вместимость воды:</b> 700 Gallons	<b>Объем топливного бака:</b> 8000 Gallons

## Размещение

Всего кают: 4	Всего коек: 4
Спальные места: 8	Всего ком. состава: 5
Каюта капитана: Да	Каюты экипажа: 3
Койки экипажа: 6	Спальных мест экипажа: 7
Комм. состав экипажа: 3	

## Корпус и палуба

Материал корпуса: Fiberglass	Материал палубы: Fiberglass
Комплектация корпуса: Semi-Displacement	Цвет корпуса: White
	Отделка корпуса: Stainless Steel
Дизайнер интерьера: Yacht Interiors by Shelley	

## Информация о двигателе

Двигатели: 2	Производитель: Caterpillar
Модель: C-32	Тип двигателя: Inboard
Тип топлива: Diesel	

---

# ПОДРОБНОЕ ОПИСАНИЕ

---

## Vessel Walkthrough

---

Created for those who like to entertain on a grand scale, every room and every design detail has a larger than expected feel to it. The combined effect ensures this luxury yacht will have that “wow” factor which knowledgeable upscale owners demand.

With her European styling incorporating full “wrap-around” windows she has luxurious accommodations for eight guests. As with all Hargrave yachts, the new 125’ Raised Pilothouse is built to the highest quality and safety standards. She is ready for her new owners to step aboard and begin their adventures now!

Powered by Twin Caterpillar C-32 ACERT, 1825hp Generators: Two Caterpillar 44kw w/Soundshield & water drop exhaust Architecture: J.B. Hargrave Yacht Design Interior Designer: Shelley DiCondina of Yacht Interiors by Shelley

## Designer's Remarks

---

### Design Influences and Color pallet:

The objective for this project was to create a contemporary interior with great balance, clean, sophisticated cabinetry lines with an enduring appeal; for charter or private use. The combination of contrasting surfaces of Gloss Walnut wood, Espresso and Taupe Zebra veneer accents, Sculptured glass and Cream Kaduna Marble (Royal Oyster) creates an abstract and sculptural impression that is truly refreshing. All the guest and social areas are generously proportioned and are perfectly appointed.

## Salon

---

The Main Salon goal was to create a glamorous and contemporary salon that was inviting and aesthetically pleasing. It was imperative we maintained symmetry in the room. This was accomplished by repeating details in the built in cabinets and again in the dramatic ceiling soffits. The upholstered custom pieces are luxurious, plush and have a clean, chic style.

At the aft entrance the flooring is slabs of Cream Kaduna marble. On either side of the entrance foyer there are large squared corner cabinets that define and strengthen the space. The Starboard squared cabinet is the bar, complete with all the required storage, ice and sink etc and completely invisible when closed up. The Port cabinet disguises the crew companionway on the outside of the vessel. Both of these cabinets have gorgeous 44” mirrored recesses with marble

shelves and sculptures from Hebi. Looking forward to the Dining Salon there is a center cabinet with a TV and cabinet with a panel of Art Glass.

**Main Salon/Dining Features:**

Gloss Walnut Wood

Espresso and Taupe Zebra accents

(2) 10' Sofas

60' s/f of entrance Marble Cream Kaduna

60" TV on Hi/Lo

Art glass panel Salon/dining console

(8) Dining Chairs/Custom Designed

Soffit designs w/ dramatic corner details

Center opening door glass on aft

(2) Mirrored Art niches 44' high

Perimeter Walnut Crown/AC grill

Etched glass privacy doors port and star.

**Main Salon/Dining Fabric and Furnishings:**

Sofa Fabric- JF Fabrics/Champion

Lounge Chairs and Ottomans- JF Fabrics/Drama

Dining Chairs- Custom Design/YIBS-Highland Court - 180978/H509

Dining Table- Custom Design/YIBS- Walnut with Zebra band

Roman Shades- Globaltex/Fortuna-Mocha

Throw Pillows- Glant/Couture Basket Weave-Limestone

Throw Pillows- Beacon Hill/Romandie-Tourmaline

Cabinet Hardware- Sagastune/Satin Nickel Push Pulls

Lighting/recessed- Cantaluppi/Satin Nickel

Lamps (4) - Sonneman-Plinth/6055.50 Blk Nickel

---

## Galley

The galley was designed to be not only a professional food preparation area but an area for social gatherings. The room is finished in the same fine quality wood, hardware and craftsmanship as the rest of the vessel. The galley has tons of counter space and has a true walk in pantry 3' x 4'. We also wanted this area to have lots of daylight; (3) sides are windows and there is a large comfortable settee forward with seating for (8). There is a large center island that has a second sink, ice maker, recycling station, additional subzero refrigerator drawers and 132' sq. /feet of storage. **Galley Furnishings:** Counter tops- Aurora Granite Flooring- Porcelanosa-V50915001(Porcelain plank wood design in driftwood color) Cabinetry- Gloss Walnut Appliances- Subzero and GE Hardware- Square Brush nickel/Push Pulls by Lamp Lighting- Brush Nickel/Cantaluppi Settee- Textillery- Barcelona 51 Ivory Leather Bar Stools- Textillery- Barcelona 51 Ivory Leather Sink- (3) Franke Faucets- (1) pot filler/ grohe, and (3) Lady Lux/Grohe satin nickel

---

## Day Head

The Day Head was designed around the fabulous Graff faucet which is a 39" high satin nickel wall mount fixture. We wanted frame this beautiful fixture with a back drop of marble just a few inches wider than the water supply and create not only a place to wash up but a functional piece of art. The sensuously curved metal slopes gently down to the custom swirl chocolate vessel sink truly accomplishes this. The flooring is a solid slab of marble with ¾" square Stainless Steel tiles sprinkled about and inlayed.

**Day Head Furnishings:** 48" w Asymmetrical Walnut Cabinet Cream Kaduna Marble Vanity Sculptural Brush Nickel faucet Vertical marble wall panel behind faucet Mirrored ceiling Gloss Walnut walls and cabinets Sink- Virgo/Sintra-Espresso vessel Faucet- Graff/Luna satin Nickel 39" high Flooring- Cream Kaduna with SS inlay 1" x 1"

---

## Port, Starboard Hall and Dog House

The Starboard hallway is the passage to the day head, galley, pilot house and VIP. We designed the hallway floor to be visually a piece of abstract art. The main color is Cream Kaduna marble and the liner inlays are Pearlato Suevo. On the Port side we repeated the same floor design as this is the entrance to the guest stairs and forward to the on deck Stewardess walk in pantry and laundry facility. There is also an additional wine cooler with storage for 132 bottles.



The dog house/laundry also has its own dedicated AC unit and lots of preparation and folding area for the Stew. **Port, Starboard Hall and Dog House Furnishings:** Hall Flooring- Cream Kaduna and Pearlato Suevo marble Cabinetry- Gloss Walnut Washer- GE 3.1 cubic feet/front load Dryer- GE 5.7 cubic feet/front load Sub Zero Wine Cooler- 427G 132 bottles Dog House Flooring- 4" teak planks

## Pilothouse

The pilot house was designed to be multi-functional. It is a serious helm station with a Stidd chair for the Captain, complete with a Captain's desk and lots space for filing correspondence. It was also designed to be an area the owners and guest can hang out while traveling or in the evening congregate on the deep overstuffed club style sectionals with a 270 degree view outside. The plush upholstered walls and extra-large throw pillows add to the fun atmosphere. **Pilot House Furnishings:** Helm Chair- Stidd-Ultraleather/Milkweed Sofas- J. Robert Scott-Myconos/Mica w/Ebony Handrails- Textillery- Barcelona 51 Ivory Leather on Stainless Throw Pillows- RM Coco-2010CB/Cork Throw pillows- RM Coco-WO83112/12 Wall Upholstery- Majilite-Legend/Elegance cream Floor- 4" Teak Planks

## Lower Foyer and Stairs to Guest Staterooms

The stair descending to the guest area was designed to have an easy and open feeling. The entrance at the top of the stairs is open to the Starboard Hallway and has a small balcony and open railing of art glass and SS. As you get closer to the lower foyer the stairs open up from 36" wide to 54" and the last few steps create a large semi-circle and grand entrance to the foyer. The stairs are perfectly centered on the mirrored console top with a thick 5" slab of Cream Kaduna surrounded by mirror. On top of the console is a fabulous sculpture that reflected in the mirror. The foyer floor is a beautiful composition of Marble with a contemporary design of stainless strips inlayed. All (4) corners of the foyer were designed for specific storage; linens, towels, refrigeration and beverages and cleaning supplies. **Lower Foyer and Stairs to Guest Staterooms Furnishings:** Wall Upholstery- Majilite-Legend/Elegance/Cream Flooring- Kaduna Cream Marble with custom SS inlays Console- Gloss Walnut w/ Kaduna Cream Marble 4" frame around mirror Ceiling- Perimeter crown with large open semi-circle. Handrails- Textillery- Barcelona 51 Ivory Leather w/ SS Refrigerator- Uline 1175R

## Master Stateroom

The master suite was designed to follow and complement the main salon aesthetics. The bed was designed to be center of attention. All the other components in the room have only one task; to frame the bed and amplify the luxurious surroundings; fabulous cabinetry details and craftsmanship. The headboard wall continues the dramatic design elements with 18" wide vertical panels of the Zebra placed horizontally 60" high over each nightstand. The center of the headboard wall is upholstered and ties into the detailed ceiling soffit that mimics the MS soffit

and frames the bed. **Master Stateroom Fabrics and Furnishings:** Wall Upholstery - Majilite-Legend/Elegance/Cream Flooring- Wool carpet Sconces- Fine Art 790050 Bedspread and Shams-JF Fabrics/Champion Euro Shams- J Robert Scott/Cannon Plaid/Celadon Neck Roll-Kravet-Rufiji/Fieldstone Roman Shades- Kravet-9774-16 (Linen and silver Lurex) Lighting- Cantaluppi/ Satin Nickel **Master Bath Features:** The master bath is a “His and Hers” layout with a center large shared shower. The vanities are both very large with sconces centered in pairs on each mirror for proper viewing. The heads are out board in each bath and have a unique privacy glass panel. The marble theme is repeated again in here of Pearlato Suevo and Cream Kaduna with Stainless inlays. There is abundant storage and plenty of lighting; natural and daylight. **Master Bath Furnishings:** Sconces- (4) Ashley21309 Cabinets- Gloss Walnut Flooring- Cream Kaduna with Pearlato Suevo and SS inlays Vanity Top- Pearlato Suevo w/ 4” front edge Privacy Panel- Art Glass Shower- All marble with dual entrance and recessed bath items storage.

## VIP Stateroom Forward

The VIP is forward of the galley in the Bow. It has its own private entrance and stairway. It was designed to have all of the same storage and aesthetic details but has an extra feature of being forward away from the other guests which affords more privacy. The stateroom has dual closets of 3’+ each, a large dresser with (8) drawers and lots of other storage. This room was designed also to have its own unique features on the headboard which is a criss-cross design of horizontal and vertical zebra wood. **VIP Forward Stateroom Fabrics and Furnishings:** Wall Upholstery - Majilite-Legend/Elegance/Cream Flooring- Wool carpet TBD Lamps- Cantaluppi/SN Bedspread- JF Fabrics-Bombay/93J4841 Euro Shams- Beacon Hill/Flash Point/Silver Screen T.Pillows - Lee Jofa-Gp&GB-Fretwork/Teal Roman Shades- RM Coco Wilco/Linen Lighting- Cantaluppi/ Satin Nickel **VIP Forward Bath Features:** The VIP bath is all marble of Cream Kaduna with Emperador Dark features. The bath has a dual rectangular sinks and tons of storage. The vanity is uniquely designed to a combination of open storage and enclosed with lots of drawers. The floor is beautiful with an inset border of Dark Brown marble. Outboard, under the porthole is an expansive counter top with additional storage and vanity space. **VIP Forward Bath Furnishings:** Flooring- Cream Kaduna Marble with Emperador dark inlay Vanity Tops- Emperador Dark Marble Sconces- (2) Ginger 2881SN Cabinets- Gloss Walnut Shower- Glass Frameless door with Emperador Dark footrest/seat

## Port and Starboard Guest Staterooms

The Guest Stateroom’s were designed to meet ever need of your visiting guests or family. There are large TV’s with Armoire style entertainment cabinets. Outboard is a generous curved settee for lounging and next to it a very well-appointed 5’ closet; complete with shoe racks, additional drawer space and lots of hanging space. At first view the bed is a delightful king size with beautiful details of upholstery and Zebra wood. The beds are also converted to twin beds easily and have complete walk around capability in either position. They also have wide lower drawers for all of the extra bedding so it does not take up space in the guest closet. **Port and Starboard Guest Staterooms Fabrics and Furnishings:** Wall Upholstery - Majilite-

Legend/Elegance/Cream Flooring- Wool carpet Lamps- Sonneman-Mitra/SN Bedspread- Maxwell-Neo/#4Stone T.Pillows - Starboard.-Rodolph/MMW/8350H T.Pillows- Port-Romo/Casca Hemp Roman Shades- Starboard-RM Coco-Live Dust Roman Shades- Port-Duralee- 14225/Taupe Lighting- Cantaluppi/ Satin Nickel Guest Baths- Marble Floors and Vanities Cream Kaduna

---

## Crew Lounge and Cabins

The crew area is aft and has an enclosed entrance from the port deck and an entrance from the stern. There is a crew settee and table area with a TV. There is also a small kitchen area with a cabinet storage, sink and a tall refrigerator. This area also has a washer/dryer for crew use. The captains' stateroom is truly a suite and has a dresser, work station, 42" flat screen TV, large double door closet, queen bed with full walk around and a hidden Pullman bunk for an extra crew during deliveries. The captain's suite also has a private bath. The other (2) crew staterooms have (2) twin bunks each and a private bath. **Crew Area Furnishings:** Accommodations- (3) Staterooms, (3) baths, lounge area and kitchenette. Flooring- Teak Walls- Gloss Walnut Counter tops- Aurora Granite Washer/Dryer- GE 2700 Refrigerator- GE GSCS3KGYSS Sink- Kohler/Compass

---

## Aft Deck

The Aft Deck was designed to be an area that could house a large group for relaxing or dining. The table seats (14) for dining and the center section can be removed to create (2) cocktail tables for a more casual event. There is a 32" flat TV behind the professionally equipped bar and with (4) contemporary square bar stools. The bar stools and the bar are upholstered in a pale mist tone Aqua Leather outlined by polished stainless steel. The bar top is a beautiful gloss teak and the floor is also teak; but was left natural. **Aft Deck Furnishings:** Settee and Teak Chair cushions- Fabric Tent/Sail cloth/Shara Bar Stools- Spinneybeck Aqua Leather/Mist 606 Bar Front- Spinneybeck Aqua Leather/Mist606 Bar Top- Gloss Teak Aft Table- Gloss Teak 126" x 56" Throw Pillows- Delaney and Long- Tender/Mist Ice Maker- Uline- CLR 2160 TV- 32" Aquios Stairs- Custom SS spiral stairs to Fly Bridge. Ceiling- 7'-9" Headroom

---

## Fly Bridge

The steering station is on the starboard side with a double bench. There is another double bench on the port side; both facing forward. This area was also designed with many of the same thoughts as the aft deck; large groups, dining or relaxing for (14), a professional service bar with seating for (6). Aft of the bar is a cooking station that has 16 linear feet of preparation or buffet surface and under this is (2) Subzero refrigerator drawers, 30" ice cooler for beverages, electric grill, gas grill, utility sink and lots of storage. The decking under cover is teak in its natural state. Across from the buffet area is a large spa tub with its own small bar with (2) bars stools facing the spa for intimate conversations. There is also a large sun pad with deep storage underneath it.

Then aft of all this are (4) lounge chairs with small side tables. **Fly Bridge Furnishings:**  
 Refrigeration- (3) Subzero drawers 700BR Ice maker- Uline CLR2160 Wine Cooler- Uline  
 2175WC Freezer- (2) Edgestar-FP860 Grill- TBD Cook Top- Elag BGR530426 Spa Tub- Spa  
 City Sunbelt/Apollo Flooring- Teak Natural Bar Stools- (8) Custom SS w/ Majilite  
 Ovation/Cappuccino Helm Benches- Custom SS w/ Majilite Ovation/Cappuccino Settees- Fabric  
 Tent-Dupion/Sand Throw Pillows- Bangladesh/Dune w/Samuel and Sons-Firewood trim Throw  
 pillows- Great Outdoors-Aqua Velvet/Coco

## Interior Equipment

Interior Walnut wood Majlite upholstery Leather Wrapped Hand Rail for Stairway to access VIP and other Guest Cabins from Main Deck (2) additional customized Stainless Steel Hand Rail with Leather wrapped in P/H Upgrade to Leather wrapped Hand Rail for Stairway to access P/H from Hallway Custom hardwood edge with recess throughout the vessel Custom crown molding throughout vessel Additional Decorator Pillows (51) Vimar Electrical switches w/ 21 Dimmer switches Cantalupi Matte Brushed Nickel Wall Lamps in VIP, Port & Stbd Guests Nutone CV450 Central Vacuum System w/ 8 outlets SanDam K-Pro insulation between VIP wall and Master Cabin (5) Safes in Cabin WDI sound proof floor in galley Under mount sinks for galley and on deck head (2) Custom Bar Stools in Galley Rev-A-Shelf Chrome blind corner pullout shelf with full extension in Galley Rev-A-Shelf white Recycling Bins/Center with heavy duty drawer slides and full Extension in Galley Headhunter ( 9 ) heads each Awl Grip finish in shower stalls (total 6) Marble Floor at entry of Salon from Aft Deck Marble Top Niches of Salon Marble counter Top of Port and Stbd side of Dining Table in Salon Marble Top of Fwd Console Top of Salon Marble Bar Top for Stbd Aft Bar in Salon Marzi Sink PD Undermount Bone Sink in Salon Grohe Allure 32128 000 Faucet in Salon Mirror ceiling in Day Head (1) Virgo Sintra Espresso Sink in Day Head (1) Graff Luna Satin Nickel Faucet in Day Head 7" Wide Marble on the wall behind Day Head Faucet (1) Graff Satin Nickel Towel Ring (1) Graff Satin Nickel Toilet Paper Holder (1) Grall satin Nickel Robe Hook Specialty Wall Covering in Day Head Marble Day Head Floor with Stainless Steel Inlays per Floor Design Install custom angled shoe rack inside Master closet x 2 Granite Top Nightstand in Master ¾" Platinum Vinyl Strips for Bed Head Board in Master Stateroom Marble Shower Seat in Master Shower Marble on Shower Walls & Floor in Master Head Specialty Stainless Steel Floor Inlay Ties on the Marble Floor of Master Bathroom (2) Textured Glass panels next to port & stbd side of toilet in Master Bathroom (3) Shelves in Niche with Sea Rail in Master Bathroom Shower (4) Ashley Lighting 21309 brushed Nickel Sconces in Master Bathroom Marble Night Stand top at VIP Marble shower and floors in fwd VIP Marble Bathroom and Shower Floor in VIP Bathroom Marble Shower Seat in VIP Shower (2) Kohler Sinks in VIP Bathroom Graff G-2301 Satin Nickel Sink Faucet in VIP Bathroom Grohe 27 010 3000 Brushed Nickel Shower System in VIP Shower Marble Night Stand Top at Port Guest Marble Shower Seat in Port Guest Bathroom Shower Marble Shower Floor in Port Guest Bathroom Marble Bathroom Floor in Port Guest Bathroom Add Sliding Mechanism to allow (2) Single Beds to slide for Port & Stbd Guest Cabins Marble Night Stand Top at Stbd Guest Marble Shower Seat in Stbd Guest Bathroom Shower Marble Shower Floor in Stbd Guest Bathroom Marble Bathroom Floor in Stbd Guest Bathroom Glass door for master shower, VIP and both

guest cabins (1) Ginger 504L Soap Caddy in VIP, Port & Stbd Guest Shower (1) Ginger 505 Shampoo Caddy in VIP, Port & Stbd Guest Shower Graff G-2301 Satin Nickel Sink Faucet in VIP, Port & Stbd Guests and (2) Master Bathrooms (1) C.R. Laurence shower Door Handles in VIP, Port & Stbd Guest and (2) Master Bathroom Graff Satin Nickel Towel Bar in VIP x 3, Port Guest x 2, Stbd Guest x 2 and Master x 4 Bathroom (1) Equip Satin Nickel Toilet Paper Holder in VIP, Port and Stbd Guests and (2) Master Bathroom (1) Satin Nickel Robe Hook in VIP, Port & Stbd Guest and (2) Master Bathroom U-Channel Hardware for Shower Glass Walls in Marble of VIP, Port & Stbd Guest and Master Bathroom Shower (2) Ginger 2881 Satin Nickel Sconces in VIP Port & Guest Bathrooms Grohe Aquatower 3000 Shower System in Master, Port & Stbd Guest Showers Kohler Verticyl K-2882-96 sinks in Port & Stbd Guest bathrooms Drain cover in VIP, Master, Port & Stbd Guest Framed Mirror for dresser in Captain Kohler Ladena K-2214 Sink in Captain, Fwd, Crew Bathroom Granite Shower Seat in Captain Shower (4) fold down TV in Fwd. and Aft Crew Cabins Teak Panel Flooring in Captain and Crew Cabins and Lounge (6) S.S. Cantalupi Ragno Reading Lights in Captain, Fwd & Aft Crew Granite Shower Seat in Fwd. Crew Shower Kohler Compass K-2298-96 Sink in Aft Crew Bathroom Granite Shower Seat in Aft Crew Shower Marzi PD:48 100R Bisque Sink in Crew Lounge (1) Grohe 33153 S/S Sink Faucet in Crew Lounge Upgrade to Hi/Low Table with a cushion for putting cushion on table top and settee to be used as a bed in crew lounge Upgrade to Granite Crew Lounge counter top Marble Frame with Mitered corners for Lower Foyer Marble Foyer Floor with Stainless Steel Inlays Marble Hallway Floor Port & Stbd side per Hallway Flooring Design Three custom sliding doors in Port and Stbd. side hallway Headliner fabric is General Plastic Voyager Mystic off white 422773 with tricot foam backing-200 yards DANFORTH compass 5" in upper helm (1) Stidd Slimline Low Back Stainless Steel Helm Chair with Cupholder in Pilot House

## Appliances

U-Line CLR2160 Black Ice Maker in Main Salon Dometic CR-1110U/F Fridge in Lower Foyer Sub-Zero BI-42 S/S Refrigerator in Galley (2) Sub-Zero 700BR White Refrigerator Drawers in Galley U-Line CLR2160 S/S Ice Maker in Galley GE Profile PP975BMBB Black Cook top & GE Profile PT916SMSS S/S Oven in Galley GE Profile JV930SCBR S/S Hood in Galley GE Profile PVM1870SMSS S/S Microwave in Galley GE Profile GDWT160RSS S/S Dishwasher in Galley GE Profile GCG1580RSS S/S Trash Compactor in Galley (3) GE Profile GFC720F Satin Nickel Disposals in Galley (3) Incinerator Sink Top Switch Satin Nickel Disposal Switches in Galley Franke KBX120-43 S/S Sink in Galley (2) Blanco 157-140 ST S/S Hand Spray Faucets in Galley Incinerator F-HC1100 Satin Nickel Instant Hot Dual Temp. Faucet in Galley Incinerator SST-FLTR S/S Instant Hot Tank & Filter in Galley Franke GNX-110-16 S/S Island Sink in Galley Grohe LadyLux PRO31042 SDO Satin Nickel Pot Filler in Galley Grohe Atrio 20 074 AVO Satin Nickel Island Faucet in Galley GE WSXH208HWW White 120V/60HZ Washer in Doghouse GE DSXH43EFWW White 120V/60HZ Dryer in Doghouse Sub-Zero 427G Classic Stainless Wine Cooler in Doghouse GE Profile PSIC5RGXBV Black Fridge in Crew Lounge Panasonic NN-SD3773 S/S Microwave in Crew Lounge GE WSM2700DWW White Washer/Dryer in Crew Lounge SUB-ZERO UC-15I W/O Drain Pump Overlay Panel-FRP Ice Maker on Aft Deck U-Line 2175WC Wine Cooler on Flybridge (2) Sub-Zero 700BR White FRP Face Fridge by Hot Tub on

Flybridge SUB-ZERO 700BR White FRP Face 115V AC/60HZ Fridge Drawers behind Bar in F/B SUB-ZERO UC-15I W/O Drain Pump Overlay Panel-FRP 115V AC/60HZ Ice Maker in F/B U-Line CLR2160 Black 115V AC/60HZ Ice Maker in Flybridge Fire Magic 3C-S1S1P-A deluxe S/S Gas BBQ Grill in Flybridge Edgestar FP800 Grey 115V AC/60HZ Freezer in Flybridge

## Audio And Visual Equipment

Shakespeare 2030 TV Antenna mounted @ Hard Top Shakespeare 2025 CP Controller mounted @ Pilot House Digital 500 Series 8Ft AM/FM Antenna Concord TV Distribution Board with AM/FM KVH 2011 Tracvision HD7 USA in M9 Dome KVH 2011 Tracvision M9 Empty Dome Edson 6" Tower for KVH M9 x 2KVH HD7 Tuner Exp Kit Samsung UN60D8000 mounted @ Main Salon Motivated Design 65" PLSM/LCD Popup Lift Bot Mount Motivated Design Remote Kit Vimar Wall DC Relay Bose Lifestyle V35 White Flush mounted @ Main Salon Samsung BD-D6700 3D Blu-ray Player mounted @ Main Salon DirecTV HD DVR Receiver – Lease mounted @ Main Salon Tripp Lite HTR07-1U mounted @ Main Salon Middle Atlantic Sliding Rack Assembly mounted @ Main Salon Speakercraft Accufit CRS7 One mounted @ Dining Area and Salon x 2 Bose SA-2 Stereo AMP 120V Black mounted @ Dining Area and Salon Bose RC-355 V Class Remote RF mounted @ Dining Area and Salon JL Audio M770 CCX Marine Speaker – White mounted @ Aft Deck x 2 Bose SA-3 Lifestyle Stereo Amplifier mounted @ Aft Deck x 2 Bose RC-355 V Class Remote RF mounted @ Aft Deck Speakercraft Accufit CRS7 One mounted @ Pilothouse x 2 Bose SA-3 Lifestyle Stereo Amplifier mounted @ Pilothouse Bose RC-35S V Class Remote RF mounted @ Pilothouse Samsung 32" HD LED TV UN32D6000 mounted @ Galley Concord TV Mount mounted @ Galley DirecTV HD DVR Receiver – Lease mounted @ Galley Samsung BDC5500 Blu-ray Player mounted @ Galley Sonance FS-23 IPOD Dock mounted @ Galley Bose SA-3 Lifestyle Stereo Amplifier mounted @ Galley x 2 Bose RC-35S V Class Remote RF mounted @ Galley Speakercraft Accufit CRS7 One mounted @ Galley x 4 JL Audio M770 CCX Marine Speaker -White mounted @ Galley Bose SZ-3 Lifestyle Stereo Amplifier mounted @ Bow Bose RC-35S V Class Remote RF mounted @ Bow Fusion AM/FM/IPOD Stereo mounted @ Flybridge JL Audio M770 CCX marine Speaker – White mounted @ Flybridge x 4 Fusion MS-WR600C Wired Remote-Chrome mounted @ Flybridge Helm & Bar x 2 Fusion 500 Watts 4 Channels Marine mounted @ Flybridge Samsung 40" HD LED TV UN40D6400 mounted @ VIP Concord TV Mount mounted @ VIP Samsung BDC5500 Blu-ray Player mounted @ VIP DirecTV HD DVR Receiver – Lease mounted @ VIP Sonance FS-23 IPOD Dock mounted @ VIP Samsung 50" HD LED TV UN40D6400 mounted @ Port & Stbd Guest x 2 Concord TV Mount mounted @ Port & Stbd Guest x 2 DirecTV HD DSS Receiver – Lease mounted @ Port & Stbd Guest x 2 Samsung BDC5500 Blu-ray Player mounted @ Port & Stbd Guest x 2 Sonance FS-23 IPOD Dock mounted @ Port & Stbd Guest x 2 Samsung 40" HD LED TV UN40D6400 mounted @ Master Concord TV Mount mounted @ Master Bose Lifestyle V35 White Flush mounted @ Master Samsung BDC5500 Blu-ray Player mounted @ Master DirecTV HD DVR Receiver – Lease mounted @ Master Middle Atlantic Sliding Rack Assembly mounted @ Master Samsung 40" HD LED TV UN40D6400 mounted @ Captain Concord TV Mount mounted @ Captain DirecTV HD DSS Receiver – Lease mounted @ Captain Sonance FS-23 IPOD Dock mounted @ Captain Audiovox Drop Down 10' LCD DVD TV

mounted @ Crew 1 and 2 x 4Xantech AV-61 mounted @ Crew 1 and 2 x 2DirecTV Basic DSS Receiver – Lease mounted @ Crew 1 and 2 x 2Samsung 32" HD LED TB UN32D6000 mounted @ Crew LoungeConcord TB Mount mounted @ Crew loungeSamsung BDC5500 BlueraY Player mounted @ Crew LoungeSonance FS-23 IPOD Dock mounted @ Crew Lounge

## Electronics

KEP Marine KEP-L 19 Sunlight Readable mounted @ Pilot House x 6 Furuno NAV 3D BB MFD Processor mounted @ Pilot House Furuno NAV 3D 12KW 72N.M. 6' Array mounted @ Hard Top Furuno BBWGPS WASS GPS Antenna mounted @ Hard Top Furuno NAV3D BB MFD Processor mounted @ Pilot House Furuno NAV 3D 4KW, 48N.M. 3.5 Array mounted @ Radar Arch Furuno BBWGPS WASS GPS Antenna mounted @ Hard Top Furuno FA 150 AIS System Digital 500 Series 4' Marine AIS Concord Computer Tower Empty mounted @ Pilot House Nauticomp Mouse, Panel MNT mounted @ Pilot House Concord RF Keyboard/Mouse Logitech mounted @ Pilot House Furuno GP 33 WAAS Color GPS mounted @ Pilot House Furuno RD323 NMEA Repeater Color mounted @ Lower Helm x 2 Furuno 235-MSLF 235KHZ Smart Sensor mounted fwd @ Hull Furuno FI50 Wind Display and Sensor mounted @ Lower Helm Furuno PB 200 Weather Sensor mounted @ Hard Top Furuno NMEA2000 Terminator Micro MA x 2 Concord 24 to 12 VDC 5 AMP PS Furuno Navpilot 700 mounted @ Lower Helm Furuno PG 500R Heading Sensor Ffuruno Navpilot HRP 17-24 Pumpset mounted @ Engine Room Furuno FM 4000 VHF 25 Watt mounted @ Lower Helm Furuno FM 4000 Mic mounted @ Lower Helm Newmar Hailer Horn 60/40 mounted @ Hard Top Digital 500 Series 16' VHF Antenna mounted @ Hard Top KEP Marine KEPL-15 Sunlight mounted @ Upper Helm Furuno NAV 3D 12" MFD Display Furuno NAV 3D BB Control Keyboard mounted @ Upper Helm x 2 for MFDDBB 1-2 Nauticomp Mouse, Panel Mnt. Mounted @ Upper Helm – Control NAV Computer Furuno RD33 NMEA Repeater Color mounted @ Upper Helm – Depth Speed & Temp Furuno RD33 NMEA Repeater Color mounted @ Upper Helm – Depth only Furuno NAVPILOT 700 2nd Station mounted @ Upper Helm Furuno FM 4000 VHF 25 Watt mounted @ Upper Helm Furuno FM 4000 Remote Mic 2nd Station mounted @ Upper Helm Digital 500 Series 16' VHF Antenna mounted @ Flybridge Newmar hailer Horn 60/40 mounted @ Flybridge Newmar 32-12-50 DC-DC Converter Sea See DND – 60 Wide White Ball Cam Re mounted @ Aft Deck x 2 Sea See DND – 60 Wide White Ball Cam mounted @ Engine Room x 2 Sea See Quad Switcher and Keyboard mounted @ Lower Helm Sea See Keypad for Quad Switcher mounted @ Upper Helm Sea See Video AMP 1 x 4 Concord 110AC 12VDC 10 AMP Extron 8 Input 8 Output Switcher Concord DC-AC Pure Sine Wave Inverter ACR RCL 100D 24VDC Spotlight x 2

## Exterior Equipment

Custom Aft deck seating (1) 40" TV forward of Wet Bar at Aft Deck Aft Deck Custom Wet Bar granite top Aft Deck Wet Bar upholstered with Aqua Leather and Stainless Steel Band & Cuff (4) Custom S/S Stools for Aft Deck Bar Scandvik 10242 S/S Sink at Aft Deck (1) Scandvik 70130 Polished Chrome Sink Faucet in Aft Deck Bar Aft Deck Teak table with (2) Aritex Hi/Low Electric

angled table bases with slides Franke GNX-110-16 S/S Sink in Flybridge Bar S/S 10" Sink in Flybridge Scandvik 70103 Polished Chrome Sink Faucet in Flybridge Scandvik 10242 S/S Sink for Fwd Bar in Flybridge Extra 2 3/8 " oval stainless hull banding w/solid wood insert and 4" offset Wet bar on Flybridge w/ 6 Stainless Steel bar stools Flybridge Bar with (2) Bar Stools (at Hot Tub) (1) Aft Flybridge Table with Teak Top and Aritex Hi/Low Electric angled table base for curved seating next to hot tub Gloss Teak Bar top for Flybridge Bar and Bar top of Hot Tub (2) Aritex Hi/Low Electric angled table bases with slides for Flybridge Table (1) Aritex Hi/Low electric angled table bases for aft Flybridge table Removable Teak Table top in between seats at Aft Deck and Flybridge Upgrade Flybridge, Aft Deck and Bathing Platform Teak Deck to 3" wide Teak Plank in place of standard Locker for boarding ladder Automatic/Manual Aft Deck door with stainless steel frame and tinted glass (4) Wicker Deck Chairs

(5) 2" U-Shaped Hand Rails on Swim Platform Kahlenberg D-OA Air Horn Non-Skid and enclosed FRP box w/seat for storage on bow Re-enforce for davit & installing stand pipe Quartz flood lights (2) Custom Flybridge cabinet Stbd side for grill and appliances Bow deck lights, waterproof x 8 S/S Hargrave 16" Logo x 2 S.S. Engine Room door (1) navigation seat on Flybridge deck Upgrade to Freeman watertight access hatch 30" x 30" to swimming platform (13) Custom Open able Fiberglass portholes 24" x 12" S/S railing as foot rest for post and stbd. Navigation seat on boat deck (50) Cantalupi Diana 105 S/S exterior lights Upgrade aft deck and flybridge deck hand rail to Staple 2" S/S exterior hand rails Hard Top Custom hot tub box with custom FRP storage box with hinged lift-up panel, sun pad on top and FRP seating on Boat Deck Hot Tub with access steps, safety rail, integrated seat, access hatch to space below for storage, covers and cushions for use on this area Custom stairway for accessing flybridge from aft deck with storage Custom pillar at sidewalk ways Custom flybridge helm console Maxwell VC3500 capstan x 2 at Aft Deck, one on each side (2) FRP recessed Lift Ring Holders for Life Rings

## Mechanical Equipment

15 ton Chilled Water Cruisair A/C System with controls and Smart Start (5 x 3 ton units) Plumbing unions for supply and return on A/C raw water pump quick connect or easy junction box access for A/C raw water pump (2) 44 Kw CAT w/sound shield water drop exhaust (4) 100 amp Dolphin / Sentry AC/DC light transformer Watertight bulkheads in engine room Naiad Stabilizers Model 525-2.50 Roll Stabilizer System with (2) 22 sq.ft. fins & DATUM controllers with Naiad Box Hull faring part (2) Orderfer fuel transfer pump 990RHN76 Reverso GP706-24 Oil Change pump for engines and generators Security main switch on a/c power Double Racor filters for engines Wiring and plumbing for Watermaker (1) Two Glendenning 100 amp cable master in Port/Starboard side of the transom w/ 125' cord Glendenning Controls with fix controls head for upper and lower helm station plus remote at aft deck and boat deck (3) Watertight doors Jabsco emergency crash clutch pump 18330-0000 with 4 pick up Mufflers for Main Engine by-pass (2) 80 Gallon Water Heaters In-Line Recirculation "Hot Water" pump Sentry Battery Chargers-1x100 Amp 24V-1x30Amp 24V-1x30 Amp 12V Delta - T Engine Room Filters & Fans Custom FRP air intake vent box with clean open finish; No stainless steel grill will be mounted against the hull



side Tide Seal Dripless Rudders Tide Seal Dripless shaft logs Fill-Rite 901-1.5" Flow Meter for fuel transfer pump Sea-Fire automatic fire extinguisher system Sea-Fire Detection and Monitoring System with (10) Sensors Upgrade to anchor pocket system with dual Maxwell VWC4500 hydraulic windlass, (2) 250 lbs anchor and (2) 300 FT of high tensile chain Safety rails around twin engines Total fuel capacity 8,000 US Gallons To allow Fuel Fill from both sides of the vessel with overfill reservoir in recessed locker CAT Gauges top-mount of engine Stairway to access engine room from aft port water tight door (6) Custom Stainless Steel 30" x 15" Vertical Portlights (12) custom size 6" x 48" Freeing Ports (1) additional Headhunter M5-115AC Mach 5 Pump plus 1" line to hot tub under Crew Lounge A single Masthead Light on hard Top, shall display that light forward of amidships base

## Factory Installed Equipment

2" Deck fills for fuel and water 700 Gallon Stainless Steel Water Tank V-Shaped Keel w/ Longitudinal stringers Fiberglass hand laid hull & stringers vacuum bagged w/foam core reinforcement Stringers bonded to hull encapsulated in several layers of glass cloth & resin Deck & superstructure w/ foam cored reinforcement under fiberglass FRP Bulkheads Interior structural components bonded to hull including bulkheads and frames FRP Main Deck and floors Teak on main exterior decks FRP exterior Portholes Fiberglass swim platform All handrails, stanchions and fittings made of stainless steel 316 alloy Stainless steel cleats, chocks (8) S/S corner hawse pipe with rollers & cleats at Port & Stbd side of Aft Deck Stainless Steel frame hatch on fore deck w/ grey lexan cover Built in hand held shower on swim platform Upgrade to long 4" stainless steel shafts equivalent to Aquamet 22 Zincs on shafts, rudders and transom as needed 5 Blade Faster bronze propellers Main bronze struts for 4" shaft One additional pair of bronze struts for supporting long 4" shaft FRP stern tube for 4" shafts Emergency tiller Stainless steel rudders Fiberglass engine beds, bonded to hull w/ load distributed on steel channels Double layer of sound and heat insulation in Engine room bulkhead fwd, aft & ceiling Additional insulation space as required for Main and Lower Deck Ceilings Add third layer of insulation to master bulkhead Easy access to all helm dashboard controls and gauges Remote windlass operation from Pilothouse and Flybridge Raycor 1000 FG fuel filter/water separator for each engine x 2 Hydraulic Bow Thruster Model 16 60 HP upgraded Hydraulic steering by Hynautic, adaptable to auto-pilot Engine Alarm System for low pressure & high temperature supplied by CAT 24v lights and 110v power receptacles in engine room (4 each) Custom underwater engine exhaust w/idle by-pass Headhunter 200 GPD waste treatment system Fresh water filling faucet in Engine room VIMAR sockets and switches in all rooms 220v, 110v and 60Hz Electrical System Color coded wiring throughout Rule Sump Pumps (7) with float switches Y-Valve for dockside pump out from holding tank (8) 200 amp/hr batteries for engine & ship power (2) Separate 120 amp/hr battery for generator All batteries in FRP battery boxes Main electrical panel w/ separate AC Power control and circuit breaker panel 110 volt duplex receptacles located throughout vessel, including engine room Indirect rope lighting under valances in salon staterooms and galley Polished S/S Interior Door Hardware and Door Stops Satin Nickel Interior Drawer & Cabinet Pull Hardware Recessed Tray ceiling in salon Lights in closet on micro switches Cantaloupe 24v ceiling lights - Brushed Nickel Roman Shades in each stateroom, main salon & galley Bed on Hydraulic

cylinder in Master and VIP Large Storage areas forward deck Boat panel indicator Granite counter top in galley Marble or Granite counter top in all bathrooms Full Walk-in Shower in master Black Textilene front window covers Flybridge vinyl seat covers Helm and Passenger seat on Flybridge Lexan hatch from aft deck to Flybridge deck Cat instruments at helm (Tach/Oil Pressure/Engine Temp/Trans Pressure/Hrs) City water inlets (2) TV / telephone inlet (2) Fresh water wash down (3) three locations - Bow / aft deck / flybridge 2 Coats Sea Hawk Bottom Paint Sea Chest White perforated insulation panels in Engine Room (3) Windshield wipers with blades and digital control panel

## Remarks

---

**PRICE REDUCED FROM \$13,900,000 FOR IMMEDIATE SALE DURING THE MIAMI YACHT & BROKERAGE SHOW FEBRUARY 12 - 16, 2015**

## Исключения

---

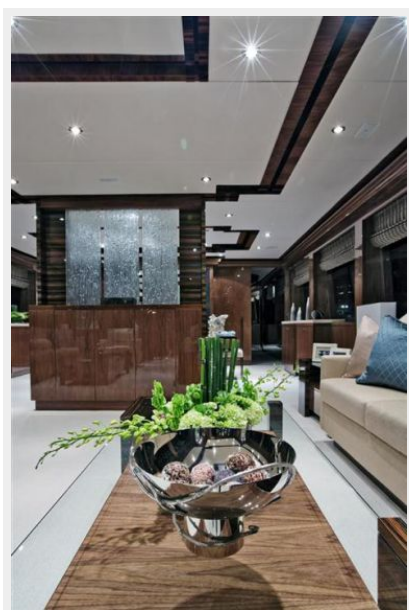
При продаже яхты исключаются личные вещи владельца.

## Отказ от ответственности

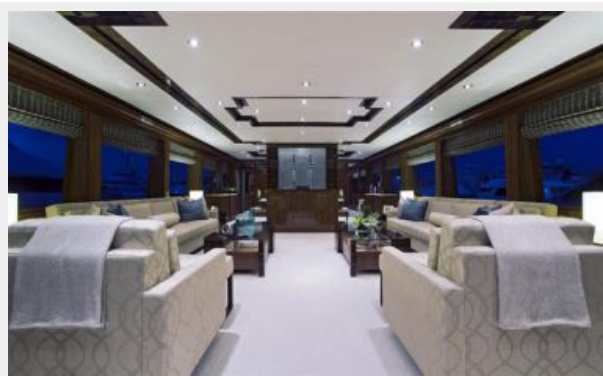
---

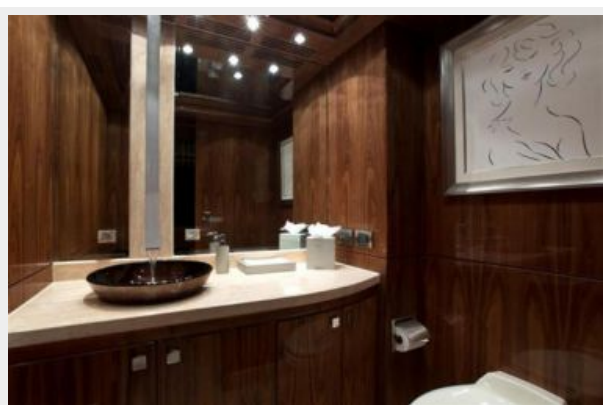
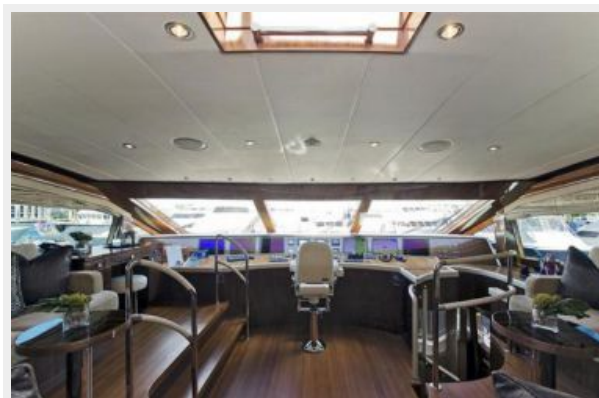
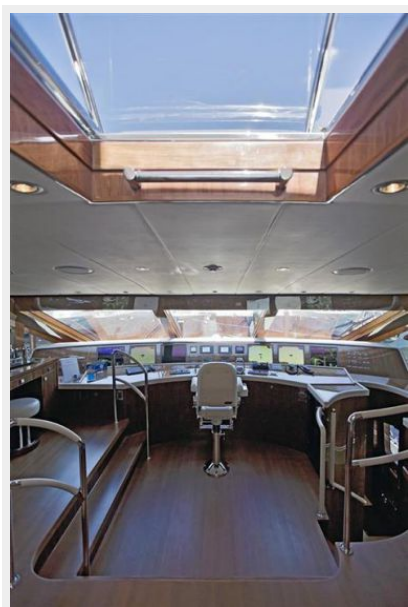
Компания предоставляет описание судна или яхты добросовестно, но не может гарантировать точность этой информации, а также не ручается за техническое состояние. Покупатель должен проинструктировать своих агентов или оценщиков исследовать представленную информацию более подробно, по собственному желанию. Продажа судна или яхты, изменение цены или снятие с продажи будет происходить без предварительного уведомления.

# ФОТОГРАФИИ

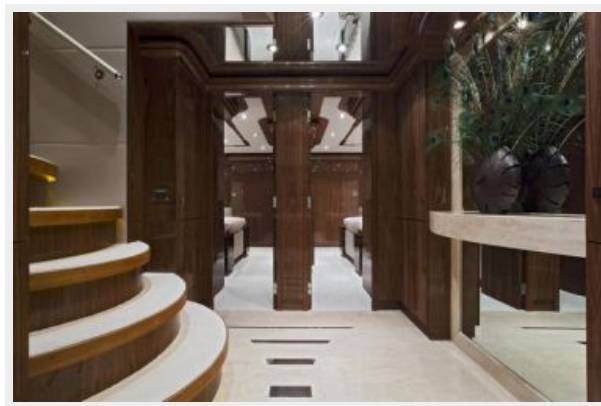
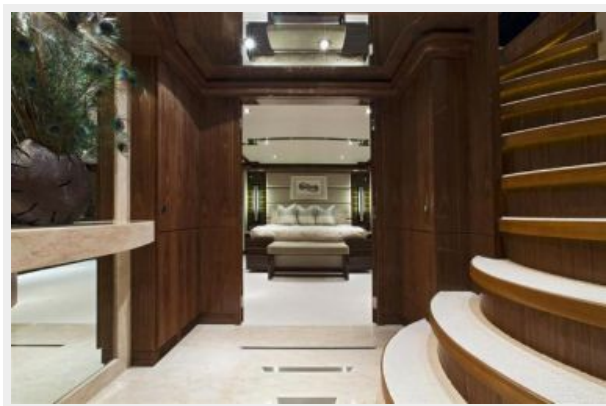
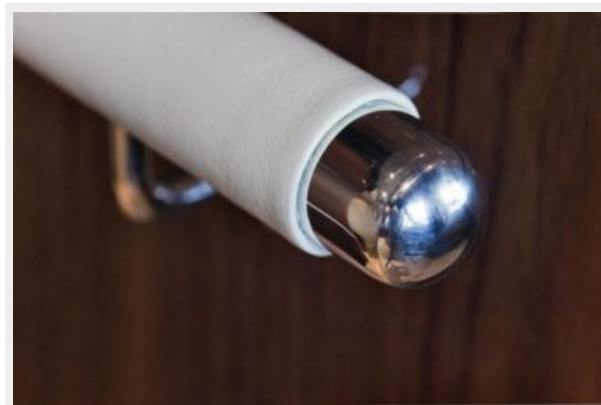
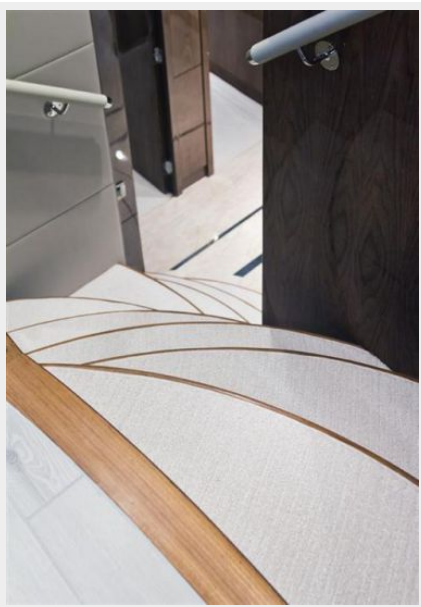


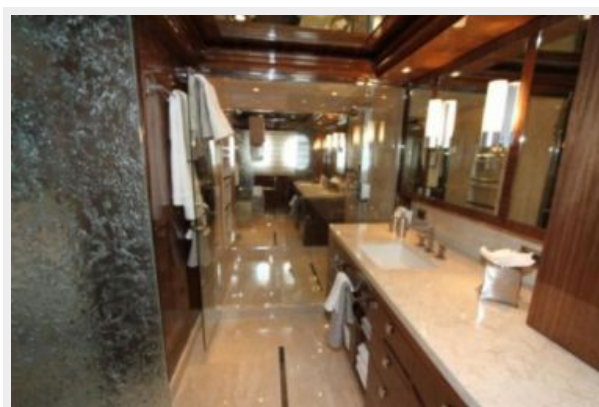








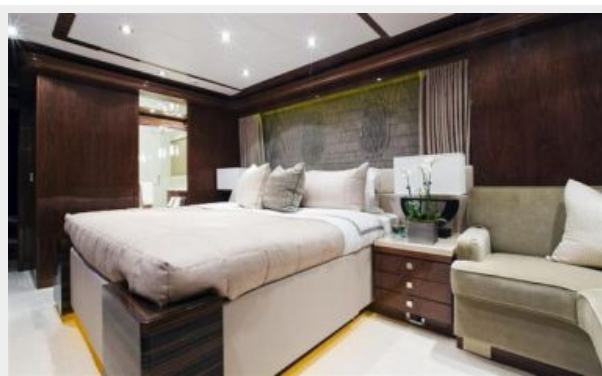








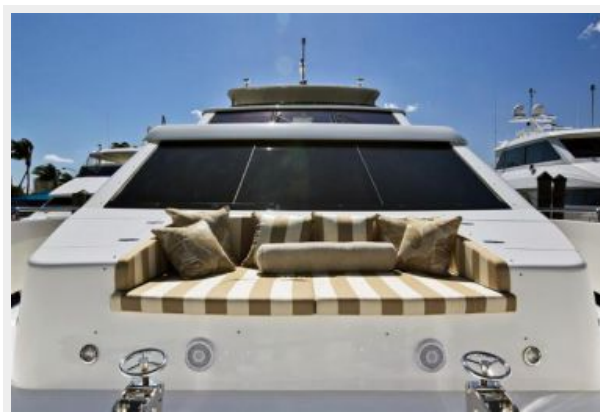




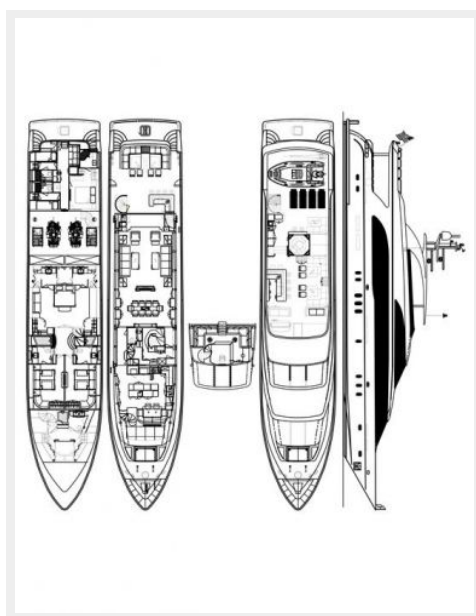












# КОНТАКТЫ

---

Андрей Шестаков (Andrey Shestakov) – ведущий яхтенный брокер отдела продаж яхт и судов компании Shestakov Yacht Sales Inc. Официальный представитель Shestakov Yacht Sales Inc. для русскоговорящих клиентов в центральном офисе компании в Майами/Форт Лодердейл/Флорида/США.

## Контактная информация

---

Email: **andrey@shestakovyachtsales.com**

Web: [shestakovyachtsales.com](http://shestakovyachtsales.com)

## Телефоны

---

Краснодарский край: **+7(918)465-66-44**

США, Майами, Флорида: **+1(954)274-4435**

## Время работы

---

Понедельник – Суббота: **9:00 - 21:00**  
EDT

Воскресенье: **Закрито**

## Адрес

---



Harbour Towne Marina, 850 NE 3rd St,  
STE 213, Dania, FL 33004