

## M'LADY — HUNTER MARINE



**Builder:** HUNTER MARINE

**Year Built:** 1999

**Model:** Cruising Sailboat

**Price:** PRICE ON APPLICATION

**Location:** United States

**LOA:** 42' 0" (12.80m)

**Beam:** 13' 10" (4.22m)

**Min Draft:** 5' 4" (1.63m)

**Cruise Speed:** 7 Kts. (8 MPH)

**Max Speed:** 8 Kts. (9 MPH)

Our experienced yacht broker, Andrey Shestakov, will help you choose and buy a yacht that best suits your needs M'Lady — HUNTER MARINE from our catalogue. Presently, at Shestakov Yacht Sales Inc., we have a wide variety of yachts available on our sale's list. We also work in close contact with all the big yacht manufacturers from all over the world.

If you would like to buy a yacht M'Lady — HUNTER MARINE or would like help answering any questions concerning purchasing, selling or chartering a yacht, please call +1(954)274-4435

# TABLE OF CONTENTS

---

TABLE OF CONTENTS	2
SPECIFICATIONS	5
Overview	5
Basic Information	5
Dimensions	5
Speed, Capacities and Weight	5
Accommodations	5
Hull and Deck Information	6
Engine Information	6
DETAILED INFORMATION	7
42' Hunter Overview	7
42' Hunter Vessel Walkthrough	7
42' Hunter Accommodations	7
42' Hunter Salon	7
42' Hunter Galley	7
42' Hunter Dining	8
42' Hunter Master Stateroom	8
42' Hunter Guest Stateroom	8
42' Hunter Aft deck	8
42' Hunter Cockpit	8
42' Hunter Audio And Visual Equipment	8
42' Hunter Electronics and Navigational Equipment	8
42' Hunter Electrical System	9
42' Hunter Engine /Mechanical Equipment	9
42' Hunter Sails and Rigging	10
42' Hunter Deck Equipment	10
42' Hunter Tender	10
42' Hunter Safety And Fire Protection	11

42' Hunter Exclusions	11
Exclusions	11
Disclaimer	11
PHOTOS	12
42' Hunter underway	12
42' Hunter port forward profile	12
42' Hunter port aft profile	12
42' Hunter starboard aft profile	12
42' Hunter anchor	13
42' Hunter anchor windlass	13
42' Hunter foredeck	13
42' Hunter foredeck aft	13
42' Hunter aftdeck port	13
42' Hunter aftdeck starboard	13
42' Hunter BBQ grill	14
42' Hunter swimplatform	14
42' Hunter port lazarette	14
42' Hunter starboard lazarette	14
42' Hunter tender	14
42' Hunter cockpit forward	14
42' Hunter cockpit aft	15
42' Hunter cockpit engine panel	15
42' Hunter cockpit helm	15
42' Hunter salon forward	15
42' Hunter salon aft	15
42' Hunter salon port seating/storage	15
42' Hunter galley photo1	16
42' Hunter galley photo2	16
42' Hunter nav station	16

---

42' Hunter master stateroom entrance	16
42' Hunter master stateroom	16
42' Hunter master stateroom forward	16
42' Hunter guest stateroom forward	17
42' Hunter guest stateroom aft	17
42' Hunter guest stateroom head	17
42' Hunter auxiliary	17
42' Hunter electrical panel	17
42' Hunter generator photo1	17
42' Hunter generator photo2	18
42' Hunter hauled out aft profile	18
CONTACTS	19
Contact details	19
Telephones	19
Office hours	19
Address	19

---

# SPECIFICATIONS

---

## Overview

---

M'Lady is a Hunter 420 center cockpit with a 2 stateroom 2 head layout that has had numerous upgrades and is in good condition. She is owned by a knowledgeable yachting couple who are done sailing and ready to find a new owner who will care for her as they have. She was recently re-launched for the summer season, detailed and is ready for her next cruise. Price reduced!

## Basic Information

---

**Category:** Cruising Sailboat

**Model Year:** 1999

**Year Built:** 1999

**Country:** United States

**Vessel Top:** Bimini Top

**Cockpit:** Yes

## Dimensions

---

**LOA:** 42' 0" (12.80m)

**LWL:** 37' 10" (11.53m)

**Beam:** 13' 10" (4.22m)

**Min Draft:** 5' 4" (1.63m)

## Speed, Capacities and Weight

---

**Cruise Speed:** 7 Kts. (8 MPH)

**Max Speed:** 8 Kts. (9 MPH)

**Displacement:** 21000 Pounds

**Gross Tonnage:** 23 Pounds

**Water Capacity:** 147 Gallons

**Holding Tank:** 45 Gallons

**Fuel Capacity:** 61 Gallons

## Accommodations

---

**Total Cabins:** 2

**Total Berths:** 3

**Sleeps:** 6

**Total Heads:** 2

---

## Hull and Deck Information

---

**Hull Material:** Fiberglass

**Deck Material:** Fiberglass Sandwich

**Hull Configuration:** Monohull

**Hull Color:** White

**Hull Finish:** Aluminum

---

## Engine Information

---

**Engines:** 1

**Manufacturer:** Yanmar

**Engine Type:** Inboard

**Fuel Type:** Diesel

---

## DETAILED INFORMATION

---

### 42' Hunter Overview

---

M'Lady is a Hunter 420 center cockpit with a 2 stateroom 2 head layout that has had numerous upgrades and is in good condition. She is owned by a knowledgeable yachting couple who are done sailing and ready to find a new owner who will care for her as they have. She was recently re-launched for the summer season, detailed and is ready for her next cruise. Price reduced!

### 42' Hunter Vessel Walkthrough

---

Stepping down from the cockpit into the salon, you will find the galley port aft, a nav station, auxilliary and generator access and the master stateroom entrance starboard aft, L-shaped seating and hi/lo teak table starboard forward and a benchseat port foward. The guest stateroom is forward.

### 42' Hunter Accommodations

---

M'Lady offers a full beam master stateroom aft with a centerline queen berth and ensuite head and a guest stateroom forward with a double berth and ensuite head. The salon table also lowers to convert to a double berth.

### 42' Hunter Salon

---

The salon was re-upholstered in 2010 and offers a built-in benchseat port forward, L-shaped built-in seating to starboard with a hi/lo teak table, nav station starboard aft and the galley port aft. There are shelves, storage, teak & holly sole, side windows with shades and 2 overhead deck hatches.

### 42' Hunter Galley

---

The galley is located to port aft in the salon.

- Goldstar microwave oven
- Force10 3-burner propane stove (2012)
- Dometic refrigerator

---

- Double stainless steel sinks

## **42' Hunter Dining**

---

Dining space is available at the salon table or the cockpit folding table.

## **42' Hunter Master Stateroom**

---

The full beam aft master stateroom was re-upholstered in 2010 and offers a centerline queen size berth, nightstands, reading lights, 4 portlights, overhead deck hatch with screen, hanging locker, shelves, storage drawers, shades, drapes, teak & holly sole and an ensuite head.

## **42' Hunter Guest Stateroom**

---

The guest stateroom is forward and offers a double berth to starboard, storage lockers, drawers and shelves and an ensuite head.

## **42' Hunter Aft deck**

---

The aft deck offers stern rail seats on both sides, non-skid deck, stainless steel rails and a Force10 BBQ grill.

The swimplatform offers a fresh water shower and a swim ladder.

## **42' Hunter Cockpit**

---

The center cockpit offers an aluminum/canvas top and full enclosure with an Enewhere center forward glass panel with wiper and Ranier panels forward and Strataglass panels on each side (with screens) and aft that was new in 2012. There is wrap-around seating and a pedestal helm.

## **42' Hunter Audio And Visual Equipment**

---

- Kenwood KDC-3022 AM/FM/CD/Sirius satellite ready radio in the salon

## **42' Hunter Electronics and Navigational Equipment**

---



- 
- Raytheon RL70 Pathfinder Plus Radar/chart plotter
  - Raytheon ST6000+ autopilot
  - Suunto magnetic compass
  - Chelsea ship's clock and barometer
  - Apelco 5200 VHF

## **42' Hunter Electrical System**

---

The electrical system was rewired in 2012. Other than the master stateroom shower light there are LED lights throughout.

- Northern Lights 6kW generator with 916 hours
- Hunter 12vdc/110vac electrical panel
- Eclectic Energy D400 wind generator connected to the house battery bank
- Heart Interface Freedom 2000 watt inverter/charger with remote monitor panel
- Solar panel connected to the start battery
- Battery bank parallel switch
- 4 X Interstate Group 27 house batteries
- 1 X Interstate Group 26 start battery
- 2 X 30 amp shore power outlets and cord

## **42' Hunter Engine /Mechanical Equipment**

---

- Yanmar 62hp auxillary
- PYI 3-bladed feathering propeller
- Racor R20S fuel filter

- 
- Marine Air Systems reverse cycle air conditioning/heating system with two units
  - Wema tank gauges
  - Whitlock steering system

## **42' Hunter Sails and Rigging**

---

- All new spars, rigging and sails in 2005
- Selden Furlex 300S roller furling jib
- Selden mast with in-mast roller furling UK Sailmakers main
- Selden Rod Kicker
- Lewmar winches with electric self-tailing winch for the main sheet and halyards
- Harken adjustable traveler

## **42' Hunter Deck Equipment**

---

- Lewmar anchor windlass with foot pedal controls at the windlass (2010)
- Bruce anchor
- 150' 3/8" anchor chain and 200' nylon anchor rode
- Raw water washdown
- Non-skid decks
- Lifelines
- Aluminum deck hardware
- Lewmar deck hatches
- Spreader lights

## **42' Hunter Tender**

---

- Achilles HB-315DX 10'4" RIB (2008)

- Yamaha 8hp 2-cycle outboard (2009)
- Ocean Marine Systems transom davits

---

## 42' Hunter Safety And Fire Protection

---

- Lifesling overboard recovery system
- Radar reflector
- Lifelines

---

## 42' Hunter Exclusions

---

Sellers' personal belongings

---

## Exclusions

---

Owner's personal belongings.

---

## Disclaimer

---

The Company offers the details of this vessel or yacht in good faith but cannot guarantee or warrant the accuracy of this information nor warrant the condition of the vessel. A buyer should instruct his representatives, agents, or his surveyors, to investigate such details as the buyer desires validated. This vessel or yacht is offered subject to prior sale, price change, or withdrawal without notice.

# PHOTOS

**42' Hunter underway**



**42' Hunter port forward profile**



**42' Hunter port aft profile**



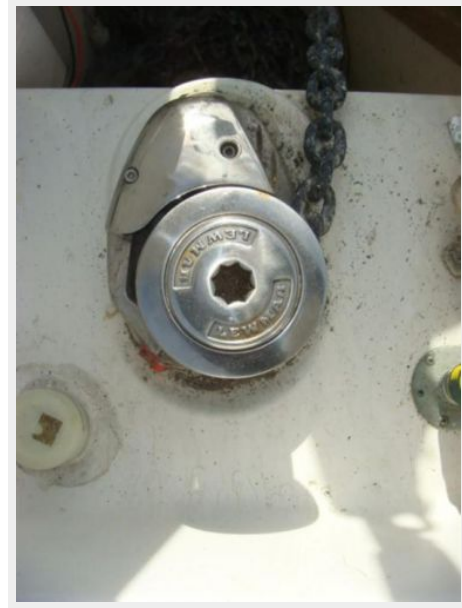
**42' Hunter starboard aft profile**



**42' Hunter anchor**



**42' Hunter anchor windlass**



**42' Hunter foredeck**



**42' Hunter foredeck aft**



**42' Hunter aftdeck port**



**42' Hunter aftdeck starboard**





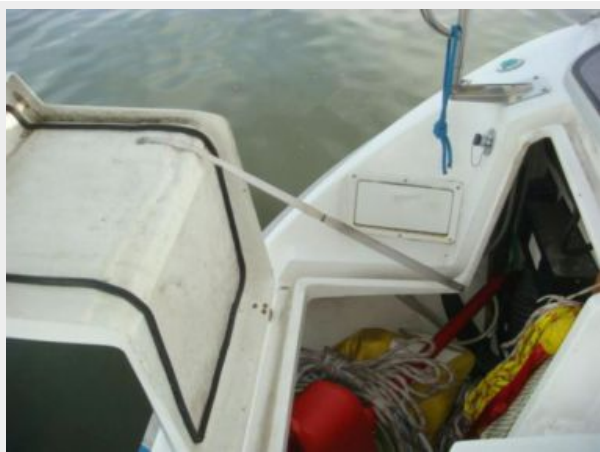
**42' Hunter BBQ grill**



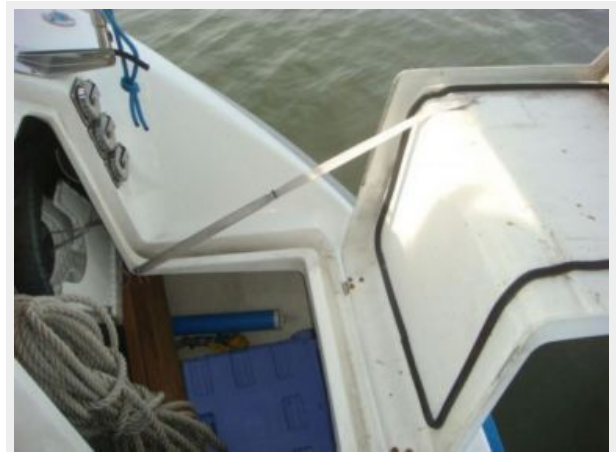
**42' Hunter swimplatform**



**42' Hunter port lazarette**



**42' Hunter starboard lazarette**



**42' Hunter tender**



**42' Hunter cockpit forward**



**42' Hunter cockpit aft**



**42' Hunter cockpit engine panel**



**42' Hunter cockpit helm**



**42' Hunter salon forward**



**42' Hunter salon aft**



**42' Hunter salon port seating/storage**





**42' Hunter galley photo1**



**42' Hunter galley photo2**



**42' Hunter nav station**



**42' Hunter master stateroom entrance**



**42' Hunter master stateroom**



**42' Hunter master stateroom forward**





42' Hunter guest stateroom forward



42' Hunter guest stateroom aft



42' Hunter guest stateroom head



42' Hunter auxiliary



42' Hunter electrical panel



42' Hunter generator photo1



42' Hunter generator photo2



42' Hunter hauled out aft profile



---

# CONTACTS

---

Andrey Shestakov, leading yacht broker of the sales department of Shestakov Yacht Sales Inc. Shestakov Yacht Sales Inc., the official representative of the Miami/Fort Lauderdale FL headquarters.

---

## Contact details

---

Email: [andrey@shestakovyachtsales.com](mailto:andrey@shestakovyachtsales.com)

Web: [shestakovyachtsales.com/en/](http://shestakovyachtsales.com/en/)

---

## Telephones

---

USA: +1(954)274-4435

---

## Office hours

---

Monday – Saturday: **9:00 - 21:00** EDT

Sunday: **closed**

---

## Address

---



Harbour Towne Marina, 850 NE 3rd St,  
STE 213, Dania, FL 33004