

M'LADY — HUNTER MARINE



Судостроитель: HUNTER MARINE

Год постройки: 1999

Модель: Крейсерская яхта

Цена: **ЦЕНА ЯХТЫ ПО ЗАПРОСУ**

Местонахождение: United States

Длина общая: 42' 0" (12.80m)

Ширина: 13' 10" (4.22m)

Мин. осадка: 5' 4" (1.63m)

Крейс. скорость: 7 Kts. (8 MPH)

Макс. скорость: 8 Kts. (9 MPH)

Купить M'Lady — HUNTER MARINE а также выбрать подходящую вам яхту из нашего каталога яхт вам поможет опытный яхтенный брокер Андрей Шестаков. На сегодняшний день компания Shestakov Yacht Sales Inc. имеет большое количество яхт в собственном списке продаж, а также тесно сотрудничает со всеми крупными яхтенными производителями по всему миру.

Для того чтобы купить яхту M'Lady — HUNTER MARINE а также проконсультироваться по любому вопросу связанному с покупкой, продажей, чартером яхт позвоните по телефону **+7(918)465-66-44**.

ОГЛАВЛЕНИЕ

ОГЛАВЛЕНИЕ	2
ХАРАКТЕРИСТИКИ	5
Обзор	5
Основная информация	5
Размеры	5
Скорость, вместимость и масса	5
Размещение	5
Корпус и палуба	6
Информация о двигателе	6
ПОДРОБНОЕ ОПИСАНИЕ	7
42' Hunter Overview	7
42' Hunter Vessel Walkthrough	7
42' Hunter Accommodations	7
42' Hunter Salon	7
42' Hunter Galley	7
42' Hunter Dining	8
42' Hunter Master Stateroom	8
42' Hunter Guest Stateroom	8
42' Hunter Aft deck	8
42' Hunter Cockpit	8
42' Hunter Audio And Visual Equipment	8
42' Hunter Electronics and Navigational Equipment	8
42' Hunter Electrical System	9
42' Hunter Engine /Mechanical Equipment	9
42' Hunter Sails and Rigging	10
42' Hunter Deck Equipment	10
42' Hunter Tender	10
42' Hunter Safety And Fire Protection	11

42' Hunter Exclusions	11
Исключения	11
Отказ от ответственности	11
ФОТОГРАФИИ	12
42' Hunter underway	12
42' Hunter port forward profile	12
42' Hunter port aft profile	12
42' Hunter starboard aft profile	12
42' Hunter anchor	13
42' Hunter anchor windlass	13
42' Hunter foredeck	13
42' Hunter foredeck aft	13
42' Hunter aftdeck port	13
42' Hunter aftdeck starboard	13
42' Hunter BBQ grill	14
42' Hunter swimplatform	14
42' Hunter port lazarette	14
42' Hunter starboard lazarette	14
42' Hunter tender	14
42' Hunter cockpit forward	14
42' Hunter cockpit aft	15
42' Hunter cockpit engine panel	15
42' Hunter cockpit helm	15
42' Hunter salon forward	15
42' Hunter salon aft	15
42' Hunter salon port seating/storage	15
42' Hunter galley photo1	16
42' Hunter galley photo2	16
42' Hunter nav station	16

42' Hunter master stateroom entrance	16
42' Hunter master stateroom	16
42' Hunter master stateroom forward	16
42' Hunter guest stateroom forward	17
42' Hunter guest stateroom aft	17
42' Hunter guest stateroom head	17
42' Hunter auxiliary	17
42' Hunter electrical panel	17
42' Hunter generator photo1	17
42' Hunter generator photo2	18
42' Hunter hauled out aft profile	18
КОНТАКТЫ	19
Контактная информация	19
Телефоны	19
Время работы	19
Адрес	19

ХАРАКТЕРИСТИКИ

Обзор

M'Lady is a Hunter 420 center cockpit with a 2 stateroom 2 head layout that has had numerous upgrades and is in good condition. She is owned by a knowledgeable yachting couple who are done sailing and ready to find a new owner who will care for her as they have. She was recently re-launched for the summer season, detailed and is ready for her next cruise. Price reduced!

Основная информация

Тип судна: Крейсерская яхта

Модельный год: 1999

Год постройки: 1999

Страна: United States

Верх: Bimini Top

Кубрик: Да

Размеры

Длина общая: 42' 0" (12.80m)

Длина по ватерлинии: 37' 10" (11.53m)

Ширина: 13' 10" (4.22m)

Мин. осадка: 5' 4" (1.63m)

Скорость, вместимость и масса

Крейс. скорость: 7 Kts. (8 MPH)

Макс. скорость: 8 Kts. (9 MPH)

Водоизмещение: 21000 Pounds

Чистый вес: 23 Pounds

Вместимость воды: 147 Gallons

Вместимость сточного бака: 45 Gallons

Объем топливного бака: 61 Gallons

Размещение

Всего кают: 2

Всего коек: 3

Спальные места: 6

Всего ком. состава: 2

Корпус и палуба

Материал корпуса: Fiberglass

Материал палубы: Fiberglass Sandwich

Комплектация корпуса: Monohull

Цвет корпуса: White

Отделка корпуса: Aluminum

Информация о двигателе

Двигатели: 1

Производитель: Yanmar

Тип двигателя: Inboard

Тип топлива: Diesel

ПОДРОБНОЕ ОПИСАНИЕ

42' Hunter Overview

M'Lady is a Hunter 420 center cockpit with a 2 stateroom 2 head layout that has had numerous upgrades and is in good condition. She is owned by a knowledgeable yachting couple who are done sailing and ready to find a new owner who will care for her as they have. She was recently re-launched for the summer season, detailed and is ready for her next cruise. Price reduced!

42' Hunter Vessel Walkthrough

Stepping down from the cockpit into the salon, you will find the galley port aft, a nav station, auxilliary and generator access and the master stateroom entrance starboard aft, L-shaped seating and hi/lo teak table starboard forward and a benchseat port foward. The guest stateroom is forward.

42' Hunter Accommodations

M'Lady offers a full beam master stateroom aft with a centerline queen berth and ensuite head and a guest stateroom forward with a double berth and ensuite head. The salon table also lowers to convert to a double berth.

42' Hunter Salon

The salon was re-upholstered in 2010 and offers a built-in benchseat port forward, L-shaped built-in seating to starboard with a hi/lo teak table, nav station starboard aft and the galley port aft. There are shelves, storage, teak & holly sole, side windows with shades and 2 overhead deck hatches.

42' Hunter Galley

The galley is located to port aft in the salon.

- Goldstar microwave oven
- Force10 3-burner propane stove (2012)
- Dometic refrigerator

- Double stainless steel sinks

42' Hunter Dining

Dining space is available at the salon table or the cockpit folding table.

42' Hunter Master Stateroom

The full beam aft master stateroom was re-upholstered in 2010 and offers a centerline queen size berth, nightstands, reading lights, 4 portlights, overhead deck hatch with screen, hanging locker, shelves, storage drawers, shades, drapes, teak & holly sole and an ensuite head.

42' Hunter Guest Stateroom

The guest stateroom is forward and offers a double berth to starboard, storage lockers, drawers and shelves and an ensuite head.

42' Hunter Aft deck

The aft deck offers stern rail seats on both sides, non-skid deck, stainless steel rails and a Force10 BBQ grill.

The swimplatform offers a fresh water shower and a swim ladder.

42' Hunter Cockpit

The center cockpit offers an aluminum/canvas top and full enclosure with an Enewhere center forward glass panel with wiper and Ranier panels forward and Strataglass panels on each side (with screens) and aft that was new in 2012. There is wrap-around seating and a pedestal helm.

42' Hunter Audio And Visual Equipment

- Kenwood KDC-3022 AM/FM/CD/Sirius satellite ready radio in the salon

42' Hunter Electronics and Navigational Equipment

- Raytheon RL70 Pathfinder Plus Radar/chart plotter
- Raytheon ST6000+ autopilot
- Suunto magnetic compass
- Chelsea ship's clock and barometer
- Apelco 5200 VHF

42' Hunter Electrical System

The electrical system was rewired in 2012. Other than the master stateroom shower light there are LED lights throughout.

- Northern Lights 6kW generator with 916 hours
- Hunter 12vdc/110vac electrical panel
- Eclectic Energy D400 wind generator connected to the house battery bank
- Heart Interface Freedom 2000 watt inverter/charger with remote monitor panel
- Solar panel connected to the start battery
- Battery bank parallel switch
- 4 X Interstate Group 27 house batteries
- 1 X Interstate Group 26 start battery
- 2 X 30 amp shore power outlets and cord

42' Hunter Engine /Mechanical Equipment

- Yanmar 62hp auxillary
- PYI 3-bladed feathering propeller
- Racor R20S fuel filter

- Marine Air Systems reverse cycle air conditioning/heating system with two units
- Wema tank gauges
- Whitlock steering system

42' Hunter Sails and Rigging

- All new spars, rigging and sails in 2005
- Selden Furlex 300S roller furling jib
- Selden mast with in-mast roller furling UK Sailmakers main
- Selden Rod Kicker
- Lewmar winches with electric self-tailing winch for the main sheet and halyards
- Harken adjustable traveler

42' Hunter Deck Equipment

- Lewmar anchor windlass with foot pedal controls at the windlass (2010)
- Bruce anchor
- 150' 3/8" anchor chain and 200' nylon anchor rode
- Raw water washdown
- Non-skid decks
- Lifelines
- Aluminum deck hardware
- Lewmar deck hatches
- Spreader lights

42' Hunter Tender

- Achilles HB-315DX 10'4" RIB (2008)

- Yamaha 8hp 2-cycle outboard (2009)
- Ocean Marine Systems transom davits

42' Hunter Safety And Fire Protection

- Lifesling overboard recovery system
- Radar reflector
- Lifelines

42' Hunter Exclusions

Sellers' personal belongings

Исключения

При продаже яхты исключаются личные вещи владельца.

Отказ от ответственности

Компания предоставляет описание судна или яхты добросовестно, но не может гарантировать точность этой информации, а также не ручается за техническое состояние. Покупатель должен проинструктировать своих агентов или оценщиков исследовать представленную информацию более подробно, по собственному желанию. Продажа судна или яхты, изменение цены или снятие с продажи будет происходить без предварительного уведомления.

ФОТОГРАФИИ

42' Hunter underway



42' Hunter port forward profile



42' Hunter port aft profile



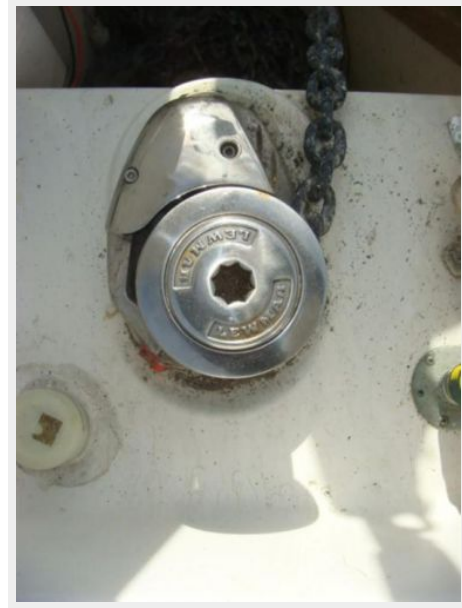
42' Hunter starboard aft profile



42' Hunter anchor



42' Hunter anchor windlass



42' Hunter foredeck



42' Hunter foredeck aft



42' Hunter aftdeck port



42' Hunter aftdeck starboard



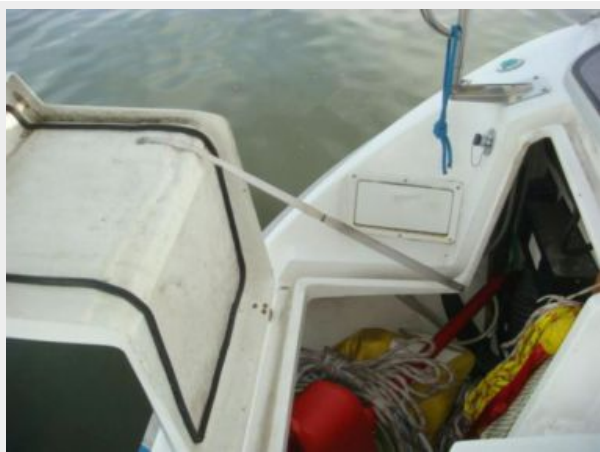
42' Hunter BBQ grill



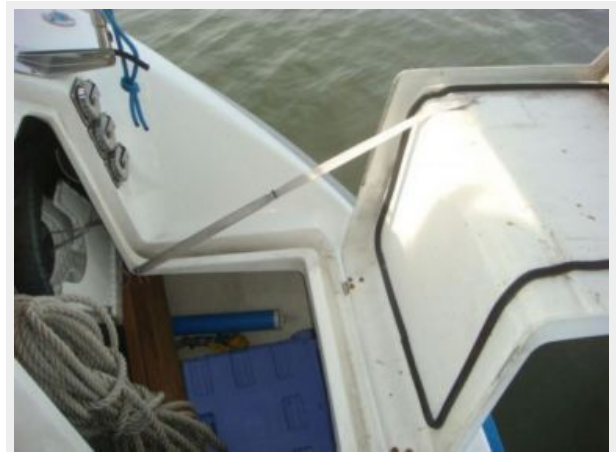
42' Hunter swimplatform



42' Hunter port lazarette



42' Hunter starboard lazarette



42' Hunter tender



42' Hunter cockpit forward



42' Hunter cockpit aft



42' Hunter cockpit engine panel



42' Hunter cockpit helm



42' Hunter salon forward



42' Hunter salon aft



42' Hunter salon port seating/storage



42' Hunter galley photo1



42' Hunter galley photo2



42' Hunter nav station



42' Hunter master stateroom entrance



42' Hunter master stateroom



42' Hunter master stateroom forward



42' Hunter guest stateroom forward



42' Hunter guest stateroom aft



42' Hunter guest stateroom head



42' Hunter auxiliary



42' Hunter electrical panel



42' Hunter generator photo1



42' Hunter generator photo2



42' Hunter hauled out aft profile



КОНТАКТЫ

Андрей Шестаков (Andrey Shestakov) – ведущий яхтенный брокер отдела продаж яхт и судов компании Shestakov Yacht Sales Inc. Официальный представитель Shestakov Yacht Sales Inc. для русскоговорящих клиентов в центральном офисе компании в Майами/Форт Лодердейл/Флорида/США.

Контактная информация

Email: andrey@shestakovyachtsales.com

Web: shestakovyachtsales.com

Телефоны

Краснодарский край: **+7(918)465-66-44**

США, Майами, Флорида: **+1(954)274-4435**

Время работы

Понедельник – Суббота: **9:00 - 21:00**
EDT

Воскресенье: **Закрето**

Адрес



Harbour Towne Marina, 850 NE 3rd St,
STE 213, Dania, FL 33004