

BIASHARA — TRADER



Builder: TRADER

Year Built: 2008

Model: Motor Yacht

Price: PRICE ON APPLICATION

Location: United Kingdom

LOA: 43' 6" (13.26m)

Beam: 14' 4" (4.37m)

Min Draft: 3' 11" (1.19m)

Cruise Speed: 10 Kts. (12 MPH)

Max Speed: 18 Kts. (21 MPH)

Our experienced yacht broker, Andrey Shestakov, will help you choose and buy a yacht that best suits your needs **BIASHARA — TRADER** from our catalogue. Presently, at Shestakov Yacht Sales Inc., we have a wide variety of yachts available on our sale's list. We also work in close contact with all the big yacht manufacturers from all over the world.

If you would like to buy a yacht **BIASHARA — TRADER** or would like help answering any questions concerning purchasing, selling or chartering a yacht, please call **+1(954)274-4435**

TABLE OF CONTENTS

TABLE OF CONTENTS	2
SPECIFICATIONS	4
Overview	4
Basic Information	4
Dimensions	4
Speed, Capacities and Weight	4
Accommodations	4
Hull and Deck Information	5
Engine Information	5
DETAILED INFORMATION	6
Construction	6
Machinery	6
Electrical Systems	7
Plumbing Systems	7
Tankage	8
Navigation Equipment	8
Domestic Equipment	8
Accommodation	10
Cockpit	10
Deck Equipment	11
Exclusions	12
Disclaimer	12
PHOTOS	13
CONTACTS	26
Contact details	26
Telephones	26
Office hours	26
Address	26

SPECIFICATIONS

Overview

2008 Trader 42. Twin stateroom luxury, heating, holding tank, generator, command-bridge set-up, and available ex tax for qualifying parties. A serious longer term cruiser of great Trader/Castro pedigree.

Basic Information

Category: Motor Yacht

Sub Category: Walk-around

Model Year: 2008

Year Built: 2008

Country: United Kingdom

Dimensions

LOA: 43' 6" (13.26m)

LWL: 36' 5" (11.10m)

Beam: 14' 4" (4.37m)

Min Draft: 3' 11" (1.19m)

Speed, Capacities and Weight

Cruise Speed: 10 Kts. (12 MPH)

Cruise Speed RPM: 200 Kts.

Max Speed: 18 Kts. (21 MPH)

Displacement: 30864.71668 Pounds

Water Capacity: 158.5032312 Gallons

Fuel Capacity: 449.0924884 Gallons

Accommodations

Total Cabins: 2

Total Berths: 4

Hull and Deck Information

Hull Material: GRP

Deck Material: Teak

Hull Configuration: Semi-Displacement

Hull Designer: Trader / Tony Castro

Engine Information

Engines: 2

Manufacturer: Cummins

Model: QSB 5.9

Engine Type: Inboard

Fuel Type: Diesel

DETAILED INFORMATION

Construction

RCD Status: The yacht conforms with the essential safety requirements of Directive 94/25EC (Recreational Craft Directive) and is categorised A – “Ocean”

Hull, Deck & Superstructure Construction:

- White GRP hull and superstructure.
- Teak laid decks and cockpit.
- Blue waterline stripes; red and blue topside stripes.

Machinery

Engine & Gearboxes:

- 2 x Cummins QSB 5.9 380hp diesel engines.
- Emergency fuel shut off valves.

Maintenance & Performance:

- Engine Hours: approx. 148 hours to port, 410 hours to starboard; port had ECM replaced which zeroed hours.
- Engine serviced and winterized October 2013.
- Cruising Speed @ 2000rpm: 10/12 knots.
- Maximum Speed: 18 knots.

Propulsion & Steering:

- Full instrumentation & single lever electronic controls.
- Hydraulic steering with adjustable tilt wheel.
- Lewmar 8hp bow thrusters.

- Lenco trim tabs.

Electrical Systems

Voltage Systems:

- 12 volt electrical system with circuit breaker protection & console socket.
- Cabin sockets.

Battery Banks:

- 1 x Engine start heavy duty gel batteries.
- 2 x Domestic heavy duty gel batteries.

Battery Chargers:

- Mastervolt battery charger / inverter.

Generator:

- Mastervolt 6kW generator in sound proof box.
- Generator serviced and winterized October 2013.

Shore Power:

- 220 volt shore supply.

Plumbing Systems

Fresh Water & Water Heating System:

- Pressurised hot & cold fresh water system (calorifier / immersion).

Bilge Pumps:

- 4 x Automatic electric bilge pumps.
- Manual bilge pump.

Tankage

Fuel:

- Total capacity of 1,700 litres (373 gallons).

Fresh water:

- Total capacity of 600 litres (131 gallons).

Grey/Blackwater holding tanks:

- Holding tank with macerator & Tankwatch 4 level monitor system.

Navigation Equipment

- Raymarine C120 radar / chartplotter.
- Raymarine ST8002 autopilot with Smart Controller.
- Raymarine ST60+ Tridata speed & depth sounder.
- Raymarine ST60+ wind speed & direction.
- Raymarine Ray240E DSC VHF radio with separate speaker.
- Sea-me radar reflector.
- Plastimo compass.
- Clock & barometer.

Domestic Equipment

Galley:

- Smeg 4 ring ceramic hob.

- Smeg combined microwave / oven.
- Smeg extractor fan.
- Super-wide Isotherm fridge / freezer.
- Stainless steel sink.
- Synthetic stone worktops.

Heads/Showers:

- 2 x Jabsco electric fresh water flushing WCs.
- 2 x Separate internal showers cubicles.
- 1 x Shower on bathing platform.

Heating & Ventilation:

- Eberspacher cabin heating with windscreen demister & cockpit vent.
- Engine compartment extractor fans.

Entertainment:

- Poly-Planar marine stereo radio / CD player with CD stacking system & cockpit / cabin speakers.
- Toshiba flat screen TV & DVD player with Glomex antenna.

Lighting:

- Engine compartment lights.
- Overhead cockpit light.
- Low level side deck & companionway lights.
- Low level rope lighting in 3 x main cabins.
- Navigation lights.

Accommodation

Summary of Accommodation:

- Spacious teak interior with teak flooring, cream carpet overlay & venetian blinds in saloon / heads compartments.
- Stowage throughout yacht with every bit of available space given to numerous hanging wardrobes, drawers, shelves & lockers.

Description of layout from forwards:

- Forward guest cabin with central walk-around double berth, padded headboard & deck hatch.
- Day / guest heads compartment to port with Jabsco electric fresh water flushing WC, wash hand basin, separate shower cubicle, synthetic stone counter tops & direct access to guest cabin.
- Access to engine compartment via lobby incorporating rail for wet clothing & waterproofs etc.
- Steps up to large deck saloon with raised “L” shaped dinette arrangement to port (occasional single berth).
- Sliding door to starboard side deck & twin skylights provide plenty of light & fresh air.
- TV cabinet & galley opposite.
- Steps down to master aft cabin with offset walk-around double berth, padded headboard & vanity unit with transom window / hatch.
- En-suite heads compartment with Jabsco electric fresh water flushing toilet, wash hand basin, synthetic stone counter tops & separate shower cubicle.

Cockpit

- Steps up from saloon to raised aft teak deck with adjustable helm & co-pilot seats starboard side forward.
- Additional passenger seat opposite with Isotherm drinks fridge under.
- Aft bench seat with stowaway folding table which, when combined with portable folding Commodore style chairs (not included), creates a al fresco dining area.
- Access to wide teak side decks with fold-down gates either side providing easy boarding

access.

- Transom gate & steps down to integral teak bathing platform with H&C shower & folding boarding ladder.

Deck Equipment

General:

- 2 x Windscreen wipers / washers.
- Horn.
- Ensign staff.

Anchoring & Mooring Equipment:

- Lewmar electric anchor windlass with chain stop & foredeck / console controls including chain counter.
- 27kg Stainless steel CQR anchor with chain (60m).
- Warps & fenders.
- Telescopic boathook.

Covers, Canvas & Cushions:

- Windscreen cover.
- Forward cockpit camper cover with vertical screen behind radar arch.
- Instrument cover.
- Cockpit seat covers.
- Bow sun bathing cushions with cover.

Tender & Outboard:

- Avon inflatable dinghy with (not fitted to snap davits).
- 2hp Yamaha outboard motor with storage bracket.

Safety Equipment:

- Plastimo 6 man liferaft (canister) stored in stainless steel cradle under aft cockpit seat. Last service date 01/2012. Next service due 01/2015.
- Snap davits with stand-off arms.
- Lifebelt with light.

Fire-fighting equipment:

- Seafire automatic fire extinguishing system in engine compartment.
- 4 x Fire extinguishers.
- Fire blanket.

Exclusions

Owner's personal belongings.

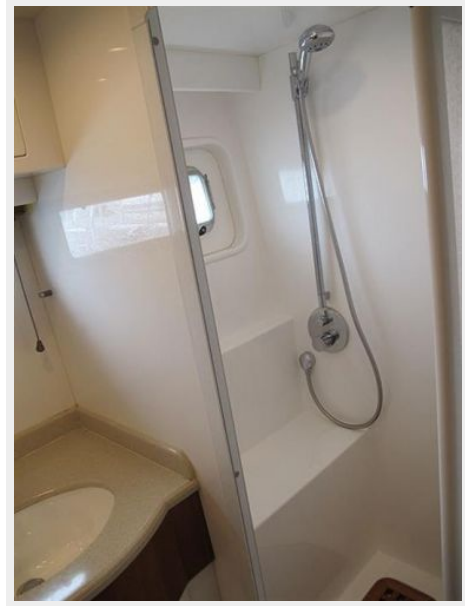
Disclaimer

The Company offers the details of this vessel or yacht in good faith but cannot guarantee or warrant the accuracy of this information nor warrant the condition of the vessel. A buyer should instruct his representatives, agents, or his surveyors, to investigate such details as the buyer desires validated. This vessel or yacht is offered subject to prior sale, price change, or withdrawal without notice.

PHOTOS







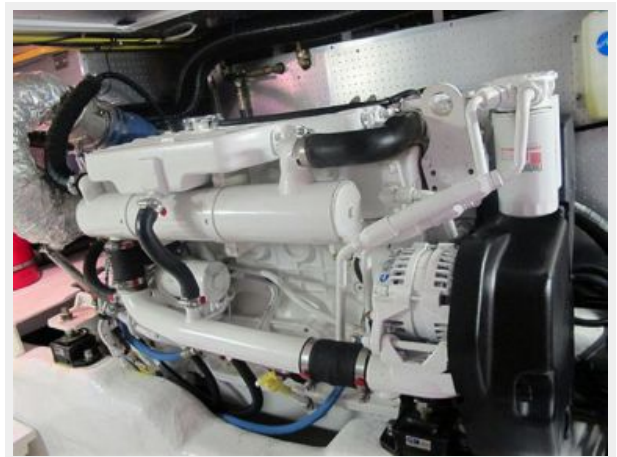
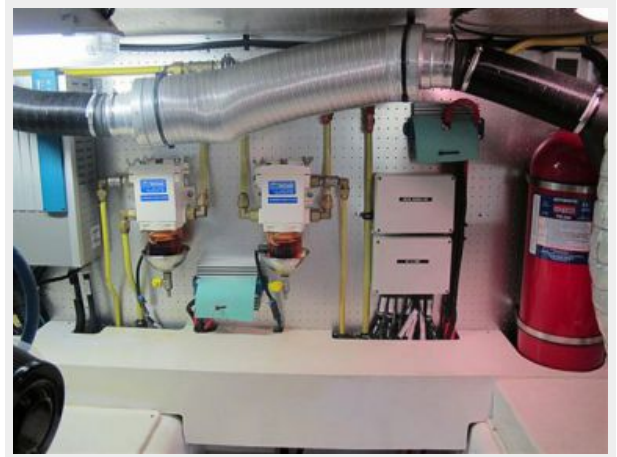


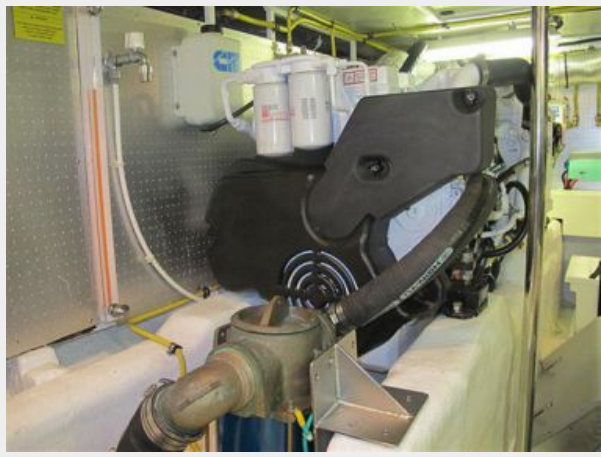






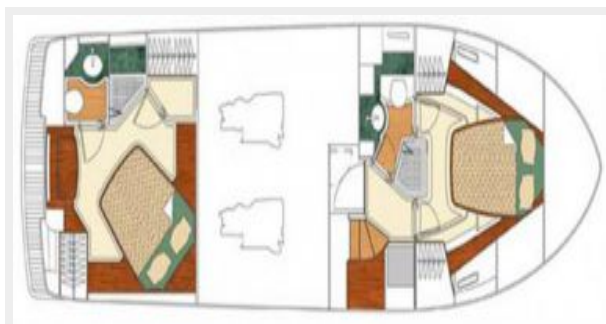
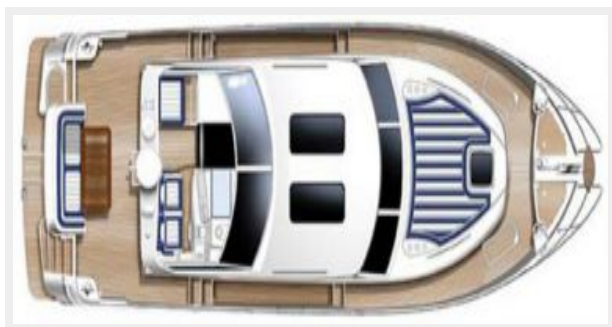












CONTACTS

Andrey Shestakov, leading yacht broker of the sales department of Shestakov Yacht Sales Inc. Shestakov Yacht Sales Inc., the official representative of the Miami/Fort Lauderdale FL headquarters.

Contact details

Email: andrey@shestakovyachtsales.com

Web: shestakovyachtsales.com/en/

Telephones

USA: +1(954)274-4435

Office hours

Monday – Saturday: **9:00 - 21:00** EDT

Sunday: **closed**

Address



Harbour Towne Marina, 850 NE 3rd St,
STE 213, Dania, FL 33004