

FUSION — GRAND ALASKAN



Судостроитель: GRAND ALASKAN

Год постройки: 2000

Модель: Моторная яхта

Цена: ЦЕНА ЯХТЫ ПО ЗАПРОСУ

Местонахождение: United States

Длина общая: 60' 0" (18.29m)

Ширина: 17' 2" (5.23m)

Макс. осадка: 4' 9" (1.45m)

Крейс. скорость: 12 Kts. (14 MPH)

Макс. скорость: 15 Kts. (17 MPH)

Купить Fusion — GRAND ALASKAN а также выбрать подходящую вам яхту из нашего каталога яхт вам поможет опытный яхтенный брокер Андрей Шестаков. На сегодняшний день компания Shestakov Yacht Sales Inc. имеет большое количество яхт в собственном списке продаж, а также тесно сотрудничает со всеми крупными яхтенными производителями по всему миру.

Для того чтобы купить яхту Fusion — GRAND ALASKAN а также проконсультироваться по любому вопросу связанному с покупкой, продажей, чартером яхт позвоните по телефону **+7(918)465-66-44**.

ОГЛАВЛЕНИЕ

ОГЛАВЛЕНИЕ	2
ХАРАКТЕРИСТИКИ	4
Основная информация	4
Размеры	4
Скорость, вместимость и масса	4
Размещение	4
Корпус и палуба	4
Информация о двигателе	5
ПОДРОБНОЕ ОПИСАНИЕ	6
Introduction	6
Salon	6
Master Head	6
Pilothouse	6
Fly bridge	7
Guest/Crew Stateroom	8
Forward Head	8
Forward VIP Stateroom	8
Engine & Mechanical Equipment	8
Deck Equipment	9
Broker Remarks	10
Galley	10
Master Stateroom	10
Исключения	11
Отказ от ответственности	11
ФОТОГРАФИИ	12
КОНТАКТЫ	18
Контактная информация	18
Телефоны	18

Время работы	18
Адрес	18

ХАРАКТЕРИСТИКИ

Основная информация

Тип судна: Моторная яхта

Модельный год: 2000

Год постройки: 2000

Страна: United States

Открытая палуба мостика: Да

Размеры

Длина общая: 60' 0" (18.29m)

Ширина: 17' 2" (5.23m)

Макс. осадка: 4' 9" (1.45m)

Скорость, вместимость и масса

Крейс. скорость: 12 Kts. (14 MPH)

Макс. скорость: 15 Kts. (17 MPH)

Вместимость воды: 350 Gallons

Объем топливного бака: 1300 Gallons

Размещение

Всего кают: 3

Корпус и палуба

Материал корпуса: Fiberglass

Информация о двигателе

Двигатели: 2

Производитель: Caterpillar

Модель: 3196

Тип двигателя: Inboard

Тип топлива: Diesel

ПОДРОБНОЕ ОПИСАНИЕ

Introduction

This is an extremely well equipped long range cruiser which has been continually upgraded by a knowledgeable owner. The vessel has only become available due to a change in Owner's plans. Extensive upgrades from 2010 through 2012. Put this one at the top of your list!

Salon

Enter through double aft doors into this truly inviting salon with built in seating, entertainment center and large Panasonic flat screen TV (replaced 2010). There is ample storage throughout with seating at the pass through bar. A Day Head is featured to starboard across from the Galley.

- Air conditioning
- L-shaped lounge sofa to port
- Hi-lo table
- Carpeting
- Barrel chair to starboard
- Bose stereo system w/ Bose speakers throughout
- New 42" TV 2010 with satellite reception
- CD/DVD player by Bose

Master Head

Master Head:

- Raritan electric head
- Large sink & cabinet
- Stall shower w/ enclosure
- Granite countertops

Pilothouse

Entering this pilothouse the experienced yachtsman will feel he has everything at his fingertips for cruising comfort. All electronics were extensively updated in 2011 and 2012.

- ICOM VHF IC-M604
- Raytheon ST60 wind indicator
- AP20 autopilot with remote
- Raytheon ST60 ships speed indicator

- Raytheon ST60 depth indicator
- Intercom system (accesses all areas of vessel and fly bridge)
- Raytheon E-120 GPS/ radar
- Garmin GPS Map 7215(2011)
- New Furuno depth sounder
- Naiad stabilizer controls
- Upgraded 25 hp Wesmar bow thruster (new 2011 - \$14,000)
- Fireboy fire suppression actuator
- Maxwell windlass control
- 2010 – Avanti wine chiller
- ACR spotlight control
- Glendinning controls with synchronizer

The helm seat is a very comfortable Stidd chair. Aft of the helm chair is an elevated lounge seat that can easily accommodate 4 guests. The table here folds down for dining and can accommodate 6 to 8 easily. This lounge area can double as another berth if needed. As many have said “this is the best seat in the house”. It’s warm and dry in foul weather and cool and comfortable in the hottest weather. Leading up the stairs to starboard one enters the fly bridge through a sliding Lucite hatch.

Fly bridge

The massive fly bridge has it all – comfortable seating for a crowd, twin Stidd helm and companion seats forward at the console, icemaker and refrigerator.

- Marquipt 1500 lb. dinghy davit
- 12' Novurania tender with 50 hp 4 stroke electric start motor, VHF, and depth sounder
- Bimini and partial enclosure
- Large storage box
- Wet bar
- Givens canister life raft
- Textilene weather canvas all around safety railings

Fly bridge Helm:

- New Bimini top and 3/4 enclosure 2014
- VHF
- Autopilot control
- Furuno depth
- E-120 Raytheon/radar
- Garmin GPS Map 7215 (2011)
- Trim tab indicators
- Trim tab controls
- Windlass controls

- Bow thruster controls
- ACR spotlight
- 6" Danforth compass
- Naiad stabilizer controls
- Stereo/CD player

The arch on the fly bridge is also hinge to allow folding aft, making Great Lakes transits possible.

Guest/Crew Stateroom

The Two forward staterooms and head are accessed down the companionway forward of the pilothouse on the starboard side.

- Upper & lower berths with storage
- TV & reading lamps
- Air conditioning
- Intercom
- Carpeting
- Port lights with duet shades

Forward Head

The Forward Head is located across the companionway from the Guest Stateroom.

- Enclosed shower
- Raritan electric toilet
- Large sink with granite countertops
- Storage & vanity

Forward VIP Stateroom

- Centerline queen berth with storage
- 2 hanging lockers
- Large access hatch overhead with cover
- Twin port lights each side with duet shades
- TV & stereo w/ CD player
- Ample storage
- Telephone outlet

Engine & Mechanical Equipment

The engine room is accessed either through watertight doors into the lazarette or the Master Stateroom.

- Twin 3196 TA CAT diesel engines
- 8 kw Northern Lights generator
- 16 kw Northern Lights generator
- Electronic engine controls by Glendinning
- Oil transfer system
- Spare propellers
- Raw water sea strainers
- Spare shaft
- Separate battery system for new (2011) 25 hp bow thruster
- Fire Boy fire suppression system
- Newmar 24/140 amp charger
- Fuel sight gauges for accurate fuel assessment
- Fuel transfer pump
- PAR fresh water pump
- Tank water holding tank monitor
- 500 gpd water maker (in Lazarette)
- Racor filters for engine and generator
- CAT systems gauges & start & stop in engine room w/ hr. meters
- High water alarm
- Freedom Marine 2500 watt inverter/1 30 amp charger
- (4) 8D house batteries
- All engine coolers serviced 12/2014

Deck Equipment

- Windshield covers
- Forward and aft 50 amp shore power connections & TV cable inlets
- (3) windshield wipers with washers
- Helm cover on fly bridge
- Twin roller anchor system
- Delta anchor with 200 ft. chain
- CQR anchor w/ 200 ft. chain
- Givens life raft
- Aft deck seating
- Swim ladder on swim platform
- Bow rail
- Flagstaff & burgee staff
- Distress signal kit
- Deck lighting – 4 sides gates, two aft, two amidships
- 5 step Marquipt boarding step

- Aft deck & engine room monitors
- Engine block heaters
- Frigidaire washer and dryer in Lazarette

Broker Remarks

This is an extremely well equipped long range cruiser which has been continually upgraded by a knowledgeable owner. The vessel has only become available due to a change in Owner's plans. Put this one at the top of your list!

Galley

The galley features all full sized appliances and granite countertops.

- New larger stainless steel sink and spigot 2011
- New Whirlpool stainless steel refrigerator (December 2014)
- GE Profile 4 burner stovetop
- Stainless steel convection/microwave oven (new 2014)
- Sinkerator garbage dispenser
- Hot water dispenser
- Pantry
- 18 gallon hot water capacity
- Granite countertops

Master Stateroom

This stateroom is located amid ship allowing total privacy and is at the center of gravity to minimize "at anchor" pitching.

There is storage all around the centerline king sized berth. Night tables located to port & starboard.

- Telephone outlet
- CD player
- Reading lamps
- Intercom
- Hanging locker
- Built in vanity with mirror
- Ensuite head to starboard
- TV - new 32" Panasonic
- Air conditioning

Engine Room is accessed in aft bulkhead (with double doors).

Исключения

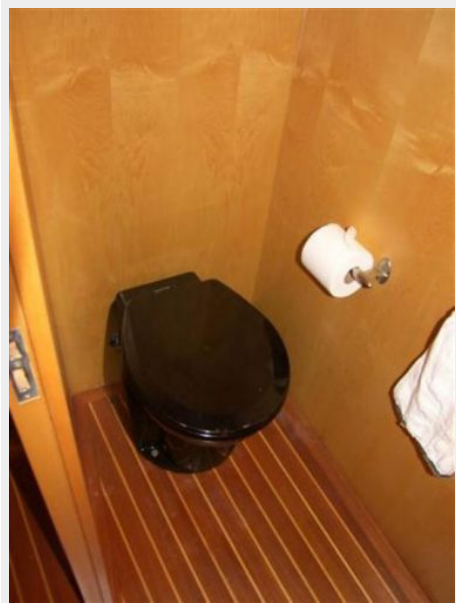
При продаже яхты исключаются личные вещи владельца.

Отказ от ответственности

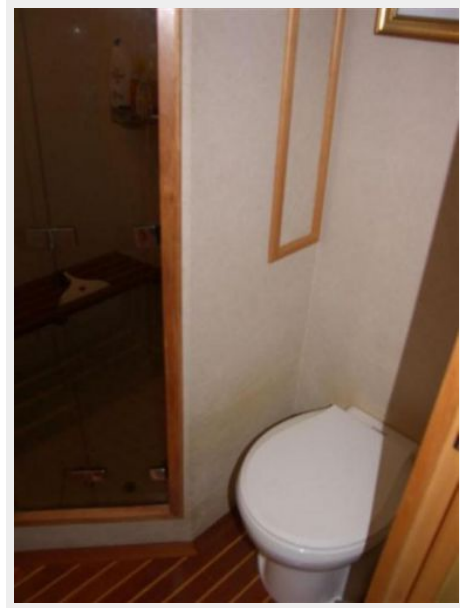
Компания предоставляет описание судна или яхты добросовестно, но не может гарантировать точность этой информации, а также не ручается за техническое состояние. Покупатель должен проинструктировать своих агентов или оценщиков исследовать представленную информацию более подробно, по собственному желанию. Продажа судна или яхты, изменение цены или снятие с продажи будет происходить без предварительного уведомления.

ФОТОГРАФИИ

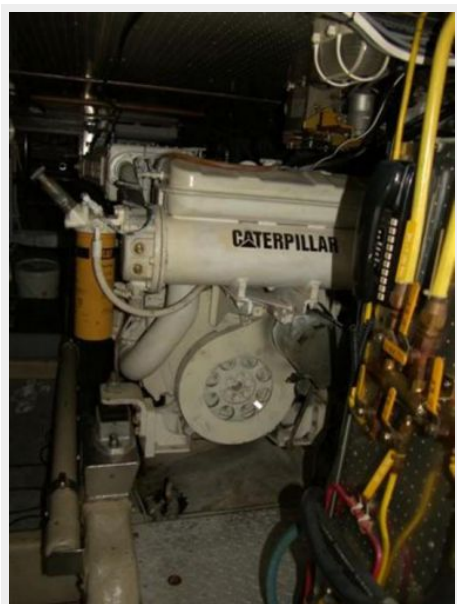
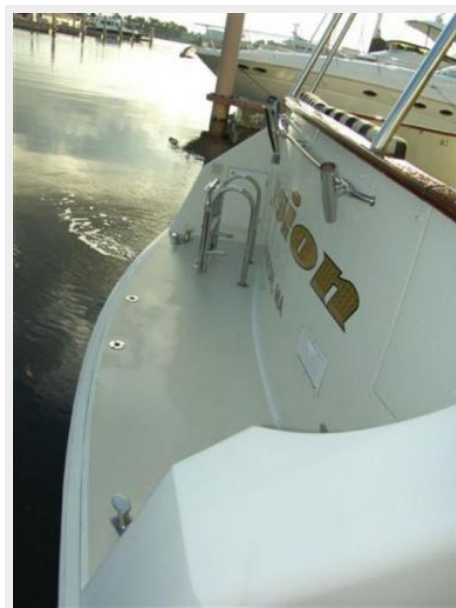
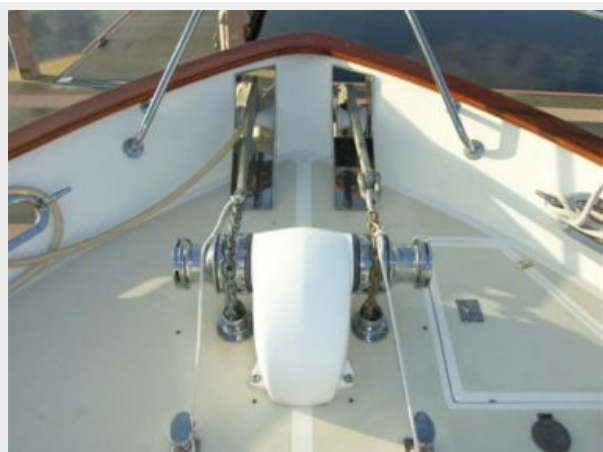












КОНТАКТЫ

Андрей Шестаков (Andrey Shestakov) – ведущий яхтенный брокер отдела продаж яхт и судов компании Shestakov Yacht Sales Inc. Официальный представитель Shestakov Yacht Sales Inc. для русскоговорящих клиентов в центральном офисе компании в Майами/Форт Лодердейл/Флорида/США.

Контактная информация

Email: andrey@shestakovyachtsales.com

Web: shestakovyachtsales.com

Телефоны

Краснодарский край: **+7(918)465-66-44**

США, Майами, Флорида: **+1(954)274-4435**

Время работы

Понедельник – Суббота: **9:00 - 21:00**
EDT

Воскресенье: **Закрито**

Адрес



Harbour Towne Marina, 850 NE 3rd St,
STE 213, Dania, FL 33004