

2006 BENETTI 115' CLASSIC @ FORT LAUD — BENETTI



Builder: [BENETTI](#)

Year Built: 2006

Model: Mega Yacht

Price: PRICE ON APPLICATION

Location: United States

LOA: 115' 0" (35.05m)

Beam: 24' 11" (7.59m)

Max Draft: 6' 11" (2.11m)

Cruise Speed: 12 Kts. (14 MPH)

Max Speed: 16 Kts. (18 MPH)

Our experienced yacht broker, Andrey Shestakov, will help you choose and buy a yacht that best suits your needs 2006 Benetti 115' Classic @ Fort Lauderdale — BENETTI from our catalogue. Presently, at Shestakov Yacht Sales Inc., we have a wide variety of yachts available on our sale's list. We also work in close contact with all the big yacht manufacturers from all over the world.

If you would like to buy a yacht 2006 Benetti 115' Classic @ Fort Lauderdale — BENETTI or would like help answering any questions concerning purchasing, selling or chartering a yacht, please call +1(954)274-4435

TABLE OF CONTENTS

TABLE OF CONTENTS	2
SPECIFICATIONS	4
Overview	4
Basic Information	4
Dimensions	4
Speed, Capacities and Weight	4
Accommodations	5
Hull and Deck Information	5
Engine Information	5
DETAILED INFORMATION	6
Tax Not Paid	6
Accommodations	6
Features	6
Main Salon	7
Galley	7
Upper Deck Salon	7
Master Stateroom	7
VIP Staterooms	7
Guest Stateroom	8
Electronics and Navigation	8
Generator	8
Exclusions	8
Disclaimer	8
PHOTOS	10
CONTACTS	17
Contact details	17
Telephones	17
Office hours	17

Address

17

SPECIFICATIONS

Overview

2006 BENETTI 115 Classic @ Fort Lauderdale NOT FOR SALE TO US RESIDENTS WHILE IN US WATERS.TWIN GENERATORS KOHLER (55KW) HOURS PORT: 10,612 HOURS STBD: 10,598 She is not comercial

Basic Information

Category: Mega Yacht

Model Year: 2006

Year Built: 2006

Country: United States

Vessel Top: Radar Arch and Bimini

Fly Bridge: Yes

Cockpit: Yes

Dimensions

LOA: 115' 0" (35.05m)

Beam: 24' 11" (7.59m)

Max Draft: 6' 11" (2.11m)

Speed, Capacities and Weight

Cruise Speed: 12 Kts. (14 MPH)

Cruise Speed Range: 3000

Max Speed: 16 Kts. (18 MPH)

Gross Tonnage: 247 Pounds

Water Capacity: 1664.2839276 Gallons

Fuel Capacity: 10038.537976 Gallons

Accommodations

Total Cabins: 5

Total Berths: 7

Sleeps: 12

Total Heads: 7

Captain Cabin: True

Crew Cabin: 4

Crew Berths: 7

Crew Sleeps: 7

Crew Heads: 3

Hull and Deck Information

Hull Material: GRP

Deck Material: Teak over Fiberglass

Hull Configuration: Semi-Displacement

Hull Color: White

Hull Finish: Fiberglass

Exterior Designer: Stephano Righinni

Interior Designer: Francois Zuretti

Engine Information

Engines: 2

Manufacturer: Caterpillar

Model: C30

Engine Type: Inboard

Fuel Type: Diesel

DETAILED INFORMATION

Tax Not Paid

Tax Not Paid

Accommodations

Launched in 2006, is part of the highly popular Benetti Classic family. The Benetti Classic 35 has become one of the most sought after models in the 35m range of super yachts, and has been crowned by her builder as the jewel of the fleet.

Offers luxurious accommodation for 12 guests, with 2 VIP cabins, 2 guest cabins on the lower deck, and a large and beautiful owner's suite on the main deck. Her timeless and elegant interior has been styled by famous designer Zuretti Interior Design and is one of his finest.

Part of the success of the Benetti Classic 35 series comes from the large amount of deck space, completely devoted to owner and guests. The main tender is stored in a cleverly designed stern garage, leaving the aft decks free for use. The main aft deck offers a large settee set back against the aft bulkhead, an ideal place to relax with a cocktail in hand, from the main deck bar. Double stairs lead down to her large swimming platform. The upper aft deck offers shaded dining for 10, and offers another lounging area, which can be shaded by an awning. Her sundeck offers ample space for sun loungers, and features a large bar. This is the ideal deck to sit back, and enjoy breathtaking views.

Powered by twin Caterpillar C30's, cruises comfortably at 12 knots, and reaches a top speed of just over 16 knots. She is the ideal family yacht.

Features

- Construction: GRP Hull - GRP Superstructure - Teak Decks
- Exterior Design: Stefano Righini
- Interior Design: Francois Zuretti

Main Salon

- ◦ Satellite Signal; Sky Mexico, Sky Italia, Direc TV Americano, Direc TV Latino.
- Sony Blu Ray/DVD BDP-S6500
- Yamaha Amplifier
- 42" LG LED-TV 3D 42LB720V
- Bose Speakers
- IPOD Dock / Apple TV

Galley

- Miele microwave oven
- 6 burner Miele electric stove autovario
- Glem conventional oven
- Miele dishwasher
- (2) Frigit refrigerators
- (2) Frigit freezers

Upper Deck Salon

- ◦ Satellite Signal; Sky Mexico, Sky Italia, Direc TV Americano, Direc TV Latino.
- Sony Blu Ray/DVD BDP-S6500
- Yamaha Amplifier
- 42" LG LED-TV 3D 42LB720V
- Bose Speakers
- IPOD Dock / Apple TV

Master Stateroom

- Yamaha Amplifier HTR-2866
- Sony Blue Ray/DVD BDP-S6500
- 40" Samsung Smart TV 3D UE50H6200AY
- Bose Speakers
- Satellite Signal; Sky Mexico, Sky Italia, Direc TV Americano, Direc TV Latino.

VIP Staterooms

- TV/Monitor Samsung LT24D310

- Sony Blu Ray/DVD BDP-S6500
- Sony auto stereo MOD CDX-GT100
- Satellite Signal; Sky Mexico, Sky Italia, Direc TV Americano, Direc TV Latino.

Guest Stateroom

- Sony auto stereo MOD CDX-GT100

Electronics and Navigation

- (2) Furuno Navnet VX2 radars
- Furuno GP-37 DGPS WAAS
- Furuno satellite compass
- Furuno AIS FA-50 MCA
- Sperry marine automatic pilot Navipilot V HSC
- Maine systems Naiad stabilizaors
- Sperry marine magnetic compass, Northop Grumman
- B&G, Hydra 2000
- Panasonic CCTV system controller, WV-CU360 CJ
- Kahlenberg whistle control
- Sanshin electric corp search light
- Furuno Navnet NX-700
- Sailor MF, HC4500B
- KVH Mini VSAT broadband
- Thrane and Thrane trackphone
- Nobeltec with Trident version Navigator electronic chart W/CPU back up

Generator

- Twin Kohler (55KW)
- Hours Port: 10,612
- Hours Stbd: 10,598

Exclusions

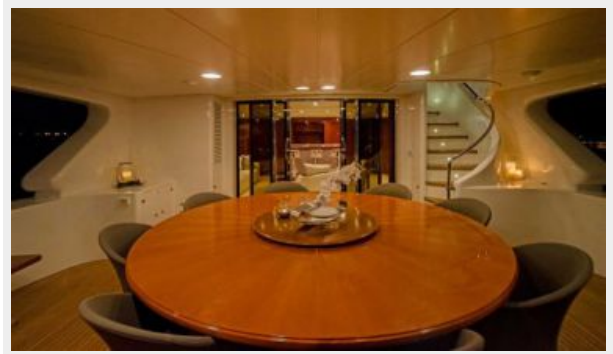
Owner's personal belongings.

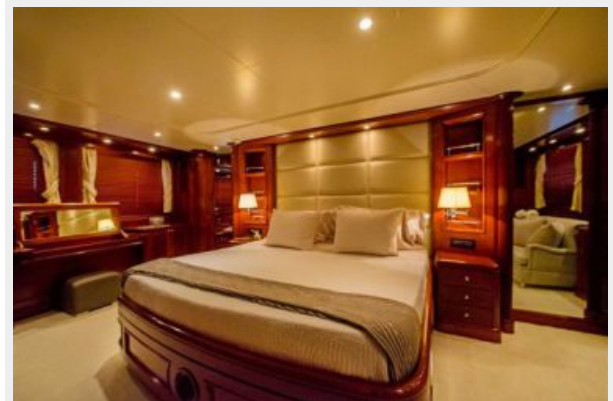
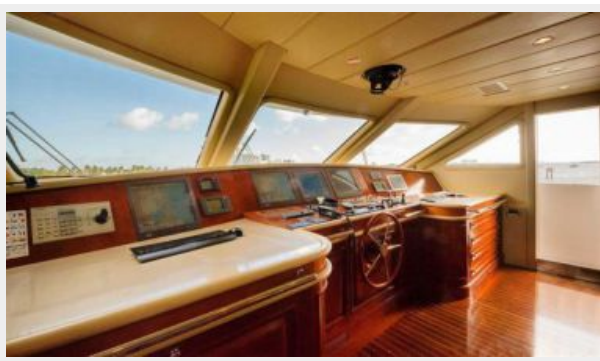
Disclaimer

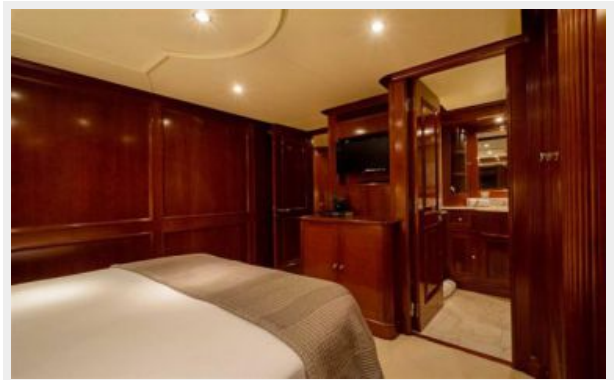
The Company offers the details of this vessel or yacht in good faith but cannot guarantee or warrant the accuracy of this information nor warrant the condition of the vessel. A buyer should instruct his representatives, agents, or his surveyors, to investigate such details as the buyer desires validated. This vessel or yacht is offered subject to prior sale, price change, or withdrawal without notice.

PHOTOS

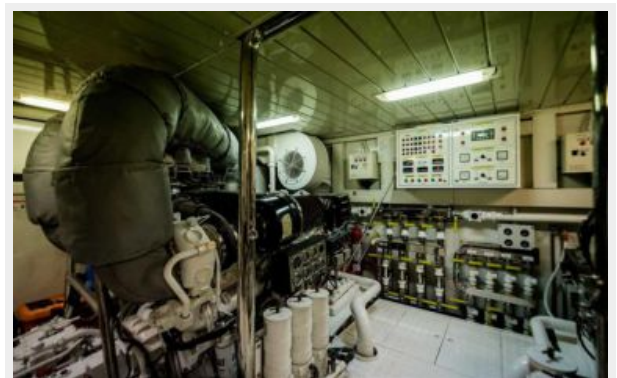


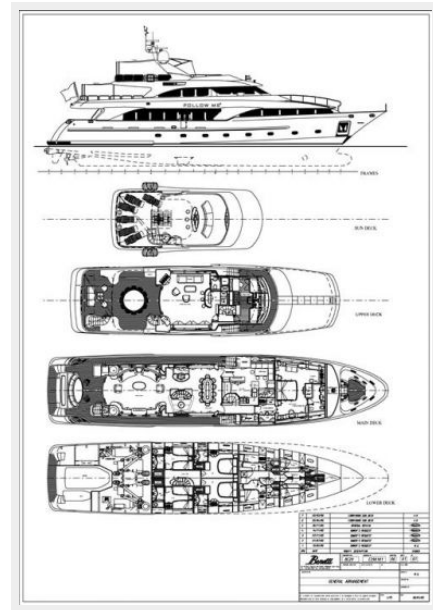












CONTACTS

Andrey Shestakov, leading yacht broker of the sales department of Shestakov Yacht Sales Inc. Shestakov Yacht Sales Inc., the official representative of the Miami/Fort Lauderdale FL headquarters.

Contact details

Email: andrey@shestakovyachtsales.com

Web: shestakovyachtsales.com/en/

Telephones

USA: +1(954)274-4435

Office hours

Monday – Saturday: **9:00 - 21:00** EDT

Sunday: **closed**

Address



Harbour Towne Marina, 850 NE 3rd St,
STE 213, Dania, FL 33004