

## TALK N' TRASH — VIKING



**Судостроитель:** VIKING

**Год постройки:** 2001

**Модель:** Катер для спортивной рыбалки

**Цена:** **ЦЕНА ЯХТЫ ПО ЗАПРОСУ**

**Местонахождение:** United States

**Длина общая:** 65' 0" (19.81m)

**Ширина:** 18' 10" (5.74m)

**Мин. осадка:** 6' 1" (1.85m)

**Крейс. скорость:** 28 Kts. (32 MPH)

**Макс. скорость:** 32 Kts. (37 MPH)

Купить **Talk N' Trash — VIKING** а также выбрать подходящую вам яхту из нашего каталога яхт вам поможет опытный яхтенный брокер Андрей Шестаков. На сегодняшний день компания **Shestakov Yacht Sales Inc.** имеет большое количество яхт в собственном списке продаж, а также тесно сотрудничает со всеми крупными яхтенными производителями по всему миру.

Для того чтобы купить яхту **Talk N' Trash — VIKING** а также проконсультироваться по любому вопросу связанному с покупкой, продажей, чартером яхт позвоните по телефону **+7(918)465-66-44**.

# ОГЛАВЛЕНИЕ

ОГЛАВЛЕНИЕ	2
ХАРАКТЕРИСТИКИ	4
Обзор	4
Основная информация	4
Размеры	5
Скорость, вместимость и масса	5
Размещение	5
Корпус и палуба	5
Информация о двигателе	6
ПОДРОБНОЕ ОПИСАНИЕ	7
Accommodations	7
Salon	7
Master Stateroom	8
VIP	8
Guest	8
Galley	8
Fly Bridge	9
Deck Equipment	9
Cockpit	10
Electronics & Navigational Equipment	10
Engine & Mechanical Equipment	11
Tuna Tower	11
REPLACED	12
SERVICED	13
Remarks	14
Exclusions	15
Исключения	15
Отказ от ответственности	15

---

ФОТОГРАФИИ	16
Crew	18
КОНТАКТЫ	20
Контактная информация	20
Телефоны	20
Время работы	20
Адрес	20

# ХАРАКТЕРИСТИКИ

## Обзор

**TRASH” - UPDATES - JULY 2012 Replaced** Air Conditioning System: 6 - marine air conditioning system control panels and new control circuits boards for each replaced NAIAD Dynamics: Main ECU component User Panel Servo Valve component Potentiometer Kit Bow Thruster System - Main Control Module Electronics System and Electronics Package including: 2 Navnet Touch Screen Display 4 Shakespeare Galaxie 17 FT. VHF Antenna Icom SSB Radio to replace Sea 2250 AC 140 Antenna Coupler for SSB Radio Furuno Mfd 12 to replace N.S. 961xd Furuno Mfd 12 to replace N.S. 9S2x MU19 HD Furuno 19" Monitor Video Switcher 6 Channel FCV 1200 3kw Sounder HUB101- Furuno LH3-000 - Loud Hailer 2 RD30 Digital Data Center Marine Stereo Enclosed Fly Bridge MRD801 6 Disk CD Changer 4 - 6" Round Speakers 3 - RCA Direct Receivers KVH M 5 SAT TV System Multi Switch 2 in 6 out Furuno Radar Gear Box DRS 25A XN13A/6 FT. Radar Antenna PSU 13 For DRS25a Radar Sharp LCD TV 19" Bridge Panasonic Phone System VP Box PG500R Rate Compass 3 - Quantum VHF Radio's Standard VHF Quantum Fly Bridge GP 32 Furuno GPS Fly Bridge B&G System Pack BGH30021 Unlock Code for Furuno Chart Plotter Satellite Phone Fleet Broad Band 150 Motorola Cell 3 watt Digital M930 Simrad Auto Pilot AP2803 System with J box/pum/rudder feedbackfeedback Sirius Sat Antenna Sirius Sat Tuner Transducer Temp Depth AIS System FA 150 - Furuno AIS Antenna PB150 Wind Speed/Ection BBWX2 Satellite Weather System V700 Windless Gateway Desktop Computer with Wireless Keyboard 2 - Underwater Lights and motor assembly Custom upholstery Electronic Door Opener Compressor Windshield Wipers and Controls Fresh Water Pump Village Marine Tec Water Maker Electrical Panels: AC Volt Meter ACamp Meter LED light Strips Glendenning Cable Master Shore System Hallway lighting

## Основная информация

**Тип судна:** Катер для спортивной рыбалки

**Модельный год:** 2001

**Год постройки:** 2001

**Год обновления:** 2008

**Вид обновления:** Full

**Страна:** United States

**Номер регистрации в береговой охране:** 1174719

**Верх:** Full / Tuna Tower

**Открытая палуба мостика:** Да

**Кубрик:** Да

## Размеры

---

**Длина общая:** 65' 0" (19.81m)

**Ширина:** 18' 10" (5.74m)

**Мин. осадка:** 6' 1" (1.85m)

## Скорость, вместимость и масса

---

**Крейс. скорость:** 28 Kts. (32 MPH)

**Макс. скорость:** 32 Kts. (37 MPH)

**Водоизмещение:** 96000 Pounds

**Вместимость воды:** 360 Gallons

**Объем топливного бака:** 2000 Gallons

## Размещение

---

**Всего кают:** 4

**Спальные места:** 6

**Всего ком. состава:** 3

**Каюты экипажа:** 1

**Койки экипажа:** 2

**Спальных мест экипажа:** 2

**Комм. состав экипажа:** 1

## Корпус и палуба

---

**Материал корпуса:** Fiberglass

**Материал палубы:** Fiberglass

**Цвет корпуса:** White

**Отделка корпуса:** Fiberglass

**Дизайнер корпуса:** Viking

## Информация о двигателе

---

**Двигатели:** 2

**Производитель:** Caterpillar

**Модель:** C32 ACER-T

**Тип двигателя:** Inboard

**Тип топлива:** Diesel

---

# ПОДРОБНОЕ ОПИСАНИЕ

---

## Accommodations

---

This vessel offers the optimum four stateroom arrangement. As you enter the salon, the U-shaped salon sofa is to port, with main electric panel, credenza storage and entertainment center to starboard. Moving forward is the teak parquet floored galley and dinette arrangement. Walking down the companionway steps you will find a stacked washer/dryer behind a cabin door to starboard with storage aft. To port and aft, down two steps are the crew quarters, with private head and shower, two (2) very generous upper and lower bunks with private access to the engine room. Moving forward to starboard is a luxurious guest head with mirrored cabinets, custom wallpaper, teak parquet flooring and private shower. Just forward of the head to port, is the master suite. This large master suite with almost king size bed which lifts up offering ample storage below has a soft feel with beautiful cabinetry accented by custom wallpaper, an elegant spread, and indirect lighting. A guest stateroom with bunk arrangement, full hanging lockers, and storage below bottom lift up bunk is just forward of guest head. The spacious forward stateroom or VIP is arranged with a large double bed to port with a starboard upper bunk. A private head and shower adjoins this room to starboard. A TV/VCR is forward to port.

- Brass bumper catches on all cabin doors in place of hook and eye catches
- Additional microwave convection located above dinette cabinet doors with custom pull out drawer storage below
- Dimmer switches for molded-in quartz lights
- Rod storage below salon sofa
- Teak surface outboard of salon sofa for finished look
- Custom shelves in forward companionway and dinette cabinets
- American system hydraulic pneumatic salon door opener
- The FB speakers are wired to the cockpit with a separate switch in salon to play salon stereo through cockpit speakers or FB stereo through cockpit speakers with a separate volume control in salon for cockpit speakers.
- Covers for salon and flybridge sofas
- Phone jack with outlet for fax machine in utility room
- Baby ostrich headliner throughout-matching light switch
- Teak parquet flooring in all heads

## Salon

---

- Harmon Cardon AVR 400 Stereo tuner

- Sony DVD player
- JVC VCR
- JVC 25" TV
- Kenmoore Elite icemaker

---

## Master Stateroom

---

- Teak night tables in MSR
- Vanity cabinet at master entrance way is absolute black granite with teak bull nose
- Secured master stateroom large locker door with teak baton support
- All lamps are hardwired
- Safe below master bunk
- Fabricated custom vanity arrangement to allow place for stool with smaller bank of drawer's outboard
- Custom headboard-headliner material installed behind headboard in place of mirror
- Lock with key for master stateroom door
- Large cedar lined closet
- JVC 20" TV
- JVC stereo
- JVC VCR/DVD player

---

## VIP

---

- Forward VIP Stateroom
- Mirror on fwd stateroom bulkhead
- 13" color TV
- VCR
- Stereo/CD player, 12v
- Upgraded mattresses to System I innerspring
  
- Ample Storage Below Offset Queen

---

## Guest

---

- 13" TV/VCR combo
- Orthopedic mattresses on all guest bunks
- Full hanging locker
- Storage below bottom lift up bunk

---

## Galley

---



- 4 burner cook top
- Sharp Carousel convection oven
- Garbage disposal
- Sub-zero integrated refrigerator (under the counter drawer style)

## Fly Bridge

---

- Enclosed flybridge
- Spiral staircase
- Enclosed bridge custom decor package
- Cavity in hardtop for electric teaser reels
- Almond new style enclosed bridge settee with storage below and upgraded carpet
- Removable cocktail table with black granite surface flush teak bull nose, and teak base
- Painted inside of enclosed bridge door to match interior--new style aircraft grade door
- Black ultra leather Stidd helm chair
- Custom flat screen TV overhead in aft stbd corner
- Added access panels fwd in enclosed bridge headliner for ease in access of wire harnesses
- Aft overhang FB speakers, upgraded to MB quart
- wet bar sink with refrigerator and bottle storage to starboard below flat screen TV
- Detroit Diesel DDC control gauges with full engine function and diagnostics
- Bow thrusters American system control
- Battery parallel start/stops wiper switches etc. mounted above helm in soffit overhead for easy access and clean look
- Running lights installed fwd under lip of hardtop port and starboard
- Twin companion Viking cabinetry with storage below and decorator ultra leather fabric
- Almond bench seating port chair and starboard of Stidd helm

## Deck Equipment

---

- One hatch fwd only for cleaner look
- Fwd hatch is fwd approx 4" to accommodate room for tie downs and tender
- Brushed aluminum flybridge ladder
- Fuel fills on port and starboard sides
- Reinforced deck laminate where davit is located
- Bow thruster
- Viking Bow pulpit with stainless anchor chute
- Simpson Lawrence Sprint G&D Series with 600' line & 25' chain & fore deck toe switches
- Freshwater wash down spigot in anchor locker hatch on bow
- Oval exhaust tubes
- Flush mounted davit standpipe with removable Marquipt 1500 LB davit with hydraulic lift
- Removable chocks

---

## Cockpit

---

This vessel was built with the cockpit mezzanine option, allowing for more storage for brushes, mops, cleaning gear, life raft, lifejackets, lager freezer capabilities, crushed ice, and refrigerated step box. The owner does some fishing as well as cruising- the mezzanine is optimum for both. You can't beat the seating for entertaining or watching the spread.

- Dual Glendinning cable master; port & stbd concealed in dockside inserts below gunwales
- Cockpit speakers
- Sealand diaphragm pump for fish box drain
- Additional insulation in step box
- Freshwater and Saltwater wash down
- Eskimo ice machine plumbed to large custom fish box
- Y valve system to plumb Eskimo ice machine into large step at salon entrance or by moving slide. Crushed ice can be pumped into designated insulated fish box with divides
- Cockpit mezzanine
- Stainless gas shocks on mezzanine hatch lids
- Dual thermostat for mezzanine chill box in step
- Live well in port cockpit in-deck well

Oil exchange system is plumbed from engine room to stbd dockside insert box - as to change oil for main engines and generator from dock

- Extended tackle drawers on stbd side of mezzanine
- 2 fresh water spigots with quick disconnects
- Hook and eye catches from transom door and engine room door have been deleted and replaced with canvas strap
- Custom fish box incorporated into in-deck well
- Awl grip lazarette
- Compressors for cockpit freezer and step
- Bose 151 cockpit speakers in place of standard
- Custom top-loading freezer eliminating port tackle drawers in cockpit mezzanine
- Two additional rod holders for cockpit gunwale making a total of three for each side
- Three (3) Rupp rod holders in each cockpit haunch for a total of six (6) clearing rod holders
- Release marine large teak tuna chair with rocket launcher and polished stainless offset pedestal
- 12-volt outlets aft below gunwales

---

## Electronics & Navigational Equipment

---

- Simrad Bottom Machine EQ 50 with Chart plotter and 14" display
- (2) Standard Horizon Quantum GX2360S VHF's

- Seahail Hailer
- Sea 2250 HF/SSB control
- Satellite Phone
- Satellite TV
- Northstar 962 GPS/chart plotter
- Northstar 951X color backup GPS/chart plotter
- B&G HS 2000 nav/temp/speed depth sounder
- Simrad Robertson autopilot
- Furuno temp gauge w/ hi/lo water temp alarm
- Clarion marine Sirius radio
- Furuno 96 Mile Radar
- Carlisle & Finch Spotlight with Adjustable Focus for Flood or Spotlight Capabilities
- Cell Phone (Panasonic 3-Way System)
- Sharp 15" LC152 Flat screen TV

---

## Engine & Mechanical Equipment

---

- Everything in the engine room is new and covered under warranty - February 2008
- New Naiad Multi-sea II stabilizers
- Sleipner side power bow thruster
- Fuel priming pumps
- Water maker: 1,200 GPH
- Engine room crew stateroom Bomar door
- All brass seacocks, pickups and strainers all awl gripped
- Gas water separator for generator exhaust
- Painted and installed customer supplied toolbox
- Onan Generator (27.5kw )
  - *Additional* Onan Generator (21.5kw)
- Gauges are mounted directly into fiberglass at engine room access
- Racor (dual) Fuel Filters
- ZF marine transmissions
- Remote engine start/stop controls
- Self built over port generator
- Water/pump room fwd starboard for clean look
- Oil exchange system plumbed to starboard dockside insert in cockpit
- Eskimo Ice machine

---

## Tuna Tower

---

- Pipewelders custom tuna tower with molded stand platform and molded in quartz lights.
- Furuno GPS
- VHF

- B&G Depth & Speed indicator
- Hydraulic riggers

## REPLACED

---

### Air Conditioning System:

6- marine air conditioning system control panels and new control circuits boards for each replaced

### NAIAD Dynamics:

- Main ECU component
- User Panel
- Servo Valve component
- Potentiometer Kit

### Bow Thruster System- Main Control Module

### Electronics System and Electronics Package including:

- 2 Navnet Touch Screen Display
- 4 Shakespeare Galaxie 17FT. VHF Antenna
- Icom SSB Radio to replace Sea 2250
- AC 140 Antenna Coupler for SSB Radio
- Furuno Mfd 12 to replace N.S. 961xd
- Furuno Mfd 12 to replace N.S. 952x
- MU19 HD Furuno 19" Monitor
- Video Switcher 6 Channel
- FCV 1200 3kw Sounder
- HUB101- Furuno
- LH3000- Loud Hailer
- 2 RD30 Digital Data Center
- Marine Stereo Enclosed Fly Bridge MRD801
- 6 Disk CD Changer
- 4- 6" Round Speakers
- 3 - RCA Direct Receivers
- JVH M 5 SAT TV System
- Multi Switch 2 in 6 out
- Furuno Radar Gear Box DRS 25A
- XN13A/6 FT. Radar Antenna

- PSU 13 For DRS25a Radar
- Sharp LCD TV 19" Bridge
- Panasonic Phone System VP Box
- PG500R Rate Compass
- 3- Quantum VHF Radio's
- Standard VHF Quantum Fly Bridge
- GP 32 Furuno GPS Fly Bridge
- B&G System Pack BGH30021
- Unlock Code for Furuno Chart Plotter
- Satellite Phone Fleet Broad Band 150
- Motorola Cell 3 watt Digital M930
- Simrad Auto Pilot AP2803 System with J box/pum/rudder feedback
- Sirius Sat Antenna
- Sirius Sat Tuner
- Transducer Temp Depth
- AIS System FA 150- Furuno
- AIS Antenna
- PB150 Wind Speed/Ection BBWX2 Satellite Weather System
- V700 Windless
- Gateway Desktop Computer with Wireless Keyboard
- 2- Underwater Lights and motor assembly
- Custom Upholstery
- Electronic Door Opener Compressor
- Windshield Wipers and Controls
- Fresh Water Pump
- Village Marine Tee Water Maker
- Electrical Panels: AC Volt Meter, ACamp Meter, LED Light Strips
- Glendenning Cable Master Shore System
- Hallway Lighting

## SERVICED

---

2- Onan/Cummins Generators - Regulator Circuit Boards replaced in each

2- C32 Caterpillar Diesel Engines:

ECMS and all sensors replaced and reprogrammed New powertrain control installed and programmed

Installed station control modules and button panel on stern and tuna tower throttle stations

Replaced tachs in tuna tower and tested all Replaced digital converter module Replaced following parts:

- 10- Receptcles
- 2- 10 R-5646 Control G P
- 2- 106-0735 Control GP
- 2- Sensor GP 163-8512
- 4- Plug AS-RES 174-3016
- 4- Sensor GP-PR 194-6725
- 2- Sensor GP-SP 201-6615
- 2- Sensor GP 201-6616
- 2- Sensor 204-2518
- 9- Plug (Term) 208-0432
- 2- Sensor GP-PR 218-3840
- Control AS 219-8020
- 3 - Control AS 219-8021
- Control AS 219-8023
- 3 - Panel AS-BU 224-9873
- 2- Pickup AS 226-3424
- 6- Coolant ELC 238-8648
- 6- Sensor Temp 264-4297
- 2- Control GP-3 274-8068
- 2- Indicator 275-2104
- 2- Control GP-E307-7541
- 2- Control AS-E 323-7317
- 2- Connector- TE 346-1577
- 595 RTV Sili-Ciears 59530
- Furnuno 1623 Manual
- Fuel Filter 7-0860

Calibration of engines and trolling gears

## Remarks

---

This 2001 65' Viking Convertible is nothing short of extraordinary. The interior decor scheme is as rich and beautiful as they come. From custom granite countertops, to the custom wall covering, and with baby ostrich headliner throughout, the only word to describe it is breathtaking. The specs will show that this 65 includes every custom option available and then some, no expense was spared, during the construction and after market additions. The electronics package perfectly fills the 65' Viking's huge helm dash. The tower is rigged and ready, and the bow davit lets you take your toys! Everything is completely dialed in, turnkey and ready, to travel and fish your favorite cruising grounds.

---

## Exclusions

---

Owner's personal items and tools. Potential purchasers should not assume that items on the vessel at the time of viewing and not specifically listed on this offering specification, are included with the sale of the yacht.

---

## Исключения

---

При продаже яхты исключаются личные вещи владельца.

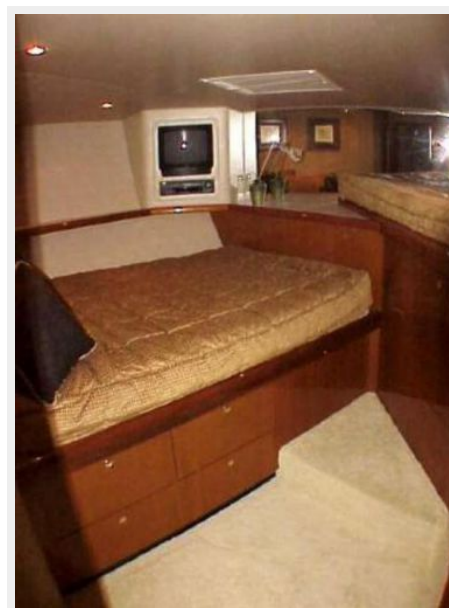
---

## Отказ от ответственности

---

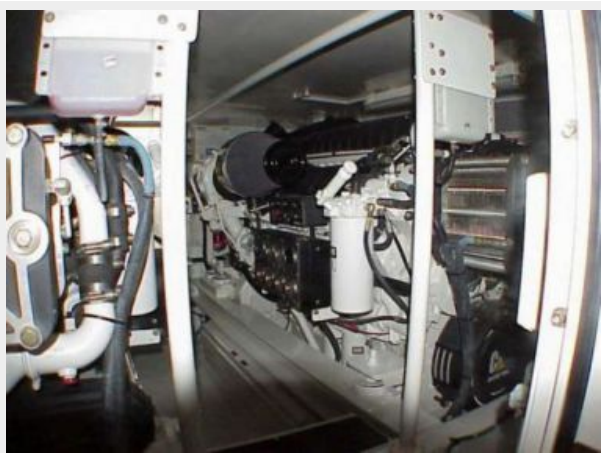
Компания предоставляет описание судна или яхты добросовестно, но не может гарантировать точность этой информации, а также не ручается за техническое состояние. Покупатель должен проинструктировать своих агентов или оценщиков исследовать представленную информацию более подробно, по собственному желанию. Продажа судна или яхты, изменение цены или снятие с продажи будет происходить без предварительного уведомления.

# ФОТОГРАФИИ









### Crew





# КОНТАКТЫ

---

Андрей Шестаков (Andrey Shestakov) – ведущий яхтенный брокер отдела продаж яхт и судов компании Shestakov Yacht Sales Inc. Официальный представитель Shestakov Yacht Sales Inc. для русскоговорящих клиентов в центральном офисе компании в Майами/Форт Лодердейл/Флорида/США.

## Контактная информация

---

Email: [andrey@shestakovyachtsales.com](mailto:andrey@shestakovyachtsales.com)

Web: [shestakovyachtsales.com](http://shestakovyachtsales.com)

## Телефоны

---

Краснодарский край: **+7(918)465-66-44**

США, Майами, Флорида: **+1(954)274-4435**

## Время работы

---

Понедельник – Суббота: **9:00 - 21:00**  
EDT

Воскресенье: **Закрито**

## Адрес

---



Harbour Towne Marina, 850 NE 3rd St,  
STE 213, Dania, FL 33004