

BENETEAU 49 GT FLY — BENETEAU



Builder: BENETEAU

Year Built: 2018

Model: Cruiser

Price: PRICE ON APPLICATION

Location: United States

LOA: 49' 0" (14.94m)

Beam: 14' 1" (4.29m)

Min Draft: 2' 4" (0.71m)

Max Draft: 3' 7" (1.09m)

Cruise Speed: 22 Kts. (25 MPH)

Max Speed: 27 Kts. (31 MPH)

Our experienced yacht broker, Andrey Shestakov, will help you choose and buy a yacht that best suits your needs Beneteau 49 GT Fly — BENETEAU from our catalogue. Presently, at Shestakov Yacht Sales Inc., we have a wide variety of yachts available on our sale's list. We also work in close contact with all the big yacht manufacturers from all over the world.

If you would like to buy a yacht Beneteau 49 GT Fly — BENETEAU or would like help answering any questions concerning purchasing, selling or chartering a yacht, please call +1(954)274-4435

TABLE OF CONTENTS

| | |
|------------------------------|----|
| TABLE OF CONTENTS | 2 |
| SPECIFICATIONS | 3 |
| Overview | 3 |
| Basic Information | 4 |
| Dimensions | 4 |
| Speed, Capacities and Weight | 4 |
| Accommodations | 4 |
| Hull and Deck Information | 5 |
| Engine Information | 5 |
| DETAILED INFORMATION | 6 |
| Engines | 6 |
| Electricity | 6 |
| Exterior | 6 |
| Interior | 7 |
| Exclusions | 10 |
| Disclaimer | 10 |
| PHOTOS | 11 |
| CONTACTS | 28 |
| Contact details | 28 |
| Telephones | 28 |
| Office hours | 28 |
| Address | 28 |

SPECIFICATIONS

Overview

Volvo IPS 600s

Express Cruiser with a unique concept, the Flyer Gran Turismo 49 Fly combines the precision and pleasure of powerful sports driving, similar to that of a sports car, and sharing unique moments with friends and family in a luxurious and glamorous atmosphere.

Its "flybridge terrace" is not reserved for the driver. Accessed by an elegant spiral staircase, the flybridge is now a real sea saloon with a large sun lounge surrounding a teak table.

The Beneteau 49 GT is the first boat to ever have a hull that is designed specifically for the use of Volvo's IPS drives. The design has provided Beneteau with a boat that has an incredibly smooth and responsive ride.

Below are just a few of the features on the beautiful 49 GT FLY:

- **3 (or 2) Cabins** + 2 Heads (with separate showers)
- Volvo D6 IPS600 2X435 HP Diesel
- **3 IPS docking stations including one in the cockpit**
- 13kw Cummins Onan generator with sound shield
- MAXPOWER bow thruster
- Flybridge
- **Tender Garage**
- **Hydraulic Swim Platform**
- Cockpit grill, wetbar and refrigerator
- DVD player and Bose surround sound
- Bose watertight speakers in cockpit and flybridge
- Dual Simrad NS12's in wheelhouse
- Repeater Simrad NS12 on flybridge
- Solid teak cockpit table with electric leg
- Real teak decks
- Ice maker in Salon
- 37" LCD TV mounted on electric stand
- Full beam master

See Boat Test's review by Captain Steve @ boattest.com

Every new Beneteau comes with a 3 year stem to stern warranty and a 7 year structural warranty backed by Beneteau.

This model is available for order.

Listing photos and specifications may not be of dealer's current inventory.

Basic Information

Category: Cruiser

Model Year: 2018

Year Built: 2018

Country: United States

Dimensions

LOA: 49' 0" (14.94m)

Beam: 14' 1" (4.29m)

Min Draft: 2' 4" (0.71m)

Max Draft: 3' 7" (1.09m)

Clearance: 16' 9" (5.11m)

MFG Length: 51' 2" (15.60m)

Speed, Capacities and Weight

Cruise Speed: 22 Kts. (25 MPH)

Cruise Speed RPM: 3000 Kts.

Max Speed: 27 Kts. (31 MPH)

Max Speed RPM: 3450 Kts.

Displacement: 27500 Pounds

Water Capacity: 170 Gallons

Holding Tank: 80 Gallons

Fuel Capacity: 344 Gallons

Accommodations

Total Cabins: 3

Total Berths: 3

Total Heads: 2

Hull and Deck Information

Hull Material: Fiberglass

Engine Information

Engines: 2

Manufacturer: Volvo

Model: D6 IPS 600

Engine Type: Inboard

Fuel Type: Diesel

DETAILED INFORMATION

Engines

Propulsion IPS:

- 2 x Volvo D6 IPS 600 - 2 x435 HP Diesel
- Fuel filter with decanter
- Sea water filter
- Air intakes on the deck for engine compartment cooling
- Hot air extraction forced by electric ventilators
- **Engine room foam soundproofed**
- Fire extinguishing system activated from the helm
- Stainless steel fuel filler

Electricity

- 8 Batteries 12V (4 Engine batteries 50 Ah + Service batteries 140 Ah)
- 3 Bilge pumps: 2 Electric pumps - 1 Manual pump
- 2 Extinguishers
- Inverter 12V/24V
- Battery Isolator
- Battery Charger 24 V 60 Ah
- 13 KVA Generator (Cummins Onan)
- 220 V shore power (1 x 30 amp and 1 x 50 amp on glendenning.)

Exterior

Deck Equipment

- Forward sun deck: 7'7" x 6'7"
- Forward sun pad with back rests and cup holders
- Forward peak decked in plain solid teak
- Navigation lights
- Fender rings underneath hand rails

Safety on Deck

- Half open pulpit in stainless steel with guardrail and hand rail
- 2 Stainless steel handrails on access to catwalk steps
- 2 Stainless steel handrails on forward sun deck
- 1 Grab rail behind the cockpit bench seat

Cockpit

- **Cockpit IPS joystick control**
- **Solid teak hydraulic swim platform**
- **Natural solid teak cockpit table with electric leg**
- Natural solid teak cockpit
- Water tight Bose speakers
- Cockpit unit with sink, grill, refrigerator, and storage
- 6 person seating convertible to sun bed
- Storage for liferaft on starboard side
- Cockpit shower hose
- Direct Lighting LED
- Steps leading to flybridge
- Water tight Bose speakers
- Pre-wired Cockpit TV

Tender Garage

- Garage for inflatable (9'4") tender and outboard engine, in position
- Electrically opened, using 2 electric struts
- Major engine access to Volvo D6's through tender garage
- Storage for fenders and swim ladder
- Electric winch for tender with remote control

Flybridge

- 6 person convertible seating into sun bed
- "Deckchair" and bench seats
- Pilot and copilot seats
- Second steering station (helm)
- Raymarine E120 W hybrid touch - chart plotter - depth sounder - GPS
- Raymarine VHF
- Pilot Raymarine ST 70 + Integrated gyrocompass
- Access to Fly-deck by steps passing over cockpit kitchen

Interior

Wheelhouse

- Headroom: 6'6"
- 3-leaved sliding window door with curtains (mirror tinted)
- dark oak laminate floors covered with ivory carpeting + Alpi Walnut joinery
- Lights (spotlights and indirect lights)

Steering Station

- **Dual Raymarine E120 W hybrid touch - Chart plotter - Depth sounder - GPS**
- Raymarine VHF coupled to AIS 650 system receiver
- Pilot Raymarine ST 70 + Integrated gyrocompass (autopilot)
- Volvo IPS joystick and throttles
- MAXPOWER bow thruster controls
- Transparent windscreen, black-lacquered uprights
- Mirror tinted side windows with blinds
- 2 Windscreen wipers with washers
- Demisting system
- Pilot and copilot bench with Bolster function
- Instrument panel painted with silk finish chestnut paint
- Compass, Revolution counter, Tiller angle indicator
- Engine function indicators on 7" Volvo digital display
- Interior socket 12 V for mobile phone
- Glove box

Wheelhouse Saloon

- Wooden 6-seater benchseat with beautiful fabric upholstery
- Saloon table matching joinery with electric pedestal
- Bar with panoramic view
- Storage space in bar unit and under bench seats
- 37" LCD TV mounted on electric "disappearing" stand
- 7" Pioneer DVD player - CD player - AM/FM radio

Galley

- Headroom: 6'6"
- Optimum storage space - introducing Magic Corner
- Stainless steel sink with mixer tap
- Ceramic hob (2 burners)
- White corian type worktop
- 24 L Microwave oven
- 270 L Fridge/Freezer
- Dishwasher
- Trash and Recycling Bin
- Cuttlery storage
- Opening hull porthole
- Dark oak laminate floors
- Cream-laquer finished cabinetry

Third Stateroom

- 2 single berths
- Marine mattress

- Hanging locker + Storage cupboards
- Ivoire Carpet

VIP Cabin (Forward)

- Headroom: 6'5"
- 1 Double berth (6'7" x 5'3")
- Marine mattress
- 2 Panoramic opening porthole-fitted portlights with blinds
- Closets and cubbyholes
- Ivory carpet
- 2 Drawers beneath bunk for stowage
- Strut-mounted bed
- Spotlight and reading light
- Mirror

VIP Head Compartment

- Headroom: 6'6"
- Vacuflush electric toilet + Holding tank (40 US Gal.)
- Shower separated with 2 swing doors
- Basin with mixer tap
- Mirror and storage space
- Automatic shower water drainage

Owner Cabin (Aft)

- Headroom: 7'1" - 5'3"
- Full beam cabin
- Double berth (6'7" x 5'7")
- Strut-mounted bed
- Marine mattress
- Padded bedstead, Alcantara
- Wardrobes, Hanger closets, Storage
- Spotlight and reading lighting
- 2 Panoramic opening porthole-fitted portlights with blinds
- Space for large flatscreen TV
- Meridian couch to port
- Mirror
- Ivory Carpet

Owner Head Compartment

- Headroom: 7'7"
- Vacuflush electric toilet + Holding tank (40 US Gal.)
- Shower separated with 3 swing doors

- Basin with mixer tap
- Mirror and storage space
- Automatic shower water drainage

Exclusions

Owner's personal belongings.

Disclaimer

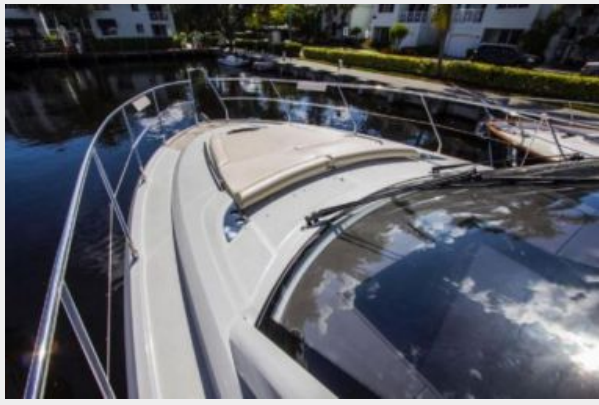
The Company offers the details of this vessel or yacht in good faith but cannot guarantee or warrant the accuracy of this information nor warrant the condition of the vessel. A buyer should instruct his representatives, agents, or his surveyors, to investigate such details as the buyer desires validated. This vessel or yacht is offered subject to prior sale, price change, or withdrawal without notice.

PHOTOS









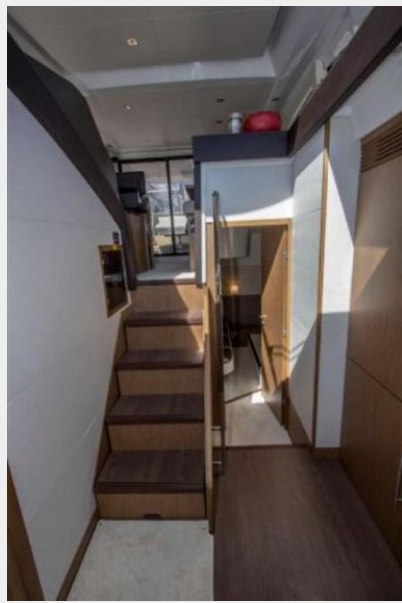


























CONTACTS

Andrey Shestakov, leading yacht broker of the sales department of Shestakov Yacht Sales Inc. Shestakov Yacht Sales Inc., the official representative of the Miami/Fort Lauderdale FL headquarters.

Contact details

Email: andrey@shestakovyachtsales.com

Web: shestakovyachtsales.com/en/

Telephones

USA: +1(954)274-4435

Office hours

Monday – Saturday: **9:00 - 21:00** EDT

Sunday: **closed**

Address



Harbour Towne Marina, 850 NE 3rd St,
STE 213, Dania, FL 33004