

ANDIAMO — NEPTUNUS



Судостроитель: NEPTUNUS

Год постройки: 2004

Модель: Крейсер

Цена: **ЦЕНА ЯХТЫ ПО ЗАПРОСУ**

Местонахождение: United States

Длина общая: 62' 0" (18.90m)

Ширина: 16' 7" (5.05m)

Мин. осадка: 5' 0" (1.52m)

Макс. осадка: 5' 2" (1.57m)

Крейс. скорость: 26 Kts. (30 MPH)

Макс. скорость: 31 Kts. (36 MPH)

Купить **ANDIAMO — NEPTUNUS** а также выбрать подходящую вам яхту из нашего каталога яхт вам поможет опытный яхтенный брокер Андрей Шестаков. На сегодняшний день компания **Shestakov Yacht Sales Inc.** имеет большое количество яхт в собственном списке продаж, а также тесно сотрудничает со всеми крупными яхтенными производителями по всему миру.

Для того чтобы купить яхту **ANDIAMO — NEPTUNUS** а также проконсультироваться по любому вопросу связанному с покупкой, продажей, чартером яхт позвоните по телефону **+7(918)465-66-44**.

ОГЛАВЛЕНИЕ

ОГЛАВЛЕНИЕ	2
ХАРАКТЕРИСТИКИ	7
Основная информация	7
Размеры	7
Скорость, вместимость и масса	7
Размещение	7
Корпус и палуба	8
Информация о двигателе	8
ПОДРОБНОЕ ОПИСАНИЕ	9
Vessel Walkthrough	9
Salon	9
Galley	10
Dining Settee	11
Lower Station	12
Companionway	12
Settee Area	13
Master Suite	13
Master Head	14
Office	14
Guest Head/Day Head	16
VIP Cabin	16
Forward Deck	17
Aft Deck	18
Flybridge Layout	19
Flybridge Equipment	20
Flybridge Navigation Equipment	21
Hardtop Equipment	22
Engine Room	23

Lazarette Equipment	24
Electrical	25
Construction Details	26
Remarks	27
Exclusions	27
Disclaimer	27
Исключения	28
Отказ от ответственности	28
ФОТОГРАФИИ	29
Salon Looking Forward	29
Salon Looking Starboard	29
Salon Looking Port	29
TV Up	29
Salon Looking Aft to Starboard	29
Salon Looking Aft to Port	29
Galley Looking Forward	30
Galley Looking to Starboard	30
Galley Island	30
Galley Looking Aft	30
Galley Looking Forward	30
Galley Looking Port	30
Hidden Lower Helm Equipment	31
Galley Dining Settee	31
Salon SSB & Bilge Alarm	31
Salon VHF & Raymarine	31
Companionway Looking Down	32
Salon Plotter Screen	32
Companionway Looking Forward	32
Companion Settee	32

Settee Being Converted	32
Companionway Berths 6'3" & 6'4"	32
Forward Companionway	33
Bosch Dryer	33
Bosch Washer	33
Master Looking Aft	33
Master Looking to Port	33
Master Looking to Starboard	33
Master Vanity	34
Master Looking Forward	34
Master Head	34
Master Shower	34
Office Looking Starboard	34
Office	34
Office Looking Forward	35
Office	35
Guest Head	35
VIP Looking Forward	35
VIP Looking to Starboard	35
VIP Looking to Port	35
VIP Looking Aft	36
Foredeck	36
Anchor Detail	36
Foredeck	36
All S/S Anchor Chain	37
Oversized Windlass Detail	37
Spacious Side Decks	37
Aft Deck Profile	37
Aft Deck Seating	38

Aft Deck to Port	38
Aft Deck Grill	38
Aft Deck Ice maker	38
EZ Bridge Access Steps	38
Aft Deck Controls	38
Swim Platform	39
Flybridge Looking Forward	39
Flybridge Looking Aft	39
Flybridge Aft Seat	39
Flybridge Steps	39
Flybridge Forward Seating	39
Flybridge Bar	40
Flybridge Seating	40
Flybridge Storage	40
Helm	40
Helm Detail	40
Helm Detail	40
Flybridge Starboard Side Controls	41
Flybridge Portside Nav Station	41
Flybridge Portside Controls	41
Coach Roof Equipment Aft	41
Coach Roof Equipment Forward	41
Engine Room Looking Forward	41
Port Engine	42
Starboard Engine	42
Gen	42
AC	42
Hours	42
Lazarette Looking Forward	42

Lazarette Looking Starboard	43
Lazarette Looking Port	43
Boost Transformer	43
Home Port Near Michigan	43
Alternate Profile	43
Alternate Profile	43
КОНТАКТЫ	44
Контактная информация	44
Телефоны	44
Время работы	44
Адрес	44

ХАРАКТЕРИСТИКИ

Основная информация

Тип судна: Крейсер

Модельный год: 2004

Год постройки: 2004

Страна: United States

Верх: Hardtop

Открытая палуба мостика: Да

Размеры

Длина общая: 62' 0" (18.90m)

Длина по ватерлинии: 58' 0" (17.68m)

Длина палубы: 62' 0" (18.90m)

Ширина: 16' 7" (5.05m)

Мин. осадка: 5' 0" (1.52m)

Макс. осадка: 5' 2" (1.57m)

Длина привального бруса: 65' 4"
(19.91m)

Скорость, вместимость и масса

Крейс. скорость: 26 Kts. (30 MPH)

Дальность на крейсерской скорости:
325

Макс. скорость: 31 Kts. (36 MPH)

Водоизмещение: 70000 Pounds

Вместимость воды: 250 Gallons

Вместимость сточного бака: 110 Gallons

Объем топливного бака: 1122 Gallons

Размещение

Всего кают: 3

Всего коек: 3

Спальные места: 6

Всего ком. состава: 2

Корпус и палуба

Материал корпуса: Fiberglass

Материал палубы: Fiberglass

Комплектация корпуса: Modified Deep Vee

Цвет корпуса: White

Дизайнер корпуса: Tony Castro

Информация о двигателе

Двигатели: 2

Производитель: Caterpillar

Модель: C-18

Тип двигателя: Inboard

Тип топлива: Diesel

ПОДРОБНОЕ ОПИСАНИЕ

Vessel Walkthrough

ANDIAMO is a Euro Style Sedan Motoryacht. Her interior is graced with a light stained cherry joinery that shows beautifully. ANDIAMO has a custom layout including a functional Office Area below decks.

Boarding ANDIAMO is either from the swim platform and up the port or starboard steps or from the Aft Deck port or starboard.

ANDIAMO has a comfortable Aft Deck with built in seating, same level Salon with a raised Galley and a Dinette Area with a small Lower Station opening the space up to a larger Galley area. Below decks are two staterooms and two full Heads plus an Office. A custom settee can sleep two when necessary. The Master Stateroom is amidships taking advantage of the widest and quietest part of the yacht. Forward is the VIP Cabin with the Office Area between the VIP and the Master. The Engine Room is aft and accessed via a hatch in the Aft Deck sole. Furthest aft is spacious Lazarette. The Flybridge deck has easy access via stairs and the optional Neptunus hardtop, four side enclosure and the signature open air Sun Lounge ahead of the Helm.

Salon

The Salon is entered via a curved "Trend" stainless steel sliding door with a sliding insect screen and full drapes. The very open and spacious Salon is fully carpeted except for a small bamboo entry area aft.

Immediately to starboard is a crème colored L shaped settee with full storage below. Built in cherry end tables are at either end of the sofa. There are two drawers in the aft end table and two cabinets at the forward one. Lying in front of the sofa are two storage hassaks with a surprising amount of storage below.

Forward in the outboard corner are two cabinet doors presently used to store the yacht's copious equipment manuals. A cherry corner shelf is provided by the curved corner of the settee.

Above the sofa is the signature two level Salon side windows with full drapes separated by an attractive upholstered panel. A sconce light and two Boston Aquastics speakers flank the windows.

On the portside immediately upon entering is another storage hassak. Outboard are five cabinet doors that offer bar storage. Aft is a hinged panel that opens to reveal a stainless steel bar sink set upon a Corian countertop.

Behind the center bar storage is a popup Sharp 30" LCD TV that disappears when not in use.

The next two cabinets forward make up the entertainment electronics locker. Included in this area is a Yamaha five disc DVD player, a Yamaha Natural Sound AV receiver, an Onyko two channel amplifier, a JVC Super VHF tape player, the receiver for the Sharp TV, a Glomex gain adjustment for the Terrestrial TV antenna, the Sea Tel Sat TV control panel and the A/B switch for cable/Sat TV selection.

Next forward is a wine storage locker for eight bottles of wine and a drawer for barware. The Salon windows, drapes and sconces match those to starboard.

One step up are two more curved cabinet doors for storage.

Also in the Salon is an oval ceiling treatment with two LED mini spots over the hassaks. There are also seven additional LED mini spots overhead, two center channel speakers and digital AC controls.

Galley

The Galley area of ANDIAMO is greatly expanded by taking the usual Lower Helm and shrinking it to its bare necessities. Certainly a big plus as the Galley is used more frequently than the lower controls.

This area is two steps up from the Salon but very open to the Salon with no obstructions. A small center island is a very useful addition.

Equipment and features of this area are:

Bamboo planked sole

Three level Corian countertops

Panasonic Dimension 4 Genius microwave/convection/broiler behind a cherry door

(2) Sub Zero 700 BR refrigerator drawers w/cherry drawer fronts

(2) Sub Zero 700 BF freezer drawers w/cherry drawer fronts

Sub Zero refrigerator behind a cherry door

Pullout trash container behind a cherry door

GE Profile stainless steel 4 burner Ceran cooktop w/center warming zone & a full size oven below (drop in range)

Miele stainless steel dishwasher w/a cherry front

(2) Under counter Corian sinks

Grohe single lever faucet w/a removable spray handle

(10) Cherry cabinet doors

(10) Cherry drawers incl. dish storage

Exhaust fan

(17) LED mini spots w/directional fixtures

Central Vacuum outlet in cabinet under the sink

Dining Settee

Forward and to port in the Dining Area is the raised Dining Settee to seat five adults. There is excellent all around visibility from this area. The seat backs are upholstered and the seat

bottoms Ultra Leather.

The table is a highly varnished Sepeeli burlwood with a cherry trim set upon twin cherry table bases.

Side windows of the Galley and Dinette Area have drapes while the large seven panel windshield can be shaded from the sun by the exterior applied black Textulene windshield cover or a black Stamoid storage cover.

Lower Station

The Lower Station is mostly hidden from view when not in use. Under a hinged cherry cover are CAT electronic engine controls, engine start/stop buttons, three windshield wiper/washer controls, a DC accessory outlet, thruster controls, remote auto pilot control and the bow and stern thruster controls.

Located in the chart flat above is a 12" LCD Nauticomp monitor for GPS/TV, a Raymarine ST 60 multi depth/speed/log, Icom M 602 VHF and an Icom M 710 SSB remote, three LCD bilge pump counters and the high water alarm panel for the bilge pump system. Also located in this area are windshield defogger vents and a panel to access the upper level forward AC air handler.

Companionway

To the port side of the Galley starting further aft than the newer models is a Companionway worthy of a larger yacht.

The seven curved steps each with an LCD step light lead to a landing with the yacht's electrical panel outboard. At the base of the steps one can go aft and down one step to the Master or forward and up one step to the Custom Office to starboard or to port into the open Settee/Double Berth Area. Above is a much appreciated skylight flooding the area with natural light.

Up one more step is the Laundry Center with a custom Bosch Axxis washer and separate dryer behind four cherry doors.

Furthest forward is the entrance to the en suite VIP Cabin.

Settee Area

The settee on the portside of the Open Companionway at first appears to be just a comfortable spot for two people to sit and read. Within a few minutes time utilizing hidden compartments and cushions this area converts to sleep two in an upper 6'3" berth and a lower 6'4" berth. Above are four LED lights in directional fixtures. Above the upper berth is an opening stainless steel porthole with a screen and Roman shades as needed. Below the lower berth is additional storage. A hatch in the sole of this area leads to both house water pumps and the yacht's shower sump.

Master Suite

The Master Suite is entered via an arched door from the forward end of the suite. Centerline there is a tapered queen size berth with rope lighting and two storage drawers below. The upholstered headboard is affixed to a four panel beveled mirror aft of the berth. There is a small brass sconce lamp port and starboard as well as a reading light in the soffit above for each side of the berth. Each side also has a built in nightstand with one large drawer. To starboard is a single hanging locker with cedar lining and auto light with a cherry countertop above. Next forward is a bank of six drawers with a cherry countertop above. Above is an oversize opening hull side port light with Roman shades.

Next forward is a access to the large Master Head.

To port starting forward is a built in Sharp Aquos 20" LCD TV above and a small vanity with stool, drawer and dressing mirror below. Next aft are two cherry cabinet doors for storage, a video selector switch allowing the Salon's DVD player to show on the Master TV.

Next aft are three cherry drawers followed by another 3/4 height single door cedar lined hanging locker with auto light. Also in this area is a Fireboy CO monitor and an opening porthole with

Roman shades to match that on the starboard side.

Also in this cabin is a soffit type AC delivery to evenly distribute the AC, a decorative ceiling treatment over the berth with three LED lights with directional fixtures, four additional Led lights, stereo speakers with volume control under the berth, digital AC controls, a Raymarine multi read out ST 70 and a house battery shutoff switch.

Master Head

Accessed only from the Master Suite is the Master Head with bow front cherry vanity with a cabinet below and an under mount sink with two tone Grohe single lever faucet above. The countertop is off white Corian. There are four mirrored medicine cabinets above, with an opening oval porthole behind a pleated shade.

The toilet is a custom Head Hunter model. The sole is marble tile to compliment the countertop and the overhead is mirrored.

The stall shower has a clear acrylic door, a seat, a hand held or wall mountable shower fixture, a light, a soap/shampoo/conditioner dispenser and an exhaust fan.

Also in the Head are three LED light fixtures.

Office

The Office of ANDIAMO, built during original construction, occupies the area that would normally be the Third Stateroom. This area occupies the same basic space and could be easily converted to its original design.

Entry is from the aft inboard corner via an arched entry door. Directly outboard is a cedar lined hanging locker with auto light converted to have five cedar shelves plus a central vacuum outlet.

The Sapeeli burlwood topped L shaped desk is next. Below the desk are four full size file drawers, the cabinet for the yacht's CPU's and printer on pullout shelves and three additional storage drawers.

Hatches in the sole reveal great amount of storage space not found when this area is arranged as a sleeping cabin.

Immediately above the desk is an impressive array of equipment including:

Dell LCD computer monitor

Icom M 710 SSB control head

Icom M 602 VHF w/DSC

Raymarine ST 60 Tri data for depth/speed/log

Raymarine ST 60 apparent wind indicator

Sea Tel Wave Call control panel

Xantrex Prosine charger/inverter control

Xantrex Link 20 battery voltage indicator

Village Marine Tech digital water maker control panel

Marine Air digital AC control

12 Volt accessory outlet

Stereo speaker volume control

Above a cherry shelf are two opening stainless steel windows with screens covered by Roman shades as needed.

Nine cherry cabinet doors are above the portholes offering abundant storage options.

Guest Head/Day Head

The Portside Forward Head serves both the VIP and the Guest Settee and as such has a door into the VIP and the Centerline Companionway allowing it to be the Day Head as well.

The cherry vanity has a bow front, under mount sink and a two tone Grohe faucet above on a blue Corian countertop. There is one cabinet door below and three mirrored cabinets above.

The toilet is a custom Head Hunter model. The stall shower has a clear acrylic door, a light and a handheld or wall mountable shower fixture and a soap/shampoo/conditioner dispenser. Also in this Head is a marble tile sole, an opening screen stainless steel port light with a Hunter Douglas Duette shades. Above are three LED lights in directional fixtures.

VIP Cabin

All the way forward is the VIP Cabin with a centerline queen berth, upholstered headboard over a mirrored panel and two overhead reading lights.

There are two large drawers at the foot of the berth. To both port and starboard are built in cherry countertops that serve as nightstands. Above on each side are oval stainless steel opening portholes with screens and full drapes. Further above are four cherry cabinets on each side.

Aft to port is a double door cedar lined hanging locker followed by the entry door to the Forward Head.

Facing forward on the starboard side is a built in 15" Sharp LCD TV and a cabinet with storage within. Below a large mirrored panel is a Corian topped vanity with a single drawer and a stool to serve as a vanity.

The starboard side has a two door cedar lined hanging locker with an auto light and a Direct TV receiver within.

Also in this cabin are digital AC controls, a CO detector, five overhead LED mini spots, two stereo speakers, an overhead Bomar escape hatch/skylight with a retractable screen and shade, rope lighting behind the valance and under the berth and arched entry door to the cabin. Access to the oversized boat's thruster and batteries are below.

Forward Deck

Heavy Duty stainless steel bow rails w/double rails

Stainless steel anchor pulpit w/bow roller

88 lb. Delta stainless steel anchor

Upgraded Muir 4500 24 volt windlass w/225' of 1/2" stainless steel high tensile chain (This was a major upgrade as the owners like to anchor.)

Up & down foot switches for windlass

Wired remote for windlass

Round Bomar hatch to access large chain locker

Outlet for high pressure wash down system

Freshwater wash down on bow in bow locker

Heavy duty rub rail w/stainless steel insert

Round Bomar VIP Cabin deck hatch

Dual spring line cleats

International navigation lights

Air horn

Dual deck fills for fuel port & starboard

Stainless steel burgee pole

Bow sun pad area (no cushions) & built in drink holders

Stainless steel hand rails at bow cushion area

Black Textulene wrap around windshield cover & cover for cabin side windows

Black Stamoid wrap around windshield cover & cover for cabin side windows

Frameless cabin side windows

Stainless steel sliding boarding gates port & starboard

(3) Heavy Duty windshield wipers & washers

Aft Deck

Teak sole over fiberglass

Covered stern cleats w/fairleads w/hinged covers more heavily built than sisterships

Built in fiberglass stairs (7) to Flybridge w/teak treads

(2) Hinged stainless steel gates to swim platform

Covered Aft Deck

(3) Stainless steel DC lights in Aft Deck overhead w/double LED fixtures

Built in Aft Deck seating for four

Fiberglass table w/folding center section w/twin table bases

Wet bar w/stainless steel sink to port w/storage cabinet below

Gaggenau electric stovetop under hinged fiberglass top w/weather cover

Easy access to spacious Lazarette below

LED exterior courtesy lights on all steps (19 total)

TV inlet w/ cord

Telephone inlet w/cord

Neptunus swim platform w/hydraulic mechanism & removable tender chocks upgraded to 1200 lb. capacity

Huge full beam Lazarette w/5' of headroom, accessed via center section of aft seat

(2) Clarion stereo speakers w/tweeters

Hand rails at port & starboard side steps to Foredeck & rail at Flybridge steps

Teak steps from Aft Deck to swim platform w/hinged stainless steel safety gates

Jabsco pressure water inlet w/pressure regulator

Deck waste pump out plate

Large hatch to Engine Room on gas shocks

Hot & cold shower starboard side

Custom fresh & salt water spigots on portside

Raritan icemaker under Flybridge steps

(2) AC underwater lights

(2) Stern mounted cleats

Clarion stereo remote

Curved stainless steel trimmed "Trend" Salon entry door

(2) Aft facing cameras for stern docking/security

Port & starboard boarding ladder receptacles

Starboard side custom Aft Deck controls w/CAT electronic controls, bow & stern thruster controls, auto pilot remote & start/stop switches all under a hinged fiberglass cover

Flybridge Layout

The Bridge is surprisingly roomy with large U shaped seating is on the aft portion of the Flybridge to seat six to eight with a kidney shaped fiberglass table centered between the seating. Next forward is a large fiberglass countertop with a hinged top storage locker into an extra deep storage all covered with vinyl cushions for seating. This area cleverly occupies what was once a single person (!) hot tub on older 62' Neptunus models.

Forward on the portside is an upholstered Stidd double helm seat with wing controls and a backup radar/plotter for the co pilot. A remote Icom VHF and SSB and main stereo control head are also in this area.

To starboard is the full Upper Helm with a double Stidd helm seat followed by a covered bar unit

with a Miele electric BBQ grill, a stainless steel sink and a Norcold drink refrigerator. There is also a large and a small storage cabinet below and a Corian countertop above.

Forward of the Helm is an open sun lounge with exterior sun cushions and a Venturi windscreen. The remainder of the Flybridge is under the signature Neptunus hardtop with a four side enclosure.

Flybridge Equipment

(4) Access panels for storage in the Helm Area

3 Side polycarbonate (EZ2CY style) enclosure

Fourth side (aft) clear vinyl enclosure

(6) Overhead DC stainless steel trimmed lights w/double LED elements

(4) Clarion overhead stereo speakers w/separate tweeters

(2) Drink holders at helm

Black Stamoid helm cover

Black Stamoid seat covers

Black Stamoid U shaped seating cover

Stainless steel flag staff

Clarion XMD3 AM/FM/CD Stereo for Flybridge, Sirius ready

110V GFCI outlet

Winslow 8 person life raft mounted in cradle

Special partial bridge panel to close off the area just aft of the Helm to contain the AC to the forward Flybridge area

(2) Aft facing floodlights from Bridge hardtop

(2) Heavy Duty folding footrests at helm seat

Full Bridge carpet w/bound edges

Tempered glass windshield w/wiper in front of Helm & co pilot seats

Flybridge Navigation Equipment

(2) CAT LCD gauge panels for main engines

CAT electronic clutch & throttle controls

Simrad CR 54 15" dual range monitor for 72 mile radar & plotter

Stealth.com 17" color monitor for computer based plotter

Sirius SAT weather receiver

Simrad AP20 autopilot

Raymarine ST60 multi depth/speed/log gauge

Raymarine ST60 digital wind indicator

(2) Electric fuel gauges

ACR Point Pad searchlight controls

CAT back up panel for gears & throttle

Side Power bow & stern thruster controls

Bennett trim tab controls

Sea Star Teleflex helm

Dino tilting wood steering wheel

Fireboy controls

Windlass controls

(2) Windshield wiper controls

Icom M602 VHF w/DSC

Larger than standard Sea Tel dome for larger coverage area

Portside co pilot area includes the following gear:

Icom M 710 head unit for SSB

Raymarine RL80C Pathfinder 24 mile radar/plotter

Clarion XMD3 AM/FM/CD/Sat ready radio

Bow & stern thruster controls

Icom Command mic for VHF

CAT electronic engine controls

Start/stop batteries for main engines

(2) Drink holders

Hardtop Equipment

Sea Tel Wave Call 3000 min sat dome

RCL 100 searchlight

Hailer horn

6' 72 mile Simrad radar scanner

Hinged Sat TVmast

24 Mile Raymarine Raydome

Glomex Terrestrial TV antenna

Raymarine wind speed indicator

Cell phone range booster

(3) VHF antennas

SSB antenna

(2) GPS antennas

AM Antenna

Engine Room

Anti vibration mounts for engines & generators

SP 285 Sidepower 48 volt DC electric bow thruster

SP 285 Sidepower 48 volt DC electric stern thruster

(4) Automatic/manual bilge pumps w/"Ultra" bilge pump switches

(2) Grundfos 115 volt house water pumps

Space Saver 30 Gallon hot water heater

(5) Fluorescent & LED Engine Room lights

110V GFCI outlet

(2) 110V Engine Room blowers

FRP flooring between engines

Macerator pump for waste system w/timer

2.5" Aquamet 22 stainless steel shafts

Dripless shaft seals w/spare seals mounted

Site tubes for both fuel tanks w/momentary shutoff valves for safety

2" Heavy duty insulation material covered w/white aluminum perforated paneling

Oil Xchanger Oil change system for engines, transmission & generator

34 lb. Fireboy automatic fire suppression system (FE 241)

Air filters on Engine Room air intakes

Teleflex power steering system

Marine Air 72,000 BTU chilled water air conditioning w/(5) air handlers & (3) compressors

Circulation pump for AC chilled water pump

Racor 1000 MA fuel filters for main engines

(1) Racor 500 filter for generator

Shaft bonding brushes

6 Step stainless steel & teak ladder to Engine Room from Aft Deck

(3) Coolant recovery bottles for cooling systems

Sea Star hydraulic power steering pumps installed on both engines for redundancy

ZF 550A Transmissions w/1.97:1 reduction

Airsep crankcase ventilation system

426 Gallon aluminum forward fuel tank

696 Gallon aluminum aft fuel tank

Oversize Groco sea strainer & sea valves for main engines

5 Blade main props - Just tuned and balanced Sept 2012

(2) Aluminum baffled water tank

(1) Aluminum baffled waste tank

Fuel transfer pump w/timer

Broan central vacuum

Wema water tank gauge at main electrical panel

Wema waste tank gauge at main electrical panel

Remote generator start/stop controls in Engine Room

Hard wrapped exhaust system

Tool shelf on top of AC compressors

(2) Oil filled engine oil pressure gauges in Engine Room

(2) Engine Room cameras

Four step teak & stainless steel swim or side boarding ladder

Lazarette Equipment

Six step stainless steel & teak tread entry ladder

Vinyl flooring on sole

(2) Glendinning cable master systems 220V 50 amp w/remotes

Custom Boji water filtration/softener system

(2) Large mufflers

Timer for holding tank macerator pump

Incandescent 12 volt DC lighting

Fluorescent 120 volt AC lighting

(2) 4 Blade spare props chocked on rack storage

3000 PSI Power washer plumbed to outlets on Flybridge, anchor locker & Lazarette w/a 100' hose on a reel

Hydraulic tender lift specially adapted at time of build to accept a 1200 lb. tender

Village Marine 800 GPD water maker

Custom stainless storage racks for parts

Custom (4) breaker 220 volt accessory panel in Lazarette

Electrical

110V/220V AC system

12V/24V DC system

21 KW CAT generator in sound shield w/1195 hours

(2) Banks of 12 volt gel cell batteries separated by blocking diodes as follows:

(4) 8D's (220 ah each, wired in parallel) for house 12V

(2) 4D's (180 ah each, wired in series) for engine starting 24V

(4) Group 31 for bow thruster & windlass system

DC Digital voltmeter

DC Digital amp meter

AC Digital voltmeter

AC Digital amp meter

(20) Breaker protected 110 volt AC circuits

(8) Breaker protected 220 volt AC circuits

(42) Breaker protected DC circuits

Charles C Charger battery charger for engines 24V, 30 amp

Iota DL S24 250 Battery charger system 12V 90 amp

Centaur 200 amp 12 volt charger for house batteries

(2) 50 amp Glendinning 220V 50 amp cord reels w/85' of cord each, each w/remote controls

Generator "on" indicator light at Helm

(3) Battery shutoff switches

(2) Newmar GI 50 galvanic isolators in Lazarette

Port engine alternator 85 amps, 28V

Starboard engine alternator 135 amps, 14V

(3) Gang centrally located GFCI's at main bus

(2) 15 KVA Rex isolation transformers in Lazarette w/optional boost setting

Full generator gauge package at electrical panel

Ship's schematic panel above main electrical panel for Nav lights/DC/AC/shore/generator LED indicator lights

(4) Group 31 batteries for bow thruster 48 volt system

(4) Group 31 batteries for stern thruster 48 volt system

(2) Battery switches & fuses for stern thruster in Lazarette

Construction Details

The boat is a composite construction using Kevlar Hybrid materials for superior strength and puncture resistance. Six longitudinal foam stringers and 20 transverse foam stringers enclosed with stitched woven roving, reinforce the entire hull bottom. The hull sides are cored. The

engine stringers run from stern to bow with steel top plates for engine mounting. The Deep Vee Hull has been designed to ensure a vessel with excellent sea keeping qualities. Special attention has been given to a ratio between installed power, speed and fuel consumption.

Remarks

ANDIAMO represents a very special 62 Neptunus. First she was built by the current owners as a third Neptunus they owned.

Since being built 93% of the months since her launch she has been in fresh water. Most of those months have been in a heated under cover boathouse outside Detroit, MI.

Of special note is her functional Office and a unique settee in the Companionway to sleep two when needed. Her Galley is enlarged from the standard 62' layout by having a very compact hidden Lower Helm. Her bow and stern thrusters are powered via 48 volts DC for maximum thrust.

September of 2012 the bottom paint and primer were removed and replaced with five coats of Interlux Inter Protect barrier coat and two coats of hard bottom paint.

ANDIAMO sparkles and deserves your closest inspection.

Exclusions

While every effort was made to list all pertinent included equipment aboard ANDIAMO, there are some personal belongings aboard. Prospective purchasers should assume any item not specifically mentioned herein will not convey at closing.

Disclaimer

The Company offers the details of this vessel in good faith but cannot guarantee or warrant the accuracy of this information nor warrant the condition of the vessel. A buyer should instruct his

agents, or his surveyors, to investigate such details as the buyer desires validated. This vessel is offered subject to prior sale, price change, or withdrawal without notice.

Исключения

При продаже яхты исключаются личные вещи владельца.

Отказ от ответственности

Компания предоставляет описание судна или яхты добросовестно, но не может гарантировать точность этой информации, а также не ручается за техническое состояние. Покупатель должен проинструктировать своих агентов или оценщиков исследовать представленную информацию более подробно, по собственному желанию. Продажа судна или яхты, изменение цены или снятие с продажи будет происходить без предварительного уведомления.

ФОТОГРАФИИ

Salon Looking Forward



Salon Looking Starboard



Salon Looking Port



TV Up



Salon Looking Aft to Starboard



Salon Looking Aft to Port



Galley Looking Forward



Galley Looking to Starboard



Galley Island



Galley Looking Aft



Galley Looking Forward



Galley Looking Port



Galley Dining Settee



Hidden Lower Helm Equipment



Salon SSB & Bilge Alarm



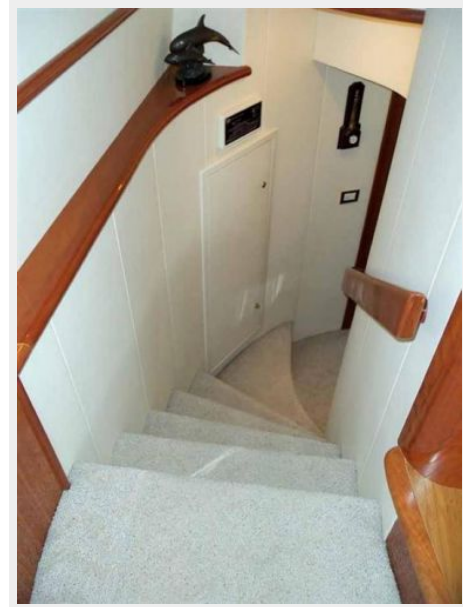
Salon VHF & Raymarine



Salon Plotter Screen



Companionway Looking Down



Companionway Looking Forward



Companion Settee



Settee Being Converted



Companionway Berths 6'3" & 6'4"



Forward Companionway



Bosch Dryer



Bosch Washer



Master Looking Aft



Master Looking to Port



Master Looking to Starboard



Master Looking Forward



Master Vanity



Master Head



Master Shower



Office Looking Starboard



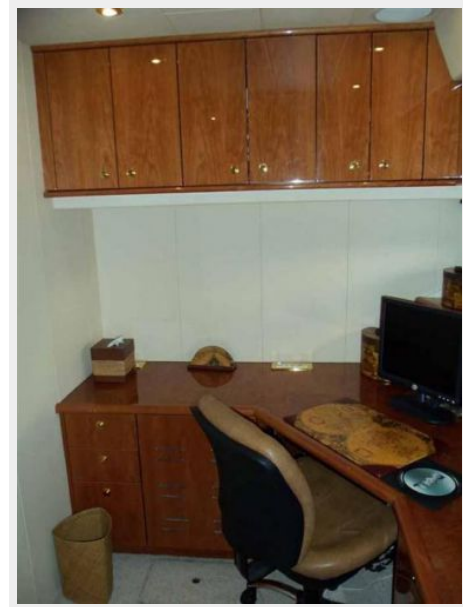
Office



Office



Office Looking Forward



Guest Head



VIP Looking Forward



VIP Looking to Starboard



VIP Looking to Port



VIP Looking Aft



Foredeck



Anchor Detail



Foredeck



Oversized Windlass Detail



All S/S Anchor Chain



Spacious Side Decks



Aft Deck Profile



Aft Deck Seating



Aft Deck to Port



Aft Deck Grill



Aft Deck Ice maker



EZ Bridge Access Steps



Aft Deck Controls



Swim Platform



Flybridge Looking Forward



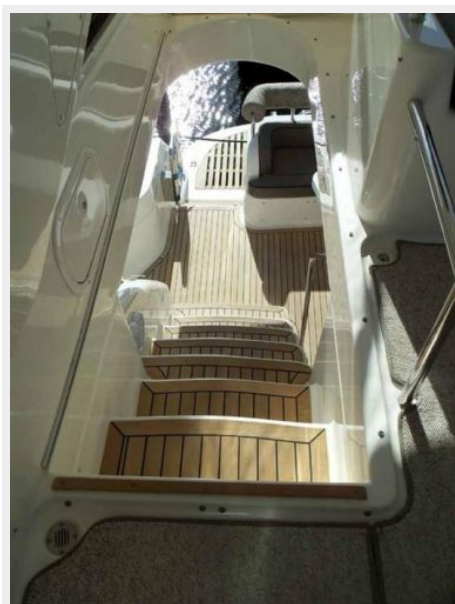
Flybridge Looking Aft



Flybridge Aft Seat



Flybridge Steps



Flybridge Forward Seating



Flybridge Bar



Flybridge Seating



Flybridge Storage



Helm



Helm Detail



Helm Detail



Flybridge Starboard Side Controls



Flybridge Portside Nav Station



Flybridge Portside Controls



Coach Roof Equipment Aft



Coach Roof Equipment Forward



Engine Room Looking Forward



Port Engine



Starboard Engine



Gen



AC



Hours



Lazarette Looking Forward



Lazarette Looking Starboard



Lazarette Looking Port



Boost Transformer



Home Port Near Michigan



Alternate Profile



Alternate Profile



КОНТАКТЫ

Андрей Шестаков (Andrey Shestakov) – ведущий яхтенный брокер отдела продаж яхт и судов компании Shestakov Yacht Sales Inc. Официальный представитель Shestakov Yacht Sales Inc. для русскоговорящих клиентов в центральном офисе компании в Майами/Форт Лодердейл/Флорида/США.

Контактная информация

Email: andrey@shestakovyachtsales.com

Web: shestakovyachtsales.com

Телефоны

Краснодарский край: **+7(918)465-66-44**

США, Майами, Флорида: **+1(954)274-4435**

Время работы

Понедельник – Суббота: **9:00 - 21:00**
EDT

Воскресенье: **Закрето**

Адрес



Harbour Towne Marina, 850 NE 3rd St,
STE 213, Dania, FL 33004