

## NAMASTE — TAMSEN YACHTS



**Судостроитель:** TAMSEN YACHTS

**Год постройки:** 2008

**Модель:** Моторная яхта

**Цена:** **ЦЕНА ЯХТЫ ПО ЗАПРОСУ**

**Местонахождение:** Italy

**Длина общая:** 131' 3" (40.00m)

**Ширина:** 28' 3" (8.60m)

**Макс. осадка:** 5' 5" (1.65m)

**Крейс. скорость:** 14 Kts. (16 MPH)

**Макс. скорость:** 16 Kts. (18 MPH)

Купить **NAMASTE — TAMSEN YACHTS** а также выбрать подходящую вам яхту из нашего каталога яхт вам поможет опытный яхтенный брокер Андрей Шестаков. На сегодняшний день компания **Shestakov Yacht Sales Inc.** имеет большое количество яхт в собственном списке продаж, а также тесно сотрудничает со всеми крупными яхтенными производителями по всему миру.

Для того чтобы купить яхту **NAMASTE — TAMSEN YACHTS** а также проконсультироваться по любому вопросу связанному с покупкой, продажей, чартером яхт позвоните по телефону **+7(918)465-66-44**.

# ОГЛАВЛЕНИЕ

---

ОГЛАВЛЕНИЕ	2
ХАРАКТЕРИСТИКИ	4
Обзор	4
Основная информация	4
Размеры	4
Скорость, вместимость и масса	4
Размещение	5
Корпус и палуба	5
Информация о двигателе	5
ПОДРОБНОЕ ОПИСАНИЕ	6
Construction	6
Accommodation	6
Machinery	6
Ancillary Machinery	7
Electrical Equipment	7
Audio & Visual Equipment	8
Deck Equipment	8
Safety & Fire Protection	9
Communications Equipment	10
Navigation Equipment	10
Domestic Equipment	10
Tenders	11
Sport, Leisure & Fitness	11
General Description	12
Recent Works	13
Исключения	15
Отказ от ответственности	15
ФОТОГРАФИИ	16

---

Main Saloon	16
Main Saloon	16
Upper Deck Dining Saloon	16
Owner's Stateroom	16
Master Bathroom	16
Guest Stateroom	16
Hallway	17
Study	17
Upper Deck	17
Aft Deck	17
Ariel Shot	17
Foredeck	17
Namaste GA plan	18
<b>КОНТАКТЫ</b>	<b>19</b>
Контактная информация	19
Телефоны	19
Время работы	19
Адрес	19

# ХАРАКТЕРИСТИКИ

## Обзор

Launched in 2008, this semi-custom tri-deck motor yacht is a unique concept, combining innovative technology and optimal functionality. Designed to blur the edges between indoor and outdoor living, the keywords of NAMASTE's concept are flexibility and versatility. Sliding doors and retractable ceilings let the outside in, creating al fresco spaces and unimpeded ocean views throughout the yacht. 5-Year RINA Survey successfully completed in December 2013.

## Основная информация

**Тип судна:** Моторная яхта

**Подкатегория:** Semi-Displacement

**Модельный год:** 2008

**Год постройки:** 2008

**Страна:** Italy

## Размеры

**Длина общая:** 131' 3" (40.00m)

**Ширина:** 28' 3" (8.60m)

**Макс. осадка:** 5' 5" (1.65m)

## Скорость, вместимость и масса

**Крейс. скорость:** 14 Kts. (16 MPH)

**Дальность на крейсерской скорости:**  
700

**Макс. скорость:** 16 Kts. (18 MPH)

**Чистый вес:** 358 Pounds

**Вместимость воды:** 1320.86026 Gallons

**Объем топливного бака:** 7925.16156  
Gallons

## Размещение

---

**Всего кают:** 5

**Спальные места:** 12

**Каюта капитана:** Да

**Койки экипажа:** 7

## Корпус и палуба

---

**Материал корпуса:** GRP

**Материал палубы:** Teak

**Комплектация корпуса:** Semi-Displacement

**Дизайнер экстерьера:** Tamsen Yachts

**Дизайнер интерьера:** Julia Tamsen, Loro Piana

## Информация о двигателе

---

**Двигатели:** 2

**Производитель:** MTU

**Модель:** 16V2000M93CR

**Тип топлива:** Diesel

# ПОДРОБНОЕ ОПИСАНИЕ

## Construction

**Hull** GRP

**Superstructure** GRP

**Deck** Teak

**Built in** Turkey

**Interior Designer** Julia Tamsen, Loro Piana

**Ext. Designer** Tamsen Yachts

**Naval Architect** Ned Ship Group

## Accommodation

**Owner** Full-width Owner's suite on the main deck featuring a king-size bed, luxurious bathroom with tub & shower, walk-in closets and a multi-functional office.

**Guest** On the lower deck are four guest cabins, all with double beds and ensuite bathrooms. Two of the guest cabins have an additional single bed. The lower lobby is equipped with a self-service bar for guests' convenience.

**Crew** Accommodation for 7 crew plus the Captain.

## Machinery

**Main Engines:** 2 x 2400hp 16v2000M93CR

**Engine Hours:** 1367 hours @ 11/12/12 **Gear Box:** ZF36009 Max

Speed: 16 knots Range at Max Speed: 500 nautical miles Cruising Speed:  
 14 knots Range at Cruising Speed: 700 nautical miles Economical Speed:  
 12 knots Range at Economical Speed: 833 nautical miles

## Ancillary Machinery

---

<b>Stabilizers</b>	Wesmar with Gyro Controller (CPS1000)
<b>Water Makers</b>	SLCE SD5 x 2 (4800 Litres a day)
<b>Air Conditioning/heating</b>	Webasto Chilled Water A/C System & Fresh air System
<b>Bow Thruster</b>	Wesmar (bow and stern thrusters) 100HP each.
<b>Fuel Filtration</b>	2 x ALFA LAVAL & RACER Pre filtration Duplex Filter System.
<b>Sewage System</b>	Hamann
<b>Bilge System</b>	1 x Fixed main dedicated bilge pump 1 x Portable diesel bilge pump
<b>Propellers</b>	2 x 5 Blade - Bronze

## Electrical Equipment

---

<b>Electrical Power</b>	220 / 380V 50Hz. A/L 24V DC
<b>Shore Power</b>	220 / 380V 50Hz 266 amps 3 phase
<b>Generators</b>	2 x 90KW KILOPAK GENSET
<b>Generator Hours (Dec 2012) Starboard</b>	2436 Port 2121

---

## Audio & Visual Equipment

---

2 x 1 TB Lantic Entertainment System / Puresonic Surround System

Main Salon: 46 inch Sony Bravia TV

30inch TV NAD - iPod Docks.

Sky Lounge: 42 inch Samsung TV,

PS3 & Wii & Games, iPod Dock.

Master Cabin: 40 inch Sony Bravia TV (moterised lift cabinet), iPod Dock.

Master Office: 37 inch Sony Bravia TV, iPod Dock

Guest Cabins: 24 inch DELL TV, iPod Dock in each cabin.

Aft Deck: 30 inch NAD TV.

Sky TV

---

## Deck Equipment

---

**Deck Equipment** 2 x muir anchor windlass

**Ground Tackle** 2 x s/steel custom

**Cranes/Davits/Passerelles** 1 x Hydraulic Passerelles

1 x Capstan (Muir) on bow

**Winches**

2 x Muir Winches Aft.



---

## Safety & Fire Protection

---

2 x Viking 25DK Life Rafts

1 x Viking 20DK Life Raft

19 x Ocean Rated PFD's

22 x Immersion suits

### **Safety** 2 x Life Rings with smoke & light

2 x Life rings with 30m line

2 x Floating EPIRBS (GMDSS)

1 x SART

2 x Safety Harness

24 x Dry powder fire extinguishers A,B,C rated (2kg).

2 x Co2 FM 200 Fixed System in Engine Room & Garage.

### **Fire Fighting** Rain Water Sprinkler System in Garage.

Fixed pump with various outlets.

2 x BA Sets & Firemans outfits.

Praxis Alarm and Monitoring system

### **Alarms** Fire Alarms

Heat Alarms

### **Security** CCTV System Integrated into Praxis System

## Communications Equipment

---

2 x Sailor RT5022 VHF DSC

1 x Sailor C45100 MF/HF Control Unit SSB

Sailor Sat C (TT3606-E) Terminal

Fleet 77 Voice / Data

V-SAT System

LRIT

AIS

8 x VHF Radios

WIFI throughout the yacht via VSAT or French mobile system, plus local WIFI when in port.

Internet on TV system via Lantic entertainment system.

3G GSM

Telephone PABX Panasonic with GSM module

## Navigation Equipment

---

2 x Sperry Radar Integrated through Praxis

1 x Anschutz auto pilot

1 x Anschutz gyro compass

Transas (ECDIS)

1 x Magnetic compass

1 x SAAB GPS R4 NAV. System (dGPS)

1 x SAAB AIS R4 NAV. System

1 x Windex Integrated to Praxis

## Domestic Equipment

---

2 x Miele Fridge Freezer

1 x Walk-in Cold Room (Custom)

2 x Miele Dishwashers

### **Galley**

1 x Miele Induction cooker

1 x Miele Dual oven

Miele Microwave

2 x Miele Washing Machines

### **Laundry**

2 x Miele Dryers

Ice Makers x 4

**Other Domestic Equipment** Bar Fridge x 3

Wine Cooler x 2

## **Tenders**

---

1 x Williams Jet Tender

1 x 6 meter Custom Tender (Tamsen) with Volvo engine

## **Sport, Leisure & Fitness**

---

**Jet Skis** 1 x Stand-up Yamaha SuperJet 701

Snorkelling gear.

Various donuts and inflatables

**Other Sports Equipment** 4 pairs of waterskis

3 x wake boards various sizes

Fishing rods

**Jacuzzi**

On the foredeck

Treadmill

Weight Bench

**Exercise equipment**

Dumbbells

Exercise Ball & mats

## General Description

NAMASTE has many unique and innovative attributes that make her stand out from the crowd. The first, noticeable as soon as you approach her, is the surprisingly pleasing "cappuccino" colour of her hull which accentuates her lines and hints at the earth tones and original ideas evident in her interior. Somehow the designers at Tamsen Yachts have managed to create a yacht with a length of 40 meters, yet with deck areas and interior spaces similar to much larger vessels. This was partly achieved by providing particularly generous headroom on the main and lower decks which, for example, in the main saloon at 2.47m easily surpasses that of many recent yachts of 50m and above. Namaste's contemporary Asian interior style is a testament to the origins of her name. The natural coloured woods used in her joinery combined with the creams and browns of leathers and fabrics create a backdrop for the prominent oriental features placed at focal points around the yacht. Overall the atmosphere is serene and light thanks to the huge windows and the clever use of large glass panels in ceilings and floors. Spaces are generous not only for the guests but also "below stairs" in the working areas of the yacht such as the galley and crew cabins. It is also clear that a great deal of thought went into using the decks of the yacht to their best advantage. Nowhere is this more evident than on the foredeck of the yacht where there is not only a comfortable lounging and dining area but also the yacht's jacuzzi. Not only does this area offer fabulous unobstructed views but also privacy from the quay when in port. In addition, the more traditional aft deck and bridge deck areas are unusually large and offer a choice of both shaded and sundrenched spots to enjoy. The owner of Namaste has had

her since her delivery in 2008. He has continuously invested in and upgraded the yacht under his ownership. She is now in better than new condition and has proved herself to be a popular and successful charter yacht in addition to giving great pleasure to the owner and his family. One of only two yachts built to this design, Namaste offers the rare opportunity to own a yacht of this size which is not a "production" yacht with many sisterships. She is special and will always be regarded as such.

## Recent Works

---

### **December 2013 RINA 5 Year Survey completed. Upgrades Undertaken 2011-2013**

Main Engines – MTU Standard Maintenance Procedures up to date.

Shaft removed for inspection.

Cutlass bearings replaced

Visual sight glass added to shaft cooling lines

Upgrade of shaft cooling system from flexible hose to hard pipe

Rudders and seals inspected

Anchor and Chain tube modification

UV Sterilizer upgrade

Hamman sewage treatment plant, complete rebuild

Black / Grey Tank piping modification

Water Maker upgrade – Additional Membranes fitted to allow for greater water making capacity

Water and Fuel tank tops refurbished.

New tank sensors fitted to fuel tanks and water tanks

Steering gear compartment – complete overhaul

(Cylinders / fittings / hoses replaced)

Garage Door Hydraulic System – complete overhaul

Headhunter Toilet System – Upgrade of plumbing system

Mega Test 380v / 24v Switchboards

Air Conditioning System: Additional raw water pump installed, new raw water distribution

manifold installed.

Refrigeration System: Upgrade Walk in Fridge System from R22 to R404a. New compressor, controls and expansion valve fitted

Repaint Paint Hull 2011

Repaint Tender

Garage Sea barrier modification and bilge pump modification.

Garage door Hydraulic - Electrical upgrade

Tender Launch System and cradle modified

Mastex Planned Maintenance System

Port / Stbd Generator Load Tested

Bridge

Navigation Lights- Marinelec control panel installed

Watertight doorways installed new.

Interior-

Carpets Replaced Saloon and Sky saloon

Saloon Windows – Master stateroom windows and Port holes replaced with Rina approved certified tempered 3 ply tinted glass.

Integral Air Con unit fitted to laundry compartment

Additional Miele Washing machines installed- 2012

Captain's Cabin – additional crew berth added – (Total 8)

Laundry Upgrade – New Shelving fitted

Deck -

Passerelle/gangway replaced Opacmare

Deck scuppers additional opened on hull and added to deck Rina certified.

Cushions exterior recovered with Sunbrella fabrics

Life Raft pockets modified for Launching

AV system –

Lantic audio system update

Sky TV added

## **Исключения**

---

При продаже яхты исключаются личные вещи владельца.

## **Отказ от ответственности**

---

Компания предоставляет описание судна или яхты добросовестно, но не может гарантировать точность этой информации, а также не ручается за техническое состояние. Покупатель должен проинструктировать своих агентов или оценщиков исследовать представленную информацию более подробно, по собственному желанию. Продажа судна или яхты, изменение цены или снятие с продажи будет происходить без предварительного уведомления.

# ФОТОГРАФИИ

**Main Saloon**



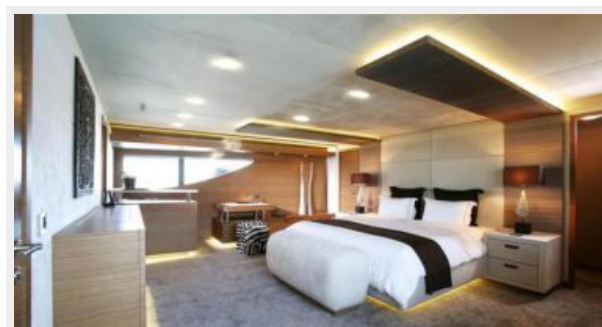
**Main Saloon**



**Upper Deck Dining Saloon**



**Owner's Stateroom**



**Master Bathroom**

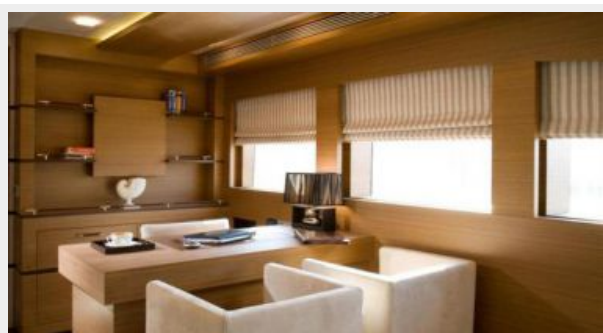


**Guest Stateroom**





**Study**



**Hallway**



**Aft Deck**



**Upper Deck**



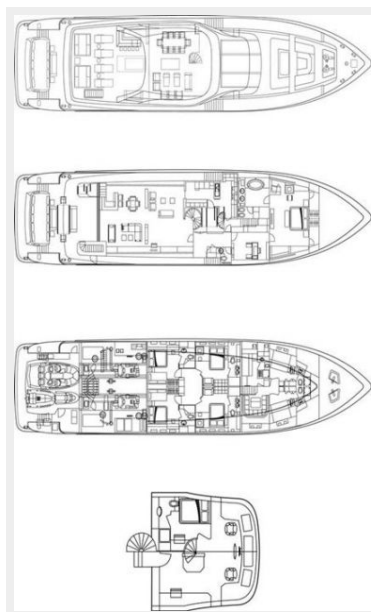
**Foredeck**



**Ariel Shot**



## Namaste GA plan



# КОНТАКТЫ

---

Андрей Шестаков (Andrey Shestakov) – ведущий яхтенный брокер отдела продаж яхт и судов компании Shestakov Yacht Sales Inc. Официальный представитель Shestakov Yacht Sales Inc. для русскоговорящих клиентов в центральном офисе компании в Майами/Форт Лодердейл/Флорида/США.

## Контактная информация

---

Email: [andrey@shestakovyachtsales.com](mailto:andrey@shestakovyachtsales.com)

Web: [shestakovyachtsales.com](http://shestakovyachtsales.com)

## Телефоны

---

Краснодарский край: **+7(918)465-66-44**

США, Майами, Флорида: **+1(954)274-4435**

## Время работы

---

Понедельник – Суббота: **9:00 - 21:00**  
EDT

Воскресенье: **Закрито**

## Адрес

---



Harbour Towne Marina, 850 NE 3rd St,  
STE 213, Dania, FL 33004