

CANYON RUNNER 2 — VIKING



Builder: VIKING

Year Built: 1997

Model: Sport Fisherman

Price: PRICE ON APPLICATION

Location: United States

LOA: 58' 0" (17.68m)

Beam: 18' 0" (5.49m)

Max Draft: 5' 2" (1.57m)

Cruise Speed: 29 Kts. (33 MPH)

Max Speed: 34 Kts. (39 MPH)

Our experienced yacht broker, Andrey Shestakov, will help you choose and buy a yacht that best suits your needs **CANYON RUNNER 2 — VIKING** from our catalogue. Presently, at Shestakov Yacht Sales Inc., we have a wide variety of yachts available on our sale's list. We also work in close contact with all the big yacht manufacturers from all over the world.

If you would like to buy a yacht **CANYON RUNNER 2 — VIKING** or would like help answering any questions concerning purchasing, selling or chartering a yacht, please call **+1(954)274-4435**

TABLE OF CONTENTS

TABLE OF CONTENTS	2
SPECIFICATIONS	4
Basic Information	4
Dimensions	4
Speed, Capacities and Weight	4
Hull and Deck Information	4
Engine Information	4
DETAILED INFORMATION	5
Vessel Walkthrough	5
Salon	5
Galley	5
Master Stateroom	5
VIP Stateroom	6
Guest Stateroom	6
Electrical Equipment	6
Fly Bridge	6
Cockpit and Deck Equipment	7
Mechanical Equipment	7
Exclusions	7
Disclaimer	7
PHOTOS	8
Salon	8
Salon	8
Galley	8
Galley	8
Dinette	9
Dinette	9
Master Stateroom	9

Master Stateroom	9
Head	10
Guest Stateroom	10
Head	10
Flybridge	10
Helm	11
Cockpit	11
Engine Room	11
Foredeck	11
Engine Room	11
Engine Room	11
CONTACTS	12
Contact details	12
Telephones	12
Office hours	12
Address	12

SPECIFICATIONS

Basic Information

Category: Sport Fisherman

Sub Category: Convertible

Model Year: 1997

Year Built: 1997

Country: United States

Coast Guard #: 1052648

Dimensions

LOA: 58' 0" (17.68m)

Beam: 18' 0" (5.49m)

Max Draft: 5' 2" (1.57m)

Speed, Capacities and Weight

Cruise Speed: 29 Kts. (33 MPH)

Max Speed: 34 Kts. (39 MPH)

Displacement: 81500 Pounds

Water Capacity: 260 Gallons

Holding Tank: 80 Gallons

Fuel Capacity: 1500 Gallons

Hull and Deck Information

Hull Material: Fiberglass

Hull Configuration: Modified V-Hull

Engine Information

Engines: 2

Manufacturer: MAN

Engine Type: Inboard

Fuel Type: Diesel

DETAILED INFORMATION

Vessel Walkthrough

Entering through the sliding door from the teak cockpit brings you into the spacious salon. High gloss teak interior with large salon windows both sides and aft provide plenty of natural light. All counter tops are white Corian. Immediately to starboard is the wet bar and Viking electrical panels hidden by high gloss teak cabinets and countertop. Further forward to starboard is the dinette finished in high gloss teak with u-shaped white ultra leather seating arrangement for 4. Above the dinette is a 32" TV hooked to a Samsung entertainment center with DVD player. To port in the salon is the white ultra leather L-shaped sofa with ample storage for plenty of rods and tackle underneath. Across from the dinette to port is the galley with all the amenities you need for travel including a full upright, side-by-side, refrigerator freezer with an icemaker. Moving forward down the companionway to starboard is the guest stateroom and head that doubles as the day head with separate door. Just forward and amidship to port is the master stateroom with private head and shower. Continuing forward in the companionway to the starboard is a washer/dryer cabinet with full-sized Kenmore washer and dryer. Directly to port is a linen closet with ample storage for towels and sheets. Finally, all the way forward is the VIP stateroom with queen berth and ensuite head and shower. All of the rooms have Cruisair SMX reverse cycle air conditioning.

Salon

The 58' Viking features a huge salon compared to anything in its class. All new carpet and new canvas runners installed 2006. All soft goods updated in 2003. Custom horizontal wood blinds cover the salon windows. An ottoman in the middle of the salon provides additional storage.

Galley

The forward area of the salon is the large galley featuring under counter lighting, Corian counter tops, and a full size refrigerator/freezer with icemaker. Generous cabinetry features deep pull-out pantry style upper cabinets and additional storage under the Corian counter tops. Across from the galley to starboard is the high gloss teak dinette with seating for 4. •Kenmore full-size refrigerator/freezer w/ice & water in door •Kenmore trash compactor •Kenmore dishwasher •'Insta Hot' hot water heater •Sharp microwave/convection oven •Garbage disposal •Recessed 3-burner electric stove with exhaust fan •Central Vacuum •Stackable Washer & Dryer in companionway

Master Stateroom

Located amidships on the port side is a huge master stateroom featuring an island queen berth facing forward and ample storage underneath. High gloss teak nightstands accompanied by twin lamps are on either side of the berth. The cedar-lined hanging locker with dresser and drawer

space provides generous storage space. A 13" TV/VCR and stereo unit and private head with shower and linen closet are also in the master. •13" TV/VCR •Stereo •Orthopedic mattress •Queen berth w/storage under •Designer bed spread •Nightstands w/ twin lamps (2) •Cedar-lined hanging closet •Dresser with ample drawer space •Private ensuite head w/Stall shower •Corian vanity w/sink •VacuFlush head •Linen storage closet

VIP Stateroom

Located in the bow, the VIP stateroom features a walk-around queen berth with additional storage underneath. It is accompanied by an ensuite head and shower and its own 13" TV/VCR. •13" TV/VCR •Orthopedic mattress •Island queen berth w/storage under •Designer bed spread •Cedar-lined closet •Overhead storage cabinets •Private head w/stall shower •Corian vanity top •VacuFlush head

Guest Stateroom

Located starboard amidships, the guest stateroom features upper and lower bunks with designer bed spreads and orthopedic mattresses. There is a cedar-lined hanging locker and storage drawers underneath. Ensuite access to the day-head is convenient for the guests in this stateroom. The guest stateroom is provided with a 13" TV/DVD player, as well.

Electronics & Navigation •Datamarine depth & speed, relative wind display (duplicate in tower) •Furuno FCV292 color sounder •Furuno FR1510 radar (72nm) 10kw (recalibrated 2006) •Furuno C-2000 fluxgate compass •Flo-scan fuel management system •ICOM MO125 DSC VHF radio (tower) •ICOM M127 (2) w/remote command mics •Northstar 962 GPS on bridge •Panasonic KXT 123211D phone system •Panasonic CQD-850 audio system w/ volume control on bridge •Robertson AP 300DLX Autopilot w/portable remote •Seatel DSS system

Electrical Equipment

•Automatic & manual battery charger •Battery disconnect switches •Battery parallel switch •110V, 220V AC electrical system •12V, 24V DC electrical system •24V & 120V lighting throughout •50amp/240V dockside electrical cable •20kw Onan generator (hrs) with two voltage stabilizer transformers

Fly Bridge

•Two (2) 2003 Bluewater teak helm seats •Upgraded helm station w/single lever controls •Pipewelders custom tuna tower w/ center ladder (teak steps) •6 man AVON life raft in canister •Pipewelders hydraulic outriggers plus center rigger •Strataglass enclosure w/EZ2CY front panel (2002) •8 rod rocket launcher on bridge rail

Cockpit and Deck Equipment

•2004 Bluewater fighting chair w/rigging drawer & cover •Custom tackle center w/bait sink, cutting board & bait freezer •Teak deck and covering boards (new 2003) •Refrigerated in-deck fish box w/macerator •Freshwater/saltwater wash down system •Pipewelders transom swim ladder •Simpson Lawrence V3000 windlass •Transom door w/gate •Transom livewell •8 rod holders in gunnel •Cockpit freezer •6 man AVON life raft •Extra props •Portable davit and mount for tender

Mechanical Equipment

•Sea recovery water maker (600 GPD) •Trim tabs •110V water pump •(4) Automatic bilge pumps •Bilge blowers •Bow thruster w/remote control •Engine temperature alarm •Emergency engine stops •Engine fuel prime pumps •Eskimo ice machine •Fiberglass reinforced fuel tanks •Fire control system •Hydraulic steering •Fuel/water separator filters; engines & generator •Generator fuel prime pump •Glendinning synchronizer •Holding tank w/dockside & overboard pump-out •60 gallon oil reserve tank w/exterior fill •Oil change system for engines & genset •Engine gauge panel •Engine room lights •Spare props •Trolling valves

Exclusions

Owner's personal belongings.

Disclaimer

The Company offers the details of this vessel or yacht in good faith but cannot guarantee or warrant the accuracy of this information nor warrant the condition of the vessel. A buyer should instruct his representatives, agents, or his surveyors, to investigate such details as the buyer desires validated. This vessel or yacht is offered subject to prior sale, price change, or withdrawal without notice.

PHOTOS

Salon



Salon



Galley



Galley



Dinette



Dinette



Master Stateroom



Master Stateroom



Head



Guest Stateroom



Head



Flybridge



Helm



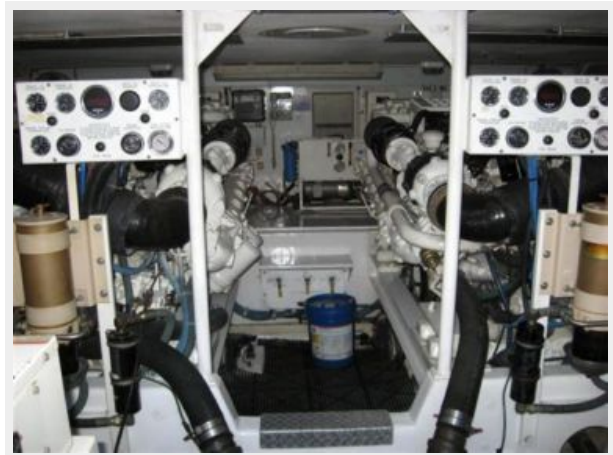
Cockpit



Foredeck



Engine Room



Engine Room



Engine Room



CONTACTS

Andrey Shestakov, leading yacht broker of the sales department of Shestakov Yacht Sales Inc. Shestakov Yacht Sales Inc., the official representative of the Miami/Fort Lauderdale FL headquarters.

Contact details

Email: andrey@shestakovyachtsales.com

Web: shestakovyachtsales.com/en/

Telephones

USA: +1(954)274-4435

Office hours

Monday – Saturday: **9:00 - 21:00** EDT

Sunday: **closed**

Address



Harbour Towne Marina, 850 NE 3rd St,
STE 213, Dania, FL 33004