

CANYON RUNNER 2 — VIKING



Судостроитель: VIKING

Год постройки: 1997

Модель: Катер для спортивной рыбалки

Цена: **ЦЕНА ЯХТЫ ПО ЗАПРОСУ**

Местонахождение: United States

Длина общая: 58' 0" (17.68m)

Ширина: 18' 0" (5.49m)

Макс. осадка: 5' 2" (1.57m)

Крейс. скорость: 29 Kts. (33 MPH)

Макс. скорость: 34 Kts. (39 MPH)

Купить **CANYON RUNNER 2 — VIKING** а также выбрать подходящую вам яхту из нашего каталога яхт вам поможет опытный яхтенный брокер Андрей Шестаков. На сегодняшний день компания **Shestakov Yacht Sales Inc.** имеет большое количество яхт в собственном списке продаж, а также тесно сотрудничает со всеми крупными яхтенными производителями по всему миру.

Для того чтобы купить яхту **CANYON RUNNER 2 — VIKING** а также проконсультироваться по любому вопросу связанному с покупкой, продажей, чартером яхт позвоните по телефону **+7(918)465-66-44**.

ОГЛАВЛЕНИЕ

ОГЛАВЛЕНИЕ	2
ХАРАКТЕРИСТИКИ	4
Основная информация	4
Размеры	4
Скорость, вместимость и масса	4
Корпус и палуба	4
Информация о двигателе	4
ПОДРОБНОЕ ОПИСАНИЕ	5
Vessel Walkthrough	5
Salon	5
Galley	5
Master Stateroom	5
VIP Stateroom	6
Guest Stateroom	6
Electrical Equipment	6
Fly Bridge	6
Cockpit and Deck Equipment	7
Mechanical Equipment	7
Исключения	7
Отказ от ответственности	7
ФОТОГРАФИИ	8
Salon	8
Salon	8
Galley	8
Galley	8
Dinette	9
Dinette	9
Master Stateroom	9

Master Stateroom	9
Head	10
Guest Stateroom	10
Head	10
Flybridge	10
Helm	11
Cockpit	11
Engine Room	11
Foredeck	11
Engine Room	11
Engine Room	11
КОНТАКТЫ	12
Контактная информация	12
Телефоны	12
Время работы	12
Адрес	12

ХАРАКТЕРИСТИКИ

Основная информация

Тип судна: Катер для спортивной рыбалки

Подкатегория: Convertible

Модельный год: 1997

Год постройки: 1997

Страна: United States

Номер регистрации в береговой охране: 1052648

Размеры

Длина общая: 58' 0" (17.68m)

Ширина: 18' 0" (5.49m)

Макс. осадка: 5' 2" (1.57m)

Скорость, вместимость и масса

Крейс. скорость: 29 Kts. (33 MPH)

Макс. скорость: 34 Kts. (39 MPH)

Водоизмещение: 81500 Pounds

Вместимость воды: 260 Gallons

Вместимость сточного бака: 80 Gallons

Объем топливного бака: 1500 Gallons

Корпус и палуба

Материал корпуса: Fiberglass

Комплектация корпуса: Modified V-Hull

Информация о двигателе

Двигатели: 2

Производитель: MAN

Тип двигателя: Inboard

Тип топлива: Diesel

ПОДРОБНОЕ ОПИСАНИЕ

Vessel Walkthrough

Entering through the sliding door from the teak cockpit brings you into the spacious salon. High gloss teak interior with large salon windows both sides and aft provide plenty of natural light. All counter tops are white Corian. Immediately to starboard is the wet bar and Viking electrical panels hidden by high gloss teak cabinets and countertop. Further forward to starboard is the dinette finished in high gloss teak with u-shaped white ultra leather seating arrangement for 4. Above the dinette is a 32" TV hooked to a Samsung entertainment center with DVD player. To port in the salon is the white ultra leather L-shaped sofa with ample storage for plenty of rods and tackle underneath. Across from the dinette to port is the galley with all the amenities you need for travel including a full upright, side-by-side, refrigerator freezer with an icemaker. Moving forward down the companionway to starboard is the guest stateroom and head that doubles as the day head with separate door. Just forward and amidship to port is the master stateroom with private head and shower. Continuing forward in the companionway to the starboard is a washer/dryer cabinet with full-sized Kenmore washer and dryer. Directly to port is a linen closet with ample storage for towels and sheets. Finally, all the way forward is the VIP stateroom with queen berth and ensuite head and shower. All of the rooms have Cruisair SMX reverse cycle air conditioning.

Salon

The 58' Viking features a huge salon compared to anything in its class. All new carpet and new canvas runners installed 2006. All soft goods updated in 2003. Custom horizontal wood blinds cover the salon windows. An ottoman in the middle of the salon provides additional storage.

Galley

The forward area of the salon is the large galley featuring under counter lighting, Corian counter tops, and a full size refrigerator/freezer with icemaker. Generous cabinetry features deep pull-out pantry style upper cabinets and additional storage under the Corian counter tops. Across from the galley to starboard is the high gloss teak dinette with seating for 4. •Kenmore full-size refrigerator/freezer w/ice & water in door •Kenmore trash compactor •Kenmore dishwasher •'Insta Hot' hot water heater •Sharp microwave/convection oven •Garbage disposal •Recessed 3-burner electric stove with exhaust fan •Central Vacuum •Stackable Washer & Dryer in companionway

Master Stateroom

Located amidships on the port side is a huge master stateroom featuring an island queen berth facing forward and ample storage underneath. High gloss teak nightstands accompanied by twin lamps are on either side of the berth. The cedar-lined hanging locker with dresser and drawer

space provides generous storage space. A 13" TV/VCR and stereo unit and private head with shower and linen closet are also in the master. •13" TV/VCR •Stereo •Orthopedic mattress •Queen berth w/storage under •Designer bed spread •Nightstands w/ twin lamps (2) •Cedar-lined hanging closet •Dresser with ample drawer space •Private ensuite head w/Stall shower •Corian vanity w/sink •VacuFlush head •Linen storage closet

VIP Stateroom

Located in the bow, the VIP stateroom features a walk-around queen berth with additional storage underneath. It is accompanied by an ensuite head and shower and its own 13" TV/VCR. •13" TV/VCR •Orthopedic mattress •Island queen berth w/storage under •Designer bed spread •Cedar-lined closet •Overhead storage cabinets •Private head w/stall shower •Corian vanity top •VacuFlush head

Guest Stateroom

Located starboard amidships, the guest stateroom features upper and lower bunks with designer bed spreads and orthopedic mattresses. There is a cedar-lined hanging locker and storage drawers underneath. Ensuite access to the day-head is convenient for the guests in this stateroom. The guest stateroom is provided with a 13" TV/DVD player, as well.

Electronics & Navigation •Datamarine depth & speed, relative wind display (duplicate in tower) •Furuno FCV292 color sounder •Furuno FR1510 radar (72nm) 10kw (recalibrated 2006) •Furuno C-2000 fluxgate compass •Flo-scan fuel management system •ICOM MO125 DSC VHF radio (tower) •ICOM M127 (2) w/remote command mics •Northstar 962 GPS on bridge •Panasonic KXT 123211D phone system •Panasonic CQD-850 audio system w/ volume control on bridge •Robertson AP 300DLX Autopilot w/portable remote •Seatel DSS system

Electrical Equipment

•Automatic & manual battery charger •Battery disconnect switches •Battery parallel switch •110V, 220V AC electrical system •12V, 24V DC electrical system •24V & 120V lighting throughout •50amp/240V dockside electrical cable •20kw Onan generator (hrs) with two voltage stabilizer transformers

Fly Bridge

•Two (2) 2003 Bluewater teak helm seats •Upgraded helm station w/single lever controls •Pipewelders custom tuna tower w/ center ladder (teak steps) •6 man AVON life raft in canister •Pipewelders hydraulic outriggers plus center rigger •Strataglass enclosure w/EZ2CY front panel (2002) •8 rod rocket launcher on bridge rail

Cockpit and Deck Equipment

•2004 Bluewater fighting chair w/rigging drawer & cover •Custom tackle center w/bait sink, cutting board & bait freezer •Teak deck and covering boards (new 2003) •Refrigerated in-deck fish box w/macerator •Freshwater/saltwater wash down system •Pipewelders transom swim ladder •Simpson Lawrence V3000 windlass •Transom door w/gate •Transom livewell •8 rod holders in gunnel •Cockpit freezer •6 man AVON life raft •Extra props •Portable davit and mount for tender

Mechanical Equipment

•Sea recovery water maker (600 GPD) •Trim tabs •110V water pump •(4) Automatic bilge pumps •Bilge blowers •Bow thruster w/remote control •Engine temperature alarm •Emergency engine stops •Engine fuel prime pumps •Eskimo ice machine •Fiberglass reinforced fuel tanks •Fire control system •Hydraulic steering •Fuel/water separator filters; engines & generator •Generator fuel prime pump •Glendinning synchronizer •Holding tank w/dockside & overboard pump-out •60 gallon oil reserve tank w/exterior fill •Oil change system for engines & genset •Engine gauge panel •Engine room lights •Spare props •Trolling valves

Исключения

При продаже яхты исключаются личные вещи владельца.

Отказ от ответственности

Компания предоставляет описание судна или яхты добросовестно, но не может гарантировать точность этой информации, а также не ручается за техническое состояние. Покупатель должен проинструктировать своих агентов или оценщиков исследовать представленную информацию более подробно, по собственному желанию. Продажа судна или яхты, изменение цены или снятие с продажи будет происходить без предварительного уведомления.

ФОТОГРАФИИ

Salon



Salon



Galley



Galley



Dinette



Dinette



Master Stateroom



Master Stateroom



Head



Guest Stateroom



Head



Flybridge



Helm



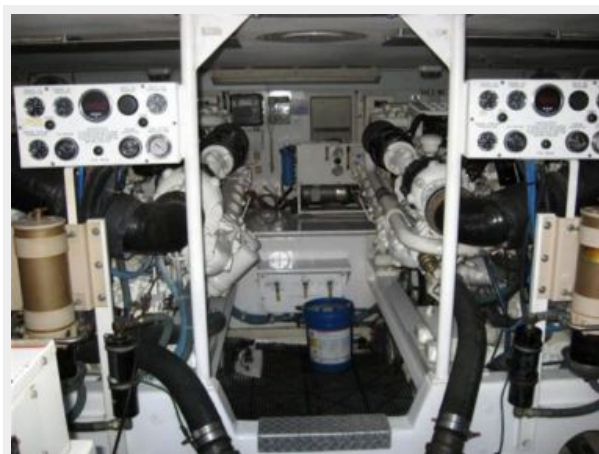
Cockpit



Foredeck



Engine Room



Engine Room



Engine Room



КОНТАКТЫ

Андрей Шестаков (Andrey Shestakov) – ведущий яхтенный брокер отдела продаж яхт и судов компании Shestakov Yacht Sales Inc. Официальный представитель Shestakov Yacht Sales Inc. для русскоговорящих клиентов в центральном офисе компании в Майами/Форт Лодердейл/Флорида/США.

Контактная информация

Email: andrey@shestakovyachtsales.com

Web: shestakovyachtsales.com

Телефоны

Краснодарский край: **+7(918)465-66-44**

США, Майами, Флорида: **+1(954)274-4435**

Время работы

Понедельник – Суббота: **9:00 - 21:00**
EDT

Воскресенье: **Закрето**

Адрес



Harbour Towne Marina, 850 NE 3rd St,
STE 213, Dania, FL 33004