

## MY GIRL — POSILLIPO



**Судостроитель:** POSILLIPO

**Год постройки:** 2001

**Модель:** Моторная яхта

**Цена:** **ЦЕНА ЯХТЫ ПО ЗАПРОСУ**

**Местонахождение:** Mexico

**Длина общая:** 80' 0" (24.38m)

**Ширина:** 20' 8" (6.30m)

**Макс. осадка:** 5' 4" (1.63m)

**Крейс. скорость:** 20 Kts. (23 MPH)

**Макс. скорость:** 26 Kts. (30 MPH)

Купить **My Girl — POSILLIPO** а также выбрать подходящую вам яхту из нашего каталога яхт вам поможет опытный яхтенный брокер Андрей Шестаков. На сегодняшний день компания **Shestakov Yacht Sales Inc.** имеет большое количество яхт в собственном списке продаж, а также тесно сотрудничает со всеми крупными яхтенными производителями по всему миру.

Для того чтобы купить яхту **My Girl — POSILLIPO** а также проконсультироваться по любому вопросу связанному с покупкой, продажей, чартером яхт позвоните по телефону **+7(918)465-66-44**.

# ОГЛАВЛЕНИЕ

ОГЛАВЛЕНИЕ	2
ХАРАКТЕРИСТИКИ	3
Обзор	3
Основная информация	3
Размеры	3
Скорость, вместимость и масса	3
Размещение	4
Корпус и палуба	4
Информация о двигателе	4
ПОДРОБНОЕ ОПИСАНИЕ	5
Accommodations	5
Galley	6
Electronics	7
Electrical Equipment	8
Deck Equipment	8
Mechanical	9
Remarks	10
Exclusions	10
Исключения	10
Отказ от ответственности	11
ФОТОГРАФИИ	12
КОНТАКТЫ	16
Контактная информация	16
Телефоны	16
Время работы	16
Адрес	16

# ХАРАКТЕРИСТИКИ

## Обзор

Built by the prestigious Cantieri Navali Rizzari Sabaudia of Italy. Built to US specifications. An unusually low hour vessel that has been maintained with an open checkbook. This is the cleanest, best maintained 4 stateroom plus crew yacht available in the world. A truly turn-key captain maintained yacht.

## Основная информация

Тип судна: Моторная яхта

Модельный год: 2001

Год постройки: 2001

Страна: Mexico

Открытая палуба мостика: Да

Кубрик: Да

## Размеры

Длина общая: 80' 0" (24.38m)

Ширина: 20' 8" (6.30m)

Макс. осадка: 5' 4" (1.63m)

## Скорость, вместимость и масса

Крейс. скорость: 20 Kts. (23 MPH)

Крейсерская скорость поворота: 1900 Kts.

Макс. скорость: 26 Kts. (30 MPH)

Макс. скорость поворота: 2300 Kts.

Водоизмещение: 211643.77152 Pounds

Вместимость воды: 500 Gallons

Объем топливного бака: 2900 Gallons

## Размещение

---

**Всего кают:** 4

**Всего коек:** 8

**Всего ком. состава:** 4

**Койки экипажа:** 2

**Спальных мест экипажа:** 2

**Комм. состав экипажа:** 1

## Корпус и палуба

---

**Материал корпуса:** Fiberglass

## Информация о двигателе

---

**Двигатели:** 2

**Производитель:** Caterpillar

**Модель:** 3412

**Тип двигателя:** Inboard

**Тип топлива:** Diesel

# ПОДРОБНОЕ ОПИСАНИЕ

## Accommodations

When approaching the vessel by land or sea, you will immediately be impressed by the sensual Italian lines of this exceptional yacht. Owners and Guests can easily board by tender from the huge teak covered swim platform. There are port and starboard transom staircases up to the covered aft deck. Boarding the vessel by land is made easy by the hydraulic "Pin-Craft" passarelle, which extends out of the port transom staircase. The aft deck is shaded by the flybridge overhang. Several recessed dome lights provide illumination to the aft deck. The sole is covered in teak. A large high gloss teak table on a stainless steel pedestal provides seating for six. A long bench seat along the transom and several foldable teak chairs compliment the table. A large flat screen TV provides entertainment to the aft deck party. Other features in this area include a teak staircase up to the flybridge deck. Port and starboard, Maxwell winches for line handling, recessed courtesy lighting, and underwater lighting to provide aquatic viewing. Wide teak decks with high gunwales make easy access to the bow. Port and starboard line and fender lockers are located just below the forward windshield. Two large sunpads provide a great viewing vantage point and two water resistant speakers provide entertainment. Access to the crew quarters are just forward of the sun pad. The crew quarters have over under single berths with two flat screen TVs, head, shower and separate climate controls. The bow is equipped with teak decks, stainless steel hand rails and a huge Lofrans horizontal windlass with a vertical line winch. A large Bruce anchor and chain rode make for easy anchoring. Access to the interior of the vessel is through the large stainless steel framed glass sliding doors aft or the two water tight doors midship on either side of the galley.

Entering the roomy salon from the aft deck you will encounter a stylish interior featuring high gloss teak wall coverings and cabinets, along with the sole covered in a light sand Berber carpet. The port salon cabinets conceal a state of the art entertainment system with a new pop up 46" Samsung 3-D flat screen TV, CD, New Sony Blue Ray & I-Pod dock. Beverages are easily attained with access to a portable refrigerator and ice maker along with a wine cooler and glass and crystal cabinets. Below the pop up TV is a tan leather love seat. Across to port is an impressive tan leather settee with a central ottoman and forward of the settee is the formal dining area with a high gloss teak pedestal table and six chairs along with a beautiful semi-nude art piece. An enclosed day head is conveniently located just forward of the salon to port.

Located midship just forward of the dinette is the enclosed galley. GE stainless steel appliances are featured along with solid granite countertops and a new Panasonic microwave. Abundant high gloss teak cabinets provide plenty of storage for long voyages. Other galley features include stainless steel utensil rack, double stainless steel sinks, water tight door to side deck and large stainless steel framed windows that provide abundant natural light. Forward of the galley is the lower helm station to starboard. A full compliment of electronics make for effortless navigation. Large raked windshields provide great visibility. High gloss teak and leather accents give the helm a sophisticated look. Across from the helm to port is an L-shaped leather seating area

which makes for a great breakfast nook or a wonderful forward viewing area. A staircase down to the lower companionway provide access to the Owner and Guest cabins. The master cabin aft of the companionway is a full beam to beam cabin providing ample room. A large centerline queen berth makes for a great night of sleep. Stainless steel oval portlights on both sides along with a variety of recessed lighting and accent lighting brighten up the interior. A full array of AV equipment along with flat panel TV provide entertainment. Other items include leather settee to starboard. Numerous drawers and cabinets and walk in closet. The master head features double sinks with granite counters along with tile floors. A large glass door encloses the home size tiled shower stall with a convenient seating area.

The VIP cabin forward boasts a centerline queen berth. As large as most master cabins. This cabin will indulge guests with all the considerable amenities of the master on a slightly smaller scale. A private head and shower along with a full media package will make any stay a pleasure. The two guest cabins feature the same elegant interior. One cabin has two single berths side by side along with a fold down single trundle berth. The other has an offset double berth. A guest head is completed with a separate shower stall.

The interior staircase that accesses the flybridge has a large stainless steel framed glass sliding door. A generous stainless steel Bimini top frame provides ample shade to the upper bridge deck. A forward plexi-glass windshield provides wind deflection. A sturdy radar arch supports the satellite TV and phone domes along with an array of antennas and navigation lighting. The helm forward to port has a complete set of redundant gauges, electronics, and controls. A bench seat and navigation table is across from the helm. Behind the helm is an enclosed BBQ, stainless steel sink, and numerous storage compartments.

A mid deck wet bar port side includes double drawer refrigeration, large capacity ice maker, and additional storage. Behind the wet bar is the aft bridge deck dining area. The dual stainless steel post pedestal table with long bench seat and additional foldable teak chairs make for a memorable evening under the stars. Aft of the radar arch is the tender area which includes a 600 kg electric davit, and a Four Stroke wave runner.

## Galley

---

- GE Oven
- GE 4 burner glass top stove
- Miele BBQ on flybridge
- New Panasonic microwave oven
- GE refrigerator
- Uline refrigerator in salon
- Uline ice maker in salon
- Central vac system
- 200 liter hot water heater
- GE washer/dryer engine room
- Bosch washer/dryer guest cabin

- Granite galley countertops
- Wine cooler salon
- Double stainless steel sink w/ pull out spray faucet
- Stainless steel rack
- High gloss teak cabinets

## Electronics

---

### Lower Helm:

- 5" White Star compass
- Robertson AP20 autopilot
- Raymarine 72 mile radar
- Raymarine GPSEbox 2 - software updated 2013
- Furuno FM8500 VHF
- Hailer
- KVH Trac Phone
- Raytheon ST60 Depthfinder
- Raytheon Speed Log
- Raytheon Sea Temp
- Raytheon Windspeed

### Upper Helm:

- 3" Zenith compass
- Robertson AP20 Autopilot repeater
- Raymarine 72 Mile radar
- Rayarine 120 GPS
- Raytheon RN300 GPS
- Raymarine E-120 Chart Plotter
- Furuno 8500 VHF
- Hailer
- Raytheon ST60 depthfinder
- Raytheon ST60 Speed/temp/wind gauge

### Audiovisual/Electronics:

- New 46" Samsung 3-D flatscreen pop up in salon
- New Blue Ray in Salon
- Denon DV - Salon
- Sony TV/Denon DVD - Master
- Sharp TV/Denon VD - Forward Cabin
- Sharp TV – port, starboard, crew, aft deck
- Sony TV – starboard crew

- CCTV w/ 3 cameras
- KVH Trac Vision
- Denon AM/FM CD player – Salon
- Denon surround sound Receiver – Salon
- Sony AM/FM CD player – Guest, Crew cabin
- IPOD docking station
- Sirius satellite radio
- Niles amplifier – Salon

## Electrical Equipment

---

- Kohler 32kw generator – Port,1987 hrs.
- Kohler 32kw generator – Starboard,1700 hrs.
- 24v DC electrical system
- 110v/220v AC electrical system
- (2) 75 amp Mastervolt battery chargers
- 100 amp Mastervolt charger
- 100 amp inverter charger
- (4) 4D 12v batteries - replaced 2012
- (20) 12v batteries - batteries replaced 2012
- (4) battery switches
- 24v DC & 110v AC lighting
- (2) 50 amp shore power on reels
- AC & DC distribution panels
- AC & DC volt & amp gauges

## Deck Equipment

---

- Bruce anchor
- 200' chain
- Lofrans windlass with remote
- (2) Maxwell 2500 aft deck winches - rebuilt 2012
- 600 kg dinghy davit
- PinCraft passarelle - new hoses 2012
- Aluminum gangway
- Sea Doo Jet Ski tender 4 stroke
- Bimini top with stainless steel frame - new 2012
- Radar arch, fiberglass
- Flybridge 2 drawer U-Line refrigerator
- Flybridge ice maker
- 6 Man liferaft
- (2) life rings
- SATfind 406 EPIRB



- Twin air horns
- (7) 2.5 lb. dry powder fire extinguisher
- (10) PFDs type II
- (12) other PFDs
- Flare kit
- Ships bell
- First aid kit
- Search light
- Anchor light
- Running lights
- (4) lights below swim platform
- (5) underwater lights
- Port & starboard stainless transom gates
- Integral fiberglass swim platform with storage
- Stainless steel swim ladder
- (4) deck showers
- Teak forward, side & aft decks
- Aft deck teak staircase
- Stainless steel hand rails – port & starboard decks
- Stainless steel bow rails
- Port & starboard transom staircases
- Large aft deck bench seat
- Covered aft deck
- Teak on swim platform
- (4) swim platform storage compartments
- Large aft deck lockers – port & starboard
- Large aft deck teak table with stainless steel pedestal
- (6) aft deck dome lights
- Port & starboard deck dome lights
- Port & starboard forward gear lockers
- Forward deck crew hatch
- (2) forward deck stereo speakers
- Windshield washer & wipers
- Flybridge stainless steel sliding hatch
- Flybridge wet bar with fridge drawers & icemaker to port
- Flybridge stainless steel sink & BBQ to starboard
- Forward flybridge helm to starboard with full electronics & instrumentation
- Teak flybridge sole
- Large pedestal table flybridge port aft with bench seat & teak chairs

## Mechanical

---

- Bilge blower

- Cabin/bridge controls
- Engine alarm/emergency engine stop
- Fresh water cooling system
- Fuel shut off valve
- Thermal acoustical insulation
- Hydraulic steering
- Synchronizers
- ZF transmission 2.448:1
- (2) large fixed CO2 fire tanks - 24v w/ hydrant, hoses, nozzles (fore & aft)
- Hydraulic PTO on engine
- Bilge alarms
- Emergency engine driven bilge pumps – port & starboard
- Smoke detector
- All bronze below water thru-hulls
- Service Air compressor
- Portable shop vac
- Triple Racor fuel filters
- 4 Blade Nibral props
- Stainless steel shaft
- American twin blade bow thruster
- Mairne Air “Condari” chilled water system - rebuilt 2012
- Reverse cycle heat
- 500L holding tank
- 800 GPD Sea Recovery water maker
- Twin cylinder trim tabs - resealed 2012

## Remarks

---

Built by the prestigious Cantiee Navali Rizzari Sabaudea of Italy. Built to US specifications. An unusually low hour vessel that has been maintained with an open checkbook. This is the cleanest, best maintained 4 stateroom plus crew yacht available in the world. A truly turn-key captain maintained yacht.

## Exclusions

---

Owner's personal effects.

## Исключения

---

При продаже яхты исключаются личные вещи владельца.

---

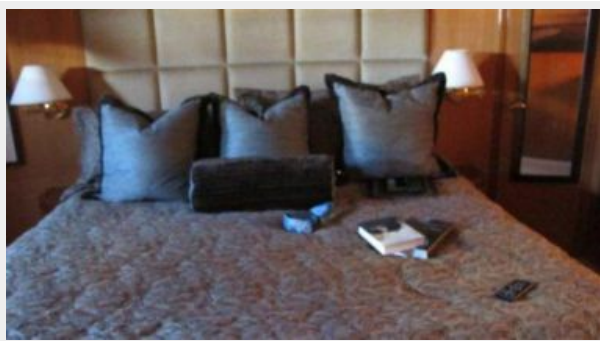
## Отказ от ответственности

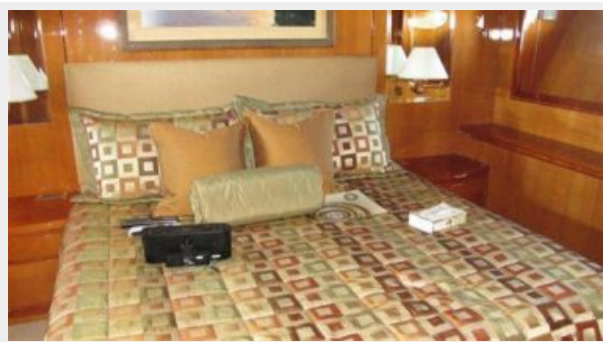
---

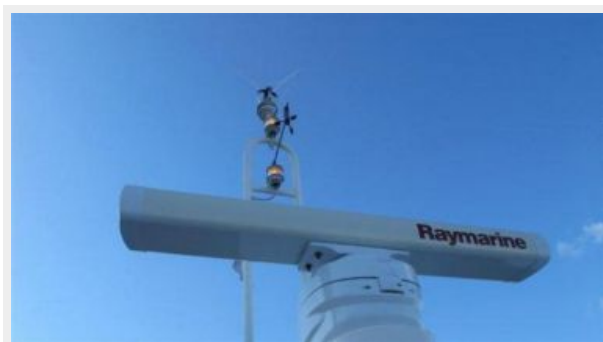
Компания предоставляет описание судна или яхты добросовестно, но не может гарантировать точность этой информации, а также не ручается за техническое состояние. Покупатель должен проинструктировать своих агентов или оценщиков исследовать представленную информацию более подробно, по собственному желанию. Продажа судна или яхты, изменение цены или снятие с продажи будет происходить без предварительного уведомления.

# ФОТОГРАФИИ









# КОНТАКТЫ

---

Андрей Шестаков (Andrey Shestakov) – ведущий яхтенный брокер отдела продаж яхт и судов компании Shestakov Yacht Sales Inc. Официальный представитель Shestakov Yacht Sales Inc. для русскоговорящих клиентов в центральном офисе компании в Майами/Форт Лодердейл/Флорида/США.

## Контактная информация

---

Email: [andrey@shestakovyachtsales.com](mailto:andrey@shestakovyachtsales.com)

Web: [shestakovyachtsales.com](http://shestakovyachtsales.com)

## Телефоны

---

Краснодарский край: **+7(918)465-66-44**

США, Майами, Флорида: **+1(954)274-4435**

## Время работы

---

Понедельник – Суббота: **9:00 - 21:00**  
EDT

Воскресенье: **Закрыто**

## Адрес

---



Harbour Towne Marina, 850 NE 3rd St,  
STE 213, Dania, FL 33004