

## TAITTINGER — BURGER



**Судостроитель:** BURGER

**Год постройки:** 1980

**Модель:** Моторная яхта

**Цена:** **ЦЕНА ЯХТЫ ПО ЗАПРОСУ**

**Местонахождение:** United States

**Длина общая:** 68' 0" (20.73m)

**Ширина:** 18' 2" (5.54m)

**Макс. осадка:** 5' 5" (1.65m)

**Крейс. скорость:** 15 Kts. (17 MPH)

**Макс. скорость:** 18 Kts. (21 MPH)

Купить **TAITTINGER — BURGER** а также выбрать подходящую вам яхту из нашего каталога яхт вам поможет опытный яхтенный брокер Андрей Шестаков. На сегодняшний день компания **Shestakov Yacht Sales Inc.** имеет большое количество яхт в собственном списке продаж, а также тесно сотрудничает со всеми крупными яхтенными производителями по всему миру.

Для того чтобы купить яхту **TAITTINGER — BURGER** а также проконсультироваться по любому вопросу связанному с покупкой, продажей, чартером яхт позвоните по телефону **+7(918)465-66-44**.

# ОГЛАВЛЕНИЕ

ОГЛАВЛЕНИЕ	2
ХАРАКТЕРИСТИКИ	4
Основная информация	4
Размеры	4
Скорость, вместимость и масса	4
Размещение	4
Корпус и палуба	4
Информация о двигателе	5
ПОДРОБНОЕ ОПИСАНИЕ	6
Remarks	6
Accommodations	6
Main Salon	6
Aft Deck Salon	6
Galley	7
Powder Room	7
Master Stateroom	7
Guest Stateroom	7
Pilothouse	8
Flybridge	8
Electrical Equipment	9
Deck Equipment	9
Engine & Mechanical Equipment	10
Construction Details	10
Exclusions	11
Исключения	11
Отказ от ответственности	11
ФОТОГРАФИИ	12
КОНТАКТЫ	15

---

Контактная информация	15
Телефоны	15
Время работы	15
Адрес	15

---

# ХАРАКТЕРИСТИКИ

## Основная информация

Тип судна: Моторная яхта	Подкатегория: Semi-Displacement
Модельный год: 1980	Год постройки: 1980
Страна: United States	Открытая палуба мостика: Да

## Размеры

Длина общая: 68' 0" (20.73m)	Ширина: 18' 2" (5.54m)
Макс. осадка: 5' 5" (1.65m)	

## Скорость, вместимость и масса

Крейс. скорость: 15 Kts. (17 MPH)	Макс. скорость: 18 Kts. (21 MPH)
Вместимость воды: 1257 Gallons	Объем топливного бака: 2100 Gallons

## Размещение

Всего кают: 3	Спальные места: 6
Всего ком. состава: 2	Каюты экипажа: 2
Койки экипажа: 3	Спальных мест экипажа: 4

## Корпус и палуба

Материал корпуса: Aluminum	Материал палубы: Teak
Комплектация корпуса: Semi-Displacement	Дизайнер корпуса: J.B. Hargrave

## Информация о двигателе

---

**Двигатели:** 2

**Производитель:** General Motors

**Модель:** 12V71TI's

**Тип двигателя:** Inboard

**Тип топлива:** Diesel

---

# ПОДРОБНОЕ ОПИСАНИЕ

---

## Remarks

---

TAITTINGER has all the attributes of a first class custom yacht. Her beautiful, natural woodwork throughout, main deck galley, powder room, fully updated electronics, Atlas shore power management system, walk-in engine room, updated, full thickness teak decks, fresh paint job, are just a short list of the many highlights to be found aboard TAITTINGER. TAITTINGER is a comfortable and secure yacht, which can be operated by a couple or with the assistance of crew. The flush deck wide body design and resulting interior comfort is a tribute to both the current owners and the builder.

## Accommodations

---

TAITTINGER has accommodations for six in three staterooms, plus are separate crew quarters for 3-4 persons. Access to the owner and guest staterooms is from the main deck stairway to port, midway between the aft deck salon and the main salon.

## Main Salon

---

Aft of the forward pilothouse and galley is the full width main salon with a stone topped formal dining table forward to port with seating for 6. A custom sofa with built-in storage beneath the cushions is opposite to starboard facing a custom, timber built cocktail table.

- LG 42" flat screen TV 1080p HD
- Crestron AV CP2 control system
- iPod dock
- Direct TV receiver
- CD MP3 player
- Elan speaker selection system
- Adcom AM/FM tuner

## Aft Deck Salon

---

All the way aft is the aft deck salon. A built in bench seat across the stern faces a custom built ottoman which converts for use as a cocktail table or dining table. Utilizing both dining areas the yacht is capable of hosting sit-down dinner parties for 12. To port in the aft deck salon is the wet bar with bottle and glass storage, sink and soda dispenser, and Kitchenaid ice maker. Opposite to starboard is additional storage along with two built-in Marvel refrigerators.

---

## Galley

---

The Galley is U-shaped with wraparound Corian counters and abundant storage above and below the countertops. The galley is well lit from overhead and indirect lighting as well as from a large window and a round portlight in the port side bulkhead.

- Amana 3 door refrigerator/freezer with ice and water dispenser
- Modern Maid 4 burner range and oven
- Maytag dishwasher
- GE Profile microwave
- Nutone food processor
- Cuisinart food processor
- Black & Decker coffee maker
- Black & Decker toaster oven
- Lucent phone set
- Double stainless steel sinks w/ disposal
- Whirlpool trash compacter

---

## Powder Room

---

Opposite the galley to starboard is the Powder Room with tile floor, granite counter top, gold plate sink and fixtures, vacuflush head, and Alabaster sconce lighting.

---

## Master Stateroom

---

The Master Stateroom is aft with a centerline queen bed. There are abundant drawers in port and starboard bureaus; his and hers double door closets are forward of the bureaus. The master head is forward to starboard with marble tile flooring and walls surrounding a built-in, full sized tub. A flush mounted sink sits upon a granite counter top with gold plate fixtures. A Sony flatscreen is mounted on the forward bulkhead of the master stateroom with access to the ship's satellite TV antenna through a dedicated receiver. The vessel also has the Crestron system for access to the vessel's main audio and video components.

---

## Guest Stateroom

---

Two identical Guest Staterooms are forward to port and starboard and are furnished with twin lower berths separated by a bedside cabinet. The guest staterooms share a full sized head with shower which is accessed from the port side stateroom or from the hallway. The guest head is also nicely appointed with marble tile flooring and granite countertops, tiled shower and gold plate fixtures. The headliners throughout TAITTINGER were replaced in 2004 with a soft white vinyl and fitted with halogen lighting and updated speaker systems.

---

## Pilothouse

---

The Pilothouse is all the way forward on the main deck with access to the side decks and bow through port and starboard sliding doors. The pilothouse woodwork is natural finished teak including teak framed screen doors fitted to port and starboard. Access to the crew quarters is forward and down; access to the galley and main salon is aft; access to the flybridge is also from the pilothouse by teak stairs offset to starboard.

- Motorola scanner
- Blue Sea Systems 12 & 32V volt meters; Ammeter
- SEA 330 SSB radio
- Furuno GOS WAAS Navigator
- Robertson AP 300X autopilot control
- Autohelm SEA TALK depth and speed indicator
- Icom ICM 127 VHF radio
- Davis weather monitor
- Quantum Adaptive Roll Control ARC 3000
- Naiad stabilizers with dual hydraulic pumps
- Moose security terminal
- Headhunter tank monitor
- Floscan monitors
- Raytheon loud hailer
- Custom electrical system monitor
- Carlisle & Finch search light remote control
- Simrad Anritsu radar with ARPA
- Danforth magnetic compass
- HP Officejet 7410 printer, fax, copier
- Lucent phone set

---

## Flybridge

---

From the pilothouse up the teak stairs is the flybridge with two helm chairs forward and companion bench seating aft to port. The helm area is protected by a bimini top and 3 sided Isinglass enclosure.

- Raymarine E120 multi function monitor, weather, radar, CCTV, DSS
- Robertson AP300X autopilot
- Autohelm SEA TALK depth and speed indicator
- Furuno radar monitor
- SEA 156 VHF radio
- Motorola scanner
- Danforth magnetic compass
- Quantum stabilizer control pad
- C&F searchlight remote control



---

## Electrical Equipment

---

TAITTINGER is engineered with a main distribution panel and source power selector switches in the engine room. There are then additional distribution sub panels in logical areas throughout the vessel. Originally built as a 100 amp single phase system, TAITTINGER was recently fitted with an Atlas Shore Power Management system and converted to 100 amp, 3 phase, for quieter and more efficient operation.

- Westerbeke 30kw generators
- Atlas Frequency Converter
- Atlas Smart Box
- 12V & 32V DC; 120V & 240V AC Systems
- 2 banks of 32V batteries
- 2 banks of 12V batteries
- 12V & 32V battery chargers
- Glendenning Cablemaster shore cord reel
- Ward's galvanic isolator

---

## Deck Equipment

---

- 15.5' Novurania hard bottom inflatable complete with 50 hp Yamaha outboard and cover.
- Marquip low profile electric davit.
- Givens liferaft in canister with hydrostatic release.
- TracVision KVH G4 Satellite dome
- Ships bell
- 406 Mghz GPIRB
- Furuno closed array radar scanner
- Simrad Anritsu open array radar scanner
- Anemometer
- 2 Pompanette helm chairs on bridge
- False stack with storage inside
- Dual 3 trumpet Kahlenberg air horns
- Side mount boarding ladder
- Tide ride sea stairs
- Carlisle and Finch remote control searchlight
- Bow seat with cushions and cover
- Two foredeck mounted dunnage boxes
- Ideal electric anchor windlass with chain gypsy
- Bow mounted Navy type anchor with chain rode
- Burger anchor davit
- Fenders and lines
- Life jackets

---

## Engine & Mechanical Equipment

---

- Twin Detroit Diesel 12v71s rebuilt alternately in 2007-2008, upgraded to 750 hp
- Walker Air-sep equipped
- Pyrometer exhaust temperature sensors installed for turbo monitoring
- Dual Raycor fuel filters with vacuum gauges and FloScan meters
- Glendenning synchronizer
- Drip-less shaft seals
- Spare propellers and stub shaft
- New mufflers 2005
- Cruisair reverse cycle air conditioning
- Fresh water system: 1,257 gallon capacity
- Dual 110v pumps, pressure accumulator tank
- 800 gal per day Sea Recovery water maker
- 2 wash down fittings – foredeck, and flybridge
- Sealand vacuflush fresh water heads
- Gray and black water integral holding tanks with pump-out facility or overboard discharge
- Engine room workbench with vise, tool chest underneath, fold down fresh water sink
- 110v florescent and 32v battery incandescent lighting
- 30-gallon lube oil reservoir with built-in 110v pump changing system for engines and gensets
- Tankage consists of three fuel tanks
- Water tankage is 1,257 gallons
- Black water (sewage) is 700 gallons, and gray water (sinks/showers) 700 gallons
- All tanks are aluminum integral to hull creating double bottom safety feature
- Hersey volume gauges on all fuel and water tanks
- Headhunter electronic tank gauge system
- Fuel transfer pump
- Kahlenberg 120v air compressor and accumulator tank for the dual Kahlenburg horns, triplepilothouse air-activated windshield wipers and air jacks in the engine room and flybridge
- Naiad stabilizers driven by redundant pumps on each main engine
- Stabilizers upgraded to Quantum digital controlled actuators
- Bennett trim tabs
- Washer and dryer in crew quarters forward

---

## Construction Details

---

TAITTINGER was built in Manitowoc, Wisconsin by Burger's legendary craftsmen as "Auf Wiedersehen VII", launched 9/18/80. TAITTINGER offers all aluminum construction with athwartship framing, four watertight bulkheads, integral baffled tankage, isolated through-hull valves, and piping and electrical systems that are among the best to be found in shipbuilding today. The hull plating aboard TAITTINGER is #5086 aluminum alloy, ranging 1/2 inch thickness

to critical areas of the bottom to 3/8 inch to 5/16 inch on hull sides to ¼ inch in the yachts superstructure. Full-length spray rails and rub rails are welded aluminum, while cap rails and handrails are traditional varnished teak. The interior joiner work on TAITTINGER is teak, natural finished in the pilothouse and walnut stained elsewhere.

## Exclusions

---

Artwork, accessories, and personal items.

## Исключения

---

При продаже яхты исключаются личные вещи владельца.

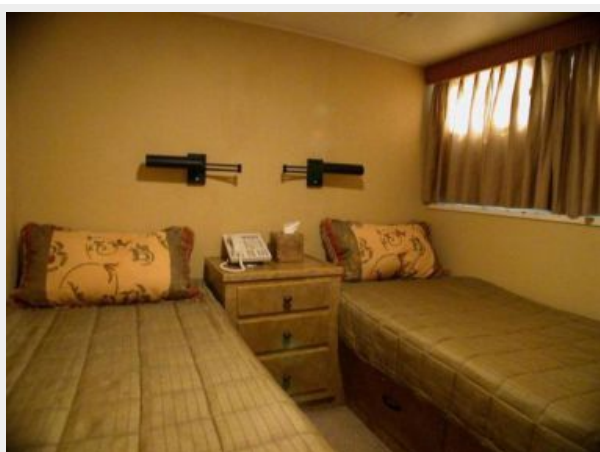
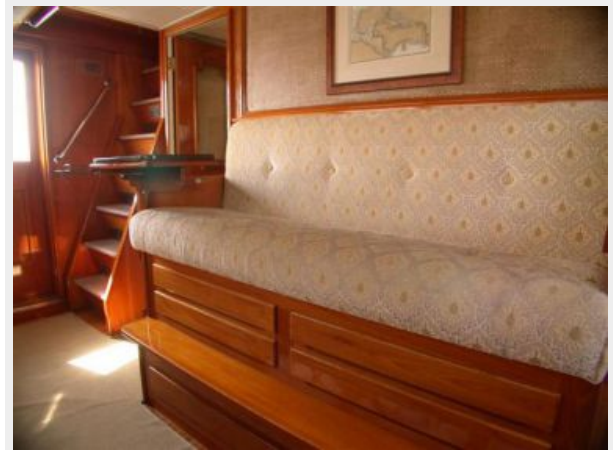
## Отказ от ответственности

---

Компания предоставляет описание судна или яхты добросовестно, но не может гарантировать точность этой информации, а также не ручается за техническое состояние. Покупатель должен проинструктировать своих агентов или оценщиков исследовать представленную информацию более подробно, по собственному желанию. Продажа судна или яхты, изменение цены или снятие с продажи будет происходить без предварительного уведомления.

# ФОТОГРАФИИ







# КОНТАКТЫ

---

Андрей Шестаков (Andrey Shestakov) – ведущий яхтенный брокер отдела продаж яхт и судов компании Shestakov Yacht Sales Inc. Официальный представитель Shestakov Yacht Sales Inc. для русскоговорящих клиентов в центральном офисе компании в Майами/Форт Лодердейл/Флорида/США.

## Контактная информация

---

Email: [andrey@shestakovyachtsales.com](mailto:andrey@shestakovyachtsales.com)

Web: [shestakovyachtsales.com](http://shestakovyachtsales.com)

## Телефоны

---

Краснодарский край: **+7(918)465-66-44**

США, Майами, Флорида: **+1(954)274-4435**

## Время работы

---

Понедельник – Суббота: **9:00 - 21:00**  
EDT

Воскресенье: **Закрито**

## Адрес

---



Harbour Towne Marina, 850 NE 3rd St,  
STE 213, Dania, FL 33004