

"CHARM III" — GRAND BANKS



Builder: GRAND BANKS

Year Built: 2000

Model: Cruiser

Price: PRICE ON APPLICATION

Location: United States

LOA: 49' 0" (14.94m)

Beam: 16' 0" (4.88m)

Min Draft: 4' 4" (1.32m)

Cruise Speed: 18 Kts. (21 MPH)

Max Speed: 30 Kts. (35 MPH)

Our experienced yacht broker, Andrey Shestakov, will help you choose and buy a yacht that best suits your needs "Charm III" — GRAND BANKS from our catalogue. Presently, at Shestakov Yacht Sales Inc., we have a wide variety of yachts available on our sale's list. We also work in close contact with all the big yacht manufacturers from all over the world.

If you would like to buy a yacht "Charm III" — GRAND BANKS or would like help answering any questions concerning purchasing, selling or chartering a yacht, please call +1(954)274-4435

TABLE OF CONTENTS

| | |
|--|----|
| TABLE OF CONTENTS | 2 |
| SPECIFICATIONS | 4 |
| Basic Information | 4 |
| Dimensions | 4 |
| Speed, Capacities and Weight | 4 |
| Accommodations | 4 |
| Hull and Deck Information | 4 |
| Engine Information | 5 |
| PHOTOS | 6 |
| Starboard Side From Aft | 6 |
| Cruising Comfortably | 6 |
| Long Foredeck w/ Wide Walkarounds | 6 |
| Aft Cockpit | 6 |
| Helmstation | 6 |
| Helmstation Seating | 6 |
| TV for Entertainment Underway | 7 |
| Custom Table Top For Dining | 7 |
| Companion Seating on Stbd | 7 |
| Entrance to Salon, Galley, and Berths | 7 |
| Removed Dining Settee for 3rd Berth | 8 |
| Spacious Galley | 8 |
| 3rd Berth where lower Dinette Settee was | 8 |
| Companionway to Berthing Area | 8 |
| VIP Stateroom | 9 |
| VIP Single Berth | 9 |
| VIP Single Berth | 9 |
| Day Head or 2nd Head | 9 |
| Stbd. Engine | 10 |

| | |
|-----------------|----|
| Port Engine | 10 |
| Onan Generator | 10 |
| Chillers | 10 |
| CONTACTS | 11 |
| Contact details | 11 |
| Telephones | 11 |
| Office hours | 11 |
| Address | 11 |

SPECIFICATIONS

Basic Information

Category: Cruiser

Sub Category: Downeast

Model Year: 2000

Year Built: 2000

Country: United States

Vessel Top: 2363

Dimensions

LOA: 49' 0" (14.94m)

Beam: 16' 0" (4.88m)

Min Draft: 4' 4" (1.32m)

Speed, Capacities and Weight

Cruise Speed: 18 Kts. (21 MPH)

Cruise Speed RPM: 1800 Kts.

Max Speed: 30 Kts. (35 MPH)

Max Speed RPM: 2300 Kts.

Displacement: 44000 Pounds

Water Capacity: 176 Gallons

Holding Tank: 40 Gallons

Fuel Capacity: 775 Gallons

Accommodations

Total Cabins: 3

Total Berths: 4

Total Heads: 2

Hull and Deck Information

Hull Material: Fiberglass

Hull Configuration: Deep Vee

Engine Information

Engines: 2

Manufacturer: Caterpillar

Model: 3196TA

Engine Type: Inboard

Fuel Type: Diesel

PHOTOS

Cruising Comfortably



Starboard Side From Aft



Long Foredeck w/ Wide Walkarounds



Aft Cockpit



Helmstation



Helmstation Seating



TV for Entertainment Underway



Custom Table Top For Dining



Companion Seating on Stbd

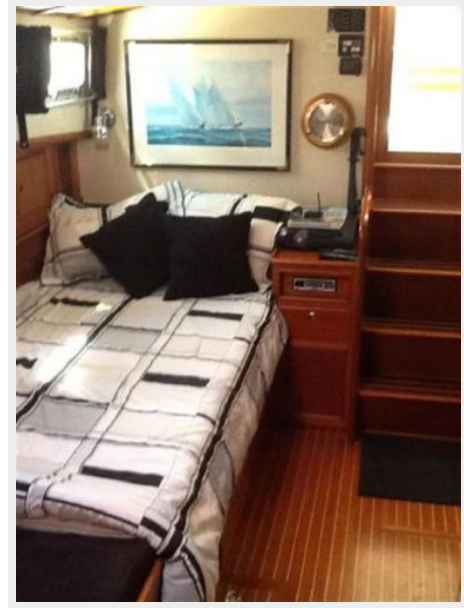


Entrance to Salon, Galley, and Berths



Removed Dining Settee for 3rd Berth

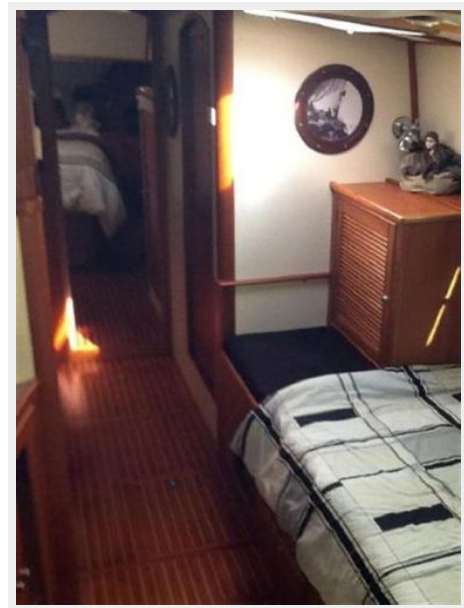
Spacious Galley



3rd Berth where lower Dinette Settee was



Companionway to Berthing Area



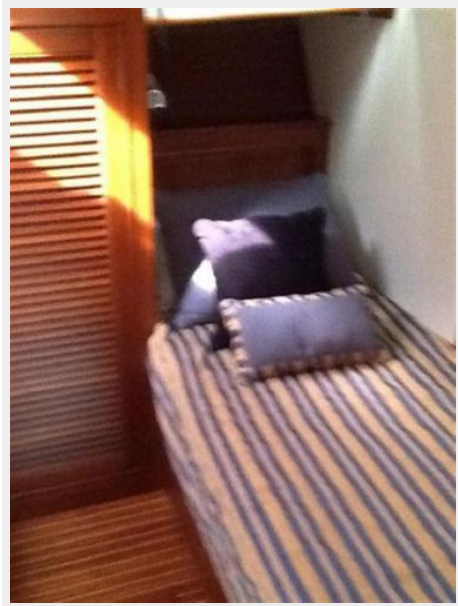
VIP Stateroom



VIP Single Berth



VIP Single Berth



Day Head or 2nd Head



Stbd. Engine



Port Engine



Onan Generator



Chillers



CONTACTS

Andrey Shestakov, leading yacht broker of the sales department of Shestakov Yacht Sales Inc. Shestakov Yacht Sales Inc., the official representative of the Miami/Fort Lauderdale FL headquarters.

Contact details

Email: **andrey@shestakovyachtsales.com**

Web: shestakovyachtsales.com/en/

Telephones

USA: +1(954)274-4435

Office hours

Monday – Saturday: **9:00 - 21:00** EDT

Sunday: **closed**

Address



Harbour Towne Marina, 850 NE 3rd St,
STE 213, Dania, FL 33004