

MR CHIPS — NEPTUNUS



Builder: NEPTUNUS

Year Built: 2001

Model: Motor Yacht

Price: PRICE ON APPLICATION

Location: United States

LOA: 70' 4" (21.44m)

Beam: 18' 11" (5.77m)

Min Draft: 5' 0" (1.52m)

Max Draft: 5' 2" (1.57m)

Cruise Speed: 23 Kts. (26 MPH)

Max Speed: 28 Kts. (32 MPH)

Our experienced yacht broker, Andrey Shestakov, will help you choose and buy a yacht that best suits your needs **MR CHIPS — NEPTUNUS** from our catalogue. Presently, at Shestakov Yacht Sales Inc., we have a wide variety of yachts available on our sale's list. We also work in close contact with all the big yacht manufacturers from all over the world.

If you would like to buy a yacht **MR CHIPS — NEPTUNUS** or would like help answering any questions concerning purchasing, selling or chartering a yacht, please call **+1(954)274-4435**

TABLE OF CONTENTS

TABLE OF CONTENTS	2
SPECIFICATIONS	7
Basic Information	7
Dimensions	7
Speed, Capacities and Weight	7
Accommodations	8
Hull and Deck Information	8
Engine Information	8
DETAILED INFORMATION	9
Vessel Walkthrough	9
Salon	9
Galley	10
Dining Area	11
Lower Helm	11
Companionway	12
Laundry Room	13
VIP Suite	13
VIP Head	13
Guest Cabin	14
Guest/Day Head	14
Master Cabin	14
Master Head	15
Forward Deck	16
Aft Deck	16
Hardtop Equipment	18
Arch Equipment	18
Flybridge Area	18
Flybridge Helm	19

Crew Cabin	20
Engine Room	21
Electrical	22
Comments	24
Exclusions	24
Exclusions	24
Disclaimer	25
PHOTOS	26
Salon Looking Aft	26
Salon Looking Forward	26
Salon Looking Starboard	26
Salon Dry Bar	26
Portside Salon Liquor Cabinet	27
Starboard Side Salon TV	27
Starboard Side Banquet	27
Galley to Port	27
Additional Galley Storage	27
Galley Banquet	27
Dining Area Helm	28
Dining Area	28
Lower Helm	28
Lower Helm	28
Companionway Upper	28
Companionway Electrical Panel	28
Companionway Lower	29
Laundry Room	29
VIP Looking Forward	29
VIP Looking Forward	29
VIP Looking Aft to Starboard	29

VIP Looking to Port	29
VIP Thruster, Batteries & Charger	30
VIP Head	30
Guest Cabin Looking Aft	30
Guest Cabin Looking Forward	30
Guest Head	30
Master Looking Aft to Port	30
Master Looking Aft to Starboard	31
Master Looking Forward	31
Master Walk In Locker	31
Master Head Looking to Port	31
Master Vanity	31
Master Jacuzzi Tub	31
Bow	32
Bow	32
Windlass Detail	32
Bow	32
Galley Side Deck Door	32
Walk Around Side Deck	32
Freshly Painted	33
Aft Deck	33
Aft Deck	33
Aft Deck to Port	33
Aft Deck Bar	33
Flybridge Steps	33
One of Two Aft Deck Docking Stations	34
Swim Platform Engine Room Door	34
Flybridge Looking Forward	34
Flybridge Looking Aft	34

Flybridge Seating	34
Flybridge Umbrella	34
Life Raft	35
Flybridge Looking Forward	35
Flybridge Bar	35
Three Stidd Helm Chairs	35
Helm	35
Helm	35
Portside Helm	36
Center Helm	36
Starboard Side Helm	36
New Stabilizer Controls	36
Crew Area	36
Crew Berth	36
Crew TV	37
Crew Head	37
Engine Room Looking Forward	37
Port Engine	37
Starboard Engine	37
Fuel System	37
Stabilizers	38
Stabilizers	38
Chillers & Generator	38
Workbench & Generator	38
Alternate Profile	38
Alternate Profile	38
Stern Quarter	39
Stern Quarter	39
Stainless Name	39

Neptunus	39
Layout	39
CONTACTS	40
Contact details	40
Telephones	40
Office hours	40
Address	40

SPECIFICATIONS

Basic Information

Category: Motor Yacht

Sub Category: Flybridge

Model Year: 2001

Year Built: 2001

Country: United States

Vessel Top: Hardtop

Fly Bridge: Yes

Dimensions

LOA: 70' 4" (21.44m)

LWL: 65' 4" (19.91m)

LOD: 74' 4" (22.66m)

Beam: 18' 11" (5.77m)

Min Draft: 5' 0" (1.52m)

Max Draft: 5' 2" (1.57m)

MFG Length: 74' 4" (22.66m)

Speed, Capacities and Weight

Cruise Speed: 23 Kts. (26 MPH)

Cruise Speed RPM: 2000 Kts.

Cruise Speed Range: 330

Max Speed: 28 Kts. (32 MPH)

Max Speed RPM: 2300 Kts.

Displacement: 100000 Pounds

Gross Tonnage: 50 Pounds

Water Capacity: 250 Gallons

Holding Tank: 185 Gallons

Fuel Capacity: 1400 Gallons

Accommodations

Total Cabins: 3

Total Berths: 4

Sleeps: 6

Total Heads: 4

Crew Cabin: 1

Crew Berths: 1

Crew Sleeps: 2

Crew Heads: 1

Hull and Deck Information

Hull Material: Fiberglass

Deck Material: Fiberglass

Hull Configuration: Semi Vee

Hull Color: white

Hull Finish: Aluminum

Hull Designer: F Mulder

Exterior Designer: Neptunus Yachts

Interior Designer: Destry Darr

Engine Information

Engines: 2

Manufacturer: MTU

Model: 12V2000

Engine Type: Inboard

Fuel Type: Diesel

DETAILED INFORMATION

Vessel Walkthrough

Even before boarding MR CHIPS the super shiny exterior hints at her recent refit which included a full repaint (12/13). MR CHIPS may be entered from either the swim platform on a floating dock or from midship boarding gates on her main deck via the wide walk around side decks.

The hydraulic swim platform holds her tender but allows easy boarding via port and starboard curved steps to the spacious Aft Deck. The Aft Deck offers both fixed and loose seating options. The Salon is entered via a sliding door. The area is very spacious due to the open plan layout including the Salon area, partial Galley bulkhead and Lower Station all the way forward.

All soft good are new and chosen and installed by noted yacht designer Destry Darr.

Steps forward lead down to three cabins each with its own private Head. The VIP is forward and the Master is amidship separated by a Guest Cabin.

The double berth Crew Cabin is entered via the swim platform door. The cabin is just aft of the Engine Room.

The Flybridge gives all weather navigation due to the hardtop and three side enclosure plus a great exterior Lounging Area.

Salon

The Salon is entered via the centerline sliding door and appears very spacious due to the open deck plan and spacious side deck windows. Immediately to port is a U shaped Ultra Leather settee newly recovered with storage below under most of the settee. The settee seats six and has a built in end table in the aft corner. Above the end table is a curved lacquered finish cabinet with an auto light and a mirrored interior containing liquor storage.

In front of the settee is a burlwood topped hi lo coffee table, 26" x 50". Table is teak and burlwood with maple inlay and a high gloss finish, new 11/13.

There are hidden rope lights around the perimeter of the settee for soft night accent lighting. The forward bulkhead is mirrored with a small burlwood shelf behind the curve of the settee. Behind the settee are the three oval porthole style windows that are typical of the larger Neptunus series of motoryachts of this era. Each window has a new Roman shade and an upholstered valance.

To the starboard side upon entering is the burlwood entertainment cabinet which consists of a Polaroid 26" LCD TV, a Sony DVD player and a cabinet above with a Pioneer 12 volt AM/FM/CD player, a Terrestrial TV antenna booster and a speaker volume control for the Aft Deck. In a cabinet next forward is the Raymarine Sat TV control box, plus CD and DVD storage.

Next forward are two newly reupholstered occasional chairs separated by a burlwood and a lacquer finish end table that has a pullout bar storage drawer. Atop is a table lamp. Behind each chair is additional storage via four cabinet doors.

The same three porthole type windows are above this area with Roman shades and valances to match those to port.

Also in the Salon is a soffit type AC delivery around the perimeter of the area, a soffit type ceiling detail with rope lighting over the coffee table, 11 halogen mini spots overhead, Alpine 2 Stage stereo speakers and a newly carpeted sole.

Galley

The Galley is next forward of the Salon. It is separated by a bulkhead to port that partially closes off the Salon just aft. The cabinets are finished in lacquer with a clear protective skin for durability.

Galley equipment includes:

"Golden Beach Light" granite countertops (new 11/13)

Double stainless steel under mount sink w/cover

Insinkerator garbage disposal

Grohe removable spray faucet

GE Profile burner Ceran top cook top (new 2013)

GE Profile Built in under counter oven

Frigidaire dishwasher

Jennair trash compactor

GE Profile stainless steel refrigerator

GE Profile built in over stovetop w/microwave oven/broiler

(9) Halogen mini spots

(15) Lacquered cabinet doors

Lacquered cabinet concealing a Black & Decker coffeemaker

"Amtico" laminate sole (new 2013)

(5) Under cabinet halogen mini spotlights

(3) Overhead halogen mini spotlights

Soffit w/rope lighting at the perimeter above

The area to the starboard side adjacent to the Galley is a great storage area and service banquet running eight feet fore and aft.

Storage includes six lacquered drawers and four cabinet doors that conceal extra dishes and Galley ware plus lots of household items.

The top is burlwood and above are four framed artwork pieces.

Next forward is a Pantograph side door that is very useful for loading the Galley or handling lines while running shorthanded from the lower controls.

Also in this area is a central vacuum outlet, a Phantom screen for the side door, a smoke detector and two overhead halogen mini spots.

Dining Area

Just forward of the Galley is the Dining Area. A handy pass through from the forward bulkhead of the Galley eases food delivery but also adds visibility to the Lower Control Station to starboard.

The Dinette is to port. The seating is U shaped Ultra Leather off the portside bulkhead on a raised platform for better visibility. The Dinette seats up to six and has storage below many of the cushions.

A pedestal table with storage in the pedestal lies in the center of the Dinette. The burlwood trimmed table folds out to be twice its usual size for dining. Large windows to forward and port offer plenty of natural lighting plus there are two halogen lights above. There is extra storage forward under the windshield. The sole of this area was newly carpeted.

Lower Helm

Next inboard is the Lower Helm area. It is compact but offers all the needed amenities for all weather cruising. The helm is centerline behind the three panel windshield.

Equipment includes:

Stainless steel helm wheel

Northstar 961 X D GPS plotter

(2) LCD MTU engine monitors

Furuno LCD remote radar screen

Raymarine ST60 digital depth

Raymarine ST60 digital speed

Robertson AP22 autopilot control head

Icom M127 VHF

MTU/Detroit Diesel station activation panel

MTU/Detroit Diesel electronic engine controls

Fireboy engine override panel

(6) Bilge pump switches w/indicator lights

(3) Digital bilge pump counters

(3) Windshield wiper controls w/washers

Start/stop buttons

KVH Tracphone handset

Bennett trim tab controls

Sidepower integrated bow & stern thruster controls

ACR RCL 100 searchlight controls

Cabinet for manuals

Ritchie 6" Powerdamp magnetic compass Acrylic plexiglass new corners for lower windshields

Companionway

The Companionway to the accommodations is to starboard opposite the Lower Station all the way forward on the main deck.

There are six steps to the first landing leading forward to the VIP, two more to the Guest Cabin to port and two more to the Master Cabin leading aft.

Two steps down from the top are two doors to the very efficiently designed Neptunus electrical panel. Just prior to entering the Master is the walk in Laundry Room with a separate Kenmore washer and dryer.

Each of the ten steps has its own LED step light and is newly carpeted.

Laundry Room

Opposite the Guest/Day Head in the Main Companionway and accessed by a burlwood door is a walk in Laundry Room with a Kenmore dryer and a Kenmore washer. The sole of this area is oak laminate. Four storage cabinets offer abundant storage with plenty of lighting overhead.

VIP Suite

All the way forward is the VIP Suite with a centerline queen size berth with rope lighting and two drawers beneath the berth. A newly upholstered headboard with valance type AC delivery is above the berth. Burlwood countertops port and starboard at the level of the berth serve as nightstands. Above each countertop is an opening stainless steel porthole covered by new drapes. Also in this area are stereo speakers and rope lighting behind the valance.

Above this area to port are seven lacquered finish cabinets with a brass reading light most forward.

Two newly carpeted steps in the hull side lead up to the berth on both the port and starboard side.

Aft to port is a double hanging locker with a cedar lining and auto light. Two drawers are below.

The aft bulkhead has three large storage cabinets and a built in 14" Toshiba flat panel TV with a built in DVD player.

On the starboard side of the cabin the nightstand shelf continues further aft and has extra storage cabinet above for a total of eight with two drawers below. Next aft is a full size double door hanging locker with cedar lining and auto light. The companionway leading aft but still within the suite has six more deep storage cabinets at eye level, the entrance to the VIP Head and two additional access hatches to bilge storage.

Also in the VIP Suite is an overhead Bomar deck hatch with an Ocean Air sliding screen and shade, a central vac outlet, digital AC controls, Vimar digital alarm clock, eight overhead halogen mini spots and an access hatch to the bow thruster area. All bedspreads, shams, upholstered headboard, curtains and valances were new 11/13.

VIP Head

The VIP Head is aft but within the suite. The bow front lacquered finish vanity has two cabinet doors below and an Avonite countertop with an under mount china sink and two tone fixtures above. Four mirrored hinged medicine cabinets are above the counter. The toilet is a Head Hunter Royal Flush full size model. The sole is Crema Marofil marble.

The stall shower has a clear tempered glass door, a light, exhaust fan and a handheld or wall mountable Grohe fixture.

Also in the Head are three halogen mini spots, a mirrored overhead and valance type AC delivery with rope lighting.

Guest Cabin

The Guest Cabin is next aft to port via the centerline Companionway. There are twin berths running fore and aft with a two drawer nightstand between. Newly upholstered headboards sit on a large mirrored panel with three halogen lights in the soffit above.

Below the berths are three drawers each facing inboard. Above the berth to both forward and outboard are eleven storage cabinets.

Next aft is a full size cedar lined auto lit hanging locker.

At the foot of the berth built into the aft bulkhead is a Sony 13" TV/VCR combo and a storage cabinet.

Furthest aft is the entrance to the Guest Head.

Also in this cabin is a digital AC control, a Vimar digital alarm clock, two stainless steel opening portholes with full drapes, rope lighting under the berths and behind the port hole valance, a central vacuum outlet and two stereo speakers. The horizontal surfaces and doors in the Guest Cabin are gloss burlwood. All bedspreads, shams, throw pillows, drapery, headboards and valances were new 11/13.

Guest/Day Head

The Guest Head is aft but within the suite. A second door from the main Companionway allows it to serve as a Day Head as well. The bow front lacquered finish vanity has two cabinet doors below and an Avonite countertop with an under mount china sink and two tone fixtures above. Two mirrored medicine cabinets are above the counter. The toilet is a Head Hunter Royal Flush full size model. The sole is Crema Marofil marble. There is an opening stainless steel porthole with a shade over the vanity.

The stall shower has a clear tempered glass door, a light, exhaust fan and a handheld or wall mountable Grohe fixture and a soap/shampoo dispenser.

Also in the Head are four halogen mini spots, a mirrored overhead and valance type AC delivery.

Master Cabin

Located amidship at the end of the Companionway in the widest part of the boat is the Master Suite. Entering from the burlwood door the king size berth is aft and centerline. The newly upholstered headboard is flanked by two curved backlit burlwood panels. Above the berth is a two level soffit with the upper level mirrored and having four halogen mini spots, two of which are reading lights.

Each side of the berth are two drawer nightstands with light switches and phone outlets built in.

At the foot of the berth is lacquered finish entertainment center with a built in 20" Haier LCD TV with DVD player and a Direct TV Sat receiver and two cabinets doors below.

To port starting forward is a vanity with a swing out stool, a centerline drawer and four large drawers, two forward and two aft. Above is a mirrored panel and further above two oversize stainless steel portholes covered by Roman shades. Next aft is a two door cedar lined auto lit hanging locker followed by a walk in closet with double hanging rods and a three door cabinet with three shelves and a shore rack. The entire closet is cedar lined, carpeted and is lit from above.

On the starboard side of the cabin is a lacquer finished chest of six storage drawers with a burlwood top. A mirrored panel and two opening stainless steel portholes behind Roman shades are above. Further aft is yet another double door, cedar lined auto lit hanging locker.

Next aft is the burlwood entry door to the Master Head.

Also in this cabin are rope lights under the berth built in cabinets and in the port and starboard AC delivery valances, a carbon monoxide detector, Vimar built in digital alarm clock, nine halogen mini spots and a central vac outlet. All bedspreads, shams, throw pillows, Roman shades, valances, headboard and vanity stool are new or were newly upholstered in 11/13.

Master Head

The Master Head is huge and probably not properly described by the word "Head". The sole is marble tile to match the countertops. The starboard side outboard vanity has six drawers and two mirrored cabinets flanking an opening stainless steel porthole covered with a Duette shade. Extending inboard the vanity has two double door bow front cabinets under each sink. The countertop is a very attractive granite. The China sinks are under mounted and the fixtures above are two tone. The area above the sinks is mirrored.

The toilet is a Head Hunter Royal Flush model. The tub/shower has a handheld or wall mountable Grohe fixture, an exhaust fan and lights. The tub/shower door is tempered glass. The tub itself is a Jacuzzi type tub.

The overhead is mirrored throughout. There are ten halogen mini spots, ample outlets and two tone fixtures.

Forward Deck

Fiberglass non skid decks

Raised bulwarks w/stainless steel bow rails

Bollard type cleats w/hawse holes

Recessed Maxell 3500 windlass w/fresh water wash down & up/down deck switches

Hinged cover over anchor gear for safety

Stainless steel anchor chute

Bruce 110 lb anchor w/all chain rode

Lewmar deck hatch to anchor locker

Sun cushions w/Stamoid cover (cover new 2/14)

Built in deck box on portside house

Port & starboard side midship boarding gates w/door & rail breaks

Starboard side Galley area entry door

Black Textulene windshield cover for forward & side windshields

Dual port & starboard bollard type springline cleats

International navigation lights

(4) Stainless steel framed oval cabin side windows port & (4) starboard

(3) Pantograph windshield wipers & washers

Delta T type Engine Room air intakes on side deck

Aft Deck

Fiberglass non skid deck

Trend stainless steel trimmed tinted glass sliding entry door

Aft Deck built in seating for four w/removable vinyl cushions & Stamoid cover (cover new 2/14)

Teak high gloss table w/maple inlay 30" x 58" w/dual stainless steel pedestal (table new 11/13)

Norcold Aft Deck refrigerator

Stainless steel under mount sink w/hot & cold taps

Portside storage cabinet w/Avonite countertop & stainless steel handrail

Trend stainless steel entry door

Stereo speakers

Starboard side fiberglass 10 tread steps to Flybridge deck each w/a step light

(6) Aft Deck overhead lights

(2) Pylaster area cabinets, each w/a set of clutches & throttles, bow & stern thrusters plus start/stop/control switches

(2) Bollard type Aft Deck cleats

Port & starboard side stainless steel hinged boarding gates from swim platform

(4) Curved fiberglass steps to swim platform starboard side

Integral fiberglass swim platform

Watertight door to Crew & Engine Room

Swim platform fresh water wash down

Swim platform hot & cold shower

(2) Stern cleats

Aft facing CCTV camera

(2) Stainless steel Boat Deck support poles

(2) Stainless steel hoop rails

Port & starboard 50 amp 220 volt cable master lockers

(2) Marineco cable TV/phone inlets

(5) LED step lights

Full beam hydraulic tender platform raises above deck level for heavy seas

(2) Clarion 2 stage stereo speakers

(2) Door storage cabinet in transom

Hardtop Equipment

ACR RCL 100 searchlight

Hailer horn

Large Bomar deck hatch for ventilation

Arch Equipment

Split walk thru fiberglass arch

6' Open array Furuno radar antenna

Raymarine Sat TV dome

Garmin GPS antenna

Raymarine GPS antenna

Northstar GPS antenna

Northstar digital GPS antenna

(3) VHF antennas

(2) Stereo speakers

(2) Stainless steel trimmed overhead lights

Flybridge Area

Fiberglass nonskid steps

C shaped seating to port w/removable cushions, storage below & cover (cover new 2/14)

Fiberglass table w/twin stainless steel base

Sun umbrella for table

Custom split walk thru radar arch

Marquipt 800 lb. davit

Stainless steel rail around aft Boat Deck perimeter

8 Man life raft chocked on deck w/hydro release (new 2013)

Fiberglass hardtop w/stainless steel supports & ventilation hatch

3 Side clear vinyl enclosure w/(4) U Zips by Sea King (new 2014)

(6) Overhead stainless steel trimmed lights on hardtop underside

(2) Folding resin deck chairs

EPIRB

Fiberglass wet bar w/a Raritan icemaker & storage cabinet plus a stainless steel sink & Miele cooktop under a hinged lid

Deck level courtesy lights

12 Volt Flybridge panel w/(30) breaker protected circuits & a digital volt & amp meter

120V GFCI outlet

Flybridge Helm

(3) Stidd helm chairs (newly recovered 2/14) (w/new covers 2/14)

Centerline helm w/burlwood panels

Raymarine E120 plotter/GPS/CCTV monitor

Furuno 72 mile Raster scan radar

(3) Wema fuel gauges

(2) MTU DDEC LCD gauge panels

Icom M127 VHF

Start/stop buttons & key switches

Side Power integrated bow & stern thruster controls

Simrad AP22 autopilot

Raymarine ST60 digital depth

Raymarine ST60 digital speed log

ACR Pointpad spotlight spotlight controls

Garmin GPS Map 4212 plotter

Fireboy engine override control panel

12 Volt outlet

Phase Linear UMP 400 AM/FM/CD receiver

Icom M304 VHF w/DSC

Bennett trim tab controls

MTU/DD electronic engine controls

MTU/DD station active control

Tinted stainless steel framed Venturi windscreen

Chart book/area w/hinged plexiglass cover

(2) Lucite drink holders

Intercom

Stereo speakers

MTU/DD emergency engine controls

(6) Bilge pump indicator lights

Windlass controls

Blower controls

Ritchie 5" magnetic compass

Windshield wiper on glass panel in front of helm Naiad stabilizer controls (new 2013) Helm cover (new 2/14)

Crew Cabin

Accessed via the swim platform door just aft of the Engine Room is the Crew Bunk Cabin two athwartships berths (one presently removed but available) off the starboard bulkhead. Each berth has two drawers and a storage cabinet below. Also in this area is a AM/FM/CD/radio, stereo speakers, digital AC control and an DVD player for the Element 22" HD LCD TV. The Crew Area has new Amtico vinyl flooring, new vinyl wall covering and new mica storage cabinets.

Just inside the door and adjacent to the two step entry ladder are port and starboard large storage lockers, large enough for a bicycle!

The Crew Head is to port and contains a vanity with a single cabinet door below stainless steel sink in an Mica countertop, two tone fixtures, a Raritan Atlantees electric head and a stall shower with a curved sliding door and a wall mountable or handheld fixture, a light, soap/shampoo dispenser and an exhaust fan. The sole is new Amtico vinyl.

Engine Room

4 Point oil xchanger - mains & generators

Freshwater spigot w/hose

Dual Sea Pro 300 fuel filters for each engine

Firebox FE 60 lb. 241 fire system

(2) Main engine CRS 3000 coolant recovery bottles

Cruise Air digital tempered water logic control box

Sea Star hydraulic steering reservoir

Aircep crankcase ventilation system

6 Step Marquipt Tide Ride ladder w/cork steps

Grafite shaft bonding brushes

Fiberglass wrapped exhaust, new 1/13 \$20,000 from Marine Exhaust, West Palm Beach

Central vacuum

(2) 1/2 HP 110V Engine Room blowers

(2) AC fluorescent lights

(4) DC incandescent lights

(2) Generator coolant recovery bottles

(2) 72,000 BTU Cruiseair chillers for chilled water AC system

Windlass breaker in forward bilge

(2) 30 Gallon Raritan hot water heaters in forward bilge

(2) Grundfos 110 volt house water pumps in forward bilge

Fuel tanks as follows:

540 gallons forward tank

430 gallons port tank

430 gallons stbd tank

(2) Jabsco fuel transfer pumps

Sea Star power steering

3" Main shafts replaced w/higher quality stainless steel

ZF 2050A 2.029 to 1 transmission ratios

Dripless shaft seals (new 2013)

(6) Rule bilge pumps

Sea Land macerator pump

Sleipner Side Power 20 hp 24 volt bow thruster

Sleipner Side Power 20 hp 24 volt stern thruster

(2) Racor 500 generator fuel filters

Workbench w/vise on top of port generator

Macerator pump with timer

Seven Step Marquipt Tide Ride ladder

Five step Marquipt vertical ladder

Fuel priming pump

CCTV Engine Room camera

Overhead rod storage for (4) rods

(2) Gas/water separators for generator Props & shafts removed & turned 9/13 **New Naiad stabilizer system model 254 7.5 sq. ft. fins w/2 year warranty starting 9/13**

Electrical

12/24 Volt DC electrical system

110/220 volt AC electrical system

25 KW Westerbeke Genset in sound cover, approx 2200 hours

25 KW Westerbeke Genset in sound cover, approx 2200 hours

(2) Blue Sea system battery cut off switch

Parallel for house & engine batteries

Parallel for bow thruster operating

Electric panel with:

(23) Breaker protected 240 volt double pole circuits

(60) Breaker protected 24 volt circuits

(48) Breaker protected 120 volt circuits

Digital DC volt & amp meter

(2) AC digital volt meters

(2) AC digital amp meters

Digital frequency meters

Generator start/stops for both generators

Water tank gauge at electrical panel

Waste tank gauge at electrical panel

Bilge pump alarm at electrical panel

Cruise Air digital control panel at electrical panel

Battery switch for bow thruster

(2) Galvanic isolators

(2) 50 amp Glendinning shore cord retractors w/brand new 65' shore cords

(2) 15KVA 50 amp isolation transformers

12 volt battery w/50 amp charge dedicated for Flybridge electronics at main deck area forward of Galley

Batteries as follows:

Eng (2) 4D 165 Ah (new 11/13)

House (4) 8 D 235 Ah Gell Cell (new 11/13)

(2) Group 27 generator start batteries (new 11/13)

Charles C Charger 24V 30 amp charger for bow thruster incl. (2) 4D Gel Cell batteries & a battery shutoff switch plus a DC hold light

Charles C Charger 15 amp 12 volt generator battery charger

Charles C Charger 30 amp 24 volt engine battery charger

(2) Mastervolt 24 volt 6000 inverter/charger

Comments

MR CHIPS represents a high volume 70' motoryacht with an excellent allocation of space. The Neptunus ride is legendary and MR CHIPS is no exception. T/2000 Series MTU's provide great cruising speeds. Twin generators provide all the power you will need. Great opportunity to move aboard and cruise! Major refit late 2013 included the following improvements: 1) Complete awlgrip repaint w/removal of all accessories \$98,000 2) New batteries \$ 6000 3) Aft Deck & Salon new teak tables \$10,000 4) New exterior canvas & enclosure \$12,000 5) New Flybridge \$ 6500 6) New life raft \$ 3500 7) Prop/shaft/bearing/seals \$ 8500 8) New Naiad stabilizers \$65,000 9) Interior refit of all soft goods bow to stern \$98,000

\$304,000 In addition the vessel was reflagged, USA and duty paid at time of importation.

Exclusions

While every effort was made to list all pertinent included equipment aboard MR CHIPS, there are some personal belongings aboard. Prospective purchasers should assume any item not specifically mentioned herein will not convey at closing. Named exclusions: RIB tender, scooter on Flybridge.

Exclusions

Owner's personal belongings.

Disclaimer

The Company offers the details of this vessel or yacht in good faith but cannot guarantee or warrant the accuracy of this information nor warrant the condition of the vessel. A buyer should instruct his representatives, agents, or his surveyors, to investigate such details as the buyer desires validated. This vessel or yacht is offered subject to prior sale, price change, or withdrawal without notice.

PHOTOS

Salon Looking Forward



Salon Looking Aft



Salon Looking Starboard



Salon Dry Bar



Starboard Side Salon TV



Portside Salon Liquor Cabinet



Galley to Port



Starboard Side Banquet



Additional Galley Storage



Galley Banquet



Dining Area



Dining Area Helm



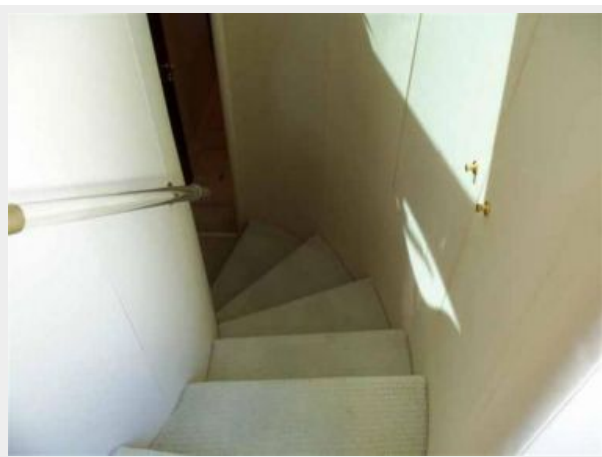
Lower Helm



Lower Helm



Companionway Upper



Companionway Electrical Panel



Companionway Lower



Laundry Room



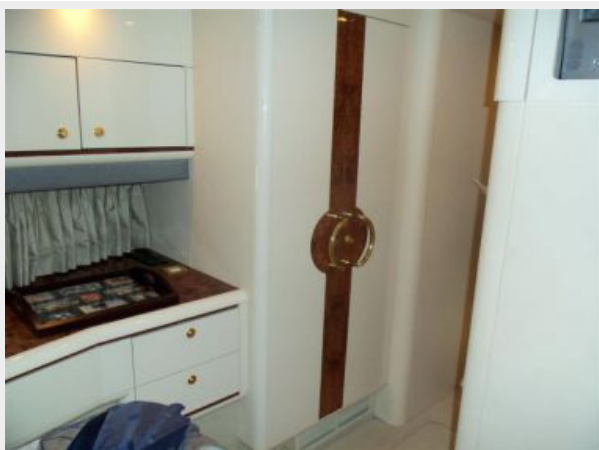
VIP Looking Forward



VIP Looking Forward



VIP Looking Aft to Starboard



VIP Looking to Port



VIP Thruster, Batteries & Charger



VIP Head



Guest Cabin Looking Forward



Guest Cabin Looking Aft



Guest Head



Master Looking Aft to Port



Master Looking Forward



Master Looking Aft to Starboard



Master Walk In Locker



Master Head Looking to Port



Master Vanity



Master Jacuzzi Tub



Bow



Bow



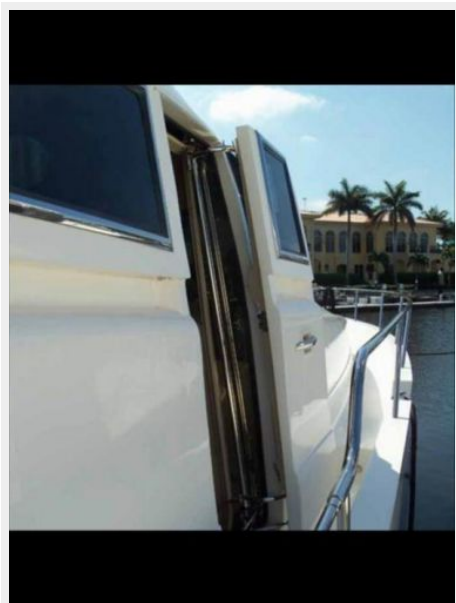
Windlass Detail



Bow



Galley Side Deck Door



Walk Around Side Deck



Freshly Painted



Aft Deck



Aft Deck



Aft Deck to Port



Aft Deck Bar



Flybridge Steps



One of Two Aft Deck Docking Stations



Swim Platform Engine Room Door



Flybridge Looking Forward



Flybridge Looking Aft



Flybridge Seating



Flybridge Umbrella



Life Raft



Flybridge Looking Forward



Flybridge Bar



Three Stidd Helm Chairs



Helm



Helm



Portside Helm



Center Helm



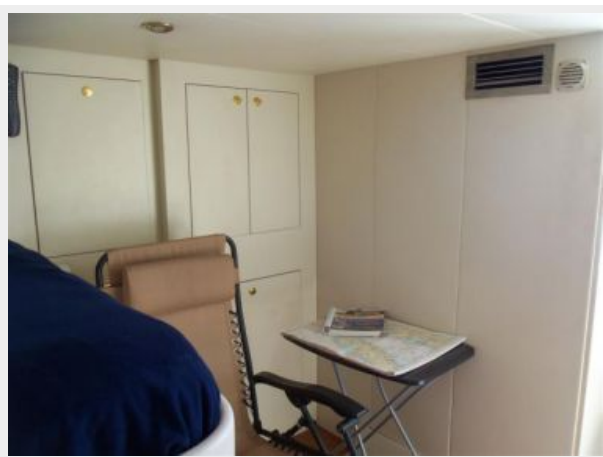
Starboard Side Helm



New Stabilizer Controls



Crew Area



Crew Berth



Crew TV



Crew Head



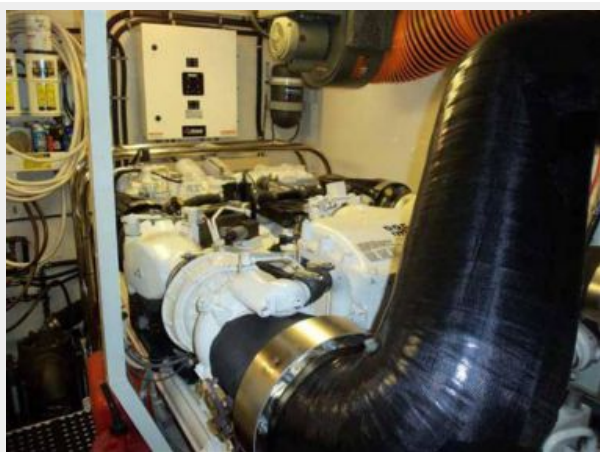
Engine Room Looking Forward



Port Engine



Starboard Engine



Fuel System



Stabilizers



Stabilizers



Chillers & Generator



Workbench & Generator



Alternate Profile



Alternate Profile



Stern Quarter



Stern Quarter



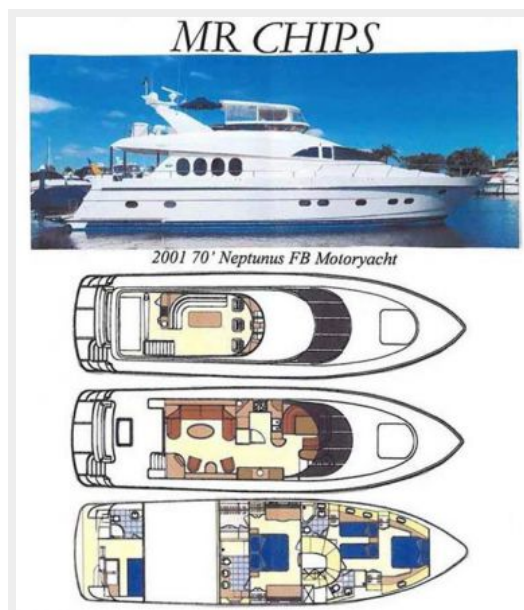
Stainless Name



Neptunus



Layout



CONTACTS

Andrey Shestakov, leading yacht broker of the sales department of Shestakov Yacht Sales Inc. Shestakov Yacht Sales Inc., the official representative of the Miami/Fort Lauderdale FL headquarters.

Contact details

Email: **andrey@shestakovyachtsales.com**

Web: shestakovyachtsales.com/en/

Telephones

USA: +1(954)274-4435

Office hours

Monday – Saturday: **9:00 - 21:00** EDT

Sunday: **closed**

Address



Harbour Towne Marina, 850 NE 3rd St,
STE 213, Dania, FL 33004