

32' SILVERTON 322 MOTORYACHT — SILVERTON



Builder: SILVERTON

LOA: 32' 0" (9.75m)

Year Built: 1999

Beam: 12' 4" (3.76m)

Model: Motor Yacht

Price: PRICE ON APPLICATION

Location: United States

Our experienced yacht broker, Andrey Shestakov, will help you choose and buy a yacht that best suits your needs 32' Silverton 322 Motoryacht — SILVERTON from our catalogue. Presently, at Shestakov Yacht Sales Inc., we have a wide variety of yachts available on our sale's list. We also work in close contact with all the big yacht manufacturers from all over the world.

If you would like to buy a yacht 32' Silverton 322 Motoryacht — SILVERTON or would like help answering any questions concerning purchasing, selling or chartering a yacht, please call +1(954)274-4435

TABLE OF CONTENTS

TABLE OF CONTENTS	2
SPECIFICATIONS	4
Overview	4
Basic Information	4
Dimensions	4
Speed, Capacities and Weight	4
Accommodations	4
Hull and Deck Information	4
Engine Information	5
DETAILED INFORMATION	6
Accommodations	6
Galley	6
Deck Equipment	6
Electrical Equipment	7
Electronics	7
Mechanical	7
Exclusions	7
Disclaimer	7
PHOTOS	9
PORT BOW FOREDECK	9
BOW	9
ANCHOR LOCKER	9
DECK LOOKING AFT	9
STARBOARD SIDE DECK TO FLYBRIDGE	10
PORT SIDE DECK TO FLYBRIDGE	10
HELM	10
HELM SEATING	10
FLYBRIDGE SEATING	10

AFT DECK	10
AFT DECK/ICE MAKER	11
AFT DECK/COMPANIONWAY	11
CUSTOM SS BOARDING LADDER	11
PORT SIDE AFT QUARTER	11
STERN VIEW	12
FORWARD STATEROOM BERTH	12
MAIN SALON	12
GALLEY	12
MAIN SALON LOOKING AFT	12
MAIN SALON STARBOARD DINETTE	12
MAN SALON PORT SETTEE	13
DINETTE	13
AFT STATEROOM QUEEN BERTH	13
AFT STATEROOM/TV	13
FORWARD HEAD COMPARTMENT	13
AFT HEAD COMPARTMENT	13
AFT HEAD SHOWER STALL	14
ELECTRIC PANEL	14
ENGINE ROOM	14
GENERATOR	14
ENGINE ROOM	15
INTERIOR LAYOUT DRAWING	15
CONTACTS	16
Contact details	16
Telephones	16
Office hours	16
Address	16

SPECIFICATIONS

Overview

Lightly used Silverton 322 MotorYacht with great livability at the dock, at anchor or underway.

Basic Information

Category: Motor Yacht

Model Year: 1999

Year Built: 1999

Country: United States

Vessel Top: 2353

Dimensions

LOA: 32' 0" (9.75m)

Beam: 12' 4" (3.76m)

Clearance: 13' 6" (4.11m)

Speed, Capacities and Weight

Displacement: 19716 Pounds

Water Capacity: 72 Gallons

Holding Tank: 49 Gallons

Fuel Capacity: 200 Gallons

Accommodations

Total Cabins: 2

Total Heads: 2

Hull and Deck Information

Hull Material: Fiberglass

Engine Information

Engines: 2

Manufacturer: Mercruiser

Model: 350 MAG MPI FWC

Engine Type: I/O

Fuel Type: Gas

DETAILED INFORMATION

Accommodations

Forward cabin with large athwartship double berth, cabinet and shelf to port, hanging locker to starboard.

Midship galley to port with forward head compartment opposite to starboard

Main salon has a full length convertible settee to port with a large dinette to starboard with table.

Owner's aft cabin has a queen size fore and aft berth to starboard, head compartment to port with separate shower stall and hanging lockers fore and aft.

ENTERTAINMENT CENTER SALON:

- Sharp TV/VCR
- Sony DVD Player
- Sony AM/FM/CD
- Digital TV Converter

OWNER'S AFT CABIN:

- Emerson Flat Panel TV w/DVD player

Galley

Midship L-shaped galley to port with excellent counter space and storage.

- Single molded sink w/pressure H&C water
- Two burner Princess stove top
- Norcold Ref/Fzr
- Gold Star Microwave

Deck Equipment

Easy access from the fly bridge to the fore deck with stairways port and starboard. Excellent seating on Fly Bridge with bench helm seat for four, two seats forward with a lift up tube between forward of helm. Stairway aft to the aft deck and to the swim platform.

- Custom SS boarding ladder designed for easy boarding from a fix dock
- Ground Tackle: S/L Electric Rev. Windlass w/controls fly bridge & fore deck Delta anchor on roller
- Two fenders w/ holders Two fenders aft

- New black Sunbrella bimini top w/full enclosure and full helm cover.
- Black Sunbrella windshield cover
- Aft deck factory hard top
- Single sink w/pressure cold water and cutting board on aft deck
- Molded swim platform w/swim ladder
- Swim platform H&C shower

Electrical Equipment

Two 120V/30Amp Shore Power Service w/50' Cords

- 5.8KW Kohler Generator
- Three batteries
- C-Charge 40 Amp Battery Charger

Electronics

FLYBRIDGE:

- Ritchie Compass
- Raymarine RayData Depth/Speed
- West Marine VHF-580

Mechanical

Twin FWC Mercruiser 350 MAG MPI engines w/515 Hours.

- Two zone Marineair Rev Cyc AC units
- U-Line Ice Maker on Aft Deck
- Full Engine Instruments on FB
- Trim Tabs

Exclusions

Owner's personal belongings.

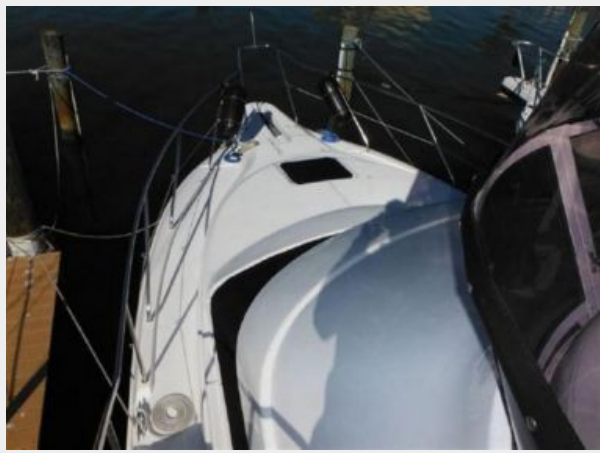
Disclaimer

The Company offers the details of this vessel or yacht in good faith but cannot guarantee or warrant the accuracy of this information nor warrant the condition of the vessel. A buyer should instruct his representatives, agents, or his surveyors, to investigate such details as the buyer

desires validated. This vessel or yacht is offered subject to prior sale, price change, or withdrawal without notice.

PHOTOS

PORT BOW FOREDECK



BOW



ANCHOR LOCKER



DECK LOOKING AFT



STARBOARD SIDE DECK TO FLYBRIDGE



PORT SIDE DECK TO FLYBRIDGE



HELM



HELM SEATING



FLYBRIDGE SEATING



AFT DECK



AFT DECK/ICE MAKER



AFT DECK/COMPANIONWAY



CUSTOM SS BOARDING LADDER



PORT SIDE AFT QUARTER



STERN VIEW



FORWARD STATEROOM BERTH



MAIN SALON



GALLEY



MAIN SALON LOOKING AFT



MAIN SALON STARBOARD DINETTE



MAN SALON PORT SETTEE



DINETTE



AFT STATEROOM QUEEN BERTH



AFT STATEROOM/TV



FORWARD HEAD COMPARTMENT



AFT HEAD COMPARTMENT



AFT HEAD SHOWER STALL



ELECTRIC PANEL



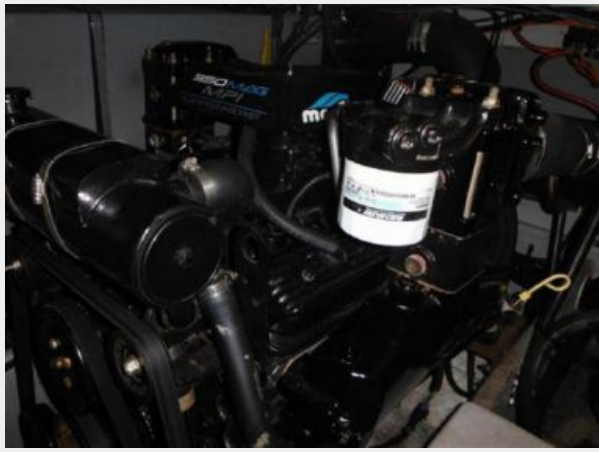
GENERATOR



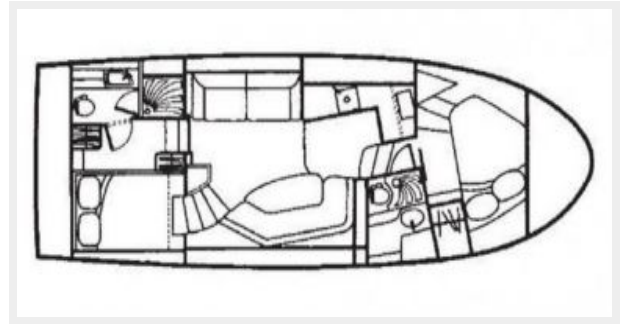
ENGINE ROOM



ENGINE ROOM



INTERIOR LAYOUT DRAWING



CONTACTS

Andrey Shestakov, leading yacht broker of the sales department of Shestakov Yacht Sales Inc. Shestakov Yacht Sales Inc., the official representative of the Miami/Fort Lauderdale FL headquarters.

Contact details

Email: andrey@shestakovyachtsales.com

Web: shestakovyachtsales.com/en/

Telephones

USA: +1(954)274-4435

Office hours

Monday – Saturday: **9:00 - 21:00** EDT

Sunday: **closed**

Address



Harbour Towne Marina, 850 NE 3rd St,
STE 213, Dania, FL 33004