

RICE QUARTERS — HATTERAS



Builder: HATTERAS

Year Built: 2002

Model: Motor Yacht

Price: PRICE ON APPLICATION

Location: United States

LOA: 100' 0" (30.48m)

Beam: 22' 0" (6.71m)

Max Draft: 6' 2" (1.88m)

Cruise Speed: 20 Kts. (23 MPH)

Max Speed: 23 Kts. (26 MPH)

Our experienced yacht broker, Andrey Shestakov, will help you choose and buy a yacht that best suits your needs **Rice Quarters — HATTERAS** from our catalogue. Presently, at Shestakov Yacht Sales Inc., we have a wide variety of yachts available on our sale's list. We also work in close contact with all the big yacht manufacturers from all over the world.

If you would like to buy a yacht **Rice Quarters — HATTERAS** or would like help answering any questions concerning purchasing, selling or chartering a yacht, please call **+1(954)274-4435**

TABLE OF CONTENTS

TABLE OF CONTENTS	2
SPECIFICATIONS	4
Overview	4
Basic Information	4
Dimensions	4
Speed, Capacities and Weight	5
Accommodations	5
Hull and Deck Information	5
Engine Information	5
DETAILED INFORMATION	6
Main Salon and Dining Area	6
Galley	6
Master Stateroom	6
VIP Stateroom	6
Two Queen Guest Staterooms - Port and Starboard	7
Crew Quarters	7
Deck	7
Main Helm	7
Engine Room and Electrical	8
Exclusions	8
Exclusions	8
Disclaimer	8
PHOTOS	10
CONTACTS	21
Contact details	21
Telephones	21
Office hours	21
Address	21

SPECIFICATIONS

Overview

Designed for the ultimate cruising experience, the Hatteras 100 Motor Yacht has been crafted for those who accept only the very best. With unparalleled craftsmanship and attention to every exquisite detail, Hatteras has created yachts of uncompromising elegance.

She has been lovingly maintained by her owner which is apparent throughout the vessel. She has a full-beam master stateroom with his/her ensuite that has both a shower and bath tub. There is a VIP stateroom forward with a beautiful shower that is finished in stone. Also, there are two guest staterooms both with twin berths and comfortable ensuite heads. On the main deck, around the corner from the dining area is a main deck day head and up forward is a spacious country kitchen. At the main helm, two KEP touch-screen marine displays were recently installed which make for state-of-the-art navigation with features including radar and satellite imaging directly over charts along with a Furuno NavNet TZ touchscreen display. With lots of features and a spacious layout this yacht is a private island at sea!

Basic Information

Category: Motor Yacht

Sub Category: Raised Pilothouse

Model Year: 2002

Year Built: 2002

Country: United States

Vessel Top: 2370

Fly Bridge: Yes

Dimensions

LOA: 100' 0" (30.48m)

Beam: 22' 0" (6.71m)

Max Draft: 6' 2" (1.88m)

Speed, Capacities and Weight

Cruise Speed: 20 Kts. (23 MPH)

Max Speed: 23 Kts. (26 MPH)

Water Capacity: 1500 Gallons

Holding Tank: 370 Gallons

Fuel Capacity: 5025 Gallons

Accommodations

Total Cabins: 4

Total Berths: 8

Total Heads: 5

Captain Cabin: True

Crew Cabin: 1

Crew Sleeps: 4

Crew Heads: 1

Hull and Deck Information

Hull Material: Fiberglass

Engine Information

Engines: 2

Manufacturer: MTU

Model: 16V2000

Engine Type: Inboard

Fuel Type: Diesel

DETAILED INFORMATION

Main Salon and Dining Area

The Main Salon is accessed from the aft deck door through an electric sliding door. Directly as you enter to port, is a bar with movable chairs. Hot and cold water sink, bottle storage, glass storage and pass thru window to the aft deck area. In a separate room forward of the entertainment area is the formal dining area. The port and starboard side deck double entry doors allow for both natural light and additional access into the main salon, with convenient access to the galley from the starboard or direct to the lower deck guest from the port side.

Galley

The main galley is forward of the main dining area and ideal for food preparation and serving. The ambient lighting is excellent due to the multiple windows and cherry blinds.

- Dual recessed stainless steel sinks
- Granite counter tops
- Microwave/convection oven
- Flat 4 burner stove
- Under counter digital oven
- Dishwasher, garbage disposal, trash compactor
- Refrigerator/freezer
- Mahogany cabinets, overhead and under counter lighting
- Granite center island
- Flat screen TV

Master Stateroom

"Full Beam Master" is situated mid-ships on the lower deck and features a king sized bed, side tables with drawers, carpet, overhead recessed lighting, Flat screen TV, and separate office area with desk top, six drawers and built in book case. The master also features his and hers heads.

- Walkin closets
- Port and starboard built in drawers
- Courtesy lighting

VIP Stateroom

The VIP stateroom is located in the bow and is accessed by a separate stairway off the breakfast area. This stateroom features a queen berth and has beautiful en-suite.

- Flat screen TV
- Overhead escape hatch
- Storage
- Closet

Two Queen Guest Staterooms - Port and Starboard

- One stateroom has the ability to be either two single berths, convertible to a queen, while the other stateroom is a true queen berth
- Both staterooms feature full en-suite heads and showers
- Both staterooms feature screen TV's plus stereo, DVD entertainment systems

Crew Quarters

- Large dinette with seating table
- Hard surface counter top with sink and storage
- Flat screen TV
- Stereo system
- Washer and dryer
- Captains cabin, double berth with hanging locker and full entertainment system, with en-suite head
- Crew cabin, twin over/under berths, and hanging locker

Deck

The deck layout offers a tak covered aft deck with stairs leading down to a large swim platform which also allows access to the crews quarters and engine room through a water tight centerline door. The side decks feature full walk around with over head lighting, and have hip high side bulworks with multiple access points with swing doors. The Flybridge features a centerline bar with built in bar stools.

- Wet bar with 4 fixed stools
- Refrigerator
- Twin port and starboard seating areas
- Twin helm seats
- Flybridge wing control stations port and starboard

Main Helm

The Raised Pilothouse features a large portion of the ships electrical; and navigational systems, in a comfortable and convenient surrounding. The pilothouse offers excellent visability for both

captain and crew, with an L-shaped settee and table directly behind the steering station. The pilothouse is accessed by an interior staircase on the starboard side.

Electronics follows:

- 2 ICOM IC-M604 VHF
- 3 Furuno General Displays
- 1 Raymarine Hybrid Touch
- 2 ACR Cibham PointPad URP-102
- 1 MMI-110
- 1 American Bow Thruster Control
- 1 Detroit Engine Monitor Panel
- 1 Simrad Auto Pilot AP-70
- 2 Detroit Diesel Electronic Control Monitors
- 1 Naiad Stabilizer Controls
- 2 KEP Computer Displays
- 1 Furuno NavNet TC-Touch

Engine Room and Electrical

- Multiple shore inlets and retrieval systems
- 240/120 volt AC electrical through main distribution panels and breaker panels
- 24/12 volt ship's battery systems
- Multi function interior lighting controls
- Under water lighting controls
- Under water light on transom
- Twin generators
- Air compressor

Exclusions

All artwork is excluded from the sale.

Exclusions

Owner's personal belongings.

Disclaimer

The Company offers the details of this vessel or yacht in good faith but cannot guarantee or warrant the accuracy of this information nor warrant the condition of the vessel. A buyer should instruct his representatives, agents, or his surveyors, to investigate such details as the buyer

desires validated. This vessel or yacht is offered subject to prior sale, price change, or withdrawal without notice.

PHOTOS





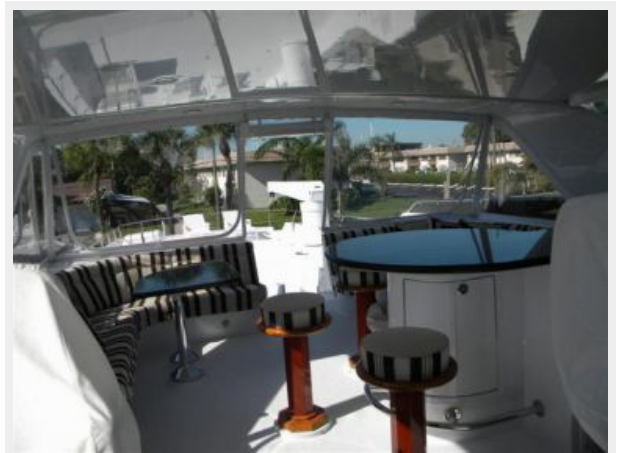




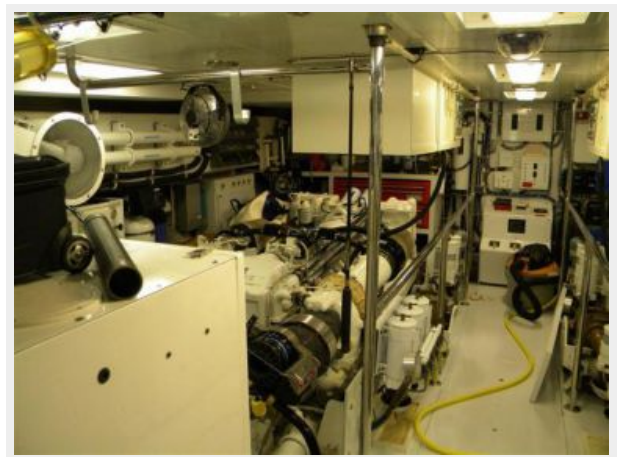


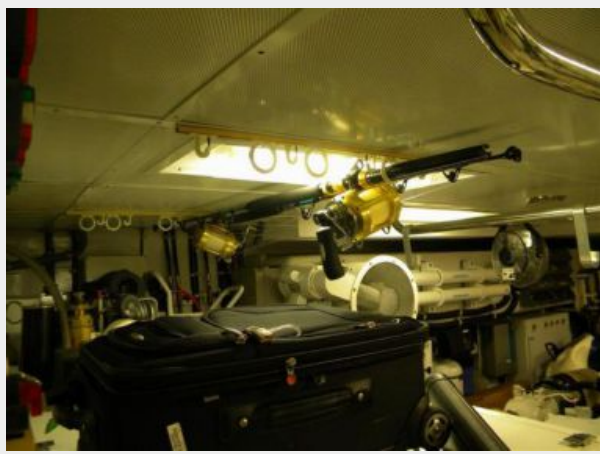












CONTACTS

Andrey Shestakov, leading yacht broker of the sales department of Shestakov Yacht Sales Inc. Shestakov Yacht Sales Inc., the official representative of the Miami/Fort Lauderdale FL headquarters.

Contact details

Email: andrey@shestakovyachtsales.com

Web: shestakovyachtsales.com/en/

Telephones

USA: +1(954)274-4435

Office hours

Monday – Saturday: **9:00 - 21:00** EDT

Sunday: **closed**

Address



Harbour Towne Marina, 850 NE 3rd St,
STE 213, Dania, FL 33004