

## LAURIE'S DAVIS — BUDDY DAVIS



**Судостроитель:** BUDDY DAVIS

**Год постройки:** 1999

**Модель:** Катер для спортивной рыбалки

**Цена:** ЦЕНА ЯХТЫ ПО ЗАПРОСУ

**Местонахождение:** United States

**Длина общая:** 52' 0" (15.85m)

**Ширина:** 16' 0" (4.88m)

**Макс. осадка:** 4' 0" (1.22m)

**Крейс. скорость:** 26 Kts. (30 MPH)

**Макс. скорость:** 30 Kts. (35 MPH)

Купить **Laurie's Davis — BUDDY DAVIS** а также выбрать подходящую вам яхту из нашего каталога яхт вам поможет опытный яхтенный брокер Андрей Шестаков. На сегодняшний день компания **Shestakov Yacht Sales Inc.** имеет большое количество яхт в собственном списке продаж, а также тесно сотрудничает со всеми крупными яхтенными производителями по всему миру.

Для того чтобы купить яхту **Laurie's Davis — BUDDY DAVIS** а также проконсультироваться по любому вопросу связанному с покупкой, продажей, чартером яхт позвоните по телефону **+7(918)465-66-44**.

# ОГЛАВЛЕНИЕ

---

ОГЛАВЛЕНИЕ	2
ХАРАКТЕРИСТИКИ	3
Основная информация	3
Размеры	3
Скорость, вместимость и масса	3
Размещение	3
Корпус и палуба	3
Информация о двигателе	4
ПОДРОБНОЕ ОПИСАНИЕ	5
Vessel Walkthrough	5
Исключения	9
Отказ от ответственности	9
ФОТОГРАФИИ	10
КОНТАКТЫ	15
Контактная информация	15
Телефоны	15
Время работы	15
Адрес	15

# ХАРАКТЕРИСТИКИ

## Основная информация

**Тип судна:** Катер для спортивной рыбалки

**Подкатегория:** Express

**Модельный год:** 1999

**Год постройки:** 1999

**Страна:** United States

**Открытая палуба мостика:** Да

**Кубрик:** Да

## Размеры

**Длина общая:** 52' 0" (15.85m)

**Ширина:** 16' 0" (4.88m)

**Макс. осадка:** 4' 0" (1.22m)

## Скорость, вместимость и масса

**Крейс. скорость:** 26 Kts. (30 MPH)

**Макс. скорость:** 30 Kts. (35 MPH)

**Водоизмещение:** 40000 Pounds

**Вместимость воды:** 100 Gallons

**Объем топливного бака:** 900 Gallons

## Размещение

**Всего кают:** 2

**Всего ком. состава:** 2

## Корпус и палуба

**Материал корпуса:** Fiberglass

---

## Информация о двигателе

---

**Двигатели:** 2

**Производитель:** Caterpillar

**Модель:** 3406

**Тип двигателя:** Inboard

**Тип топлива:** Diesel

---

# ПОДРОБНОЕ ОПИСАНИЕ

---

## Vessel Walkthrough

---

### Accommodations

The 52' Davis combines luxurious cruising amenities and a world-class offshore fishing platform, complete with a huge bow flare and sharp entry, for an extremely soft and dry ride.

Accommodations include a full-beam two-stateroom/ two head floor plan, a large tournament style cockpit, and a spacious air conditioned command bridge for entertaining.

### Master Stateroom

- Aft Of The Salon W/ Private Ensuite Head
- Queen Berth W/ Storage Compartments & Drawers Below
- Overhead Reading Lights
- Vinyl Headliner
- Vinyl Wall Coverings
- Custom Inner-Spring Mattress W/ Bed Cover, Throw Pillows & Pillow Shams

### Master Stateroom Head

- Private En-Suite Shower /Head
- Vanity W/ Mirrored Storage Cabinet Above & Below
- Exhaust Fan
- Fiberglass Shower Stall W/ Safety Glass Door
- Air Conditioning/ Heat Discharge Vent
- AC/DC Light Fixture

### Salon

The stairs down from the helm deck lead into the main cabin. The port side salon is directly across from the galley. Here you will find the large salon accented with beautiful maple cabinetry and burl wood inlays throughout.

- Port Side Ultra Leather Sofa W/ Storage Below
- Plush Carpeting W/ Runners
- Vinyl Headliner
- AC/DC Recessed Lighting W/ Dimmer Controls
- Overhead Maple Storage Cabinets

- In-Deck Storage Below W/ Lighting
- 42" Flat Screen TV
- Air Conditioning System W/ Digital Control
- Telephone Outlet
- Under Step Storage
- Main Electrical Panel

## Galley

- Starboard Side Across From Salon
- Custom Mirrored Back Splash
- Subzero Refrigerator & Subzero Freezer
- Microwave Oven
- Solid Surface Countertops
- 2-Burner Cook Top
- High Gloss Maple Cabinetry W/ Abundant Drawer & Cabinet Storage
- Exhaust Fan
- Maple Flooring
- Over Counter Task Lighting

## Guest Head

- Private Ensuite Entry From Stateroom
- Enclosed Fiberglass Shower Stall
- Wood Flooring
- Electric Head
- Corian Counter Tops & Sink
- Mirrored Vanity & Storage Cabinet
- Exhaust Fan
- Air Conditioning Vent

## Helm

A custom teak pod highlights the helm station accented with a teak sole and steps up from the cockpit. Guests will enjoy seating at either of the two L-shaped sofas, complete with table. There is a custom cabinet for the helm electronics, storage under the bench seats, engine room access from the cockpit, and excellent visibility from the helm pod. The helm deck has reverse air condition/heat and has a four-sided enclosure for excellent visibility from the bridge. There is a molded fiberglass cabinet forward portside that is equipped for additional storage.

- Custom Teak Helm Pod W/ Single Lever Controls & Cover

- Reverse Cycle Cruise Air A/C & Heat
- Polished Stainless Steering Wheel
- 2 Pompanette Teak Helm & Companion Chairs
- New (2014) Cushions for Helm seating
- DC Electrical Panel W/ Circuit Breakers
- Companionway Door Leading Below
- Custom Windshield W/ Commercial Wiper/Washer System
- Custom Electronics Console
- Molded Storage Cabinet Portside
- Wrap-Around Seating W/ Storage Under All-Weather Cushions
- Four-Sided Enclosure
- Caterpillar Engine Gauge Package
- Engine Synchronizer & Trolling Valves

## Electronics

- Furuno 72 Mile Radar
- 2/15 - Simrad AP-24 Autopilot
- Icom IC-M127 VHF Radio
- Simrad CX44 GPS
- Ocean Marine PC Chart Plotter/GPS
- Datamarine Speed and Distance Logs

## Engine Room & Mechanical

All mechanical systems were designed to exceed the standard of an offshore custom boat including the dual crash pumps, electronic engine control system, Sea Fire suppressant system, cockpit console freezer and live bait well, windshield with commercial grade wiper and washer system, battery monitoring system and air conditioning / heat system on the command bridge.

- Twin Caterpillar 3406 Diesels 800HP w/ 1740 hours (port) and 1747 hours (stbd) on 2/15
- 12/14 - Oil filters, fuel filters and zincs changed on engine and generator
- 12/14 - Changed oil and filter on starboard transmission
- 12/14 - Acid washed port and starboard raw water cooling system
- Command Bridge Air Conditioning
- Engine Block Heaters
- New (2014) Engine Room hoses
- Hydraulic Steering W/ Power Assist
- Emergency Crash Pumps (2)
- Quarter-Turn Sea Valves On Thru Hull Fittings
- Hot Water Heater

- Northern Lights Diesel Generator 146 Hours (on 2/15)
- Davis Custom Stainless Steel Rudders
- Engine Room Freshwater Outlet
- Port & Starboard Centralized Drainage System
- Racor Fuel Filters On Engines & Genset
- Coolant Recovery System On Genset & Mains
- Water Filtration System
- Stainless Steel Trim Tabs W/ Recessed Actuators
- High Gloss Imron Engine Room Paint Finish
- Dripless Shaft & Rudder Seals
- Thru-Cockpit Air Intakes
- Main Engine Start & Stop Switches
- Marine Engine Alternators
- Engine Room Vent Fans
- DC Oil Change System
- Three Inch Stainless Steel Shafts
- Automatic Fresh Water System W/ Back-Up Pump

## Electrical Systems

AC/DC main electrical panel with amperage and voltage metering, sliding gate shore/generator selector system generator remote and bilge pump control.

- 12/24 Volt Bridge Electrical Panel For Equipment & Electronics
- 120/240 VOLT 50 AMP Service
- Heavy Duty Marine Batteries Housed In A Fiberglass Box Maintained By A Fully-Automatic Battery Charger
- 12/2014 - (2) New 12V batteries AMG 8D
- Battery Parallel System
- AC and DC Fluorescent Engine Room Lighting
- 120 Volt GFI On Bridge
- Fresh Water & Fuel Tank Gauges
- Internal Bonding System W/ Zinc Anode Protection & Dynaplate Grounding
- AC & DC Lighting In Staterooms, Salon & Galley
- CABLE/TV/Phone Hook-Up

## Cockpit

The huge teak cockpit features a walk-through tuna door, a large transom fish box, teak cover boards & coaming, a molded tackle center with large freezer, live bait well, Pompanette 130 fighting chair and an engine room access door.

- Insulated Baitwell W/ Seawater Circulation Pump
- Built-In Insulated Transom Fish Box
- Large Walk-Through Tuna Door



- Engine Room Entrance From Cockpit
- High Volume Overboard Drains
- Dockside Water Inlet W/ Pressure Reducing Valve
- Pompanette 130 Fighting Chair
- Cold Box for Ice Maker
- Fresh & Saltwater Wash Down Systems
- Built In Tackle Center
- ICE SEA 800lb Ice Maker
- RUPP Outriggers
- Center Rigger
- Built In Backing Plate For Fighting

## Deck Equipment

- New (2014) Enclosure on side and back panel
- Teak Toe Rail
- Teak Helm Pod
- Teak Bridge Cap
- Teak Cockpit & Bridge Deck
- Teak Bow Pulpit W/ Stainless Steel Anchor Chute & Roller
- Lewmar Windlass W/ Forward Deck Foot Controls
- Stainless Steel Cleats (2) Stern, (4) Amidship, (2) Forward
- Stainless Steel Line Chocks (2)
- Stainless Steel Water Fill Deck Plate
- Davis Custom Stainless Steel Transom Corner Hawse Pipes
- Custom Stainless Steel Chaff Guards
- Solid Stock Stainless Steel Rub Rail Molding On Sheer & Hull Guards

## Исключения

---

При продаже яхты исключаются личные вещи владельца.

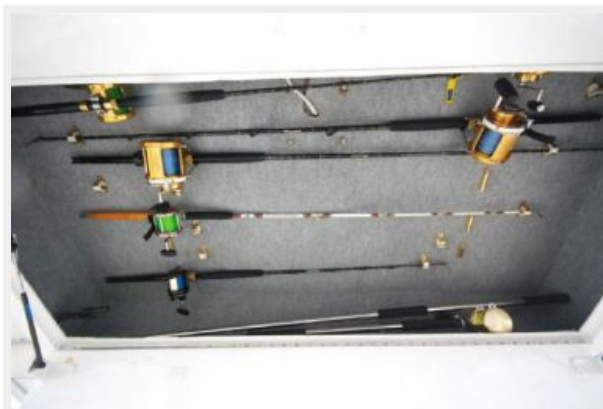
## Отказ от ответственности

---

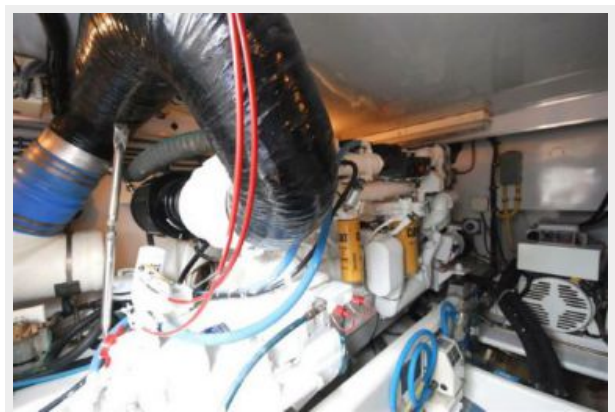
Компания предоставляет описание судна или яхты добросовестно, но не может гарантировать точность этой информации, а также не ручается за техническое состояние. Покупатель должен проинструктировать своих агентов или оценщиков исследовать представленную информацию более подробно, по собственному желанию. Продажа судна или яхты, изменение цены или снятие с продажи будет происходить без предварительного уведомления.

# ФОТОГРАФИИ











# КОНТАКТЫ

---

Андрей Шестаков (Andrey Shestakov) – ведущий яхтенный брокер отдела продаж яхт и судов компании Shestakov Yacht Sales Inc. Официальный представитель Shestakov Yacht Sales Inc. для русскоговорящих клиентов в центральном офисе компании в Майами/Форт Лодердейл/Флорида/США.

## Контактная информация

---

Email: [andrey@shestakovyachtsales.com](mailto:andrey@shestakovyachtsales.com)

Web: [shestakovyachtsales.com](http://shestakovyachtsales.com)

## Телефоны

---

Краснодарский край: **+7(918)465-66-44**

США, Майами, Флорида: **+1(954)274-4435**

## Время работы

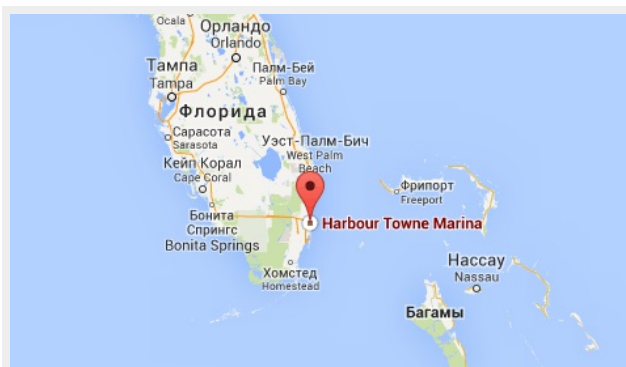
---

Понедельник – Суббота: **9:00 - 21:00**  
EDT

Воскресенье: **Закрито**

## Адрес

---



Harbour Towne Marina, 850 NE 3rd St,  
STE 213, Dania, FL 33004