

LAST CALL — WESTPORT



Builder: WESTPORT

Year Built: 1987

Model: Mega Yacht

Price: PRICE ON APPLICATION

Location: United States

LOA: 124' 0" (37.80m)

Beam: 24' 0" (7.32m)

Max Draft: 5' 5" (1.65m)

Our experienced yacht broker, Andrey Shestakov, will help you choose and buy a yacht that best suits your needs **LAST CALL — WESTPORT** from our catalogue. Presently, at Shestakov Yacht Sales Inc., we have a wide variety of yachts available on our sale's list. We also work in close contact with all the big yacht manufacturers from all over the world.

If you would like to buy a yacht **LAST CALL — WESTPORT** or would like help answering any questions concerning purchasing, selling or chartering a yacht, please call **+1(954)274-4435**

TABLE OF CONTENTS

TABLE OF CONTENTS	2
SPECIFICATIONS	5
Basic Information	5
Dimensions	5
Speed, Capacities and Weight	5
Accommodations	5
Hull and Deck Information	5
Engine Information	5
DETAILED INFORMATION	6
GALLEY	6
FORMAL DINING AREA	6
MAIN SALON	7
RAISED PILOTHOUSE	7
MEDIA ROOM	8
MEDIA ROOM HEAD	9
LOWER FORWARD COMPANIONWAY	9
GUEST EN SUITE CABIN FORWARD (STRBD)	9
GUEST EN SUITE HEAD FORWARD (STRBRD)	10
GUEST EN SUITE CABIN (PORT)	10
GUEST EN SUITE HEAD FORWARD (PORT)	10
LOWER MID COMPANIONWAY	11
MID VIP EN SUITE CABIN (STRBRD)	11
MID VIP EN SUITE HEAD (STRBD)	11
MID VIP EN SUITE CABIN (PORT)	12
MID VIP EN SUITE HEAD (PORT)	12
MASTER EN SUITE STATEROOM	12
MASTER EN SUITE HEAD	13
LAUNDRY ROOM	13

CREW QUARTERS	13
CREW QUARTERS HEAD	14
AFT DECK (MAIN DECK)	14
DAY HEAD	14
LOWER AFT / COCKPIT	15
DECK AND HULL	15
FOREDECK	15
HOT TUB	16
FLYBRIDGE	16
ELECTRONICS / NAVIGATION EQUIPMENT	16
BRIDGE MID SEATING AREA	17
BOAT DECK	17
AFT MACHINERY SPACE / LAZARETTE	18
ENGINE ROOM	19
GENERATORS	20
PUMP ROOM	21
Exclusions	22
Disclaimer	22
PHOTOS	23
Profile	23
Salon	23
Salon	23
Salon	23
Salon	23
Wet Bar	23
Formal Dining	23
Formal Dining	24
Galley	24
Galley	24
Matching Refrigerator / Freezer	24

Informal Dining	24
Raised Pilothouse	24
Pilothouse Helm	25
Pilothouse Helm	25
Pilothouse Stairs to Master and VIP Staterooms	25
Pilothouse Lookout Seating	25
Pilothouse Stairs to Master and VIP Staterooms	26
Media Room	26
Media Room	26
Master Stateroom En Suite	26
CONTACTS	36
Contact details	36
Telephones	36
Office hours	36
Address	36

SPECIFICATIONS

Basic Information

Category: Mega Yacht

Model Year: 1987

Year Built: 1987

Country: United States

Dimensions

LOA: 124' 0" (37.80m)

Beam: 24' 0" (7.32m)

Max Draft: 5' 5" (1.65m)

MFG Length: 118' 0" (35.97m)

Speed, Capacities and Weight

Max Speed RPM: 2300 Kts.

Water Capacity: 1028 Gallons

Fuel Capacity: 5230 Gallons

Accommodations

Total Cabins: 6

Total Heads: 7

Hull and Deck Information

Hull Material: Fiberglass

Engine Information

Engines: 2

Manufacturer: Detroit Diesel

Model: 12V92

Engine Type: Inboard

Fuel Type: Diesel

DETAILED INFORMATION

GALLEY

- Large Galley (strb) and Dinette (port) spread across full beam
- Dinette w/ L-shaped brown leather seating, storage drawers under, and granite table top
- Premium Koa shaded wood plank sole
- Granite counter top
- Double stainless steel sink with:

Drinking water spigot

Soap dispenser

Spigot/spray hose

Hot/cold faucet

- Garbage disposal
- Granite top Pass-thru to formal dining area w/ recessed lights above and storage cabinets on dining side
- Storage cabinets and drawers above and below counter
- Vinyl overhead w/ recessed lights and two recessed stereo speakers
- Fixed windows w/ Hunter Douglas shades and Burl wood veneer covered valances (port/strbrd)
- Side deck door (port/starboard)
- Pantry storage (strbd frwr)
- Viking Sub-Zero 601R refrigerator Sub-Zero 601F freezer
- Viking wine cooler
- Viking 5-burner stove w/ SS Oven
- SS Blower hood w/ lighting over stove-top
- LG microwave oven
- KitchenAid SS trash compactor
- Viking dishwasher
- Electric Hot water heater
- Galley power panel
- Marine Air AC control

FORMAL DINING AREA

- Located frwr of salon in same area
- Carpeted sole
- Vinyl overhead w/ recessed lights

- Window w/ Hunter Douglas shades and Burl wood veneer covered valances
- High gloss wood dining table w/ eight weaved high-back chairs
- Storage cabinets below pass-thru
- Artwork
- Sharp TV
- Denon AVR-891 receiver
- DirecTV HD receiver
- Samsung Blu-ray player

MAIN SALON

- Premium carpeting
- Large leather sectional sofa w/ three large throw pillows (strb)
- Designer coffee table
- Two (2) extra large leather occasional chairs w/ designer table between (strbd)
- Wet bar (to port) w/ granite counter top; round inset SS polished sink w/gooseneck faucet; premium wood plank sole; (2) SS fixed leather cushioned bar stools; drawers and cabinets; clear-front glass door Viking refrigerator; SS trash compactor, and large windows w/ Hunter Douglas shades and Burl wood veneer covered valances
- Vinyl overhead w/ recessed lights
- Four (4) overhead stereo speakers
- Fixed windows w/ Hunter Douglas shades and Burl wood veneer covered valances
- (2 port/ 2 strb)
- Opening windows w/ Hunter Douglas shades and Burl wood veneer covered valances
- (port/ strb)
- Tasteful Artwork
- Samsung television
- Two (2) MarineAir AC controls

RAISED PILOTHOUSE

- Up and forward of galley
- Premium shaded Koa wood plank sole
- Vinyl overhead w/ recessed lights
- Two (2) overhead stereo speakers
- SS framed (park bench style) dual helm bench seat
- Large Stainless steel steering wheel
- Large raised (2 steps up) Lookout bench (PH Aft) w/ two (2) fix SS granite top tables
- Portside spiral staircase down to Media room, guest staterooms, and Crew quarters
- PH aft (strbd) staircase up to bridge
- Ritchie compass
- Bow thruster control

- Twin Disc electronic controls
- Motorola cellular telephone
- KVH TracFone satellite phone
- MarineAir AC control
- Garmin GMI10 display ICOM IC-M602 VHF radio Furuno FA-150AIS
- Furuno GPS/WAAS navigator
- Furuno 120-mile radar
- Simrad AP20 autopilot
- Kahlenberg M-511 whistle control
- Rayline searchlight control
- Wesmar stabilizer control
- Samsung monitor to navigation computer
- Dell computer
- PMC man overboard strobe light
- PMC bilge status control panel
- PMC wiper status control panel
- PMC Alarm Annunciator
- PMC switch panel
- Brookes & Gatehouse Network Wind
- USCG Navigation Rules
- Orion flares, expiration February 2012
- Four type I life jackets Bridge inverter circuit panel Bridge 12-volt panel
- Trace Engineering monitor
- Two (2) MarineAir AC controls
- Bench seat, aft
- Two marble top tables
- Seven steps to bridge companionway

MEDIA ROOM

- Premium carpeted sole
- Vinyl overhead w/ sixteen (16) overhead recessed lights
- Custom fabric wall covering
- Two large leather sofas w/ designer throw pillows
- Two extra large leather ottomans
- Tasteful artwork
- Custom finished cabinetry w/ granite counter top, and clear-front glass door Viking refrigerator
- Windows w/ Hunter Douglas shades and Burl wood veneer covered valances (prt/strbrd)
- Panasonic telephone/intercom
- 60" TV monitor
- Philips DVD player; DirecTV; satellite receiver; Toshiba W607 VCR
- Marantz SR5400 receiver

- Aft mounted speakers
- Entry to crew quarters and egress
- Staircase to forward guest cabins

MEDIA ROOM HEAD

- Composite sole
- Custom wall covering
- Vinyl overhead w/ recessed lighting
- Granite top Vanity w/ framed mirror; under mounted sink; custom faucet and hardware
- Vacuflush head

LOWER FORWARD COMPANIONWAY

- Premium carpeted sole
- Custom vinyl wall covering
- Vinyl overhead w/ four (4) overhead recessed lights
- Storage cabinet w/ mirrored door, outboard
- Sub-Zero refrigerator
- 10-step access from media room to lower forward guest cabins

GUEST EN SUITE CABIN FORWARD (STRBD)

- Double berth w/ custom base and storage drawers under
- Accent lighting below berth base
- Nightstands w/ storage (port/strbd)
- Custom Bedding
- Custom finished Burl wood veneer cabinetry
- Cedar Lined hanging locker
- Portlight
- Premium carpeted sole
- Custom vinyl wall covering
- Vinyl overhead w/ recessed lights
- DirecTV satellite receiver
- Toshiba 18" TV
- Overhead speaker with volume control
- Air conditioning control
- Dry chemical fire extinguisher
- Central vacuum inlet
- Access to pump room
- Standard Horizon fathometer

GUEST EN SUITE HEAD FORWARD (STRBRD)

- Stone tile deck
- Finished Burl wood veneer cabinetry
- Granite top vanity w/ under mounted stainless steel sink; custom faucet and hardware
- Mirror and medicine cabinet w/ Portlight inside
- Stone shower enclosure w/ Grohe hardware; custom glass shower door
- and overhead light
- Linen locker
- Custom vinyl wall covering
- Vinyl covered overhead w/ recessed lighting
- Vacuflush head
- Blower vent

GUEST EN SUITE CABIN (PORT)

- Double berth w/ custom bedding
- Custom berth base w/ storage drawers and accent lighting
- Nightstand w/ storage
- Premium carpeted sole
- Vinyl overhead w/ recessed lighting
- Custom vinyl wall covering
- Cedar lined hanging locker
- Toshiba 18" TV
- Panasonic telephone/intercom
- Speaker overhead w/ volume control
- Air conditioning control panel
- Dry chemical fire extinguisher
- Central vacuum inlet

GUEST EN SUITE HEAD FORWARD (PORT)

- Stone tile deck
- Granite top vanity w/ under mounted stainless steel sink; custom faucet and hardware
- Finished Burl Wood veneer cabinetry
- Mirror and medicine cabinet w/ Portlight inside
- Stone shower enclosure w/ Grohe hardware; overhead light; custom glass shower door
- Linen locker
- Vacuflush head
- Custom Vinyl wall covering
- Custom Vinyl covered overhead w/ recessed lighting
- Blower vent

LOWER MID COMPANIONWAY

- Premium carpeted sole
- Custom vinyl overhead w/ recessed lighting
- Custom wall coverings
- Access to storage compartment
- Four steps to master stateroom
- Access to port and starboard guest cabins
- Laundry entry

MID VIP EN SUITE CABIN (STRBRD)

- Double island berth w/ custom headboard and accent lighting below berth base
- Custom bedding
- Fore and aft nightstands
- Tasteful Artwork
- Cedar lined hanging locker
- Finished wood veneer cabinetry (storage cabinets and drawers)
- Sliding window w/ Hunter Douglas shade
- Custom finished Burl wood veneer window valance
- Custom wall coverings
- Premium carpeted sole
- Vinyl overhead w/ recessed lighting
- Recessed overhead speaker with volume control
- Dry chemical fire extinguisher
- Toshiba 18" TV
- Air conditioning control
- Access to pump room
- Panasonic telephone/intercom

MID VIP EN SUITE HEAD (STRBD)

- Stone tile sole
- Custom granite vanity w/ storage; under mounted stainless steel sink and custom faucet
- Custom wall coverings
- Vinyl overhead w/recessed lighting
- Finished Burl wood veneer cabinetry
- Framed mirror and valance w/ two recessed lights
- Stone shower enclosure w/ custom glass front shower door and Grohe hardware
- Vacuflush head

MID VIP EN SUITE CABIN (PORT)

)

- Double island berth w/ custom headboard; bedding and artwork
- Accent lighting below berth base
- Matching nightstands
- Finished Burl wood veneer cabinetry and storage drawers
- Cedar lined hanging locker
- Sliding window with Hunter Douglas shade
- Custom window w/ Burl wood valance
- Vinyl overhead w/ recessed lights
- Custom wall coverings
- Premium carpeted sole
- Recessed overhead speaker with volume control
- Toshiba 18" TV
- Panasonic telephone/intercom
- Air conditioning control
- Dry chemical fire extinguisher

Access to pump room

MID VIP EN SUITE HEAD (PORT)

- Stone tile sole
- Custom granite vanity w/ storage; under mounted stainless steel sink and custom faucet
- Stone shower enclosure w/ overhead light; Grohe shower hardware; glass front and glass door
- Finished veneer cabinetry
- Framed mirror
- Custom valance w/ recessed lighting
- Vinyl overhead w/ recessed lighting
- Custom wall coverings
- Vacuflush head

MASTER EN SUITE STATEROOM

- Island berth w/ custom designer headboard, foot board and frame
- Nightstands (port/starboard)
- Built-in bureau with twelve drawers to port
- Settee w/ five throw pillows, starboard
- Walk-in closet w/ full-length mirror and porthole
- Cedar lined hanging locker w/ light

- Premium carpeted sole
- Vinyl overhead w/ recessed lighting and two stereo speakers
- Portholes (port/ strbd)
- Recessed soffit lights
- Sharp TV
- Emergency escape door to engine room
- MarineAir AC control
- Central vacuum inlet

MASTER EN SUITE HEAD

- Marble tiled sole
- Granite vanity counter w/ high polished stainless steel sink; designer hot and cold faucets
- Custom wood finished built-in cabinets above and below sink
- Jacuzzi tub w/ hand-held shower head; marble tile walls; overhead lighting
- Shower Stall w/ marble flooring; marble walls; glass front; glass door; recessed overhead lighting
- Vinyl overhead w/ recessed lighting
- Vacuflush head
- Blower

LAUNDRY ROOM

- Stone tile sole
- Custom vinyl overhead w/ overhead recessed lighting
- Portlight
- Woods freezer
- Miele stacked front load washer and dryer
- Full size freezer
- Large Port Hole w/ cover
- Storage Lockers

CREW QUARTERS

- Captain's berth w/ built-in wall shelves; storage drawers in base; privacy door; Sharp TV; DirecTV satellite receiver; Cyberhome DVD player
- Upper/lower berth
- Dressing mirror
- Carpeted sole
- Vinyl overhead w/ recessed lighting
- Two portlights

- Storage cabinet to port w/ Composite counter top
- Under mounted stainless steel sink and faucet
- Ceran 2-burner cooktop
- Central vacuum inlet
- Automatic bilge pump and high water sensors
- 2.5-lb 5BC Halon 1211 fire extinguisher
- Dry chemical fire extinguisher

CREW QUARTERS HEAD

- Vanity w/ composite counter
- High polished stainless steel sink and faucet
- Molded fiberglass shower w/ Bi-fold door; overhead light; flexible showerhead
- Medicine cabinet w/ mirrored doors
- Vinyl sole
- Vinyl overhead
- Vinyl wall covering
- Vacuflush head
- Bow thruster motor access

AFT DECK (MAIN DECK)

- Fiberglass non-skid deck w/ custom fit outdoor carpeting
- Hardtop with twelve recessed lights and two stereo speakers
- Corian wrap-around counter w/ polished stainless steel sink; hot/cold faucet, and drinking water faucet; icemaker, and storage cabinet to port
- Corner Corian counter w/ cabinets over and under to port w/ two Viking glass front refrigerators; Jenn-Air grill (w/ matching Corian flip-up top), and storage under
- Two fixed Corian tables w/ bench seats
- Polished stainless steel ladder w/ composite steps for bridge access
- Stainless steel safety rails at aft decks edge behind aft table
- Seven rod holders welded onto aft rail
- Dry chemical fire extinguisher

DAY HEAD

- Located and entered from aft deck
- Premium Carpeted sole
- Corian counter w/ storage under
- Stainless steel sink w/hot and cold faucets
- Two overhead recessed lights

- Vacuflush head
- Mirror
- Blower

LOWER AFT / COCKPIT

- Fiberglass Non-skid deck w/ custom fitted outdoor carpet
- Fixed fiberglass table w/ 4 bench seats
- Large full beam fiberglass swim platform w/ polished SS safety rails
- Engine room entrance
- Shower faucet, port and starboard

DECK AND HULL

- Fiberglass Non-skid decks
- Stainless Steel and chrome plated deck hardware
- Stockless anchor w/ approx 350' Chain
- Maxwell Windlass
- Canvas Covers for seating; helm; cabinets; tender, and wing stations
- Dual beam searchlight
- Three horn trumpets
- Navigation lights, port and starboard
- Stainless steel handrails on bulwarks
- Spring cleats, (2 port/ 2 strbrd)
- Boarding gates, port and starboard
- Diesel fill, (2 port/ 2 strbrd)

Overhead lighting on side decks

Water fill, starboard

Side deck doors to galley (port/ strbrd)

FOREDECK

- Fiberglass non-skid deck
- Stainless steel handrails on bulwarks
- Anchor roller
- Stockless anchor with approximately 350' of chain
- Maxwell anchor windlass with two deck switches
- Bowmar hatch to chain locker
- Step/seat at bow, port and starboard

- Two stereo speakers at bow
- Two courtesy lights at bow
- Bow cleats, port and starboard

HOT TUB

- Located on foredeck
- Two stereo speakers and four courtesy lights in hot tub base
- Two stereo speakers on forward superstructure
- Three steps on forward superstructure

FLYBRIDGE

- Fiberglass non-skid deck w/ custom fitted outdoor carpeting
- Tinted Windscreen
- Pompanette helm chair
- Front center console
- Steering Tiller
- Twin Disc engine controls
- Bow thruster control
- Garmin GPS Map 5212 GPS/plotter
- Northstar 6100i GPS/plotter/radar
- Engine gauges: RPM; GPH; Volts; Engine oil psi; Gear oil psi; Engine water temperature; Gear oil temperature
- Switches for: Engine start; Engine stop; Synchronizer; Stabilizer; Main computer; Auxiliary computer; Horn; Instrument lights; Alarm silence
- Robertson AP22 autopilot
- ICOM IC-M45 VHF radio
- Helm cover
- Wing stations (port/strbd) w/twin disc engine controls; steering job control; Simrad RI35 rudder angle indicator; Bow thruster control (starboard only), canvas covers
- Wrap-around port seating w/ fabric covered cushions; throw pillows; snap-on canvas covers; courtesy light; storage under; outdoor speakers in base
- Polished SS pedestal table w/ canvas cover
- Seating bench (strbd) w/ fabric cushions; storage under; canvas cover; courtesy lights, and speakers
- Clarion stereo remote control

ELECTRONICS / NAVIGATION EQUIPMENT

- Electric running and anchor lights

- ACR Searchlight
- Wesmar Hydraulic Bow Thruster
- Wesmar Stabilizer
- KVH Sat TV
- Ritchie Compass'
- Robertson AP20 AutoPilot
- Furuno 120 mile Northstar Radar
- Furuno GPS /WAAS - Northstar 6100i - Garmin GPS Map 5212
- ICOM IC-(M45 & M602) VHF's
- Garmin GPS Map w/ GMI10
- Antenna's: 2 radar; 4 GPS; 2 KVH Domes; 5 Stick Antenna's

BRIDGE MID SEATING AREA

- L-shaped seating w/ cushions and canvas covers
- Six stereo speakers
- Four courtesy lights
- Two single pedestal tables w/ covers
- 10-BC Halon fire extinguisher
- Wet bar, port, w/ Stainless steel sink; hot/cold faucet; Drinking water spigot; Franklin Chef commercial icemaker
- Starboard Cabinet w/ drawer and shelf storage
- Two Viking refrigerators
- Jenn-Air grill
- Radar Mast
- Two spreader lights
- Two floodlights
- Two KVH domes
- Two radar scanners
- Forward navigation light
- Anchor light
- Four GPS antennas
- Anemometer
- Five stick antennas

BOAT DECK

- Non-Skid Fiberglass deck
- Fully wrapped Stainless steel safety rails
- Vinyl covered stainless steel cable lifelines, aft
- Tender cradle, aft Tender chocks
- Hydraulic davit to port

- Two Avon 6-person life rafts
- Dunnage box
- Tide Ride ladder w/ cover
- Two (2) 24 inch life rings, port and starboard
- NAT SatFind 406 EPIRB
- Access to storage behind bridge seating area
- Badger dry chemical fire extinguisher
- Freshwater washdown

AFT MACHINERY SPACE / LAZARETTE

- Watertight engine room door
- Carpeted sole
- Painted overhead w/ 5 recessed lights
- Main engine fiberglass mufflers, port and starboard
- Two watermaker raw water pumps, seacock's, and strainers
- Two watermaker pre-filters
- Four scuba tanks and storage bracket
- Aqua Air AC control box
- Fire axe
- Discharge-of-oil-plaque
- Two 5lb Halon 1211 fire extinguishers
- Aluminum 5-step access steps
- CO2 engine room fire suppressant system
- Lazarette hot water circulation system
- Bauer dive tank compressor
- Sunroc water heater
- CO alarm
- Fire hose and stainless steel reel
- Seven type III life jackets
- Fire pump raw water seacock and strainer
- Six compartment lights with protective covers
- Charles ISOboost 100 transformer
- Electric fire pump
- Two fiberglass accumulator tanks
- Generator raw water seacock and strainer
- Auxiliary Northern Lights generator
- Racor 500 fuel filter for generator
- Rudder steering gear (prt/strb) w/ Flax packing; (2) Hydraulic steering cylinders; (2) Robertson rudder feedback units
- Six underwater lights
- Bait-well pump and seacock
- Shower sump, port

- Glendenning Cablemaster and storage bin
- Lazarette 12-volt D.C. panel

ENGINE ROOM

- Located under salon
- Twin Detroit Diesel / 12V92 (1987)
- Engine Serial Numbers: P12VF02355 /S12VF02384
- Kahlenberg Air Compressor
- Racor 1000 Fuel Filters
- Aqua Air chilled water type AC w/3 compressors
- Two 5lb Halon BC fire extinguishers
- Portlights (2 prt/ 2strb)
- Twelve (12) overhead compartment lights
- Exacon ventilation fans (prt/strb)
- Overhead heat sensors
- Two (2) Fuel tanks approx 1,790gl ea (prt/ strb frwd in engine room)
- Fuel tank sight gauges (prt/ strb)
- Wesmar hydraulic oil reservoir
- Generator muffler, starboard
- Racor 500 fuel filters to port and starboard generators
- Bow thruster and hydraulic stabilizer controls and manifold
- Engine room 12-volt D.C. panel (port forward of generator)
- Aluminum perforated overhead covering
- Fill-Rite fuel transfer pump and meter
- Husky central vacuum cleaner
- Wesmar stabilizer actuators (prt /strbd)
- Generator seacock and raw water strainer, port
- Port generator with auxiliary hydraulic system pump
- Ever Hot tankless water heater (electric) Hot water circulating pump
- Fiberglass muffler for port generator
- Twelve 12-volt batteries, port (flooded)
- Main engine fiberglass exhaust collectors (prt/strb)
- Battery switch for port main engine
- Battery switch for port generator
- Engine room inverter distribution panel
- 16-kilowatt automatic generator start panel
- #1 and #2 inverter system main disconnects
- Trace Engineering inverter #1
- Trace Engineering Inverter #2
- Ventilation dampers and ventilation fans, port and starboard aft
- A.C. distribution panel, port aft
- A.C. essential distribution panel, aft

- Newmar Phase Three PT-24-40 battery charger
- Five CO2 fire extinguisher dispersing heads
- Stainless steel workbench with vise
- Mac 11-drawer toolbox with full array of tools
- Flammable materials cabinet
- Fortress anchor and storage bag
- PMC Alarm Annunciator
- Generator controls for port, starboard, and auxiliary generators
- Generator hour meters:
 - • Port: 6,996.9 hours
 - • Auxiliary: 375.4 hours
 - • Starboard: 8,346.6 hours
- A.C. voltmeter
- Hertz voltmeter
- Two A.C. ammeters
- Aqua Air three compressor chilled water air conditioning system
- CCTV camera
- Two Sea Recovery Aqua Whisper watermakers
- Two (2) Lewco battery chargers
- Battery switch for starboard main engine
- Battery switch for starboard generator
- Battery switch for auxiliary generator
- Twelve 12-volt batteries, starboard outboard
- Five 12-volt batteries, port and starboard aft inside fiberglass boxes
- Air conditioning chilled water circulating pump
- Stainless steel 3" drive shafts
- PYI dripless shaft seals, port and starboard
- Main engine raw water supply seacock's and strainers, port and starboard
- Aluminum fresh oil tank, centerline
- Aluminum used oil tank, centerline
- Automatic bilge pump and high water sensor
- Black water tank discharge pump switch
- Black water tank, centerline
- Black water macerator pump and directional valves
- Pneumatic lube oil pump
- Lube oil change manifold
- Lube oil selector valve
- Seacock and raw water sea strainer for starboard generator
- Floscan fuel monitoring sensors, port and starboard
- Air conditioning raw water supply pump

GENERATORS

Port Generator:

- Northern Lights 55kW
- Racor 500 Fuel Filters

Strbrd Generator:

- Northern Lights 55kW
- Racor 500 Fuel Filter

Auxiliary Generator:

- Northern Lights 16kW
- Located Strbrd in Lazarette
- Racor 500 Fuel Filter
- Two (2) Lewco Battery Chargers / Newmar Phase Three PT-24-40

PUMP ROOM

- 5-lb Halon 1211 fire extinguisher, no tag
- Head distribution panel Seven head vacuum tanks Six compartment lights
- Pura freshwater filter with ultraviolet purification
- Three Sealand head pumps
- Two Wellmate water pressure tanks
- Ballast in polyethylene boxes, starboard outboard
- Two Headhunter Mach5 freshwater pumps
- Two 130-liter water heaters
- Two cold water loop freshwater filters
- Hot water circulating pump
- Freshwater pre pump filter
- Aluminum water tank with sight gauge (tagged 1,028 gallons) Water softener and salt container
- Aluminum fuel tanks (825 gallons each), port and starboard
- Kahlenberg air compressor
- Magna Sine inverter
- 12-volt distribution panel Inverter bypass disconnect Battery exhaust fan
- Battery switch
- Six 6-volt batteries
- Two 12-volt batteries

Exclusions

Owner's personal belongings.

Disclaimer

The Company offers the details of this vessel or yacht in good faith but cannot guarantee or warrant the accuracy of this information nor warrant the condition of the vessel. A buyer should instruct his representatives, agents, or his surveyors, to investigate such details as the buyer desires validated. This vessel or yacht is offered subject to prior sale, price change, or withdrawal without notice.

PHOTOS

Profile



Salon



Salon



Salon



Wet Bar



Formal Dining



Formal Dining



Galley



Galley



Matching Refrigerator / Freezer



Informal Dining



Raised Pilothouse



Pilothouse Helm



Pilothouse Helm



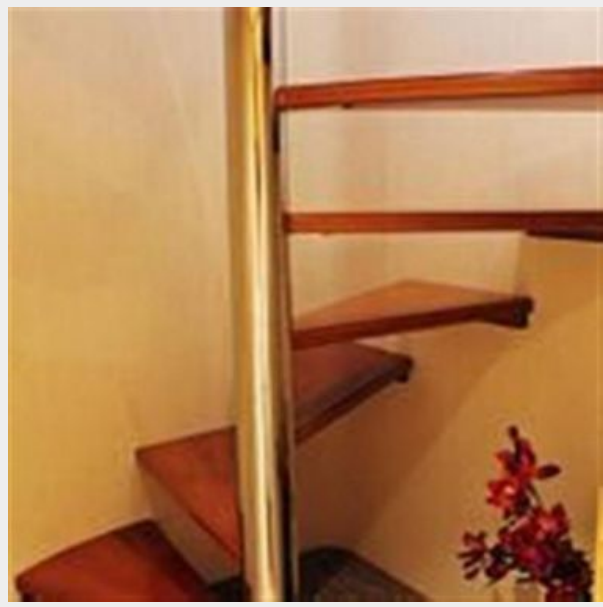
Pilothouse Lookout Seating



Pilothouse Stairs to Master and VIP Staterooms



Pilothouse Stairs to Master and VIP Staterooms



Media Room



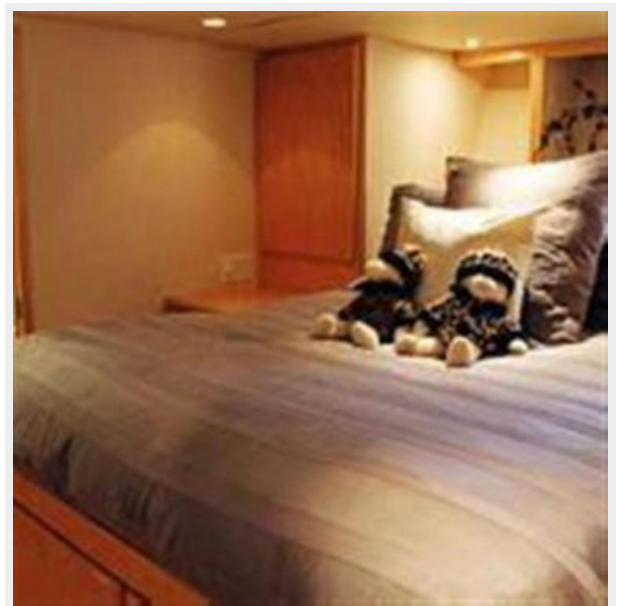
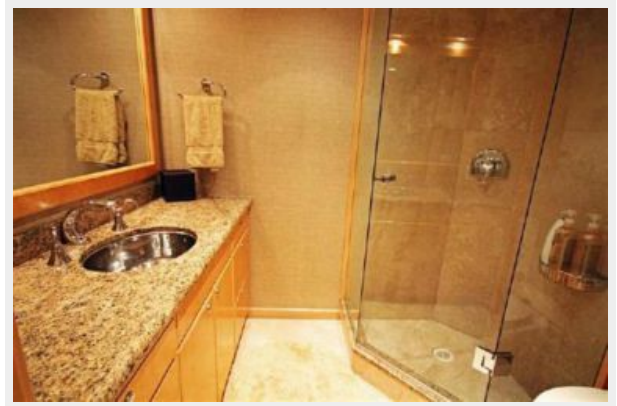
Media Room

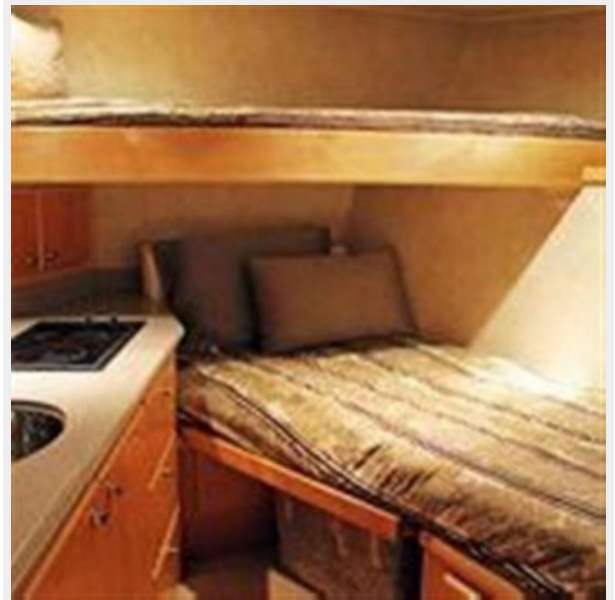


Master Stateroom En Suite







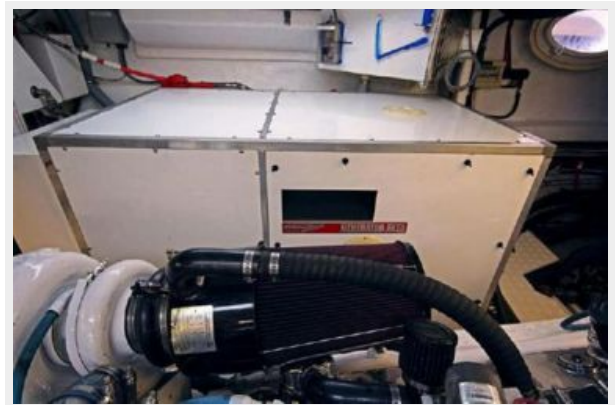














CONTACTS

Andrey Shestakov, leading yacht broker of the sales department of Shestakov Yacht Sales Inc. Shestakov Yacht Sales Inc., the official representative of the Miami/Fort Lauderdale FL headquarters.

Contact details

Email: andrey@shestakovyachtsales.com

Web: shestakovyachtsales.com/en/

Telephones

USA: +1(954)274-4435

Office hours

Monday – Saturday: **9:00 - 21:00** EDT

Sunday: **closed**

Address



Harbour Towne Marina, 850 NE 3rd St,
STE 213, Dania, FL 33004