

## MADMAX — LYMAN MORSE BOAT CO.



**Builder:** LYMAN MORSE BOAT CO.

**Year Built:** 2008

**Model:** Motor Yacht

**Price:** PRICE ON APPLICATION

**Location:** United States

**LOA:** 67' 0" (20.42m)

**Beam:** 18' 6" (5.64m)

**Min Draft:** 4' 2" (1.27m)

**Max Draft:** 4' 2" (1.27m)

**Cruise Speed:** 21 Kts. (24 MPH)

**Max Speed:** 26 Kts. (30 MPH)

Our experienced yacht broker, Andrey Shestakov, will help you choose and buy a yacht that best suits your needs **MadMax — LYMAN MORSE BOAT CO.** from our catalogue. Presently, at **Shestakov Yacht Sales Inc.**, we have a wide variety of yachts available on our sale's list. We also work in close contact with all the big yacht manufacturers from all over the world.

If you would like to buy a yacht **MadMax — LYMAN MORSE BOAT CO.** or would like help answering any questions concerning purchasing, selling or chartering a yacht, please call **+1(954)274-4435**

# TABLE OF CONTENTS

TABLE OF CONTENTS	2
SPECIFICATIONS	7
Overview	7
Basic Information	7
Dimensions	7
Speed, Capacities and Weight	7
Accommodations	8
Hull and Deck Information	8
Engine Information	8
DETAILED INFORMATION	9
67' Lyman-Morse Overview	9
67' Lyman-Morse Vessel Walkthrough	9
67' Lyman-Morse Accommodations	9
67' Lyman-Morse Salon	9
67' Lyman-Morse Galley	10
67' Lyman-Morse Dining	10
67' Lyman-Morse Pilothouse	10
67' Lyman-Morse Master Stateroom	10
67' Lyman-Morse Guest Stateroom	11
67' Lyman-Morse Laundry	11
67' Lyman-Morse Cockpit	11
67' Lyman-Morse Aftdeck	11
67' Lyman-Morse Flybridge	11
67' Lyman-Morse Audio/Visual Equipment	11
67' Lyman-Morse Electronics	12
67' Lyman-Morse Electrical System	12
67' Lyman-Morse Engine/Mechanical Equipment	13
67' Lyman-Morse Deck Equipment	14

67' Lyman-Morse Tender	15
67' Lyman-Morse Safety & Fire Protection	15
67' Lyman-Morse Exclusions	15
Exclusions	16
Disclaimer	16
PHOTOS	17
67' Lyman-Morse port profile	17
67' Lyman-Morse starboard profile	17
67' Lyman-Morse aft profile	17
67' Lyman-Morse port profile	17
67' Lyman-Morse anchor windlass	18
67' Lyman-Morse foredeck	18
67' Lyman-Morse foredeck aft	18
67' Lyman-Morse port side deck photo1	18
67' Lyman-Morse starboard side deck photo1	19
67' Lyman-Morse port side deck photo2	19
67' Lyman-Morse starboard side deck photo2	19
67' Lyman-Morse starboard side deck storage	19
67' Lyman-Morse swimplatform	20
67' Lyman-Morse cockpit	20
67' Lyman-Morse tender davit	20
67' Lyman-Morse aftdeck	20
67' Lyman-Morse aftdeck seating	20
67' Lyman-Morse aftdeck table	20
67' Lyman-Morse aftdeck BBQ grill	21
67' Lyman-Morse flybridge forward	21
67' Lyman-Morse flybridge aft	21
67' Lyman-Morse flybridge port	21
67' Lyman-Morse flybridge starboard	21

67' Lyman-Morse flybridge helm photo1	21
67' Lyman-Morse flybridge helm photo2	22
67' Lyman-Morse flybridge helmseats	22
67' Lyman-Morse flybridge seating	22
67' Lyman-Morse flybridge refrigerator	22
67' Lyman-Morse flybridge-pilothouse stairs	22
67' Lyman-Morse pilothouse forward	22
67' Lyman-Morse pilothouse aft	23
67' Lyman-Mose pilothouse port	23
67' Lyman-Morse pilothouse port forward	23
67' Lyman-Morse pilothouse starboard	23
67' Lyman-Morse pilothouse helm	23
67' Lyman-Morse pilothouse helm seat	23
67' Lyman-Morse pilothouse seating	24
67' Lyman-Morse pilothouse starboard aft	24
67' Lyman-Morse salon forward	24
67' Lyman-Morse salon aft	24
67' Lyman-Morse salon wine cooler	24
67' Lyman-Morse salon starboard	24
67' Lyman-Morse galley photo1	25
67' Lyman-Morse galley photo2	25
67' Lyman-Morse extra refrigeration	25
67' Lyman-Morse master stateroom	25
67' Lyman-Morse master stateroom starboard	25
67' Lyman-Morse master stateroom port	25
67' Lyman-Morse master stateroom forward	26
67' Lyman-Morse master stateroom vanity	26
67' Lyman-Morse master stateroom head	26
67' Lyman-Morse master stateroom shower	26

67' Lyman-Morse guest stateroom	26
67' Lyman-Morse guest stateroom port	26
67' Lyman-Morse guest stateroom starboard	27
67' Lyman-Morse guest stateroom aft	27
67' Lyman-Morse guest stateroom head	27
67' Lyman-Morse washer-dryer	27
67' Lyman-Morse built-in ironing board	28
67' Lyman-Morse engine room	28
67' Lyman-Morse port main engine	28
67' Lyman-Morse port gearbox	28
67' Lyman-Morse port Racor fuel filters	28
67' Lyman-Morse starboard main engine	28
67' Lyman-Morse starboard gearbox	29
67' Lyman-Morse starboard Racor fuel filters	29
67' Lyman-Morse fuel manifold	29
67' Lyman-Morse fuel polishing system	29
67' Lyman-Morse engine room Delta-T air filtration system	29
67' Lyman-Morse oil change system	29
67' Lyman-Morse fresh water system pumps	30
67' Lyman-Morse watermaker	30
67' Lyman-Morse pilothouse electrical panel	30
67' Lyman-Morse central vacuum system	30
67' Lyman-Morse salon electrical panel	31
67' Lyman-Morse generator panels	31
67' Lyman-Morse port generator sound box	31
67' Lyman-Morse port generator	31
67' Lyman-Morse port generator Racor fuel filters	32
67' Lyman-Morse starboard generator sound box	32
67' Lyman-Morse starboard generator Racor fuel filters	32

---

67' Lyman-Morse starboard generator	32
67' Lyman-Morse inverter-charger	33
67' Lyman-Morse lazarette	33
67' Lyman-Morse bilge hatch insulation	33
67' Lyman-Morse immaculate forward bilge	33
67' Lyman-Morse immaculate mid bilge	33
67' Lyman-Morse layout	33
<b>CONTACTS</b>	<b>34</b>
Contact details	34
Telephones	34
Office hours	34
Address	34

---

# SPECIFICATIONS

---

## Overview

---

MadMax is a classic styled 2008 flybridge cruiser in absolutely immaculate condition. Built by the famous Lyman-Morse Boatbuilding yard and designed by the very talented Doug Zurn, her fit and finish, systems and seaworthiness are among the very best. MadMax offers 2 staterooms, 4' draft, 21 knot cruise, CAT main engines and one of the most spectacular interiors I have ever come across. Check out the exquisite veneer patterns in the pictures in this brochure. She is maintained by her build captain and no expense has been spared in her maintenance. MadMax is truly a 10 out of 10! Price reduced!

## Basic Information

---

**Category:** Motor Yacht

**Sub Category:** Sedan Cruiser

**Model Year:** 2008

**Year Built:** 2008

**Country:** United States

**Vessel Top:** Radar Arch and Bimini

## Dimensions

---

**LOA:** 67' 0" (20.42m)

**LWL:** 57' 8" (17.58m)

**Beam:** 18' 6" (5.64m)

**Min Draft:** 4' 2" (1.27m)

**Max Draft:** 4' 2" (1.27m)

## Speed, Capacities and Weight

---

**Cruise Speed:** 21 Kts. (24 MPH)

**Max Speed:** 26 Kts. (30 MPH)

**Displacement:** 93250 Pounds

**Water Capacity:** 460 Gallons

**Holding Tank:** 227 Gallons

**Fuel Capacity:** 1760 Gallons

---

## Accommodations

---

**Total Cabins:** 2

**Total Berths:** 3

**Sleeps:** 6

**Total Heads:** 2

---

## Hull and Deck Information

---

**Hull Material:** Fiberglass

**Deck Material:** Fiberglass Sandwich

**Hull Configuration:** Modified V-Hull

**Hull Color:** Fighting Lady Yellow

**Hull Designer:** Doug Zurn

**Exterior Designer:** Doug Zurn

---

## Engine Information

---

**Engines:** 2

**Manufacturer:** Caterpillar

**Model:** C18

**Engine Type:** Inboard

**Fuel Type:** Diesel



---

## DETAILED INFORMATION

---

---

### 67' Lyman-Morse Overview

---

MadMax is a classic styled 2008 flybridge cruiser in absolutely immaculate condition. Built by the famous Lyman-Morse Boatbuilding yard and designed by the very talented Doug Zurn, her fit and finish, systems and seaworthiness are among the very best. MadMax offers 2 staterooms, 4' draft, 21 knot cruise, CAT main engines and one of the most spectacular interiors I have ever come across. Check out the exquisite veneer patterns in the pictures in this brochure. She is maintained by her build captain and no expense has been spared in her maintenance. MadMax is truly a 10 out of 10! Price reduced!

---

### 67' Lyman-Morse Vessel Walkthrough

---

Stepping aboard MadMax onto the swimplatform, you walk through a transom door into the cockpit and then step up onto the aftdeck. There are side decks on each side with stainless steel railings forward or a sliding door into the pilothouse. As you enter the pilothouse and her custom designed interior, you will find internal stairs to the flybridge starboard aft, wrap-around seating and a table port aft, a chart table and side deck access door port forward and a side deck access door and lower helm to starboard. Step down into the salon and you will find the galley to port and a sleeper sofa to starboard. The master stateroom entrance is aft and the guest stateroom entrance is forward. Engine room access is through a deck hatch in the aftdeck or through the lazarette hatch in the cockpit.

---

### 67' Lyman-Morse Accommodations

---

MadMax offers a full beam master stateroom aft with a centerline king size berth and ensuite head and a guest stateroom forward with a centerline queen size berth and ensuite head. There is a sleeper sofa in the salon and custom designed slide out child berths at the end of each guest berth.

The interior of the yacht is Red Birch with Cherry wood highlights in the joinery and Cherry wood soles. The exterior trim is teak.

---

### 67' Lyman-Morse Salon

---

The salon offers a sleeper sofa to starboard, storage cabinetry starboard forward, guest head port forward and the galley to port. There are three overhead deck hatches, 3 custom ventilation ducts and portlights for plenty of natural light and ventilation. There is a mechanical compartment below the salon with access through deck hatches.

---

## 67' Lyman-Morse Galley

---

The galley is located to port in the salon and offers a large countertop and three swing-out bar stools.

- Sub-Zero 700 BR under counter refrigerator
- Sub-Zero 700 BF under counter freezer
- Sub-Zero 700 BF under counter freezer in the mechanical compartment below the salon
- Sub-Zero wine cooler
- Wolf stainless steel oven and induction 4-burner cooktop and Gaggenau pop up vent
- Fisher & Paykel double drawer dishwasher
- In-Sink-Erator food waste disposer
- Jenn-Air trash compactor
- Zodiac countertop
- Storage cabinets and drawers
- Full complement of galley ware included

---

## 67' Lyman-Morse Dining

---

Interior dining space is available at the galley countertop with 3 bar stools, the pilothouse wrap-around seating and table and on the flybridge at the port aft seating and table. Alfresco dining is available at the 6 person teak dining table on the aftdeck.

---

## 67' Lyman-Morse Pilothouse

---

The pilothouse offers a helm starboard forward with a side deck access door, chart table with a Sub-Zero under-counter refrigerator and ice machine port forward, side deck access door to port, wrap-around seating and table port aft and internal flybridge stairs and cabinetry starboard aft. There are stairs centerline forward to the salon and a sliding door aft to the aftdeck. The helm offers a Stidd benchseat and full instrumentation described in the electronics section of this brochure. The side deck access doors are Pacific Coast Marine watertight doors and the aft door is a Freeman watertight door.

---

## 67' Lyman-Morse Master Stateroom

---

The master stateroom is located aft and offers a centerline king size berth, nightstands, cedar-lined hanging locker, storage drawers and cabinets, a vanity with mirror port forward, reading lights, 2 portlights and an ensuite head and shower.

---

## 67' Lyman-Morse Guest Stateroom

---

The guest stateroom is forward and offers a centerline queen size berth, nightstands, cedar-lined hanging locker, storage drawers and cabinets, overhead deck hatch and an ensuite head and shower.

---

## 67' Lyman-Morse Laundry

---

There is an Asko washer and separate Asko dryer in cabinetry starboard forward in the salon.

---

## 67' Lyman-Morse Cockpit

---

The large cockpit offers an integral, teak covered swimplatform, transom door, teak deck, teak cap rails, a sliding tender chock system, a fresh water shower and a Freeman deck hatch for access to the lazarette.

---

## 67' Lyman-Morse Aftdeck

---

The open aftdeck offers a built-in benchseat port forward, stainless steel BBQ grill starboard forward, teak deck, teak table with six director chairs, two umbrellas and three Freeman watertight hatches to the engine room.

---

## 67' Lyman-Morse Flybridge

---

The flybridge offers a bimini top with full Eisenglass enclosure, radar arch, non-skid deck, full helm forward, 2 Stidd helm seats, built-in, wrap-around seating with a teak table port aft, U-Line refrigerator with ice maker, storage and internal stairs to the pilothouse.

---

## 67' Lyman-Morse Audio/Visual Equipment

---

- KVH Tracvision M7 satellite TV system
- Sony Bravia flat screen TV in the salon and staterooms
- Inca fold down ceiling bracket for the salon TV
- DirecTV satellite TV receiver in the salon and staterooms

- JVC KD-AVX11 EXAD AM/FM/CD/DVD/Sat ready player in the salon and staterooms
- Alpine 4-channel power amplifier
- Infinity exterior speakers

---

## 67' Lyman-Morse Electronics

---

- Raymarine Radar
- KVH Tracphone V7 satellite telephone system
- Raymarine E120 Multi Function Displays at each helm
- Raymarine ST8002 SmartPilot autopilot at each helm
- Ritchie Powerdamp magnetic compass at each helm
- Furuno Universal FA-150 AIS transponder at the lower helm
- Icom IC-M504 VHF on the flybridge
- Icom Commandmic III Submersible Plus VHF remote on the flybridge
- Icom IC-M604 VHF at the lower helm
- Icom IC-M802 SSB at the lower helm
- Kahlenberg M-511c/d whistle control panel at the lower helm
- Sirius weather forecast system
- Exalto windshield wiper control panel at the lower helm
- Cell phone signal amplifier
- Secure wifi router
- East Coast and Bahamas electronic and paper chart inventory

---

## 67' Lyman-Morse Electrical System

---

- Northern Lights 25kW generator with 1554 hours
- Northern Lights 12kW generator with 1111 hours

- Dual Racor 75/500Max fuel filters for the generators
- Groco ARG-750-P sea strainers for the generators
- Mastervolt 4000 watt inverter
- Mastervolt Mass 100 amp 24vdc battery charger
- 2 X 200 amp 24vdc alternators
- Marine Switchgear Systems show power paralleling controller
- 2 X ProMariner ProSafe ZincSaver 60 systems
- Glendinning shore power cord system
- 2 X 50 amp shore cords
- Smart-Y 50amp/100amp shore power connector
- 6 X 8D AGM Lifeline house/inverter batteries (2013)
- 8 X Group 24 engine start batteries (2013)
- 4 X Group 24 generator start batteries (2013)
- 1 X Group 24 electronics emergency battery (2013)

## **67' Lyman-Morse Engine/Mechanical Equipment**

---

- Twin CAT C18 1001 hp main engines
- ZF 500 series gearboxes
- 2 X CAT engine monitor panels
- 2 X Maretron DSM250 systems monitor panels at each helm
- ZF SmartCommand electronic engine controls with remote on a lanyard
- Fuel manifold
- Dual Racor 75900Max fuel filters for main engines
- Reverso fuel polishing system
- Reverso oil change system
- Delta-T engine room air filtration system

- 
- Seastar hydraulic steering system
  - Groco ARG-3020 sea strainers
  - Marinair Systems reverse cycle air conditioning/heating system
  - 2 X Headhunter Mach5 fresh water pumps
  - Island Marine Spectra stabilizer system
  - Spurs line cutters
  - 12hp American Bow Thruster
  - Sea Recovery Aqua Whisper 1400 gpd watermaker
  - 2 X Seaward stainless steel 28 gallon water heaters
  - Spark-L-Pure water filtration system
  - Beam central vacuum system
  - Headhunter Royal Flush toilets
  - Tankwatch blackwater tank monitor panel
  - Workbench in the lazarette
  - Full complement of tools included
  - Spare parts inventory
  - Spare propellers

## **67' Lyman-Morse Deck Equipment**

---

- Maxwell 3500 anchor windlass with controls at each helm and a remote on a lanyard
- Maxwell 2200 winch starboard aft with foot control
- Lewmar 110lb claw anchor
- Fortress anchor
- Fresh water and raw water washdown forward and aft
- Starboard side deck storage
- 2 X foredeck storage lockers

- 
- 4 X stainless steel dorades
  - 5 X foredeck hatches
  - Electri-Chef stainless steel BBQ grill on the aftdeck
  - Spreader lights
  - Non-skid side decks and foredeck
  - Teak decks on the integral swimplatform, cockpit and aftdeck
  - Teak cap rails
  - Stainless steel rails forward
  - Stainless steel deck hardware
  - Full complement of exterior canvas covers
  - Window and windshield covers

## **67' Lyman-Morse Tender**

---

- 10'6" Novurania Williams 325 jet drive tender with 80 hp 4-cylce inboard engine
- Steelhead Marine SM 1500R tender davit

## **67' Lyman-Morse Safety & Fire Protection**

---

- Fireboy FE241 fire suppression system in the engine room, lazarette and mid bilge mechanical compartment
- Switlik 6 person liferaft
- Kahlenberg air horns
- Stern and engine room camera system
- Par and Rule bilge pumps and bilge high water alarms

## **67' Lyman-Morse Exclusions**

---

- Sellers' personal belongings

## Exclusions

---

Owner's personal belongings.

## Disclaimer

---

The Company offers the details of this vessel or yacht in good faith but cannot guarantee or warrant the accuracy of this information nor warrant the condition of the vessel. A buyer should instruct his representatives, agents, or his surveyors, to investigate such details as the buyer desires validated. This vessel or yacht is offered subject to prior sale, price change, or withdrawal without notice.



# PHOTOS

67' Lyman-Morse starboard profile



67' Lyman-Morse port profile



67' Lyman-Morse port profile



67' Lyman-Morse aft profile



**67' Lyman-Morse anchor windlass**



**67' Lyman-Morse foredeck**



**67' Lyman-Morse foredeck aft**



**67' Lyman-Morse port side deck photo1**



67' Lyman-Morse port side deck photo2



67' Lyman-Morse starboard side deck photo1



67' Lyman-Morse starboard side deck photo2



67' Lyman-Morse starboard side deck storage



**67' Lyman-Morse swimplatform**



**67' Lyman-Morse cockpit**



**67' Lyman-Morse tender davit**



**67' Lyman-Morse aftdeck**



**67' Lyman-Morse aftdeck seating**



**67' Lyman-Morse aftdeck table**



**67' Lyman-Morse aftdeck BBQ grill**



**67' Lyman-Morse flybridge forward**



**67' Lyman-Morse flybridge aft**



**67' Lyman-Morse flybridge port**



**67' Lyman-Morse flybridge starboard**



**67' Lyman-Morse flybridge helm photo1**



**67' Lyman-Morse flybridge helm photo2**



**67' Lyman-Morse flybridge helmseats**



**67' Lyman-Morse flybridge seating**



**67' Lyman-Morse flybridge refrigerator**



**67' Lyman-Morse flybridge-pilothouse stairs**



**67' Lyman-Morse pilothouse forward**



**67' Lyman-Morse pilothouse aft**



**67' Lyman-Morse pilothouse port**



**67' Lyman-Morse pilothouse port forward**



**67' Lyman-Morse pilothouse starboard**



**67' Lyman-Morse pilothouse helm**



**67' Lyman-Morse pilothouse helm seat**



**67' Lyman-Morse pilothouse seating**



**67' Lyman-Morse pilothouse starboard aft**



**67' Lyman-Morse salon forward**



**67' Lyman-Morse salon aft**



**67' Lyman-Morse salon starboard**



**67' Lyman-Morse salon wine cooler**





**67' Lyman-Morse galley photo1**



**67' Lyman-Morse galley photo2**



**67' Lyman-Morse extra refrigeration**



**67' Lyman-Morse master stateroom**



**67' Lyman-Morse master stateroom port**



**67' Lyman-Morse master stateroom starboard**



67' Lyman-Morse master stateroom forward



67' Lyman-Morse master stateroom vanity



67' Lyman-Morse master stateroom head



67' Lyman-Morse master stateroom shower



67' Lyman-Morse guest stateroom



67' Lyman-Morse guest stateroom port



**67' Lyman-Morse guest stateroom starboard**



**67' Lyman-Morse guest stateroom aft**



**67' Lyman-Morse guest stateroom head**



**67' Lyman-Morse washer-dryer**



**67' Lyman-Morse built-in ironing board**



**67' Lyman-Morse engine room**



**67' Lyman-Morse port main engine**



**67' Lyman-Morse port gearbox**



**67' Lyman-Morse port Racor fuel filters**



**67' Lyman-Morse starboard main engine**



**67' Lyman-Morse starboard gearbox**



**67' Lyman-Morse starboard Racor fuel filters**



**67' Lyman-Morse fuel manifold**



**67' Lyman-Morse fuel polishing system**



**67' Lyman-Morse oil change system**



**67' Lyman-Morse engine room Delta-T air filtration system**



67' Lyman-Morse fresh water system pumps



67' Lyman-Morse watermaker



67' Lyman-Morse pilothouse electrical panel



67' Lyman-Morse central vacuum system



### 67' Lyman-Morse salon electrical panel



### 67' Lyman-Morse generator panels



### 67' Lyman-Morse port generator sound box



### 67' Lyman-Morse port generator



67' Lyman-Morse port generator Racor fuel filters



67' Lyman-Morse starboard generator sound box



67' Lyman-Morse starboard generator



67' Lyman-Morse starboard generator Racor fuel filters





### 67' Lyman-Morse inverter-charger



### 67' Lyman-Morse lazarette



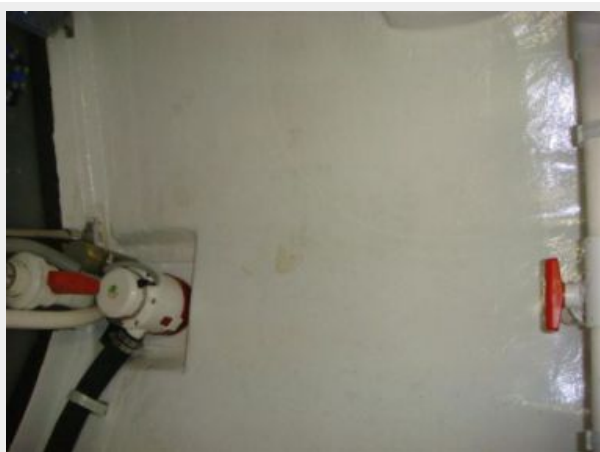
### 67' Lyman-Morse bilge hatch insulation



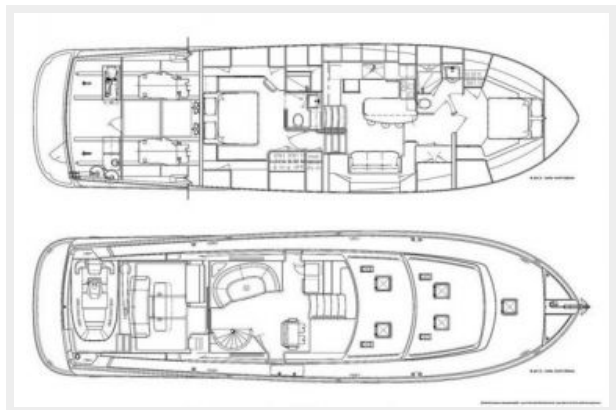
### 67' Lyman-Morse immaculate forward bilge



### 67' Lyman-Morse immaculate mid bilge



### 67' Lyman-Morse layout



---

# CONTACTS

---

Andrey Shestakov, leading yacht broker of the sales department of Shestakov Yacht Sales Inc. Shestakov Yacht Sales Inc., the official representative of the Miami/Fort Lauderdale FL headquarters.

---

## Contact details

---

Email: [andrey@shestakovyachtsales.com](mailto:andrey@shestakovyachtsales.com)

Web: [shestakovyachtsales.com/en/](http://shestakovyachtsales.com/en/)

---

## Telephones

---

USA: +1(954)274-4435

---

## Office hours

---

Monday – Saturday: **9:00 - 21:00** EDT

Sunday: **closed**

---

## Address

---



Harbour Towne Marina, 850 NE 3rd St,  
STE 213, Dania, FL 33004