

MADMAX — LYMAN MORSE BOAT CO.



Судостроитель:
LYMAN MORSE BOAT CO.

Год постройки: 2008

Модель: Моторная яхта

Цена: **ЦЕНА ЯХТЫ ПО ЗАПРОСУ**

Местонахождение: United States

Длина общая: 67' 0" (20.42m)

Ширина: 18' 6" (5.64m)

Мин. осадка: 4' 2" (1.27m)

Макс. осадка: 4' 2" (1.27m)

Крейс. скорость: 21 Kts. (24 MPH)

Макс. скорость: 26 Kts. (30 MPH)

Купить MadMax — LYMAN MORSE BOAT CO. а также выбрать подходящую вам яхту из нашего каталога яхт вам поможет опытный яхтенный брокер Андрей Шестаков. На сегодняшний день компания Shestakov Yacht Sales Inc. имеет большое количество яхт в собственном списке продаж, а также тесно сотрудничает со всеми крупными яхтенными производителями по всему миру.

Для того чтобы купить яхту MadMax — LYMAN MORSE BOAT CO. а также проконсультироваться по любому вопросу связанному с покупкой, продажей, чартером яхт позвоните по телефону **+7(918)465-66-44**.

ОГЛАВЛЕНИЕ

ОГЛАВЛЕНИЕ	2
ХАРАКТЕРИСТИКИ	7
Обзор	7
Основная информация	7
Размеры	7
Скорость, вместимость и масса	7
Размещение	8
Корпус и палуба	8
Информация о двигателе	8
ПОДРОБНОЕ ОПИСАНИЕ	9
67' Lyman-Morse Overview	9
67' Lyman-Morse Vessel Walkthrough	9
67' Lyman-Morse Accommodations	9
67' Lyman-Morse Salon	9
67' Lyman-Morse Galley	10
67' Lyman-Morse Dining	10
67' Lyman-Morse Pilothouse	10
67' Lyman-Morse Master Stateroom	10
67' Lyman-Morse Guest Stateroom	11
67' Lyman-Morse Laundry	11
67' Lyman-Morse Cockpit	11
67' Lyman-Morse Aftdeck	11
67' Lyman-Morse Flybridge	11
67' Lyman-Morse Audio/Visual Equipment	11
67' Lyman-Morse Electronics	12
67' Lyman-Morse Electrical System	12
67' Lyman-Morse Engine/Mechanical Equipment	13
67' Lyman-Morse Deck Equipment	14

67' Lyman-Morse Tender	15
67' Lyman-Morse Safety & Fire Protection	15
67' Lyman-Morse Exclusions	15
Исключения	16
Отказ от ответственности	16
ФОТОГРАФИИ	17
67' Lyman-Morse port profile	17
67' Lyman-Morse starboard profile	17
67' Lyman-Morse aft profile	17
67' Lyman-Morse port profile	17
67' Lyman-Morse anchor windlass	18
67' Lyman-Morse foredeck	18
67' Lyman-Morse foredeck aft	18
67' Lyman-Morse port side deck photo1	18
67' Lyman-Morse starboard side deck photo1	19
67' Lyman-Morse port side deck photo2	19
67' Lyman-Morse starboard side deck photo2	19
67' Lyman-Morse starboard side deck storage	19
67' Lyman-Morse swimplatform	20
67' Lyman-Morse cockpit	20
67' Lyman-Morse tender davit	20
67' Lyman-Morse aftdeck	20
67' Lyman-Morse aftdeck seating	20
67' Lyman-Morse aftdeck table	20
67' Lyman-Morse aftdeck BBQ grill	21
67' Lyman-Morse flybridge forward	21
67' Lyman-Morse flybridge aft	21
67' Lyman-Morse flybridge port	21
67' Lyman-Morse flybridge starboard	21

67' Lyman-Morse flybridge helm photo1	21
67' Lyman-Morse flybridge helm photo2	22
67' Lyman-Morse flybridge helmseats	22
67' Lyman-Morse flybridge seating	22
67' Lyman-Morse flybridge refrigerator	22
67' Lyman-Morse flybridge-pilothouse stairs	22
67' Lyman-Morse pilothouse forward	22
67' Lyman-Morse pilothouse aft	23
67' Lyman-Morse pilothouse port	23
67' Lyman-Morse pilothouse port forward	23
67' Lyman-Morse pilothouse starboard	23
67' Lyman-Morse pilothouse helm	23
67' Lyman-Morse pilothouse helm seat	23
67' Lyman-Morse pilothouse seating	24
67' Lyman-Morse pilothouse starboard aft	24
67' Lyman-Morse salon forward	24
67' Lyman-Morse salon aft	24
67' Lyman-Morse salon wine cooler	24
67' Lyman-Morse salon starboard	24
67' Lyman-Morse galley photo1	25
67' Lyman-Morse galley photo2	25
67' Lyman-Morse extra refrigeration	25
67' Lyman-Morse master stateroom	25
67' Lyman-Morse master stateroom starboard	25
67' Lyman-Morse master stateroom port	25
67' Lyman-Morse master stateroom forward	26
67' Lyman-Morse master stateroom vanity	26
67' Lyman-Morse master stateroom head	26
67' Lyman-Morse master stateroom shower	26

67' Lyman-Morse guest stateroom	26
67' Lyman-Morse guest stateroom port	26
67' Lyman-Morse guest stateroom starboard	27
67' Lyman-Morse guest stateroom aft	27
67' Lyman-Morse guest stateroom head	27
67' Lyman-Morse washer-dryer	27
67' Lyman-Morse built-in ironing board	28
67' Lyman-Morse engine room	28
67' Lyman-Morse port main engine	28
67' Lyman-Morse port gearbox	28
67' Lyman-Morse port Racor fuel filters	28
67' Lyman-Morse starboard main engine	28
67' Lyman-Morse starboard gearbox	29
67' Lyman-Morse starboard Racor fuel filters	29
67' Lyman-Morse fuel manifold	29
67' Lyman-Morse fuel polishing system	29
67' Lyman-Morse engine room Delta-T air filtration system	29
67' Lyman-Morse oil change system	29
67' Lyman-Morse fresh water system pumps	30
67' Lyman-Morse watermaker	30
67' Lyman-Morse pilothouse electrical panel	30
67' Lyman-Morse central vacuum system	30
67' Lyman-Morse salon electrical panel	31
67' Lyman-Morse generator panels	31
67' Lyman-Morse port generator sound box	31
67' Lyman-Morse port generator	31
67' Lyman-Morse port generator Racor fuel filters	32
67' Lyman-Morse starboard generator sound box	32
67' Lyman-Morse starboard generator Racor fuel filters	32

67' Lyman-Morse starboard generator	32
67' Lyman-Morse inverter-charger	33
67' Lyman-Morse lazarette	33
67' Lyman-Morse bilge hatch insulation	33
67' Lyman-Morse immaculate forward bilge	33
67' Lyman-Morse immaculate mid bilge	33
67' Lyman-Morse layout	33
КОНТАКТЫ	34
Контактная информация	34
Телефоны	34
Время работы	34
Адрес	34

ХАРАКТЕРИСТИКИ

Обзор

MadMax is a classic styled 2008 flybridge cruiser in absolutely immaculate condition. Built by the famous Lyman-Morse Boatbuilding yard and designed by the very talented Doug Zurn, her fit and finish, systems and seaworthiness are among the very best. MadMax offers 2 staterooms, 4' draft, 21 knot cruise, CAT main engines and one of the most spectacular interiors I have ever come across. Check out the exquisite veneer patterns in the pictures in this brochure. She is maintained by her build captain and no expense has been spared in her maintenance. MadMax is truly a 10 out of 10! Price reduced!

Основная информация

Тип судна: Моторная яхта	Подкатегория: Sedan Cruiser
Модельный год: 2008	Год постройки: 2008
Страна: United States	Верх: Radar Arch and Bimini

Размеры

Длина общая: 67' 0" (20.42m)	Длина по ватерлинии: 57' 8" (17.58m)
Ширина: 18' 6" (5.64m)	Мин. осадка: 4' 2" (1.27m)
Макс. осадка: 4' 2" (1.27m)	

Скорость, вместимость и масса

Крейс. скорость: 21 Kts. (24 MPH)	Макс. скорость: 26 Kts. (30 MPH)
Водоизмещение: 93250 Pounds	Вместимость воды: 460 Gallons
Вместимость сточного бака: 227 Gallons	Объем топливного бака: 1760 Gallons

Размещение

Всего кают: 2

Всего коек: 3

Спальные места: 6

Всего ком. состава: 2

Корпус и палуба

Материал корпуса: Fiberglass

Материал палубы: Fiberglass Sandwich

Комплектация корпуса: Modified V-Hull

Цвет корпуса: Fighting Lady Yellow

Дизайнер корпуса: Doug Zurn

Дизайнер экстерьера: Doug Zurn

Информация о двигателе

Двигатели: 2

Производитель: Caterpillar

Модель: C18

Тип двигателя: Inboard

Тип топлива: Diesel

ПОДРОБНОЕ ОПИСАНИЕ

67' Lyman-Morse Overview

MadMax is a classic styled 2008 flybridge cruiser in absolutely immaculate condition. Built by the famous Lyman-Morse Boatbuilding yard and designed by the very talented Doug Zurn, her fit and finish, systems and seaworthiness are among the very best. MadMax offers 2 staterooms, 4' draft, 21 knot cruise, CAT main engines and one of the most spectacular interiors I have ever come across. Check out the exquisite veneer patterns in the pictures in this brochure. She is maintained by her build captain and no expense has been spared in her maintenance. MadMax is truly a 10 out of 10! Price reduced!

67' Lyman-Morse Vessel Walkthrough

Stepping aboard MadMax onto the swimplatform, you walk through a transom door into the cockpit and then step up onto the aftdeck. There are side decks on each side with stainless steel railings forward or a sliding door into the pilothouse. As you enter the pilothouse and her custom designed interior, you will find internal stairs to the flybridge starboard aft, wrap-around seating and a table port aft, a chart table and side deck access door port forward and a side deck access door and lower helm to starboard. Step down into the salon and you will find the galley to port and a sleeper sofa to starboard. The master stateroom entrance is aft and the guest stateroom entrance is forward. Engine room access is through a deck hatch in the aftdeck or through the lazarette hatch in the cockpit.

67' Lyman-Morse Accommodations

MadMax offers a full beam master stateroom aft with a centerline king size berth and ensuite head and a guest stateroom forward with a centerline queen size berth and ensuite head. There is a sleeper sofa in the salon and custom designed slide out child berths at the end of each guest berth.

The interior of the yacht is Red Birch with Cherry wood highlights in the joinery and Cherry wood soles. The exterior trim is teak.

67' Lyman-Morse Salon

The salon offers a sleeper sofa to starboard, storage cabinetry starboard forward, guest head port forward and the galley to port. There are three overhead deck hatches, 3 custom ventilation ducts and portlights for plenty of natural light and ventilation. There is a mechanical compartment below the salon with access through deck hatches.

67' Lyman-Morse Galley

The galley is located to port in the salon and offers a large countertop and three swing-out bar stools.

- Sub-Zero 700 BR under counter refrigerator
- Sub-Zero 700 BF under counter freezer
- Sub-Zero 700 BF under counter freezer in the mechanical compartment below the salon
- Sub-Zero wine cooler
- Wolf stainless steel oven and induction 4-burner cooktop and Gaggenau pop up vent
- Fisher & Paykel double drawer dishwasher
- In-Sink-Erator food waste disposer
- Jenn-Air trash compactor
- Zodiac countertop
- Storage cabinets and drawers
- Full complement of galley ware included

67' Lyman-Morse Dining

Interior dining space is available at the galley countertop with 3 bar stools, the pilothouse wrap-around seating and table and on the flybridge at the port aft seating and table. Alfresco dining is available at the 6 person teak dining table on the aftdeck.

67' Lyman-Morse Pilothouse

The pilothouse offers a helm starboard forward with a side deck access door, chart table with a Sub-Zero under-counter refrigerator and ice machine port forward, side deck access door to port, wrap-around seating and table port aft and internal flybridge stairs and cabinetry starboard aft. There are stairs centerline forward to the salon and a sliding door aft to the aftdeck. The helm offers a Stidd benchseat and full instrumentation described in the electronics section of this brochure. The side deck access doors are Pacific Coast Marine watertight doors and the aft door is a Freeman watertight door.

67' Lyman-Morse Master Stateroom

The master stateroom is located aft and offers a centerline king size berth, nightstands, cedar-lined hanging locker, storage drawers and cabinets, a vanity with mirror port forward, reading lights, 2 portlights and an ensuite head and shower.

67' Lyman-Morse Guest Stateroom

The guest stateroom is forward and offers a centerline queen size berth, nightstands, cedar-lined hanging locker, storage drawers and cabinets, overhead deck hatch and an ensuite head and shower.

67' Lyman-Morse Laundry

There is an Asko washer and separate Asko dryer in cabinetry starboard forward in the salon.

67' Lyman-Morse Cockpit

The large cockpit offers an integral, teak covered swimplatform, transom door, teak deck, teak cap rails, a sliding tender chock system, a fresh water shower and a Freeman deck hatch for access to the lazarette.

67' Lyman-Morse Aftdeck

The open aftdeck offers a built-in benchseat port forward, stainless steel BBQ grill starboard forward, teak deck, teak table with six director chairs, two umbrellas and three Freeman watertight hatches to the engine room.

67' Lyman-Morse Flybridge

The flybridge offers a bimini top with full Eisenglass enclosure, radar arch, non-skid deck, full helm forward, 2 Stidd helm seats, built-in, wrap-around seating with a teak table port aft, U-Line refrigerator with ice maker, storage and internal stairs to the pilothouse.

67' Lyman-Morse Audio/Visual Equipment

- KVH Tracvision M7 satellite TV system
- Sony Bravia flat screen TV in the salon and staterooms
- Inca fold down ceiling bracket for the salon TV
- DirecTV satellite TV receiver in the salon and staterooms

- JVC KD-AVX11 EXAD AM/FM/CD/DVD/Sat ready player in the salon and staterooms
- Alpine 4-channel power amplifier
- Infinity exterior speakers

67' Lyman-Morse Electronics

- Raymarine Radar
- KVH Tracphone V7 satellite telephone system
- Raymarine E120 Multi Function Displays at each helm
- Raymarine ST8002 SmartPilot autopilot at each helm
- Ritchie Powerdamp magnetic compass at each helm
- Furuno Universal FA-150 AIS transponder at the lower helm
- Icom IC-M504 VHF on the flybridge
- Icom Commandmic III Submersible Plus VHF remote on the flybridge
- Icom IC-M604 VHF at the lower helm
- Icom IC-M802 SSB at the lower helm
- Kahlenberg M-511c/d whistle control panel at the lower helm
- Sirius weather forecast system
- Exalto windshield wiper control panel at the lower helm
- Cell phone signal amplifier
- Secure wifi router
- East Coast and Bahamas electronic and paper chart inventory

67' Lyman-Morse Electrical System

- Northern Lights 25kW generator with 1554 hours
- Northern Lights 12kW generator with 1111 hours

- Dual Racor 75/500Max fuel filters for the generators
- Groco ARG-750-P sea strainers for the generators
- Mastervolt 4000 watt inverter
- Mastervolt Mass 100 amp 24vdc battery charger
- 2 X 200 amp 24vdc alternators
- Marine Switchgear Systems show power paralleling controller
- 2 X ProMariner ProSafe ZincSaver 60 systems
- Glendinning shore power cord system
- 2 X 50 amp shore cords
- Smart-Y 50amp/100amp shore power connector
- 6 X 8D AGM Lifeline house/inverter batteries (2013)
- 8 X Group 24 engine start batteries (2013)
- 4 X Group 24 generator start batteries (2013)
- 1 X Group 24 electronics emergency battery (2013)

67' Lyman-Morse Engine/Mechanical Equipment

- Twin CAT C18 1001 hp main engines
- ZF 500 series gearboxes
- 2 X CAT engine monitor panels
- 2 X Maretron DSM250 systems monitor panels at each helm
- ZF SmartCommand electronic engine controls with remote on a lanyard
- Fuel manifold
- Dual Racor 75900Max fuel filters for main engines
- Reverso fuel polishing system
- Reverso oil change system
- Delta-T engine room air filtration system

-
- Seastar hydraulic steering system
 - Groco ARG-3020 sea strainers
 - Marinair Systems reverse cycle air conditioning/heating system
 - 2 X Headhunter Mach5 fresh water pumps
 - Island Marine Spectra stabilizer system
 - Spurs line cutters
 - 12hp American Bow Thruster
 - Sea Recovery Aqua Whisper 1400 gpd watermaker
 - 2 X Seaward stainless steel 28 gallon water heaters
 - Spark-L-Pure water filtration system
 - Beam central vacuum system
 - Headhunter Royal Flush toilets
 - Tankwatch blackwater tank monitor panel
 - Workbench in the lazarette
 - Full complement of tools included
 - Spare parts inventory
 - Spare propellers

67' Lyman-Morse Deck Equipment

- Maxwell 3500 anchor windlass with controls at each helm and a remote on a lanyard
- Maxwell 2200 winch starboard aft with foot control
- Lewmar 110lb claw anchor
- Fortress anchor
- Fresh water and raw water washdown forward and aft
- Starboard side deck storage
- 2 X foredeck storage lockers

- 4 X stainless steel dorades
- 5 X foredeck hatches
- Electri-Chef stainless steel BBQ grill on the aftdeck
- Spreader lights
- Non-skid side decks and foredeck
- Teak decks on the integral swimplatform, cockpit and aftdeck
- Teak cap rails
- Stainless steel rails forward
- Stainless steel deck hardware
- Full complement of exterior canvas covers
- Window and windshield covers

67' Lyman-Morse Tender

- 10'6" Novurania Williams 325 jet drive tender with 80 hp 4-cylce inboard engine
- Steelhead Marine SM 1500R tender davit

67' Lyman-Morse Safety & Fire Protection

- Fireboy FE241 fire suppression system in the engine room, lazarette and mid bilge mechanical compartment
- Switlik 6 person liferaft
- Kahlenberg air horns
- Stern and engine room camera system
- Par and Rule bilge pumps and bilge high water alarms

67' Lyman-Morse Exclusions

- Sellers' personal belongings

Исключения

При продаже яхты исключаются личные вещи владельца.

Отказ от ответственности

Компания предоставляет описание судна или яхты добросовестно, но не может гарантировать точность этой информации, а также не ручается за техническое состояние. Покупатель должен проинструктировать своих агентов или оценщиков исследовать представленную информацию более подробно, по собственному желанию. Продажа судна или яхты, изменение цены или снятие с продажи будет происходить без предварительного уведомления.

ФОТОГРАФИИ

67' Lyman-Morse starboard profile



67' Lyman-Morse port profile



67' Lyman-Morse port profile



67' Lyman-Morse aft profile



67' Lyman-Morse anchor windlass



67' Lyman-Morse foredeck



67' Lyman-Morse foredeck aft



67' Lyman-Morse port side deck photo1



67' Lyman-Morse port side deck photo2



67' Lyman-Morse starboard side deck photo1



67' Lyman-Morse starboard side deck photo2



67' Lyman-Morse starboard side deck storage



67' Lyman-Morse swimplatform



67' Lyman-Morse cockpit



67' Lyman-Morse tender davit



67' Lyman-Morse aftdeck



67' Lyman-Morse aftdeck seating



67' Lyman-Morse aftdeck table



67' Lyman-Morse aftdeck BBQ grill



67' Lyman-Morse flybridge forward



67' Lyman-Morse flybridge aft



67' Lyman-Morse flybridge port



67' Lyman-Morse flybridge starboard



67' Lyman-Morse flybridge helm photo1



67' Lyman-Morse flybridge helm photo2



67' Lyman-Morse flybridge helmseats



67' Lyman-Morse flybridge seating



67' Lyman-Morse flybridge refrigerator



67' Lyman-Morse flybridge-pilothouse stairs



67' Lyman-Morse pilothouse forward



67' Lyman-Morse pilothouse aft



67' Lyman-Morse pilothouse port



67' Lyman-Morse pilothouse port forward



67' Lyman-Morse pilothouse starboard



67' Lyman-Morse pilothouse helm



67' Lyman-Morse pilothouse helm seat



67' Lyman-Morse pilothouse seating



67' Lyman-Morse pilothouse starboard aft



67' Lyman-Morse salon forward



67' Lyman-Morse salon aft



67' Lyman-Morse salon starboard



67' Lyman-Morse salon wine cooler



67' Lyman-Morse galley photo1



67' Lyman-Morse galley photo2



67' Lyman-Morse extra refrigeration



67' Lyman-Morse master stateroom



67' Lyman-Morse master stateroom port



67' Lyman-Morse master stateroom starboard



67' Lyman-Morse master stateroom forward



67' Lyman-Morse master stateroom vanity



67' Lyman-Morse master stateroom head



67' Lyman-Morse master stateroom shower



67' Lyman-Morse guest stateroom



67' Lyman-Morse guest stateroom port



67' Lyman-Morse guest stateroom starboard



67' Lyman-Morse guest stateroom aft



67' Lyman-Morse guest stateroom head



67' Lyman-Morse washer-dryer



67' Lyman-Morse built-in ironing board



67' Lyman-Morse engine room



67' Lyman-Morse port main engine



67' Lyman-Morse port gearbox



67' Lyman-Morse port Racor fuel filters



67' Lyman-Morse starboard main engine



67' Lyman-Morse starboard gearbox



67' Lyman-Morse starboard Racor fuel filters



67' Lyman-Morse fuel manifold



67' Lyman-Morse fuel polishing system



67' Lyman-Morse oil change system



67' Lyman-Morse engine room Delta-T air filtration system



67' Lyman-Morse fresh water system pumps



67' Lyman-Morse watermaker



67' Lyman-Morse pilothouse electrical panel



67' Lyman-Morse central vacuum system



67' Lyman-Morse salon electrical panel



67' Lyman-Morse generator panels



67' Lyman-Morse port generator sound box



67' Lyman-Morse port generator



67' Lyman-Morse port generator Racor fuel filters



67' Lyman-Morse starboard generator sound box



67' Lyman-Morse starboard generator



67' Lyman-Morse starboard generator Racor fuel filters



67' Lyman-Morse inverter-charger



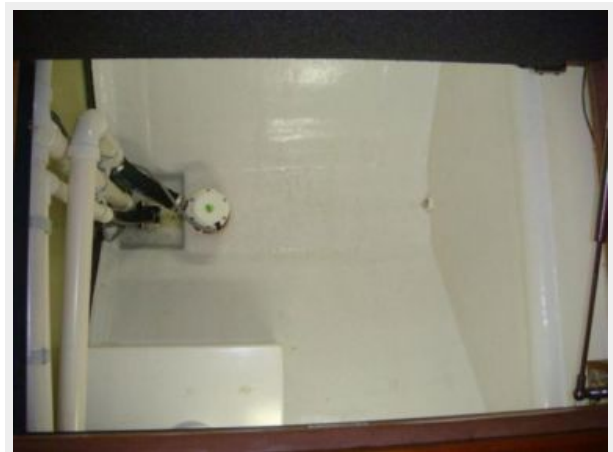
67' Lyman-Morse lazarette



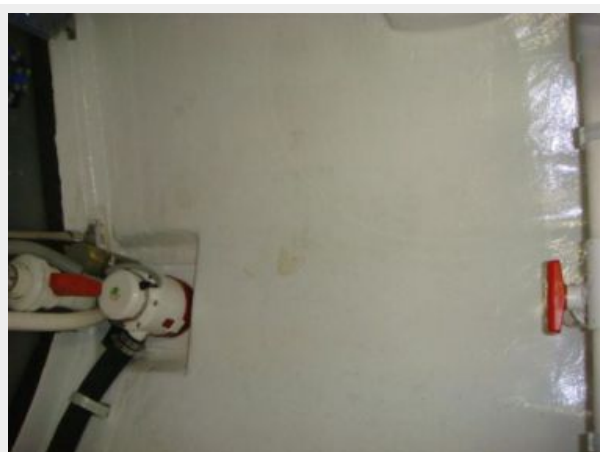
67' Lyman-Morse bilge hatch insulation



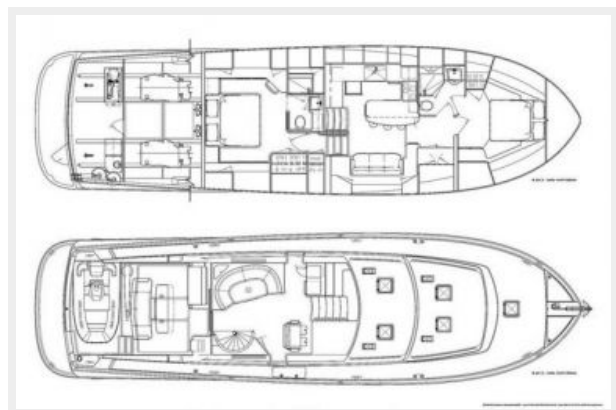
67' Lyman-Morse immaculate forward bilge



67' Lyman-Morse immaculate mid bilge



67' Lyman-Morse layout



КОНТАКТЫ

Андрей Шестаков (Andrey Shestakov) – ведущий яхтенный брокер отдела продаж яхт и судов компании Shestakov Yacht Sales Inc. Официальный представитель Shestakov Yacht Sales Inc. для русскоговорящих клиентов в центральном офисе компании в Майами/Форт Лодердейл/Флорида/США.

Контактная информация

Email: andrey@shestakovyachtsales.com

Web: shestakovyachtsales.com

Телефоны

Краснодарский край: **+7(918)465-66-44**

США, Майами, Флорида: **+1(954)274-4435**

Время работы

Понедельник – Суббота: **9:00 - 21:00**
EDT

Воскресенье: **Закрито**

Адрес



Harbour Towne Marina, 850 NE 3rd St,
STE 213, Dania, FL 33004