

JOAN'S ARK — WESTPORT



Судостроитель: WESTPORT

Год постройки: 2002

Модель: Моторная яхта

Цена: **ЦЕНА ЯХТЫ ПО ЗАПРОСУ**

Местонахождение: United States

Длина общая: 112' 0" (34.14m)

Ширина: 24' 0" (7.32m)

Мин. осадка: 5' 6" (1.68m)

Макс. осадка: 6' 0" (1.83m)

Крейс. скорость: 20 Kts. (23 MPH)

Макс. скорость: 23 Kts. (26 MPH)

Купить **JOAN'S ARK — WESTPORT** а также выбрать подходящую вам яхту из нашего каталога яхт вам поможет опытный яхтенный брокер Андрей Шестаков. На сегодняшний день компания **Shestakov Yacht Sales Inc.** имеет большое количество яхт в собственном списке продаж, а также тесно сотрудничает со всеми крупными яхтенными производителями по всему миру.

Для того чтобы купить яхту **JOAN'S ARK — WESTPORT** а также проконсультироваться по любому вопросу связанному с покупкой, продажей, чартером яхт позвоните по телефону **+7(918)465-66-44**.

ОГЛАВЛЕНИЕ

ОГЛАВЛЕНИЕ	2
ХАРАКТЕРИСТИКИ	5
Основная информация	5
Размеры	5
Скорость, вместимость и масса	5
Размещение	5
Корпус и палуба	6
Информация о двигателе	6
ПОДРОБНОЕ ОПИСАНИЕ	7
Accommodations & Layout	7
Machinery	12
Communication Systems	14
Navigation Systems	15
Entertainment Systems	15
Galley/Laundry Equipment	17
Deck Equipment	17
Security, Fire Fighting & Safety Equipment	18
Remarks	19
Exclusions	19
Исключения	19
Отказ от ответственности	19
ФОТОГРАФИИ	20
Salon	20
Salon	20
Salon	20
Dining	20
Galley	20
Dining	20

Galley/Dinette	21
Galley	21
Master Stateroom	21
Master Stateroom	21
VIP Stateroom	21
Master Head	21
VIP Head	22
Guest Queen Stateroom	22
Day Head	22
Guest Twin Stateroom	22
Pilothouse	23
Pilothouse	23
Pilothouse Seating	23
Helm	23
Flybridge Bar	23
Flybridge Skidds	23
Flybridge Bar	24
Flybridge	24
Flybridge	24
Flybridge	24
Flybridge	25
Flybridge	25
Flybridge	25
Flybridge Sunpads	25
Aft Deck	26
Aft Deck	26
Engine Room	26
Engine Room	26
Engine Room	26

Engine Room	27
Toys	27
Profile	27
Layout	28
КОНТАКТЫ	29
Контактная информация	29
Телефоны	29
Время работы	29
Адрес	29

ХАРАКТЕРИСТИКИ

Основная информация

Тип судна: Моторная яхта

Подкатегория: Raised Pilothouse

Модельный год: 2002

Год постройки: 2002

Страна: United States

Верх: Hardtop

Размеры

Длина общая: 112' 0" (34.14m)

Ширина: 24' 0" (7.32m)

Мин. осадка: 5' 6" (1.68m)

Макс. осадка: 6' 0" (1.83m)

Скорость, вместимость и масса

Крейс. скорость: 20 Kts. (23 MPH)

Макс. скорость: 23 Kts. (26 MPH)

Вместимость воды: 1075 Gallons

Вместимость сточного бака: 475 Gallons

Объем топливного бака: 5500 Gallons

Размещение

Всего кают: 4

Всего коек: 8

Спальные места: 8

Всего ком. состава: 5

Каюты экипажа: 3

Койки экипажа: 5

Спальных мест экипажа: 5

Комм. состав экипажа: 1

Корпус и палуба

Материал корпуса: Fiberglass

Материал палубы: Teak

Комплектация корпуса: Semi-Displacement

Цвет корпуса: White

Дизайнер корпуса: Jack Sarin

Информация о двигателе

Двигатели: 2

Производитель: MTU

Модель: 16V2000 DDEC

Тип двигателя: Inboard

Тип топлива: Diesel

ПОДРОБНОЕ ОПИСАНИЕ

Accommodations & Layout

JOAN'S ARK was purchased in 2010 by a very knowledgeable yachtsman, since he purchased the boat he has completely customized the interior, by changing out all soft goods, adding custom cabinetry with new marble, lighting, appliances, electronics, AV, removal of the salon bar, new flybridge seating, etc. not to mention mechanical. In 2014, a complete exterior paint job was done. JOAN'S ARK comfortably sleeps eight (8) owners and guests in four (4) luxurious staterooms. Crew accommodations are in two (2) staterooms aft with the Captain's cabin separate. JOAN'S ARK represents an opportunity to own the last of the old style Westport motor yachts with excellent performance, seaworthiness and low maintenance. This vessel has a large Salon and a formal dining area in the forward Salon. There are custom buffet cabinets with custom Lucite restraints for storage of formal dinnerware and crystal in addition to two drawers for silverware and serving utensils. Exiting the Salon to the Aft Deck you pass through large stainless steel, counter balanced double doors. The Aft Deck consists of a large U-shaped seating area with two large occasional chairs in all providing comfortable seating for up to eighteen people. The varnished wood table has flip up inserts on each side of the table allowing comfortable entrance and exit. Going forward from the Salon to the starboard passageway is the Day Head. Further forward is the large "Country Kitchen" style Galley. The Galley features a pull-out pantry, lazy Susans along with a full compliment of top end appliances. The Galley layout is very open and inviting with casual U-shaped seating forward. This is a popular area of the yacht due to the casual nature of the exhibition style Galley. The counters are all granite, thus complimenting "the look" of the Salon. Forward is the VIP Stateroom. This separate and private stateroom is complete with Queen size center-line bed, plenty of drawer space, ensuite bath and cedar-lined walk-in closet. Moving forward to port from the Salon is the stairway passage down to the full beam Master Stateroom with king size center-line bed, his and her bath with heads and vanities. Aft off the guest foyer are the two Guest Staterooms one with a Queen size bed and ensuite bath and the other with twin berths and ensuite bath. The Pilothouse is entered from both port and starboard sides forward of the Salon where guests can lounge on the bench seat with wood rimmed, marble table top and watch the sights. Up from the Pilothouse is the large Flybridge with three helm seats, large hot tub, gas grill at the bar with five bar stools. There is additional seating to starboard. Tender and jet ski's are located aft on the Flybridge. JOAN'S ARK comes complete with child gates for additional safety while on the Flybridge deck. JOAN'S ARK comfortably sleeps eight (8) owners and guests in four (4) luxurious staterooms. Crew accommodations are in two (2) staterooms aft with the Captain's cabin separate. JOAN'S ARK represents an opportunity to own a late model fiberglass motor yacht with excellent performance, seaworthiness and low maintenance. This vessel has a large Salon with a walk-behind, step down bar located aft to portside and a formal dining area in the forward Salon. There are buffet cabinets with custom Lucite restraints for storage of formal dinnerware and crystal in addition to two drawers for silverware and serving utensils. The wet bar features a Scotsman ice-maker, liquor storage cabinet and stainless steel sink with hot and cold water and granite countertop with four bar chairs. Exiting the Salon to the Aft Deck you pass through large stainless steel,

counter balanced double doors. The Aft Deck consists of a large U-shaped seating area with two large occasional chairs in all providing comfortable seating for up to eight-ten people. The varnished wood table has flip up inserts on each side of the table allowing comfortable entrance and exit. Going forward from the Salon to the starboard passageway is the Day Head. Further forward is the large "Country Kitchen" style Galley. The Galley features a pull-out pantry, lazy Susans along with a full compliment of top end appliances. The Galley layout is very open and inviting with casual U-shaped seating forward. This is a popular area of the yacht due to the casual nature of the exhibition style Galley. The counters are all granite, thus complimenting "the look" of the Salon. Forward is the VIP Stateroom. This separate and private stateroom is complete with Queen size center-line bed, plenty of drawer space, ensuite bath and cedar-lined walk-in closet. Moving forward to port from the Salon is the stairway passage down to the full beam Master Stateroom with king size center-line bed, his and her bath with heads and vanities. Aft off the guest foyer are the two Guest Staterooms one with a Queen size bed and ensuite bath and the other with twin berths and ensuite bath. The Pilothouse is entered from both port and starboard sides forward of the Salon where guests can lounge on the bench seat with wood rimmed, marble table top and watch the sights. Up from the Pilothouse is the large Flybridge with three helm seats, large hot tub, gas grill at the bar with five bar stools. There is additional seating to starboard. Tender and jet ski's are located aft on the Flybridge. LUCKY SEVEN comes complete with child gates for additional safety while on the Flybridge deck. LUCKY SEVEN comfortably sleeps eight (8) owners and guests in four (4) luxurious staterooms. Crew accommodations are in two (2) staterooms aft with the Captain's cabin separate. LUCKY SEVEN represents an opportunity to own a late model fiberglass motor yacht with excellent performance, seaworthiness and low maintenance. This vessel has a large Salon with a walk-behind, step down bar located aft to portside and a formal dining area in the forward Salon. There are buffet cabinets with custom Lucite restraints for storage of formal dinnerware and crystal in addition to two drawers for silverware and serving utensils. The wet bar features a Scotsman ice-maker, liquor storage cabinet and stainless steel sink with hot and cold water and granite countertop with four bar chairs. Exiting the Salon to the Aft Deck you pass through large stainless steel, counter balanced double doors. The Aft Deck consists of a large U-shaped seating area with two large occasional chairs in all providing comfortable seating for up to eight-ten people. The varnished wood table has flip up inserts on each side of the table allowing comfortable entrance and exit. Going forward from the Salon to the starboard passageway is the Day Head. Further forward is the large "Country Kitchen" style Galley. The Galley features a pull-out pantry, lazy Susans along with a full compliment of top end appliances. The Galley layout is very open and inviting with casual U-shaped seating forward. This is a popular area of the yacht due to the casual nature of the exhibition style Galley. The counters are all granite, thus complimenting "the look" of the Salon. Forward is the VIP Stateroom. This separate and private stateroom is complete with Queen size center-line bed, plenty of drawer space, ensuite bath and cedar-lined walk-in closet. Moving forward to port from the Salon is the stairway passage down to the full beam Master Stateroom with king size center-line bed, his and her bath with heads and vanities. Aft off the guest foyer are the two Guest Staterooms one with a Queen size bed and ensuite bath and the other with twin berths and ensuite bath. The Pilothouse is entered from both port and starboard sides forward of the Salon where guests can lounge on the bench seat with wood rimmed, marble table top and watch the sights. Up from the Pilothouse is the

large Flybridge with three helm seats, large hot tub, gas grill at the bar with five bar stools. There is additional seating to starboard. Tender and jet ski's are located aft on the Flybridge. LUCKY SEVEN comes complete with child gates for additional safety while on the Flybridge deck. LUCKY SEVEN comfortably sleeps eight (8) owners and guests in four (4) luxurious staterooms. Crew accommodations are in two (2) staterooms aft with the Captain's cabin separate. LUCKY SEVEN represents an opportunity to own a late model fiberglass motor yacht with excellent performance, seaworthiness and low maintenance. This vessel has a large Salon with a walk-behind, step down bar located aft to portside and a formal dining area in the forward Salon. There are buffet cabinets with custom Lucite restraints for storage of formal dinnerware and crystal in addition to two drawers for silverware and serving utensils. The wet bar features a Scotsman ice-maker, liquor storage cabinet and stainless steel sink with hot and cold water and granite countertop with four bar chairs. Exiting the Salon to the Aft Deck you pass through large stainless steel, counter balanced double doors. The Aft Deck consists of a large U-shaped seating area with two large occasional chairs in all providing comfortable seating for up to eighteen people. The varnished wood table has flip up inserts on each side of the table allowing comfortable entrance and exit. Going forward from the Salon to the starboard passageway is the Day Head. Further forward is the large "Country Kitchen" style Galley. The Galley features a pull-out pantry, lazy Susans along with a full compliment of top end appliances. The Galley layout is very open and inviting with casual U-shaped seating forward. This is a popular area of the yacht due to the casual nature of the exhibition style Galley. The counters are all granite, thus complimenting "the look" of the Salon. Forward is the VIP Stateroom. This separate and private stateroom is complete with Queen size center-line bed, plenty of drawer space, ensuite bath and cedar-lined walk-in closet. Moving forward to port from the Salon is the stairway passage down to the full beam Master Stateroom with king size center-line bed, his and her bath with heads and vanities. Aft off the guest foyer are the two Guest Staterooms one with a Queen size bed and ensuite bath and the other with twin berths and ensuite bath. The Pilothouse is entered from both port and starboard sides forward of the Salon where guests can lounge on the bench seat with wood rimmed, marble table top and watch the sights. Up from the Pilothouse is the large Flybridge with three helm seats, large hot tub, gas grill at the bar with five bar stools. There is additional seating to starboard. Tender and jet ski's are located aft on the Flybridge. LUCKY SEVEN comes complete with child gates for additional safety while on the Flybridge deck. LUCKY SEVEN comfortably sleeps eight (8) owners and guests in four (4) luxurious staterooms. Crew accommodations are in two (2) staterooms aft with the Captain's cabin separate. LUCKY SEVEN represents an opportunity to own a late model fiberglass motor yacht with excellent performance, seaworthiness and low maintenance. This vessel has a large Salon with a walk-behind, step down bar located aft to portside and a formal dining area in the forward Salon. There are buffet cabinets with custom Lucite restraints for storage of formal dinnerware and crystal in addition to two drawers for silverware and serving utensils. The wet bar features a Scotsman ice-maker, liquor storage cabinet and stainless steel sink with hot and cold water and granite countertop with four bar chairs. Exiting the Salon to the Aft Deck you pass through large stainless steel, counter balanced double doors. The Aft Deck consists of a large U-shaped seating area with two large occasional chairs in all providing comfortable seating for up to eighteen people. The varnished wood table has flip up inserts on each side of the table allowing comfortable entrance and exit. Going forward from the Salon to the starboard passageway is the

Day Head. Further forward is the large "Country Kitchen" style Galley. The Galley features a pull-out pantry, lazy Susans along with a full compliment of top end appliances. The Galley layout is very open and inviting with casual U-shaped seating forward. This is a popular area of the yacht due to the casual nature of the exhibition style Galley. The counters are all granite, thus complimenting "the look" of the Salon. Forward is the VIP Stateroom. This separate and private stateroom is complete with Queen size center-line bed, plenty of drawer space, ensuite bath and cedar-lined walk-in closet. Moving forward to port from the Salon is the stairway passage down to the full beam Master Stateroom with king size center-line bed, his and her bath with heads and vanities. Aft off the guest foyer are the two Guest Staterooms one with a Queen size bed and ensuite bath and the other with twin berths and ensuite bath. The Pilothouse is entered from both port and starboard sides forward of the Salon where guests can lounge on the bench seat with wood rimmed, marble table top and watch the sights. Up from the Pilothouse is the large Flybridge with three helm seats, large hot tub, gas grill at the bar with five bar stools. There is additional seating to starboard. Tender and jet ski's are located aft on the Flybridge. LUCKY SEVEN comes complete with child gates for additional safety while on the Flybridge deck. LUCKY SEVEN comfortably sleeps eight (8) owners and guests in four (4) luxurious staterooms. Crew accommodations are in two (2) staterooms aft with the Captain's cabin separate. LUCKY SEVEN represents an opportunity to own a late model fiberglass motor yacht with excellent performance, seaworthiness and low maintenance. This vessel has a large Salon with a walk-behind, step down bar located aft to portside and a formal dining area in the forward Salon. There are buffet cabinets with custom Lucite restraints for storage of formal dinnerware and crystal in addition to two drawers for silverware and serving utensils. The wet bar features a Scotsman ice-maker, liquor storage cabinet and stainless steel sink with hot and cold water and granite countertop with four bar chairs. Exiting the Salon to the Aft Deck you pass through large stainless steel, counter balanced double doors. The Aft Deck consists of a large U-shaped seating area with two large occasional chairs in all providing comfortable seating for up to eighteen people. The varnished wood table has flip up inserts on each side of the table allowing comfortable entrance and exit. Going forward from the Salon to the starboard passageway is the Day Head. Further forward is the large "Country Kitchen" style Galley. The Galley features a pull-out pantry, lazy Susans along with a full compliment of top end appliances. The Galley layout is very open and inviting with casual U-shaped seating forward. This is a popular area of the yacht due to the casual nature of the exhibition style Galley. The counters are all granite, thus complimenting "the look" of the Salon. Forward is the VIP Stateroom. This separate and private stateroom is complete with Queen size center-line bed, plenty of drawer space, ensuite bath and cedar-lined walk-in closet. Moving forward to port from the Salon is the stairway passage down to the full beam Master Stateroom with king size center-line bed, his and her bath with heads and vanities. Aft off the guest foyer are the two Guest Staterooms one with a Queen size bed and ensuite bath and the other with twin berths and ensuite bath. The Pilothouse is entered from both port and starboard sides forward of the Salon where guests can lounge on the bench seat with wood rimmed, marble table top and watch the sights. Up from the Pilothouse is the large Flybridge with three helm seats, large hot tub, gas grill at the bar with five bar stools. There is additional seating to starboard. Tender and jet ski's are located aft on the Flybridge. LUCKY SEVEN comes complete with child gates for additional safety while on the Flybridge deck. LUCKY SEVEN comfortably sleeps eight (8) owners and guests in four (4) luxurious

staterooms. Crew accommodations are in two (2) staterooms aft with the Captain's cabin separate. LUCKY SEVEN represents an opportunity to own a late model fiberglass motor yacht with excellent performance, seaworthiness and low maintenance. This vessel has a large Salon with a walk-behind, step down bar located aft to portside and a formal dining area in the forward Salon. There are buffet cabinets with custom Lucite restraints for storage of formal dinnerware and crystal in addition to two drawers for silverware and serving utensils. The wet bar features a Scotsman ice-maker, liquor storage cabinet and stainless steel sink with hot and cold water and granite countertop with four bar chairs. Exiting the Salon to the Aft Deck you pass through large stainless steel, counter balanced double doors. The Aft Deck consists of a large U-shaped seating area with two large occasional chairs in all providing comfortable seating for up to eighteen people. The varnished wood table has flip up inserts on each side of the table allowing comfortable entrance and exit. Going forward from the Salon to the starboard passageway is the Day Head. Further forward is the large "Country Kitchen" style Galley. The Galley features a pull-out pantry, lazy Susans along with a full compliment of top end appliances. The Galley layout is very open and inviting with casual U-shaped seating forward. This is a popular area of the yacht due to the casual nature of the exhibition style Galley. The counters are all granite, thus complimenting "the look" of the Salon. Forward is the VIP Stateroom. This separate and private stateroom is complete with Queen size center-line bed, plenty of drawer space, ensuite bath and cedar-lined walk-in closet. Moving forward to port from the Salon is the stairway passage down to the full beam Master Stateroom with king size center-line bed, his and her bath with heads and vanities. Aft off the guest foyer are the two Guest Staterooms one with a Queen size bed and ensuite bath and the other with twin berths and ensuite bath. The Pilothouse is entered from both port and starboard sides forward of the Salon where guests can lounge on the bench seat with wood rimmed, marble table top and watch the sights. Up from the Pilothouse is the large Flybridge with three helm seats, large hot tub, gas grill at the bar with five bar stools. There is additional seating to starboard. Tender and jet ski's are located aft on the Flybridge. LUCKY SEVEN comes complete with child gates for additional safety while on the Flybridge deck. LUCKY SEVEN comfortably sleeps eight (8) owners and guests in four (4) luxurious staterooms. Crew accommodations are in two (2) staterooms aft with the Captain's cabin separate. LUCKY SEVEN represents an opportunity to own a late model fiberglass motor yacht with excellent performance, seaworthiness and low maintenance. This vessel has a large Salon with a walk-behind, step down bar located aft to portside and a formal dining area in the forward Salon. There are buffet cabinets with custom Lucite restraints for storage of formal dinnerware and crystal in addition to two drawers for silverware and serving utensils. The wet bar features a Scotsman ice-maker, liquor storage cabinet and stainless steel sink with hot and cold water and granite countertop with four bar chairs. Exiting the Salon to the Aft Deck you pass through large stainless steel, counter balanced double doors. The Aft Deck consists of a large U-shaped seating area with two large occasional chairs in all providing comfortable seating for up to eighteen people. The varnished wood table has flip up inserts on each side of the table allowing comfortable entrance and exit. Going forward from the Salon to the starboard passageway is the Day Head. Further forward is the large "Country Kitchen" style Galley. The Galley features a pull-out pantry, lazy Susans along with a full compliment of top end appliances. The Galley layout is very open and inviting with casual U-shaped seating forward. This is a popular area of the yacht due to the casual nature of the exhibition style Galley. The counters are all granite, thus

complimenting "the look" of the Salon. Forward is the VIP Stateroom. This separate and private stateroom is complete with Queen size center-line bed, plenty of drawer space, ensuite bath and cedar-lined walk-in closet. Moving forward to port from the Salon is the stairway passage down to the full beam Master Stateroom with king size center-line bed, his and her bath with heads and vanities. Aft off the guest foyer are the two Guest Staterooms one with a Queen size bed and ensuite bath and the other with twin berths and ensuite bath. The Pilothouse is entered from both port and starboard sides forward of the Salon where guests can lounge on the bench seat with wood rimmed, marble table top and watch the sights. Up from the Pilothouse is the large Flybridge with three helm seats, large hot tub, gas grill at the bar with five bar stools. There is additional seating to starboard. Tender and jet ski's are located aft on the Flybridge. LUCKY SEVEN comes complete with child gates for additional safety while on the Flybridge deck.

Machinery

Main Engines

Engine Type: 16V2000 DDEC

Engine Hours: 5,800 each

Gearboxes for Main Engines: DD 6557-DC

Drive: 3.03:1

Speed Consumption per hours Range RPM

	Speed	Consump/hr	Range	RPM
Maximum:	23	180 g	680 nm	2360
Cruising:	20	150 g	718 nm	2250

Economical: 12.5 30 g 2041 nm 1300

Generators & Electricity

Output: 120/240 V 50KW (P) 65 KW (S)

Generators: Northern Lights - Port hours 13,200 / Stbd. rebuilt 01/15

Generator Fuel Consumption: approx. 100gls / 24 hrs.

Shore Power: A SEA converters 2X 30KW

Batteries

Main Engine Starting: 24 V four 8-D gel cell

Generator Starting: 12 V one 8-D gel cell each

Emergency: 2/ 8-D for 24 V, 2/ 8D for 12 V

Air Conditioning:

Type: Aqua Air 15 Ton, 3 chillers

Other Machinery

Watermakers:	Sea Recovery 1200/day
Trim Tabs/Stabilizers:	Naiad 353
Bow Thruster:	16" Westmar 40 HP hydraulic
Steering System:	Jastram hydraulic
Fuel Separator & Filtration:	Sea Pro 511
Sewage System:	Head Hunter, 497 g holding tank
Fresh Water System:	Head Hunter,
Bilge Water Filtration:	none
Lube Oil Capacity	60 g
Waste Oil Capacity	50 g

Communication Systems

SATcom:	Fleet 33
Telephone System:	Panasonic
SSB:	SEA 235
VHF:	Icom M602

Intercom: Panasonic phone system

Navigation Systems

All new electronics 2012

- (2) Furuno Radars
- FA-150 AIS Furuno
- GP-150 GPS Furuno
- Simrad NSO Plotter
- (3) Icom 604-VHF Radio
- (3) RD-33 Furuno Display
- Nav Computer, Nobeltec, Weatherworx
- Camera - (4) Engine room cameras, (1) Aft Camera, (2) Port and stbd. cameras
- Flir Thermal Camera 320
- Ships computer
- (4) 19" KEP Glass bridge monitors - Pilothouse
- (2) 15" KEP Glass bridge monitors - Flybridge
- KEP Bridge view
- Maretron Wind Speed Antenna
- Panasonic phone system
- RGC 50 Gyro Simrad
- Tellular Cell Terminal
- (2) Fusion stereos - Bridge/Flybridge
- Wave Wi-Fi access point
- KVH VSAT V3
- HP Photosmart printer
- Comnav 2001 autopilot

Entertainment Systems

All new AV 2012 Master Stateroom:

- 37" Samsung LED TV
- Samsung 3D Blu-ray Player
- Apple TV
- Yamaha YMC-700 Surround receiver
- Yamaha iPod Dock
- Direct TV HD receiver

Queen Stateroom:

- Samsung 22" LED TV
- Yamaha YMC-700 Surround receiver
- Yamaha iPod dock
- Direct TV HD receiver

Twin Stateroom:

- Samsung 22" LED TV
- Yamaha YMC-700 Surround receiver
- Yamaha iPod dock
- Direct TV HD receiver

VIP Stateroom:

- Samsung 22" LED TV
- Yamaha YMC-700 Surround receiver
- Yamaha iPod dock
- Direct TV HD receiver

Galley:

- 42" Plasma TV
- Yamaha YMC-700 Surround receiver
- Yamaha iPod dock
- Direct TV HD receiver

Salon:

- Samsung 46" LED TV
- Samsung 3D Blu-ray player
- Apple TV
- Yamaha Aventage Surround receiver
- Niles remote
- Direct TV HD receiver

Back Deck:

- Sunbright Marine TV
- Yamaha YMC-700 Surround receiver
- Yamaha iPod dock
- Direct TV HD receiver

Captain Room:

- 37" TV
- Samsung 3D Blu-ray player
- Apple TV

- Direct TV HD receiver

Crew:

- 37" TV
- Direct TV HD receiver

All speakers replaced in boat as well.

Galley/Laundry Equipment

Most appliances replaced 2012

Crew Galley/Mess Equipment

Refrigeration/Freezer: GE

Additional Galley Equipment

Refrigeration/Freezer: 1-Sub Zero, 3-GEs

Laundry Equipment:

Main Laundry Equipment GE-front load (new 10/08)

Deck Equipment

Anchor Windlass: Maxwell 4500, hydraulic

Aft Warping Capstans: Maxwell 2500, 24V

Anchors: 350 lb

Anchor Chain: 350' 5/8 chain

Boat Crane and Davits: Nautical Structures CEZ 2000-EX

Swimming Platform: built in as hull

Security, Fire Fighting & Safety Equipment

CCTV System: Ibex

Cameras: Eng. Rm, aft deck

Monitors:

Fire Fighting Equipment:

Fire Control System: 1301 Halon

Fire Extinguishers: 12

Alarms: smoke/ CO2

Safety Equipment

Life Rafts: 2 Zodiac (10 person, 12 person)

Life Rings: 2

EPIRBs: 1

Flares: standard kit

Medical Equipment: standard kit

Remarks

The layout of JOAN'S ARK is as good as it gets in a 112' motor yacht. The Master Stateroom is full-beam and located amidships with the VIP forward and Guest Staterooms aft off the Main Foyer and separate Crew Quarters located aft. This well planned layout, combined with an awesome Aft Deck, huge Salon and large "Country Kitchen" style Galley forward makes her a perfect 10!

- \$240,000 complete paint job finished in January, 2014
- Fresh bottom paint and props balanced

The manufacturer year is a 2001 and the model year is 2002.

Exclusions

Owner's personal effects, art work, inflatable tender on flybridge and (2) Jet Ski's. A full inventory of exclusions to be provided at time of fully executed Purchase Agreement.

Исключения

При продаже яхты исключаются личные вещи владельца.

Отказ от ответственности

Компания предоставляет описание судна или яхты добросовестно, но не может гарантировать точность этой информации, а также не ручается за техническое состояние. Покупатель должен проинструктировать своих агентов или оценщиков исследовать представленную информацию более подробно, по собственному желанию. Продажа судна или яхты, изменение цены или снятие с продажи будет происходить без предварительного уведомления.

ФОТОГРАФИИ

Salon



Salon



Salon



Dining



Dining



Galley



Galley



Galley/Dinette



Master Stateroom



Master Stateroom



Master Head



VIP Stateroom



VIP Head



Guest Queen Stateroom



Day Head



Guest Twin Stateroom



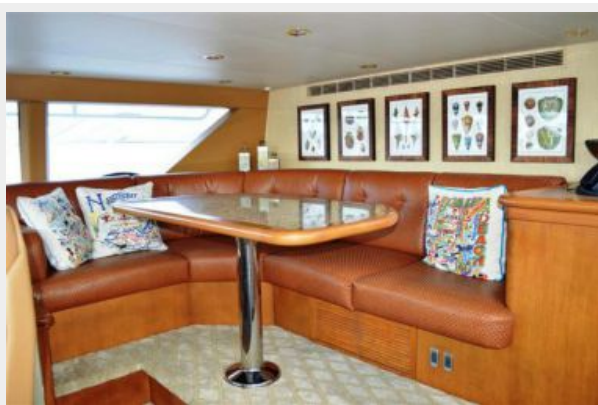
Pilothouse



Pilothouse



Pilothouse Seating



Helm



Flybridge Skids



Flybridge Bar



Flybridge Bar



Flybridge



Flybridge



Flybridge



Flybridge



Flybridge



Flybridge



Flybridge Sunpads



Aft Deck



Aft Deck



Engine Room



Engine Room



Engine Room



Engine Room



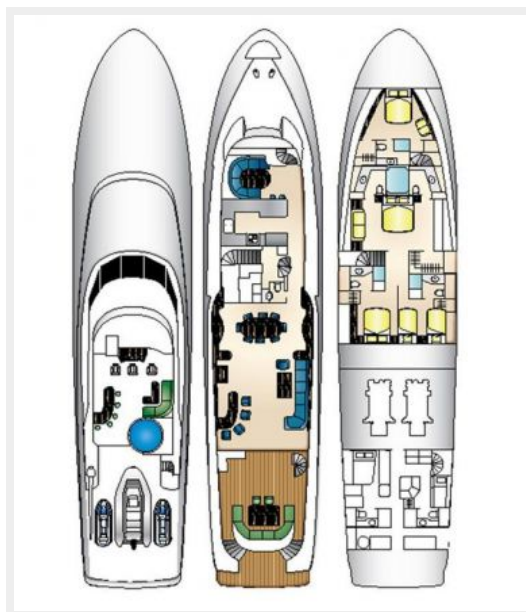
Toys



Profile



Layout



КОНТАКТЫ

Андрей Шестаков (Andrey Shestakov) – ведущий яхтенный брокер отдела продаж яхт и судов компании Shestakov Yacht Sales Inc. Официальный представитель Shestakov Yacht Sales Inc. для русскоговорящих клиентов в центральном офисе компании в Майами/Форт Лодердейл/Флорида/США.

Контактная информация

Email: andrey@shestakovyachtsales.com

Web: shestakovyachtsales.com

Телефоны

Краснодарский край: **+7(918)465-66-44**

США, Майами, Флорида: **+1(954)274-4435**

Время работы

Понедельник – Суббота: **9:00 - 21:00**
EDT

Воскресенье: **Закрето**

Адрес



Harbour Towne Marina, 850 NE 3rd St,
STE 213, Dania, FL 33004