

1989, 30' LUHRS ALURA — LUHRS



Builder: LUHRS

Year Built: 1989

Model: Cruiser

Price: PRICE ON APPLICATION

Location: United States

LOA: 30' 0" (9.14m)

Beam: 10' 3" (3.12m)

Max Draft: 2' 4" (0.71m)

Cruise Speed: 20.855429808 Kts. (24 MPH)

Max Speed: 27.807239744 Kts. (32 MPH)

Our experienced yacht broker, Andrey Shestakov, will help you choose and buy a yacht that best suits your needs 1989, 30' LUHRS ALURA — LUHRS from our catalogue. Presently, at Shestakov Yacht Sales Inc., we have a wide variety of yachts available on our sale's list. We also work in close contact with all the big yacht manufacturers from all over the world.

If you would like to buy a yacht 1989, 30' LUHRS ALURA — LUHRS or would like help answering any questions concerning purchasing, selling or chartering a yacht, please call +1(954)274-4435

TABLE OF CONTENTS

TABLE OF CONTENTS	2
SPECIFICATIONS	3
Overview	3
Basic Information	3
Dimensions	4
Speed, Capacities and Weight	4
Accommodations	4
Hull and Deck Information	4
Engine Information	4
PHOTOS	5
CONTACTS	13
Contact details	13
Telephones	13
Office hours	13
Address	13

SPECIFICATIONS

Overview

COCKPIT FEATURES: The ALURA'S cockpit area features two adjustable chairs, a stainless steel steering wheel and a nice selection of owner installed electronics. She's equipped with a bimini top with side and back curtains (with screening as well) for weather protection of the crew which all zips conveniently into the large bimini top. There is a molded-in self draining anchor stowage locker in the fore deck complete with anchor and line. The bow rail is stainless steel and mounted on the deck so as to allow ease of movement in safety, whether anchored or underway. The windshield is constructed of safety glass and both the port and starboard sides can be opened in varying adjustable positions.

CABIN FEATURES: The cabin area sports a 6' 4" headroom that allows you and your crew ease of movement and is ventilated with ports that come with screens and are easily adjustable for those cool evening breezes. Forward, the berthing area is complete with sleeping for two (2). The dinette is and adjustable pedestal table that converts to an additional 7 1/2' x 7' sleeping area. All cushions are fabric covered. The teak and holly sole is finished in polyurethane for low maintenance. All other teak is finished to a satin glow.

GALLEY: The galley comes complete with a microwave oven, an easy accessible icebox and a stainless steel sink. Stowage is plentiful in the galley and throughout the rest of the cabin area.

HEAD: There's an enclosed head, complete with shower, hot and cold pressurized water system, sink and mirror. Easily accessible stowage areas are also abundant in the head.

ELECTRONICS & TECHNICAL: SI-TEX T-180 Radar with Dome; SI-TEX CVS; GARMIN GPS Map 168 Sounder; NAVICO Auto Pilot; and all standard 1989 LUHRS 30 Alura Helm Illuminated Instrumentation.

ADDITIONAL FEATURES: Air Conditioning with Reverse Cycle Heating and Diesel Generator at 308 Hours.

Basic Information

Category: Cruiser

Sub Category: Express

Model Year: 1989

Year Built: 1989

Country: United States

Dimensions

LOA: 30' 0" (9.14m)**Beam:** 10' 3" (3.12m)**Max Draft:** 2' 4" (0.71m)

Speed, Capacities and Weight

Cruise Speed: 20.855429808 Kts. (24 MPH) **Max Speed:** 27.807239744 Kts. (32 MPH)**Displacement:** 7800 Pounds**Water Capacity:** 38 Gallons**Holding Tank:** 20 Gallons**Fuel Capacity:** 196 Gallons

Accommodations

Total Cabins: 1**Total Heads:** 1

Hull and Deck Information

Hull Material: Fiberglass

Engine Information

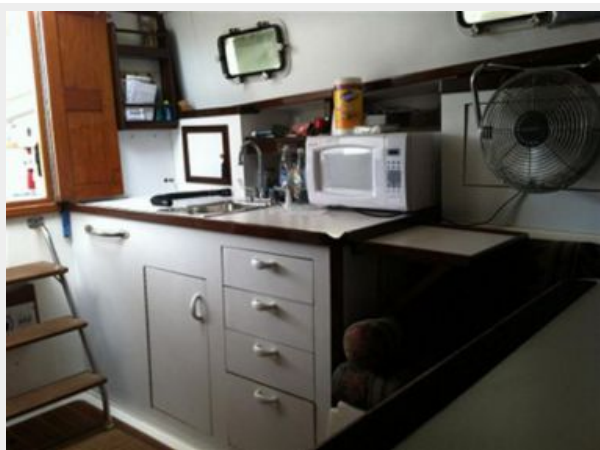
Engines: 1**Manufacturer:** Crusader**Model:** 350**Fuel Type:** Gas

PHOTOS



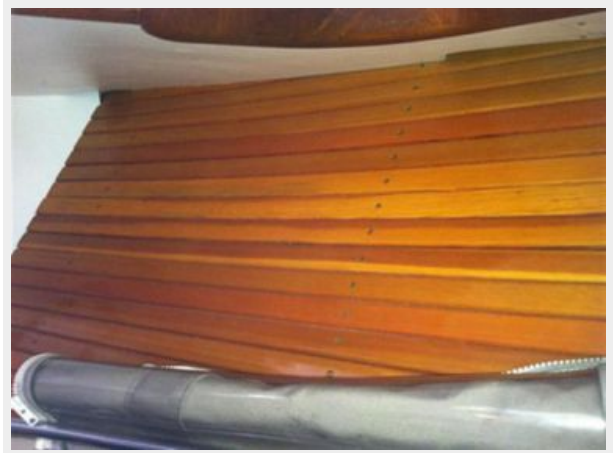


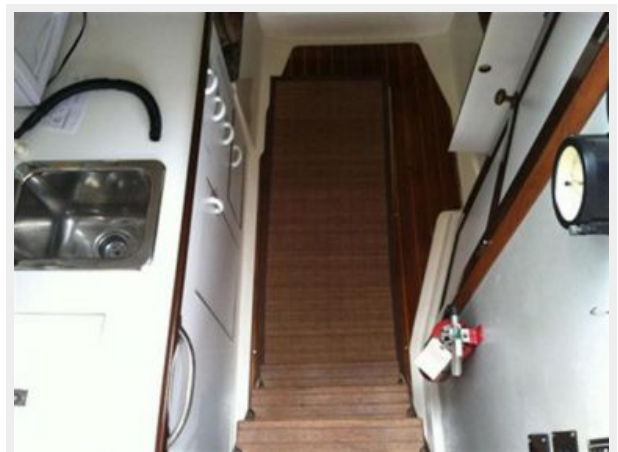












CONTACTS

Andrey Shestakov, leading yacht broker of the sales department of Shestakov Yacht Sales Inc. Shestakov Yacht Sales Inc., the official representative of the Miami/Fort Lauderdale FL headquarters.

Contact details

Email: andrey@shestakovyachtsales.com

Web: shestakovyachtsales.com/en/

Telephones

USA: +1(954)274-4435

Office hours

Monday – Saturday: **9:00 - 21:00** EDT

Sunday: **closed**

Address



Harbour Towne Marina, 850 NE 3rd St,
STE 213, Dania, FL 33004