

## AMBER — PERSHING



**Builder:** PERSHING

**Year Built:** 2011

**Model:** Cruiser

**Price:** PRICE ON APPLICATION

**Location:** United States

**LOA:** 64' 0" (19.51m)

**Beam:** 16' 5" (5.00m)

**Max Draft:** 4' 4" (1.32m)

**Cruise Speed:** 40 Kts. (46 MPH)

**Max Speed:** 46 Kts. (53 MPH)

Our experienced yacht broker, Andrey Shestakov, will help you choose and buy a yacht that best suits your needs **AMBER — PERSHING** from our catalogue. Presently, at Shestakov Yacht Sales Inc., we have a wide variety of yachts available on our sale's list. We also work in close contact with all the big yacht manufacturers from all over the world.

If you would like to buy a yacht **AMBER — PERSHING** or would like help answering any questions concerning purchasing, selling or chartering a yacht, please call **+1(954)274-4435**

# TABLE OF CONTENTS

TABLE OF CONTENTS	2
SPECIFICATIONS	4
Overview	4
Basic Information	4
Dimensions	4
Speed, Capacities and Weight	4
Accommodations	4
Hull and Deck Information	4
Engine Information	5
DETAILED INFORMATION	6
Equipment	6
Engine Room	6
Electronics	7
Deck Equipment	7
Audio & Visual Equipment	7
Salon / Helm	7
Galley	7
Appliances	7
Under Forward Accommodations	8
Master Stateroom	8
Bow Stateroom	8
Mid-Stateroom	8
Crew Stateroom	9
Exclusions	9
Disclaimer	9
PHOTOS	10
64' Pershing AMBER	10
64' Pershing AMBER	10

---

CONTACTS	16
Contact details	16
Telephones	16
Office hours	16
Address	16

---

# SPECIFICATIONS

---

## Overview

---

### Basic Information

---

**Category:** Cruiser

**Model Year:** 2011

**Year Built:** 2011

**Country:** United States

### Dimensions

---

**LOA:** 64' 0" (19.51m)

**Beam:** 16' 5" (5.00m)

**Max Draft:** 4' 4" (1.32m)

### Speed, Capacities and Weight

---

**Cruise Speed:** 40 Kts. (46 MPH)

**Max Speed:** 46 Kts. (53 MPH)

**Water Capacity:** 238 Gallons

**Fuel Capacity:** 952 Gallons

### Accommodations

---

**Total Cabins:** 3

**Sleeps:** 6

**Crew Cabin:** 1

**Crew Berths:** 1

**Crew Heads:** 1

### Hull and Deck Information

---

**Hull Material:** Fiberglass

**Deck Material:** Teak over Fiberglass

**Hull Configuration:** Planing

---

## Engine Information

---

**Engines:** 2

**Manufacturer:** MAN

**Model:** V12-1550

**Engine Type:** Inboard

**Fuel Type:** Diesel

## DETAILED INFORMATION

### Equipment

**Bottom:** Bow thruster Stern thruster Two underwater lights, centerline aft TOPSIDES/SWIM PLATFORM Integral swim platform with teak overlay Hydraulic swim ladder, centerline 100-amp Cablemaster, port Dockside water inlet, starboard Pop-up cleat, port and starboard Showerhead on hose, starboard Dockside phone/CATV inlet, port Passerelle, port Fuel fill cap, starboard Transom garage with: Two D.C. lights Freshwater washdown

**Decks and Superstructure:** Fiberglass deck with teak overlay on side decks Stainless steel rails and stanchions with stainless steel safety line Stainless steel anchor roller assembly 32-kg Trefoil galvanized anchor with approximately 250' of chain Lofrans anchor windlass with capstan and wildcat Access hatch to chain locker, centerline at bow Anchor washdown, in chain locker Sun lounge with pads, centerline on trunk cabin Two windshield wipers Navigation light, port and starboard Bow cleat, port and starboard Spring cleat, port and starboard Water fill, starboard Hardtop/radar arch with: VHF antennas AM/FM antenna Remote operated searchlight Two GPS antennas Signal pole with anchor light, forward navigation light, stern light Satellite television antenna

**Aft Deck:** Fiberglass deck with teak overlay L-shaped bench seat with cushions and hi/low table Access hatch to engine room Courtesy lights in overhang Sliding door to salon Two stereo speakers Control pad to garage hatch, passerelle, swim ladder Cut-off switches to ship service and engine star

### Engine Room

Entrance via aft deck hatch with entry ladder Kohler 23-kw generator, aft centerline, with 300 hours, fiberglass muffler, gas/waster exhaust separator, and fuel filter Two Arneson drive hydraulic trim units 24-volt freshwater pump with accumulator tank 24-volt bilge pump to five-compartment manifold 24-volt gray water pump 24-volt anchor washdown/fire pump 24-volt black water pump Electric/hydraulic pack for passerelle Electric/hydraulic pack for accessory hydraulics Hydraulic steering system to Arneson drives with reservoir Fluorescent light fixtures with safety lens Two electric/automatic bilge pumps Two high water alarm switches 60.6-lb HFC-227 cylinder, tag September 2011 110-volt air compressor 12-volt battery to generator, aft Two 12-volt batteries to each engine [forward of each engine] Four 12-volt batteries for 24-volt house service, starboard outboard MAN fuel filters to each engine Racor filter to generator Zahnradfabrik Friedrichshafen AG electronic clutch and throttle controls (2) Two Mastervolt inverters Mastervolt 24/75 battery charger Mastervolt 24/50 battery charger Engine raw water diverter valves for emergency bilge pumping capabilities, port and starboard Condaria chilled water air conditioning system with: Three compressors Raw water pump Chilled water pump Digital controller Fiberglass fuel tank, forward with sight tube 100-amp Cablemaster electric reel and collector drum Shore power transformer Battery cut-off switch to ship's service Battery cutoff

switch to generator

---

## Electronics

Furuno NavNet radar Furuno VHF Furuno NavNet 3-D GPS Furuno Depthsounder Furuno Autopilot White Star magnetic compass Remote operated searchlight

---

## Deck Equipment

Groundtackle: 32-kg Trefoil anchor with approximately 250' of chain Windlass:Lofrans Cleats: stainless steel Safetyrails: Stainless steel

---

## Audio & Visual Equipment

Sat TV Receivers: Direct TV Sharp Televisions MBQuart Stereos Bose Home Entertainment Theater

---

## Salon / Helm

Laminate sole Recessed overhead lights Overhead retractable sun roof, forward Bose surround stereo speakers L-Shaped benchseating, starboard Sharp flat panel television on electronic platform Icemaker Electrically powered window, port and starboard Two helm seats Helm console, forward starboard, with: White Star compass Steering wheel Zahnradfabrik Friedrichshafen AG electronic clutch/throttle controls MAN engine display panel, port and starboard Furuno FI-50 sounder/knotlog Furuno VHF radio Rudder angle indicator Furuno autopilot Furuno NavNet 3-D unit Searchlight control Fireboy engine shutdown override panel Switches to lights, pumps, and windshield wipers Engine start and stop, port and starboard Jog controls to bow and stern thruster, flaps and trim tabs Compact refrigerator Sony BluRay DVD player DirecTV satellite television receiver Bose stereo Electric blinds, port and starboard and aft Main A.C./D.C. electrical distribution

---

## Galley

Laminate plank sole Portholes Recessed lights Breakers for galley services Blower over stovetop Stainless steel sink with cover Bosch 4-burner cooktop Microwave oven Miele dishwasher Overhead lockers Bosch refrigerator and freezer Marine Air air conditioning control

---

## Appliances

Bosch refrigerator Bosch 4-burner stovetop Miele dishwasher Ariston waterheater Miele clothes

washer/dryer Salon icemaker

---

## Under Forward Accommodations

---

Fiberglass black water tank Fiberglass gray water tank Ariston water heater Hold lights Air conditioning condensate sump tank with pump Freshwater supply manifolds Chilled water supply manifolds Bow thruster

---

## Master Stateroom

---

Carpeted sole Vinyl overhead Recessed overhead lights Porthole, port and starboard Nightstands, port and starboard, each with reading lamp Double island berth Sharp flat panel television Hanging locker with overhead light and Kidde 10BC dry chemical fire extinguisher, tag September 2011 Marine Air air conditioning controls Orion Alert/Locate marine signal kit, expiration August 2013 24" life ring Two type I life jackets First aid kit 8" ship's bell Handheld horn Dead lights port and starboard Electric blinds, port and starboard Bose stereo DirecTV sat to receiver

**Master Head:** Entrance via master stateroom, port aft Laminate sole Recessed overhead lights Tecma head GFCI outlet Porthole with miniblinds Vanity with sink, two hot/cold water faucets, storage Mirror above vanity Stall shower with overhead light, showerhead on hose and adjustable wall mount, hot/cold water faucet, glass door, overhead showerhead Sump tank with pump undersole

---

## Bow Stateroom

---

Carpeted sole Vinyl overhead with recessed lights Porthole, port and starboard, with electric blinds Reading light at head of berth, port and starboard MB Quart stereo Double berth Marine Air air conditioning panel Hanging locker, with light, port and starboard Sharp flat panel television 10BC dry chemical fire extinguisher **Bow Stateroom Head:** Entrance via bow stateroom, port aft Laminate sole Recessed lights Vanity with sink, hot/cold water faucet, storage Medicine locker with mirrored door Porthole with miniblinds Tecma head Stall shower with showerhead on hose and adjustable wall mount, hot/cold water faucet, overhead light, glass door, overhead showerhead

---

## Mid-Stateroom

---

Carpeted sole Vinyl overhead Recessed overhead lights Two portholes with miniblinds Two reading lights at head of berth Hanging locker with light Single berth Sharp flat panel television Marine Air air conditioning controls MB Quart stereo



**Mid Head:** Entrance via mid stateroom and forward companionway Laminate sole Recessed overhead lights Vanity with sink, hot/cold water faucet, and storage Mirrored panel, on forward bulkhead Tecma head Stall shower with, overhead light, showerhead on hose with adjustable wall mount, hot/cold

---

## Crew Stateroom

---

Entrance via ladder from aft deck Carpeted sole Vinyl overhead Recessed overhead lights Single berth Miele T8003 clothes dryer Miele W3003 clothes washer Alpine stereo Four type I life jackets

**Crew Head:** Laminate sole Molded sink with faucet which serves as shower head [on hose] Tecma toilet Porthole Composite overhead with recessed lights

---

## Exclusions

---

Owner's personal belongings.

---

## Disclaimer

---

The Company offers the details of this vessel or yacht in good faith but cannot guarantee or warrant the accuracy of this information nor warrant the condition of the vessel. A buyer should instruct his representatives, agents, or his surveyors, to investigate such details as the buyer desires validated. This vessel or yacht is offered subject to prior sale, price change, or withdrawal without notice.

# PHOTOS

64' Pershing AMBER

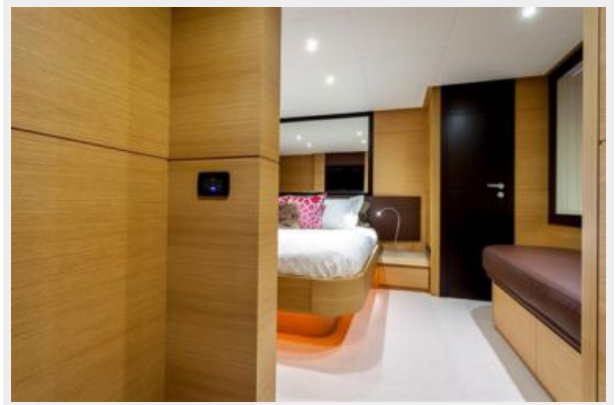


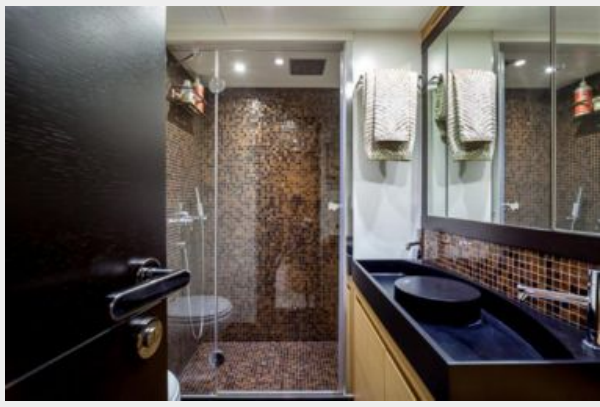
64' Pershing AMBER













# CONTACTS

---

Andrey Shestakov, leading yacht broker of the sales department of Shestakov Yacht Sales Inc. Shestakov Yacht Sales Inc., the official representative of the Miami/Fort Lauderdale FL headquarters.

## Contact details

---

Email: [andrey@shestakovyachtsales.com](mailto:andrey@shestakovyachtsales.com)

Web: [shestakovyachtsales.com/en/](http://shestakovyachtsales.com/en/)

## Telephones

---

USA: +1(954)274-4435

## Office hours

---

Monday – Saturday: **9:00 - 21:00** EDT

Sunday: **closed**

## Address

---



Harbour Towne Marina, 850 NE 3rd St,  
STE 213, Dania, FL 33004