

ROHE BOAT — SILVERTON



Builder: SILVERTON

Year Built: 1999

Model: Motor Yacht

Price: PRICE ON APPLICATION

Location: United States

LOA: 32' 2" (9.80m)

Beam: 12' 4" (3.76m)

Min Draft: 2' 11" (0.89m)

Max Draft: 3' 2" (0.97m)

Our experienced yacht broker, Andrey Shestakov, will help you choose and buy a yacht that best suits your needs **ROHE BOAT — SILVERTON** from our catalogue. Presently, at Shestakov Yacht Sales Inc., we have a wide variety of yachts available on our sale's list. We also work in close contact with all the big yacht manufacturers from all over the world.

If you would like to buy a yacht **ROHE BOAT — SILVERTON** or would like help answering any questions concerning purchasing, selling or chartering a yacht, please call **+1(954)274-4435**

TABLE OF CONTENTS

TABLE OF CONTENTS	2
SPECIFICATIONS	3
Overview	3
Basic Information	4
Dimensions	4
Speed, Capacities and Weight	5
Accommodations	5
Hull and Deck Information	5
Engine Information	5
PHOTOS	6
CONTACTS	8
Contact details	8
Telephones	8
Office hours	8
Address	8

SPECIFICATIONS

Overview

Manufacturer Provided Description

Before the Silverton 322 Motor Yacht, (37' LOA) finding two private staterooms and two private heads - one with a full stall shower - in a 32-footer would have been difficult. Silverton has created space that never existed before by incorporating the innovative "SideWalk" of the 322. By moving the salon out to the gunnels, the interior becomes much larger. The foredeck access is excellent with the wide, molded steps and sturdy rails. A high toe kick makes moving around safe and easy whether handling a line or setting the anchor. Aft, is a wide open aft deck with molded steps, not only up to the bridge, but also down to the extra-wide swim platform which comes complete with a swim ladder, transom shower, and cord storage.

A singular feature of the 322 is its amazing sleeping capacity of six people. In the bow, a double cabin with an offset bed has a head and shower adjacent to it, while aft to starboard is another double with a head across the hallway. The main salon has a u-shaped dinette and a lounge.

The galley features a two burner electric range and a full size AC/DC refrigerator– freezer.

The main options to consider are the diesel power, in the form of twin Volvo KAMD 43's and 5kW diesel generator.

Electronics

Furuno Radar model 821

Autopilot: Simrad CE32D TFT

GPS Plotter: Furuno

Fish Finder Depth Indicator: Interphase Vista

VHF Marine Radio: Uniden model Oceanus DSC Submersible.

Stereo: Clarion M455 AM/FM/CD/Sirius with remote control.

TV: Memorex and a DVD player.

Two automatic bilge pumps and a high water bilge alarm.

Carbon Monoxide Detectors

Electrical

120 volt 30 amp with two shore power inlets.

12 volt with two master battery selector switches.

Main Electric panel with circuit breakers and meters.

Charles C-Charger battery charger.

7.3 KW Diesel generator

Electric anchor windlass.

Basic Information

Category: Motor Yacht

Sub Category: Aft Cabin

Model Year: 2000

Year Built: 1999

Country: United States

Coast Guard #: 1189740

Vessel Top: 2353

Fly Bridge: Yes

Dimensions

LOA: 32' 2" (9.80m)

Beam: 12' 4" (3.76m)

Min Draft: 2' 11" (0.89m)

Max Draft: 3' 2" (0.97m)

Clearance: 13' 5" (4.09m)

MFG Length: 37' 0" (11.28m)

Speed, Capacities and Weight

Displacement: 19716 Pounds

Water Capacity: 72 Gallons

Holding Tank: 49 Gallons

Fuel Capacity: 200 Gallons

Accommodations

Total Cabins: 2

Sleeps: 6

Total Heads: 2

Hull and Deck Information

Hull Material: Fiberglass

Deck Material: Fiberglass

Hull Configuration: Deep Vee

Hull Color: White

Engine Information

Engines: 2

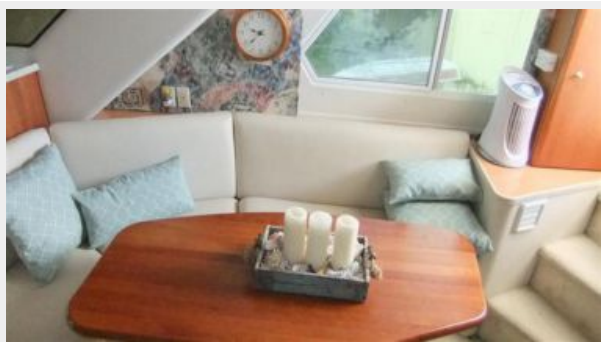
Manufacturer: Volvo Penta

Model: KAMD 43

Engine Type: Inboard

Fuel Type: Diesel

PHOTOS





CONTACTS

Andrey Shestakov, leading yacht broker of the sales department of Shestakov Yacht Sales Inc. Shestakov Yacht Sales Inc., the official representative of the Miami/Fort Lauderdale FL headquarters.

Contact details

Email: andrey@shestakovyachtsales.com

Web: shestakovyachtsales.com/en/

Telephones

USA: +1(954)274-4435

Office hours

Monday – Saturday: **9:00 - 21:00** EDT

Sunday: **closed**

Address



Harbour Towne Marina, 850 NE 3rd St,
STE 213, Dania, FL 33004