

DUTCHESS



Year Built: 1983

Model: Cruising/Racing Sailboat

Price: PRICE ON APPLICATION

LOA: 35' (10.67mm)

Beam: 11.58

Max Draft: 6' 6" (1.98mm)

Cruise Speed: 7 Knots Kts. (8 MPH)

Max Speed: 8 Knots Kts. (9 MPH)

Our experienced yacht broker, Andrey Shestakov, will help you choose and buy a yacht that best suits your needs **DUTCHESS** — n/a from our catalogue. Presently, at Shestakov Yacht Sales Inc., we have a wide variety of yachts available on our sale's list. We also work in close contact with all the big yacht manufacturers from all over the world.

If you would like to buy a yacht **DUTCHESS** — n/a or would like help answering any questions concerning purchasing, selling or chartering a yacht, please call **+1(954)274-4435**

TABLE OF CONTENTS

TABLE OF CONTENTS	2
SPECIFICATIONS	4
Basic Information	4
Dimensions	4
Speed, Capacities and Weight	4
Accommodations	4
Hull and Deck Information	4
Engine Information	5
PHOTOS	6
"Dutchess" at Rest	6
General layout of the Contest 35'	6
Heading North	6
Helmsmans view forward	6
Hand made wooden wheel with teak sole in cockpit	6
Binnacle & Ritchie compass	6
Stainless steel arch support	7
Yes!!! That's the Captain's chair at the helm	7
Aerogen #4 wind generator	7
Strong S/S arch support on transom	7
Powerful 2-speed self tailing winch	8
"Nearly New" 3 cylinder 40hp Yanmar Diesel	8
2-speed primary winches	8
Instrument pods on cabin top	8
Dinghy stored on deck	9
Electric windlass	9
Roller furler for your headsail & electric winch for anchoring	9
Ample storage for lines & gear in aft locker	9
Twin anchors on the bow	10

View of sole & covers for wheel & binnacle	10
"U" Shaped galley area	10
Double S/S sinks in the galley	10
Starboard settee w/LCD 20" TV	11
Additional sink in aft quarters	11
Aft cabin with private sink	11
Head & sink w/pullout shower head	11
Switch & breaker for windlass	12
Shaft	12
Engine gauges inboard	12
Breakers	12
Navigation station with VHF & short wave radio	13
View of electrical panel	13
Breakers for 12volt electrical	13
40hp Yanmar 3 cylinder engine	13
Bilge pump panel	14
Easy access to oil fill and filters	14
Propane shut-off	14
Stern portside	14
Folding 2-bladed prop	14
Keel being fared and re-painted	14
Portside view with portholes	15
Forward "V" Berth	15
CONTACTS	16
Contact details	16
Telephones	16
Office hours	16
Address	16

SPECIFICATIONS

Basic Information

Category: Cruising/Racing Sailboat

Sub Category: Cruising Sailboat

Model Year: 1983

Year Built: 1983

Dimensions

LOA: 35' (10.67mm)

LWL: 33' (10.06mm)

Beam: 11.58

Max Draft: 6' 6" (1.98mm)

Speed, Capacities and Weight

Cruise Speed: 7 Knots Kts. (8 MPH)

Max Speed: 8 Knots Kts. (9 MPH)

Water Capacity: 100 Gallons

Holding Tank: 7 Gal Gallons

Fuel Capacity: 25 Gal Gallons

Accommodations

Total Cabins: 2

Total Berths: 4

Sleeps: 6

Total Heads: 1

Hull and Deck Information

Hull Material: Fiberglass

Deck Material: Fiberglass

Hull Configuration: Fin & Spade

Engine Information

Engines: 1

Manufacturer: Yanmar

Engine Type: Inboard

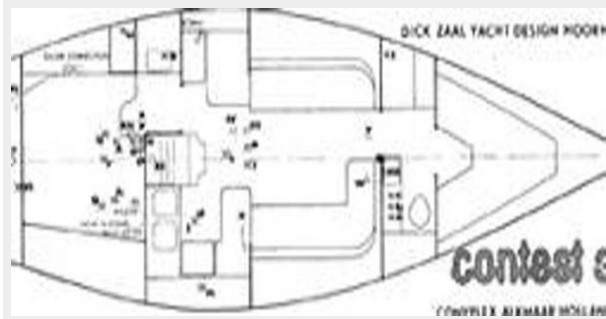
Fuel Type: Diesel

PHOTOS

"Dutchess" at Rest



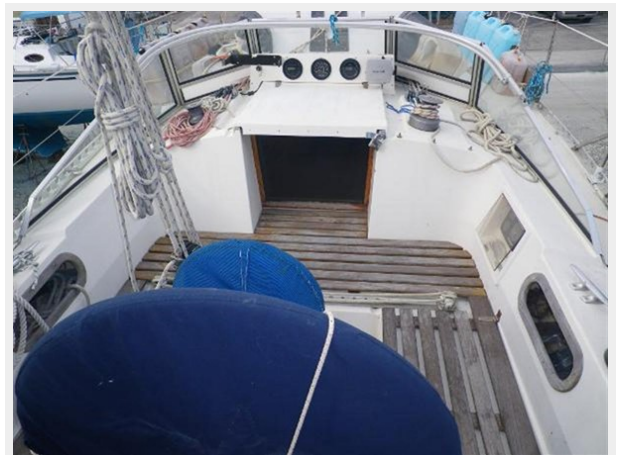
General layout of the Contest 35'



Heading North



Helmsmans view forward



Binnacle & Ritchie compass



Hand made wooden wheel with teak sole in cockpit



Yes!!! That's the Captain's chair at the helm



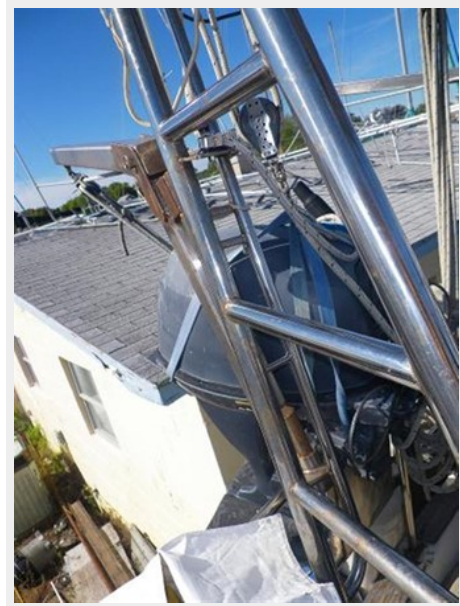
Stainless steel arch support



Aerogen #4 wind generator



Strong S/S arch support on transom



Powerful 2-speed self tailing winch



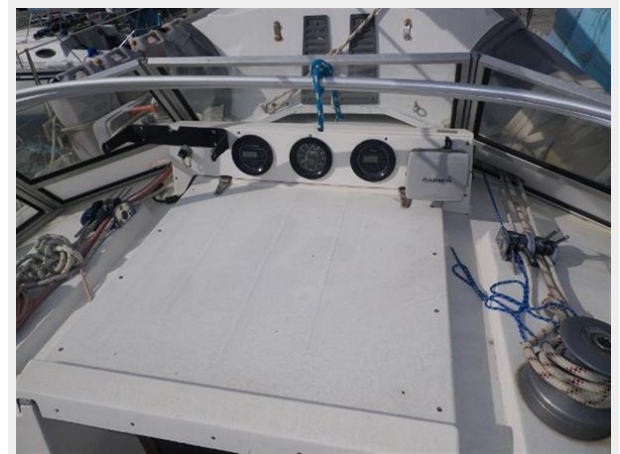
"Nearly New" 3 cylinder 40hp Yanmar Diesel



2-speed primary winches



Instrument pods on cabin top



Dinghy stored on deck



Electric windlass



Roller furler for your headsail & electric winch for anchoring



Ample storage for lines & gear in aft locker



Twin anchors on the bow



View of sole & covers for wheel & binnacle



"U" Shaped galley area



Double S/S sinks in the galley



Additional sink in aft quarters



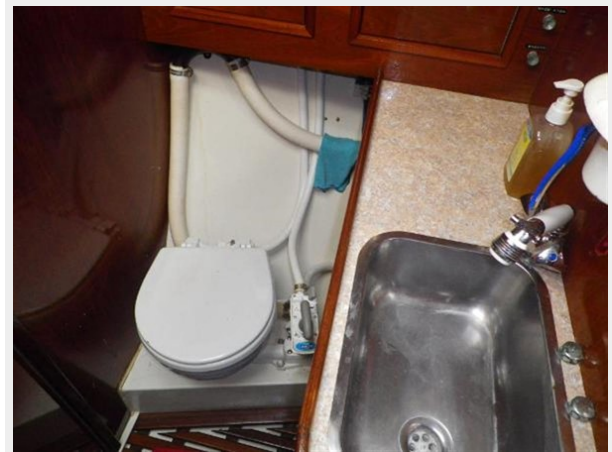
Starboard settee w/LCD 20" TV



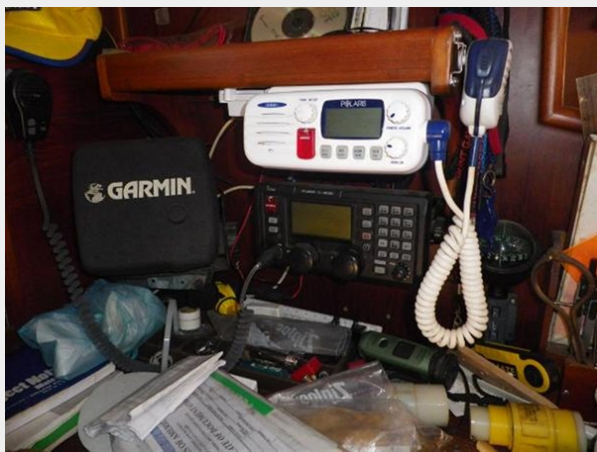
Aft cabin with private sink



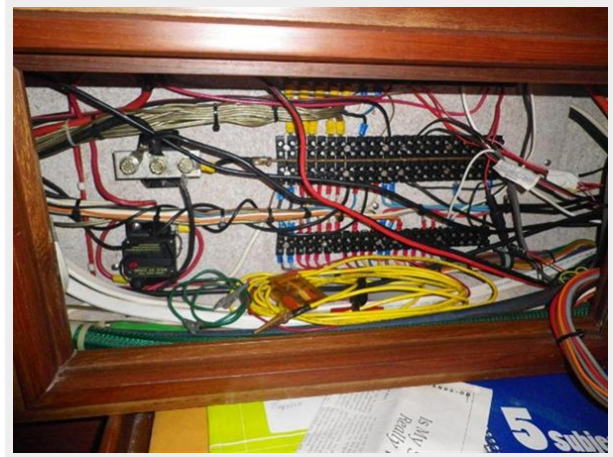
Head & sink w/pullout shower head



Navigation station with VHF & short wave radio



View of electrical panel



Breakers for 12volt electrical



40hp Yanmar 3 cylinder engine



Easy access to oil fill and filters



Bilge pump panel



Propane shut-off



Stern portside



Folding 2-bladed prop



Keel being fared and re-painted



Portside view with portholes



Forward "V" Berth



CONTACTS

Andrey Shestakov, leading yacht broker of the sales department of Shestakov Yacht Sales Inc. Shestakov Yacht Sales Inc., the official representative of the Miami/Fort Lauderdale FL headquarters.

Contact details

Email: andrey@shestakovyachtsales.com

Web: shestakovyachtsales.com/en/

Telephones

USA: +1(954)274-4435

Office hours

Monday – Saturday: **9:00 - 21:00** EDT

Sunday: **closed**

Address



Harbour Towne Marina, 850 NE 3rd St,
STE 213, Dania, FL 33004