

## 39' CARVER 2001 — CARVER



**Builder:** CARVER

**Year Built:** 2001

**Model:** Motor Yacht

**Price:** PRICE ON APPLICATION

**Location:** United States

**LOA:** 39' 0" (11.89m)

**Beam:** 13' 11" (4.24m)

**Max Draft:** 3' 6" (1.07m)

**Cruise Speed:** 17 Kts. (20 MPH)

Our experienced yacht broker, Andrey Shestakov, will help you choose and buy a yacht that best suits your needs 39' Carver 2001 — CARVER from our catalogue. Presently, at Shestakov Yacht Sales Inc., we have a wide variety of yachts available on our sale's list. We also work in close contact with all the big yacht manufacturers from all over the world.

If you would like to buy a yacht 39' Carver 2001 — CARVER or would like help answering any questions concerning purchasing, selling or chartering a yacht, please call +1(954)274-4435

# TABLE OF CONTENTS

|                                    |    |
|------------------------------------|----|
| TABLE OF CONTENTS                  | 2  |
| SPECIFICATIONS                     | 4  |
| Basic Information                  | 4  |
| Dimensions                         | 4  |
| Speed, Capacities and Weight       | 4  |
| Accommodations                     | 4  |
| Hull and Deck Information          | 4  |
| Engine Information                 | 5  |
| DETAILED INFORMATION               | 6  |
| Description                        | 6  |
| Electric                           | 6  |
| Additional Description             | 6  |
| Additional Description             | 8  |
| Additional Description             | 8  |
| Guest Stateroom                    | 9  |
| Master Head                        | 9  |
| Guest Head                         | 10 |
| Exclusions                         | 10 |
| Disclaimer                         | 10 |
| PHOTOS                             | 11 |
| Starboard Profile                  | 11 |
| Aft                                | 11 |
| Aft Seating                        | 11 |
| Starboard Cockpit                  | 11 |
| Salon / Galley - Facing Forward    | 12 |
| Salon                              | 12 |
| Salon / Starboard - Facing Forward | 12 |
| Salon                              | 12 |

---

|                  |    |
|------------------|----|
| Salon            | 13 |
| Galley           | 13 |
| Salon            | 13 |
| Galley           | 13 |
| Stairs / Hallway | 14 |
| Master Stateroom | 14 |
| Master Stateroom | 14 |
| Master Stateroom | 14 |
| Head             | 15 |
| Shower           | 15 |
| Head / Shower    | 15 |
| Head / Shower    | 15 |
| Controls         | 16 |
| Cruising         | 16 |
| CONTACTS         | 17 |
| Contact details  | 17 |
| Telephones       | 17 |
| Office hours     | 17 |
| Address          | 17 |

---

# SPECIFICATIONS

---

## Basic Information

---

**Category:** Motor Yacht

**Model Year:** 2001

**Year Built:** 2001

**Country:** United States

## Dimensions

---

**LOA:** 39' 0" (11.89m)

**Beam:** 13' 11" (4.24m)

**Max Draft:** 3' 6" (1.07m)

**Clearance:** 18' 0" (5.49m)

**MFG Length:** 40' 7" (12.37m)

## Speed, Capacities and Weight

---

**Cruise Speed:** 17 Kts. (20 MPH)

**Displacement:** 29500 Pounds

**Water Capacity:** 90 Gallons

**Holding Tank:** 72 Gallons

**Fuel Capacity:** 330 Gallons

## Accommodations

---

**Total Cabins:** 2

**Total Berths:** 4

**Total Heads:** 2

## Hull and Deck Information

---

**Hull Material:** Fiberglass

---

## Engine Information

---

**Manufacturer:** Volvo

**Model:** 7.4Gi

**Engine Type:** Inboard

**Fuel Type:** Gas/Petrol

---

## DETAILED INFORMATION

---

### Description

---

Introduced in the 2000, the 396 Motor Yacht was an overnight success. This aft cabin motor yacht has the aggressive styling of an express cruiser. Her unique raised walkdeck design has allowed design changes that gives a wider cabin - much roomier than one would expect.

Adding to her appeal, her cabin living space has been combined into a spacious, open "great room" with plenty of salon seating and space for all sorts of extra amenities, like an end table, TV and VCR.

Two luxurious staterooms and two head compartments provide welcome privacy, with the forward head compartment providing separate head and shower compartments.

### Electric

---

AC/DC distribution panels with magnetic circuit breakers and integral bilge blower controls

AC voltmeter

AC ammeter

Batteries (4) - deep cycle, marine (12V)

Battery chargers (2)

AC-DC converters

CATV, telephone

Ground Fault Circuit Interrupt (GFCI) protection - all 110V outlets

Shore power connector - 50 amp

Shore power cord - 50 ft

Wiring system - tinned copper strand wire, harnessed, color-coded, labeled, meets or exceeds ABYC standards.

### Additional Description

---

SALON - 110V outlets (3) -

GFCI protected.

AC and DC distribution panels.

Cabin stairway - integral, with cherry wood hand rail.

Carpet - beige, tufted cut pile, 65 oz., crush-resistant, 100% nylon.

Designer decor.

Endtables (2) - integral, solid surface top, at either end of lounge.

Entertainment group - TV and VCR, with wiring for 2 speakers each in salon, master stateroom, and aft deck hardtop.

Entrance door - acrylic, curved, sliding, handle lock, with interior screen.

Floor access hatches - engine room and amidships bilge.

Fresh air system - passive, with controllable overhead vents.

Hardware highlights - brass/chrome. Lights (9) - halogen, overhead, recessed.

Lounge - Flexsteel, chamois UltraLeather, with double incliners, 70" corner extension and 36" end.

Miniblinds - decor-matched.

Rocker light switches.

Sofa - chamois UltraLeather, storage beneath.

Solid surface countertops.

Stereo speakers (2).

Storage cabinets (2) - in aft bulkhead.

Table - free-standing, elevating top.

Telephone connector.

Window vents (2).

MASTER STATEROOM - 110V outlets (3) - GFCI protected.

Bedside endtables - solid surface top, storage beneath.

Berth - queen, inner-spring mattress, offset island.

Carpet - beige, tufted cut pile, 65 oz., crush-resistant, 100% nylon.

DC distribution panel - 12V safety systems.

Entrance door - secures closed, integral doorstop, stainless steel hardware.

Hanging locker - cedar-lined, carpeted, 16" hanging bar, shelf, automatic light.

Hanging locker - 17" hanging bar.

Hardware highlights - brass/chrome. Lights (2) - halogen, reading, recessed.

Lights (3) - halogen, overhead, recessed.

Miniblinds - decor-matched.

Portlights (2) - screened.

Rocker light switches.

Stereo speakers (2).

Storage cabinets (7).

Storage drawers (5).

Telephone connector.

Window - removable, tinted, in aft bulkhead.

---

## Additional Description

110V outlet - GFCI protected. Coffee maker. Designer decor. Flooring - wood plank. Hardware highlights - brass/chrome. Lights (2) - halogen, overhead, recessed. Microwave/convection oven - built-in. Range - electric, three-burner, ceran top. Refrigerator/freezer (upright). Rocker light switches. Sink - stainless steel, with solid surface cover. Solid surface countertops. Storage - under sink. Storage drawers. Storage cabinets. Anodes - zinc, sacrificial. Battery master disconnect switches. Battery restraint brackets. Bilge blowers (12V). Bilge pumps (3) - 1500 gph each, automatic/manual operation. Brass valves for all underwater thru-hulls. CO detectors in salon and staterooms. Compass - illuminated. Engine alarms - temperature and oil pressure. Fire suppression system - automatic, FE241 (FM200 in European Community). Galvanic isolator/zinc saver. Horn - air/electric (12V), trumpet. Internal bonding system. Molded nonskid surfaces on all walk decks - diamond pattern. Navigation lights (COLREGS).

---

## Additional Description

Solid fiberglass hull bottoms with Knytex substrates and Vinylester barrier coat. Hand-laid, molded fiberglass components featuring composite laminate hullsides, decks, and cabintops.



Molded fiberglass stringer system. Structural engine mountings - reinforced stringer mountings with gusseted, angle steel plates. Fabricated aluminum floor frames with stainless steel stanchions. Cherry wood bulkheads, cabinetry, and trim throughout cabin, with high gloss finish. Tinted, tempered safety glass frameless window systems. Unitized deck and cabintop construction with integral aluminum truss reinforcement in cabintop structure. AFT DECK - 73 ft<sup>2</sup> (approx.), integral to deck, self-draining. Cleats (2) - 10" stainless steel, through-bolted through aluminum backing plate, inboard-mounted with stainless steel hawse pipes. Command bridge stairway - integral to deck with stainless steel hand rail. Electronics arch - custom aluminum with acrylic polyurethane surface coating and UV protection. Electronics arch access plates (5) - corrosion-resistant polymer attached with noncorroding screws and waterproof sealant. Grab rail - 25" stainless steel, across lockers. Hand rail - 1.0" OD, stainless steel, around entire aft deck. Hardtop over entire aft deck. Lights (4) - courtesy, recessed, with exterior-mounted switch. Lights (2) - overhead, recessed, with exterior-mounted switch. Lockers (2) - upper and lower, double doors, interior stainless steel restraining rail. Stereo speakers (2). Transom door - aluminum, stainless steel hardware, with 22" grab rail across top. Wing doors (2) - secure open and closed, acrylic in aluminum frame, stainless steel hardware, provide access to the side decks. SIDE DECKS - Bow rail - 1.0" O.D., lineal-buffed, welded stainless steel, with additional intermediate rail amidships and forward. Bow rail stanchions - double-welded (inside and outside), stainless steel, anchored to aluminum backing plates laminated into deck. Cleats (4) - 10" spring, stainless steel, through-bolted through aluminum backing plate. Deck toe rail. Grab rail - stainless steel, over cabin windows, running length of cabin and above windshields. Rub rail molding - heavy-duty, stainless steel insert. FORE DECK - Cleats (2) - 10" stainless steel, through-bolted through aluminum backing plate. Cleat - 10" stainless steel for anchor line, through-bolted through aluminum backing plate. Locker - in-deck, self-draining, for fender storage and anchor chain. Over-the-stem anchor roller.

## Guest Stateroom

---

10V outlets (2) - GFCI protected. Bedside endtables - solid surface top. Berth - queen, island. Carpet - beige, tufted cut pile, 65 oz., crush-resistant, 100% nylon. Designer curtains - decor-matched. Designer decor. Entrance door - pocket-style, secures open and closed, stainless steel hardware. Hanging locker - cedar-lined, two 8.5" hanging bars, automatic light, integral door stop. Hardware highlights - brass/chrome. Lights (5) - halogen, overhead, recessed. Mirrored headboard. Overhead hatch - circular, 20.5" diameter, lockable, inside screen, over berth. Portlights (2) - screened. Rocker light switches. Step-ups next to berth - carpeted. Storage - beneath berth. Storage cabinets (4). Telephone connector.

## Master Head

---

110V outlet - GFCI protected. Entrance door - secures closed, integral doorstop, stainless steel hardware. Hardware highlights - brass/chrome. Head fan. Lights (2) - halogen, overhead, recessed. Medicine cabinet - mirrored, 2 shelves. Portlights (2) - screened, privacy glass. Rocker light switches. Soap dish - wall-mounted, solid glass, brass/chrome highlights. Toilet - electric

flush, pedestal. Toilet paper holder - mounted in vanity cabinet. Towel ring. Vanity - solid surface top and backsplash, undermounted stainless steel sink, drawer below, cabinet below with door. SHOWER STALL - Entrance door - secures closed, acrylic in aluminum frame. Integral bench seat. Light - halogen, overhead, recessed. Shower head - adjustable height, detachable for use as handshower. Towel bar - 14".

---

## Guest Head

---

110V outlet - GFCI protected. Clothes hook on entrance door. Entrance door - secures closed, integral doorstop, stainless steel hardware. Hardware highlights - brass/chrome. Head fan. Lights (2) - halogen, overhead, recessed. Medicine cabinets (3) - mirrored, 2 shelves. Portlight - screened, privacy glass. Rocker light switch. Toilet - electric flush, pedestal. Toilet paper holder. Towel ring. Vanity - solid surface top and backsplash, undermounted stainless steel sink, drawer below, 2 shelves below with door. SHOWER STALL - Designer shower curtain - decor-matched. Entrance door - secures closed, stainless steel hardware, integral doorstop. Grab rail - 29.5" stainless steel. Integral bench seat. Light - halogen, overhead, recessed. Portlight - screened, privacy glass. Shower accessories cabinet - 2 mirrored doors. Shower head - adjustable height, detachable for use as handshower.

---

## Exclusions

---

Owner's personal belongings.

---

## Disclaimer

---

The Company offers the details of this vessel or yacht in good faith but cannot guarantee or warrant the accuracy of this information nor warrant the condition of the vessel. A buyer should instruct his representatives, agents, or his surveyors, to investigate such details as the buyer desires validated. This vessel or yacht is offered subject to prior sale, price change, or withdrawal without notice.

# PHOTOS

**Starboard Profile**



**Aft**



**Aft Seating**



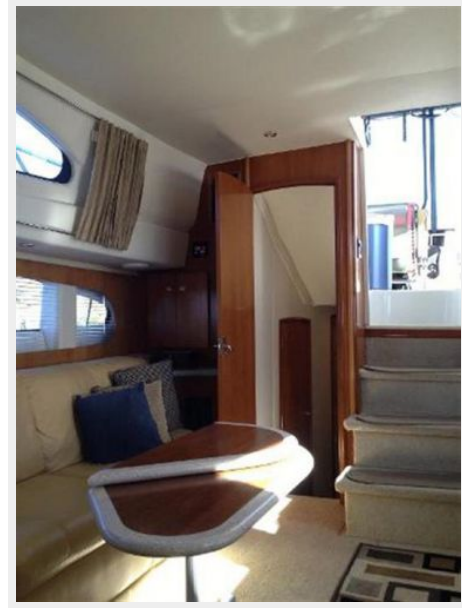
**Starboard Cockpit**



**Salon / Galley - Facing Forward**



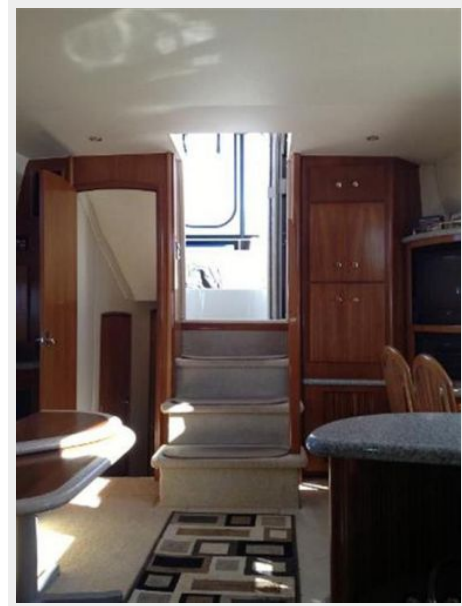
**Salon**



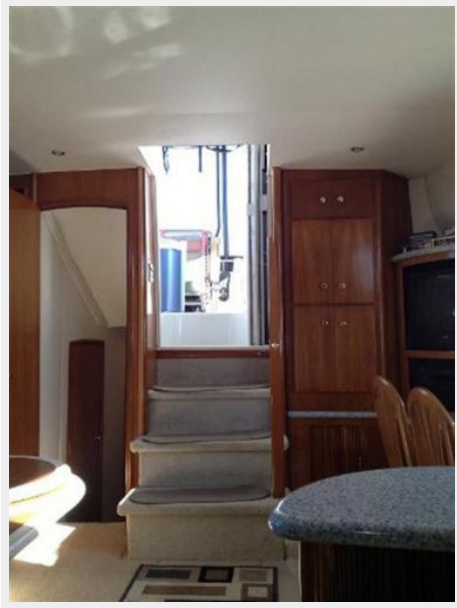
**Salon / Starboard - Facing Forward**



**Salon**



Salon



Galley



Salon



Galley





**Stairs / Hallway**



**Master Stateroom**



**Master Stateroom**



**Master Stateroom**



Head



Shower



Head / Shower



Head / Shower



## Controls



## Cruising





# CONTACTS

---

Andrey Shestakov, leading yacht broker of the sales department of Shestakov Yacht Sales Inc. Shestakov Yacht Sales Inc., the official representative of the Miami/Fort Lauderdale FL headquarters.

## Contact details

---

Email: [andrey@shestakovyachtsales.com](mailto:andrey@shestakovyachtsales.com)

Web: [shestakovyachtsales.com/en/](http://shestakovyachtsales.com/en/)

## Telephones

---

USA: +1(954)274-4435

## Office hours

---

Monday – Saturday: **9:00 - 21:00** EDT

Sunday: **closed**

## Address

---



Harbour Towne Marina, 850 NE 3rd St,  
STE 213, Dania, FL 33004