

39' CARVER 2001 — CARVER



Судостроитель: CARVER

Год постройки: 2001

Модель: Моторная яхта

Цена: **ЦЕНА ЯХТЫ ПО ЗАПРОСУ**

Местонахождение: United States

Длина общая: 39' 0" (11.89m)

Ширина: 13' 11" (4.24m)

Макс. осадка: 3' 6" (1.07m)

Крейс. скорость: 17 Kts. (20 MPH)

Купить 39' Carver 2001 — CARVER а также выбрать подходящую вам яхту из нашего каталога яхт вам поможет опытный яхтенный брокер Андрей Шестаков. На сегодняшний день компания Shestakov Yacht Sales Inc. имеет большое количество яхт в собственном списке продаж, а также тесно сотрудничает со всеми крупными яхтенными производителями по всему миру.

Для того чтобы купить яхту 39' Carver 2001 — CARVER а также проконсультироваться по любому вопросу связанному с покупкой, продажей, чартером яхт позвоните по телефону **+7(918)465-66-44**.

ОГЛАВЛЕНИЕ

ОГЛАВЛЕНИЕ	2
ХАРАКТЕРИСТИКИ	4
Основная информация	4
Размеры	4
Скорость, вместимость и масса	4
Размещение	4
Корпус и палуба	4
Информация о двигателе	5
ПОДРОБНОЕ ОПИСАНИЕ	6
Description	6
Electric	6
Additional Description	6
Additional Description	8
Additional Description	8
Guest Stateroom	9
Master Head	9
Guest Head	10
Исключения	10
Отказ от ответственности	10
ФОТОГРАФИИ	11
Starboard Profile	11
Aft	11
Aft Seating	11
Starboard Cockpit	11
Salon / Galley - Facing Forward	12
Salon	12
Salon / Starboard - Facing Forward	12
Salon	12

Salon	13
Galley	13
Salon	13
Galley	13
Stairs / Hallway	14
Master Stateroom	14
Master Stateroom	14
Master Stateroom	14
Head	15
Shower	15
Head / Shower	15
Head / Shower	15
Controls	16
Cruising	16
КОНТАКТЫ	17
Контактная информация	17
Телефоны	17
Время работы	17
Адрес	17

ХАРАКТЕРИСТИКИ

Основная информация

Тип судна: Моторная яхта

Модельный год: 2001

Год постройки: 2001

Страна: United States

Размеры

Длина общая: 39' 0" (11.89m)

Ширина: 13' 11" (4.24m)

Макс. осадка: 3' 6" (1.07m)

Трапы: 18' 0" (5.49m)

Длина привального бруса: 40' 7"
(12.37m)

Скорость, вместимость и масса

Крейс. скорость: 17 Kts. (20 MPH)

Водоизмещение: 29500 Pounds

Вместимость воды: 90 Gallons

Вместимость сточного бака: 72 Gallons

Объем топливного бака: 330 Gallons

Размещение

Всего кают: 2

Всего коек: 4

Всего ком. состава: 2

Корпус и палуба

Материал корпуса: Fiberglass

Информация о двигателе

Производитель: Volvo

Модель: 7.4Gi

Тип двигателя: Inboard

Тип топлива: Gas/Petrol

ПОДРОБНОЕ ОПИСАНИЕ

Description

Introduced in the 2000, the 396 Motor Yacht was an overnight success. This aft cabin motor yacht has the aggressive styling of an express cruiser. Her unique raised walkdeck design has allowed design changes that gives a wider cabin - much roomier than one would expect.

Adding to her appeal, her cabin living space has been combined into a spacious, open "great room" with plenty of salon seating and space for all sorts of extra amenities, like an end table, TV and VCR.

Two luxurious staterooms and two head compartments provide welcome privacy, with the forward head compartment providing separate head and shower compartments.

Electric

AC/DC distribution panels with magnetic circuit breakers and integral bilge blower controls

AC voltmeter

AC ammeter

Batteries (4) - deep cycle, marine (12V)

Battery chargers (2)

AC-DC converters

CATV, telephone

Ground Fault Circuit Interrupt (GFCI) protection - all 110V outlets

Shore power connector - 50 amp

Shore power cord - 50 ft

Wiring system - tinned copper strand wire, harnessed, color-coded, labeled, meets or exceeds ABYC standards.

Additional Description

SALON - 110V outlets (3) -

GFCI protected.

AC and DC distribution panels.

Cabin stairway - integral, with cherry wood hand rail.

Carpet - beige, tufted cut pile, 65 oz., crush-resistant, 100% nylon.

Designer decor.

Endtables (2) - integral, solid surface top, at either end of lounge.

Entertainment group - TV and VCR, with wiring for 2 speakers each in salon, master stateroom, and aft deck hardtop.

Entrance door - acrylic, curved, sliding, handle lock, with interior screen.

Floor access hatches - engine room and amidships bilge.

Fresh air system - passive, with controllable overhead vents.

Hardware highlights - brass/chrome. Lights (9) - halogen, overhead, recessed.

Lounge - Flexsteel, chamois UltraLeather, with double incliners, 70" corner extension and 36" end.

Miniblinds - decor-matched.

Rocker light switches.

Sofa - chamois UltraLeather, storage beneath.

Solid surface countertops.

Stereo speakers (2).

Storage cabinets (2) - in aft bulkhead.

Table - free-standing, elevating top.

Telephone connector.

Window vents (2).

MASTER STATEROOM - 110V outlets (3) - GFCI protected.

Bedside endtables - solid surface top, storage beneath.

Berth - queen, inner-spring mattress, offset island.

Carpet - beige, tufted cut pile, 65 oz., crush-resistant, 100% nylon.

DC distribution panel - 12V safety systems.

Entrance door - secures closed, integral doorstop, stainless steel hardware.

Hanging locker - cedar-lined, carpeted, 16" hanging bar, shelf, automatic light.

Hanging locker - 17" hanging bar.

Hardware highlights - brass/chrome. Lights (2) - halogen, reading, recessed.

Lights (3) - halogen, overhead, recessed.

Miniblinds - decor-matched.

Portlights (2) - screened.

Rocker light switches.

Stereo speakers (2).

Storage cabinets (7).

Storage drawers (5).

Telephone connector.

Window - removable, tinted, in aft bulkhead.

Additional Description

110V outlet - GFCI protected. Coffee maker. Designer decor. Flooring - wood plank. Hardware highlights - brass/chrome. Lights (2) - halogen, overhead, recessed. Microwave/convection oven - built-in. Range - electric, three-burner, ceran top. Refrigerator/freezer (upright). Rocker light switches. Sink - stainless steel, with solid surface cover. Solid surface countertops. Storage - under sink. Storage drawers. Storage cabinets. Anodes - zinc, sacrificial. Battery master disconnect switches. Battery restraint brackets. Bilge blowers (12V). Bilge pumps (3) - 1500 gph each, automatic/manual operation. Brass valves for all underwater thru-hulls. CO detectors in salon and staterooms. Compass - illuminated. Engine alarms - temperature and oil pressure. Fire suppression system - automatic, FE241 (FM200 in European Community). Galvanic isolator/zinc saver. Horn - air/electric (12V), trumpet. Internal bonding system. Molded nonskid surfaces on all walk decks - diamond pattern. Navigation lights (COLREGS).

Additional Description

Solid fiberglass hull bottoms with Knytex substrates and Vinylester barrier coat. Hand-laid, molded fiberglass components featuring composite laminate hullsides, decks, and cabintops.

Molded fiberglass stringer system. Structural engine mountings - reinforced stringer mountings with gusseted, angle steel plates. Fabricated aluminum floor frames with stainless steel stanchions. Cherry wood bulkheads, cabinetry, and trim throughout cabin, with high gloss finish. Tinted, tempered safety glass frameless window systems. Unitized deck and cabintop construction with integral aluminum truss reinforcement in cabintop structure. AFT DECK - 73 ft² (approx.), integral to deck, self-draining. Cleats (2) - 10" stainless steel, through-bolted through aluminum backing plate, inboard-mounted with stainless steel hawse pipes. Command bridge stairway - integral to deck with stainless steel hand rail. Electronics arch - custom aluminum with acrylic polyurethane surface coating and UV protection. Electronics arch access plates (5) - corrosion-resistant polymer attached with noncorroding screws and waterproof sealant. Grab rail - 25" stainless steel, across lockers. Hand rail - 1.0" OD, stainless steel, around entire aft deck. Hardtop over entire aft deck. Lights (4) - courtesy, recessed, with exterior-mounted switch. Lights (2) - overhead, recessed, with exterior-mounted switch. Lockers (2) - upper and lower, double doors, interior stainless steel restraining rail. Stereo speakers (2). Transom door - aluminum, stainless steel hardware, with 22" grab rail across top. Wing doors (2) - secure open and closed, acrylic in aluminum frame, stainless steel hardware, provide access to the side decks. SIDE DECKS - Bow rail - 1.0" O.D., lineal-buffed, welded stainless steel, with additional intermediate rail amidships and forward. Bow rail stanchions - double-welded (inside and outside), stainless steel, anchored to aluminum backing plates laminated into deck. Cleats (4) - 10" spring, stainless steel, through-bolted through aluminum backing plate. Deck toe rail. Grab rail - stainless steel, over cabin windows, running length of cabin and above windshields. Rub rail molding - heavy-duty, stainless steel insert. FORE DECK - Cleats (2) - 10" stainless steel, through-bolted through aluminum backing plate. Cleat - 10" stainless steel for anchor line, through-bolted through aluminum backing plate. Locker - in-deck, self-draining, for fender storage and anchor chain. Over-the-stem anchor roller.

Guest Stateroom

10V outlets (2) - GFCI protected. Bedside endtables - solid surface top. Berth - queen, island. Carpet - beige, tufted cut pile, 65 oz., crush-resistant, 100% nylon. Designer curtains - decor-matched. Designer decor. Entrance door - pocket-style, secures open and closed, stainless steel hardware. Hanging locker - cedar-lined, two 8.5" hanging bars, automatic light, integral door stop. Hardware highlights - brass/chrome. Lights (5) - halogen, overhead, recessed. Mirrored headboard. Overhead hatch - circular, 20.5" diameter, lockable, inside screen, over berth. Portlights (2) - screened. Rocker light switches. Step-ups next to berth - carpeted. Storage - beneath berth. Storage cabinets (4). Telephone connector.

Master Head

110V outlet - GFCI protected. Entrance door - secures closed, integral doorstop, stainless steel hardware. Hardware highlights - brass/chrome. Head fan. Lights (2) - halogen, overhead, recessed. Medicine cabinet - mirrored, 2 shelves. Portlights (2) - screened, privacy glass. Rocker light switches. Soap dish - wall-mounted, solid glass, brass/chrome highlights. Toilet - electric

flush, pedestal. Toilet paper holder - mounted in vanity cabinet. Towel ring. Vanity - solid surface top and backsplash, undermounted stainless steel sink, drawer below, cabinet below with door. SHOWER STALL - Entrance door - secures closed, acrylic in aluminum frame. Integral bench seat. Light - halogen, overhead, recessed. Shower head - adjustable height, detachable for use as handshower. Towel bar - 14".

Guest Head

110V outlet - GFCI protected. Clothes hook on entrance door. Entrance door - secures closed, integral doorstop, stainless steel hardware. Hardware highlights - brass/chrome. Head fan. Lights (2) - halogen, overhead, recessed. Medicine cabinets (3) - mirrored, 2 shelves. Portlight - screened, privacy glass. Rocker light switch. Toilet - electric flush, pedestal. Toilet paper holder. Towel ring. Vanity - solid surface top and backsplash, undermounted stainless steel sink, drawer below, 2 shelves below with door. SHOWER STALL - Designer shower curtain - decor-matched. Entrance door - secures closed, stainless steel hardware, integral doorstop. Grab rail - 29.5" stainless steel. Integral bench seat. Light - halogen, overhead, recessed. Portlight - screened, privacy glass. Shower accessories cabinet - 2 mirrored doors. Shower head - adjustable height, detachable for use as handshower.

Исключения

При продаже яхты исключаются личные вещи владельца.

Отказ от ответственности

Компания предоставляет описание судна или яхты добросовестно, но не может гарантировать точность этой информации, а также не ручается за техническое состояние. Покупатель должен проинструктировать своих агентов или оценщиков исследовать представленную информацию более подробно, по собственному желанию. Продажа судна или яхты, изменение цены или снятие с продажи будет происходить без предварительного уведомления.

ФОТОГРАФИИ

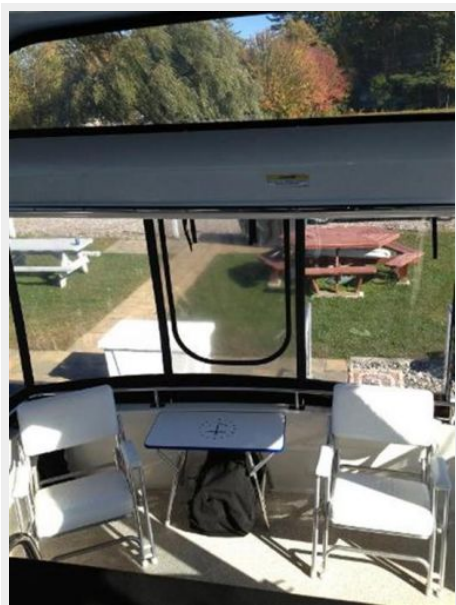
Starboard Profile



Aft



Aft Seating



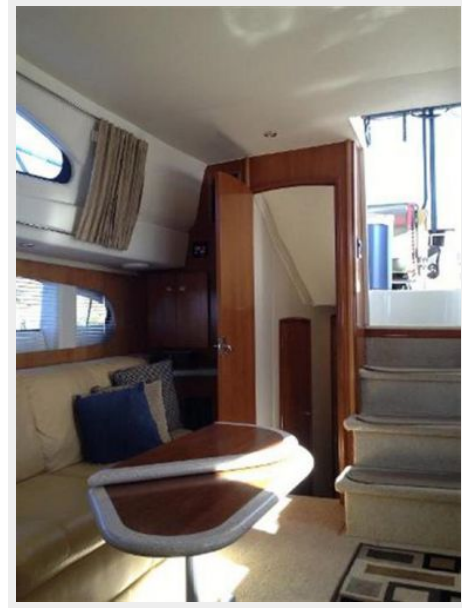
Starboard Cockpit



Salon / Galley - Facing Forward



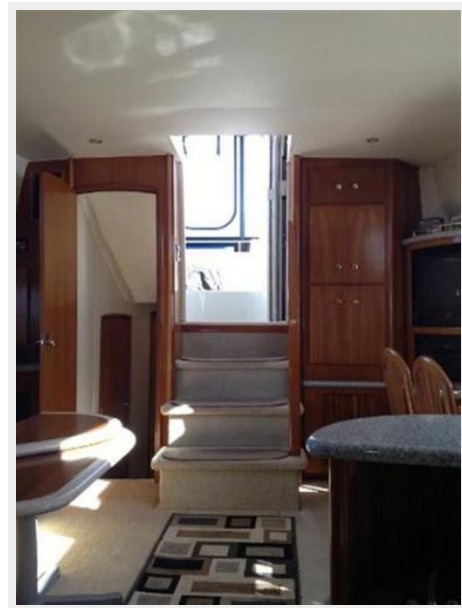
Salon



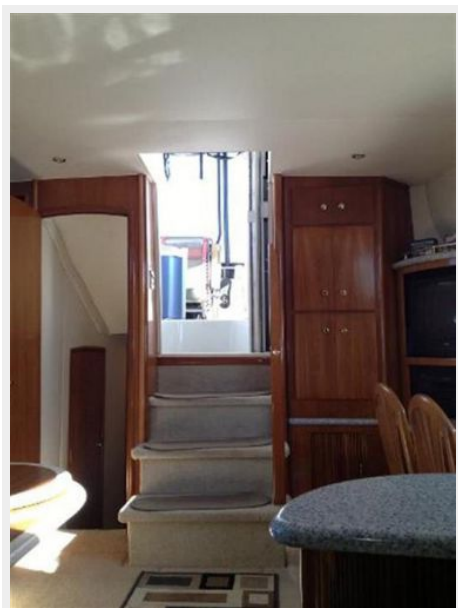
Salon / Starboard - Facing Forward



Salon



Salon



Galley



Salon



Galley



Stairs / Hallway



Master Stateroom



Master Stateroom



Master Stateroom



Head



Shower



Head / Shower



Head / Shower



Controls



Cruising



КОНТАКТЫ

Андрей Шестаков (Andrey Shestakov) – ведущий яхтенный брокер отдела продаж яхт и судов компании Shestakov Yacht Sales Inc. Официальный представитель Shestakov Yacht Sales Inc. для русскоговорящих клиентов в центральном офисе компании в Майами/Форт Лодердейл/Флорида/США.

Контактная информация

Email: andrey@shestakovyachtsales.com

Web: shestakovyachtsales.com

Телефоны

Краснодарский край: **+7(918)465-66-44**

США, Майами, Флорида: **+1(954)274-4435**

Время работы

Понедельник – Суббота: **9:00 - 21:00**
EDT

Воскресенье: **Закрито**

Адрес



Harbour Towne Marina, 850 NE 3rd St,
STE 213, Dania, FL 33004