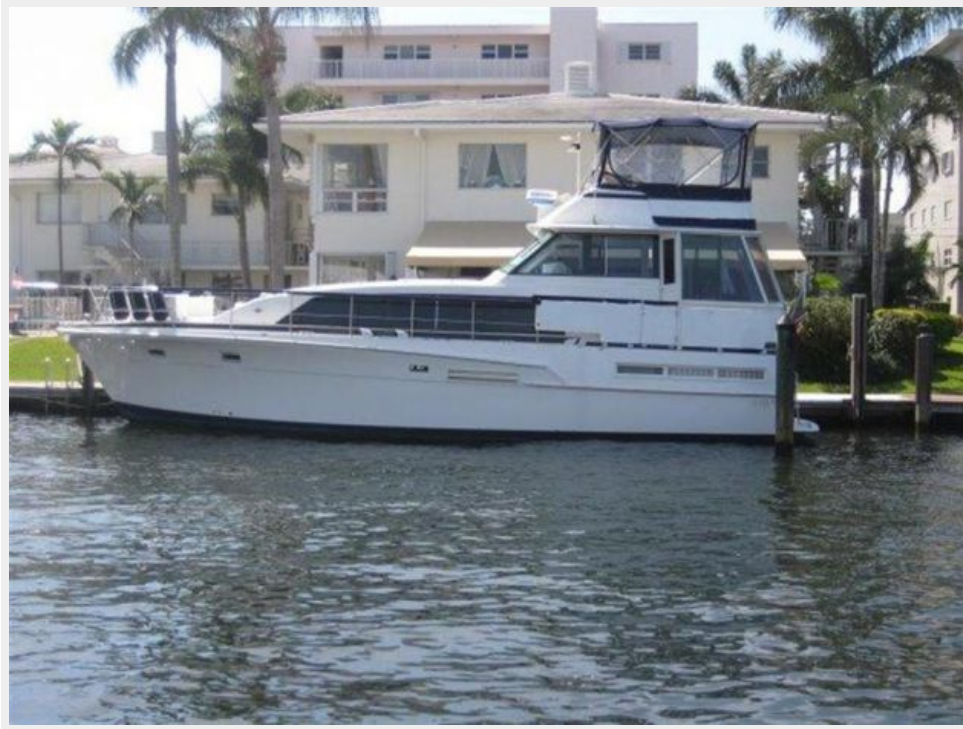


STARDUST — BERTRAM



Builder: BERTRAM

Year Built: 1982

Model: Motor Yacht

Price: PRICE ON APPLICATION

Location: United States

LOA: 46' 0" (14.02m)

Beam: 16' 0" (4.88m)

Max Draft: 4' 8" (1.42m)

Cruise Speed: 18 Kts. (21 MPH)

Max Speed: 23 Kts. (26 MPH)

Our experienced yacht broker, Andrey Shestakov, will help you choose and buy a yacht that best suits your needs **Stardust — BERTRAM** from our catalogue. Presently, at Shestakov Yacht Sales Inc., we have a wide variety of yachts available on our sale's list. We also work in close contact with all the big yacht manufacturers from all over the world.

If you would like to buy a yacht **Stardust — BERTRAM** or would like help answering any questions concerning purchasing, selling or chartering a yacht, please call **+1(954)274-4435**

TABLE OF CONTENTS

TABLE OF CONTENTS	2
SPECIFICATIONS	3
Overview	3
Basic Information	3
Dimensions	3
Speed, Capacities and Weight	3
Accommodations	3
Hull and Deck Information	3
Engine Information	4
DETAILED INFORMATION	5
Introduction	5
Interior	5
Deck Equipment	5
Electronics	5
Audio & Visual Equipment	6
Remarks	6
Exclusions	6
Disclaimer	6
PHOTOS	8
CONTACTS	13
Contact details	13
Telephones	13
Office hours	13
Address	13

SPECIFICATIONS

Overview

PRICE DROPPED TO \$169,000 Super clean quality built flush deck Bertram yacht --- Excellent condition --- Great accommodations --- Very low hours --- All systems just serviced --- ready to go anywhere --- Captain maintained --- Truly a lot of boat for this price --- long time owner --- easy to view --- Health issues force sale --- Owner looking for offers.

Basic Information

Category: Motor Yacht

Model Year: 1982

Year Built: 1982

Country: United States

Dimensions

LOA: 46' 0" (14.02m)

Beam: 16' 0" (4.88m)

Max Draft: 4' 8" (1.42m)

Clearance: 18' 8" (5.69m)

Speed, Capacities and Weight

Cruise Speed: 18 Kts. (21 MPH)

Max Speed: 23 Kts. (26 MPH)

Displacement: 45600 Pounds

Water Capacity: 230 Gallons

Fuel Capacity: 615 Gallons

Accommodations

Total Cabins: 2

Total Heads: 2

Hull and Deck Information

Hull Material: Fiberglass

Engine Information

Engines: 2

Manufacturer: Detroit Diesel

Model: 8V92TI

Engine Type: Inboard

Fuel Type: Diesel

DETAILED INFORMATION

Introduction

Spacious interior accommodations and flush deck styling. Solid construction and exceptional seakeeping qualities. Contact broker for introduction to this fine vessel!

Interior

Vessel features a 2 cabin, 2 head layout with mica and teak interior and carpeting throughout. The Master Stateroom is located aft with double beds outboard to both port & starboard. Ensuite head with tub/shower. The forward cabin comes with V-berth and abundant storage. Guest head is to port with shower. The galley is to starboard with dining table opposite with built in seating. The salon is large and airy with large windows. There is an L-shaped sofa to starboard and aft. A sliding shutter can close off the salon from the dining area.

Deck Equipment

- Bimini top with blue canvas
- Full flybridge enclosure
- Canvas covers for exterior equipment
- Deck storage boxes
- Transom gate
- Fender holders forward to port & starboard

Electronics

Lower Station:

- 5" Ritchie compass
- Robertson F100 autopilot
- Northstar 800 GPS
- Northstar 800 Loran
- ICOM IC-M302 VHF
- ICOM IC-M710 SSB
- Datamarine depthfinder
- Datamarine & GPS speed log

Upper Station:

- 5" Ritchie compass
- Robertson AP 200 DL autopilot

- Furuno Model #1832 radar
- Northstar 800 + Raymarine E120 GPS
- Raymarine E120 chartplotter
- Northstar 800 Loran
- West Marine VHF

Audio & Visual Equipment

- Sony TV - Salon, Forward Cabin, Aft Cabin
- Sony DVD - Salon
- Sony Combi VCR/DVD player - Aft Cabin
- Sony AM/FM CD player in locker w/ remote - upper helm

Remarks

Owner has owned the vessel for about 23 years and has either renewed or maintained the vessel to the highest of standards. There are numerous up-upgrades and additional equipment that all come together to take a sought after classic motor yacht to a new level of excellence and a much sought after yacht on the market.

Some of the work included rebuilding both main engines and transmissions, new generator, new wiring and new plumbing.

New Hynautic engine controls, new stainless steel exhaust, new dripless shaft seals along with new shafts. All sea water hoses have been renewed along with double hose clamps and all thru hull valves fully serviced plus a new battery charger has been installed.

All of the exterior canvas covers, life lines, weather boards, enclosure and exterior cushions are all new along with new and upgraded electronics. The original aluminum rub rails have been removed and renewed with heavy duty plastic and stainless steel. The cabin trunk has been fully painted and new cushions have been installed on the aft deck.

The interior has upgraded wall coverings, carpets, wood trim and soft furnishings. The appliances have been renewed, a new icemaker has been installed in the wheelhouse, and the air conditioning system fully serviced. The entertainment equipment, the heads and the fresh water system have also been renewed. A new Lectra San system has been installed.

Exclusions

Owner's personal belongings.

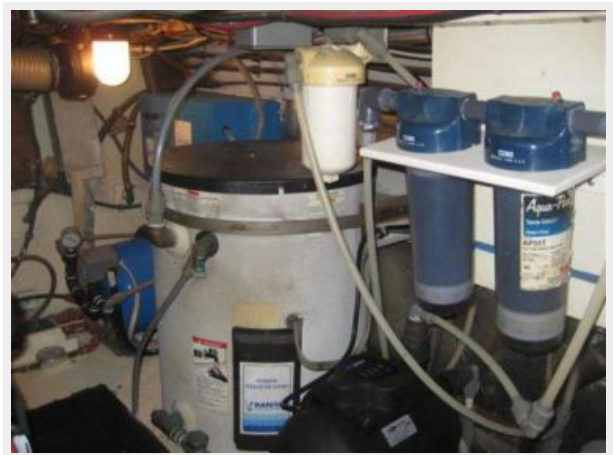
Disclaimer

The Company offers the details of this vessel or yacht in good faith but cannot guarantee or warrant the accuracy of this information nor warrant the condition of the vessel. A buyer should instruct his representatives, agents, or his surveyors, to investigate such details as the buyer desires validated. This vessel or yacht is offered subject to prior sale, price change, or withdrawal without notice.

PHOTOS











CONTACTS

Andrey Shestakov, leading yacht broker of the sales department of Shestakov Yacht Sales Inc. Shestakov Yacht Sales Inc., the official representative of the Miami/Fort Lauderdale FL headquarters.

Contact details

Email: andrey@shestakovyachtsales.com

Web: shestakovyachtsales.com/en/

Telephones

USA: +1(954)274-4435

Office hours

Monday – Saturday: **9:00 - 21:00** EDT

Sunday: **closed**

Address



Harbour Towne Marina, 850 NE 3rd St,
STE 213, Dania, FL 33004