

ISLAND TIME — BROWARD



Судостроитель: BROWARD

Год постройки: 1990

Модель: Моторная яхта

Цена: **ЦЕНА ЯХТЫ ПО ЗАПРОСУ**

Местонахождение: United States

Длина общая: 105' 0" (32.00m)

Ширина: 20' 0" (6.10m)

Макс. осадка: 5' 6" (1.68m)

Крейс. скорость: 13 Kts. (15 MPH)

Макс. скорость: 15 Kts. (17 MPH)

Купить **ISLAND TIME — BROWARD** а также выбрать подходящую вам яхту из нашего каталога яхт вам поможет опытный яхтенный брокер Андрей Шестаков. На сегодняшний день компания **Shestakov Yacht Sales Inc.** имеет большое количество яхт в собственном списке продаж, а также тесно сотрудничает со всеми крупными яхтенными производителями по всему миру.

Для того чтобы купить яхту **ISLAND TIME — BROWARD** а также проконсультироваться по любому вопросу связанному с покупкой, продажей, чартером яхт позвоните по телефону **+7(918)465-66-44**.

ОГЛАВЛЕНИЕ

ОГЛАВЛЕНИЕ	2
ХАРАКТЕРИСТИКИ	5
Обзор	5
Основная информация	5
Размеры	5
Скорость, вместимость и масса	5
Размещение	6
Корпус и палуба	6
Информация о двигателе	6
ПОДРОБНОЕ ОПИСАНИЕ	7
Accommodations	7
Galley	7
Electronics	8
Electrical	8
Flybridge Equipment	8
Main Deck Equipment	9
Safety Equipment	9
Aft Deck	9
Lazarette	10
Engine Room	10
Other	11
Exclusions	11
Исключения	11
Отказ от ответственности	11
ФОТОГРАФИИ	12
Aft Deck	12
Aft Deck	12
Aft Deck	12

Main Salon	12
Main Salon	12
Main Salon TV	12
Formal Dining	13
Formal Dining	13
Pilothouse	13
Pilothouse	13
Galley and Informal Dining	13
Galley and Informal Dining	13
Galley	14
Foredeck	14
Flybridge Stairway	14
Flybridge	14
Flybridge	14
Flybridge	14
Flybridge	15
Flybridge	15
Flybridge Jacuzzi, Tender and Toys Aft	15
Master Stateroom	15
Master Stateroom	15
Master Head	15
Master Head	16
Queen Guest Stateroom	16
Queen Guest Stateroom	16
Queen Guest Head	16
Twin Guest Plus Pullman Berth	16
Twin Guest Head	16
Crew Head	17
Crew Cabin with Washer/Dryer	17

Crew Cabin	17
Captain's Cabin	17
ISLAND TIME	17
Engine Room	17
КОНТАКТЫ	19
Контактная информация	19
Телефоны	19
Время работы	19
Адрес	19

ХАРАКТЕРИСТИКИ

Обзор

ISLAND TIME underwent an extensive refit in 2006 and was completed in late 2007. The entire yacht was retrofitted with state of the art equipment and electronics along with a complete new galley, custom interior, paint and mechanical upgrades.

Основная информация

Тип судна: Моторная яхта

Подкатегория: Raised Pilothouse

Модельный год: 1991

Год постройки: 1990

Год обновления: 2007

Страна: United States

Верх: 2370

Открытая палуба мостика: Да

Размеры

Длина общая: 105' 0" (32.00m)

Ширина: 20' 0" (6.10m)

Макс. осадка: 5' 6" (1.68m)

Скорость, вместимость и масса

Крейс. скорость: 13 Kts. (15 MPH)

Макс. скорость: 15 Kts. (17 MPH)

Вместимость воды: 2700 Gallons

Объем топливного бака: 10500 Gallons

Размещение

Всего кают: 3

Всего коек: 5

Спальные места: 7

Всего ком. состава: 4

Каюта капитана: Да

Каюты экипажа: 3

Койки экипажа: 4

Спальных мест экипажа: 5

Комм. состав экипажа: 1

Корпус и палуба

Материал корпуса: Aluminum

Материал палубы: Teak

Дизайнер экстерьера: Broward Marine

Информация о двигателе

Двигатели: 2

Производитель: Detroit Diesel

Модель: 12V92 Series

Тип двигателя: Inboard

Тип топлива: Diesel

ПОДРОБНОЕ ОПИСАНИЕ

Accommodations

ISLAND TIME accommodates seven guests in three staterooms plus crew quarters forward for five. The master stateroom features a king size bed, entertainment center with 42" Sony Bravia XBR HDMI flatscreen TV, refrigerator, digital safe, two cedar lined walk-in closets and Shoji screens. The his/her bath is equipped w/Jacuzzi tub and a private separate shower, onyx counter tops and marble inlays. Located aft is the VIP and guest staterooms, one with a queen bed and vanity and the other with twin beds and an additional pullman berth. Both are fully equipped with head and shower, cedar lined closet, Shoji screens and a Toshiba 32' flatscreen TV. In addition, there is a Frigidaire series washer/dryer, linen closet and additional storage located in the companionway. Aft of the crew quarters is the country kitchen style galley featuring black granite counter tops, spacious seating settee for eight with a teak lacquered table, stainless steel cabinets with glass inlays, stainless steel drawers and GE Monogram stainless steel appliances.

Continuing aft is a day head/powder room with a contemporary glass bowl sink, onyx counter and marble flooring. Up two steps to the raised pilothouse which was completely remodeled and re-engineered in 2006. Further aft is the contemporary dining salon which features port and starboard buffet cabinets with glass bull-nose counter top and formal dining table with seating for eight. The main salon adjoining the dining area features earth tones and a sophisticated transitional contemporary styling has a circular sofa and mahogany coffee table w/black granite inlay. Opposite the seating area is a complete entertainment area featuring a 50" Plasma Pioneer Elite TV. RIT central control system for all electronics. Duet shades in main salon. New headliner and carpet throughout October 2010. Crew quarters are forward with three cabins. The Captain's cabin features a raised queen bed, Sharp LC-20A2 flatscreen TV, cedar lined closet, Pioneer stereo/CD player, ships monitoring system, Panasonic XDP Intercom system. Fully equipped head and shower. The second cabin has twin bed with pullman, cedar lined closet, pioneer stereo/CD player, Shoji screens. Opposite is the third crew cabin with a twin bed, hanging locker, Maytag stacked washer/dryer, Shoji screens.

Galley

- Large stainless steel sink
- Jenn-air stainless steel 14cubic ft. fresh food capacity double door refrigerator model#JFC2089HES includes a 20cubic ft. freezer drawer
- 2 sliding drawer GE Monogram refrigerators in country style island
- GE Monogram stainless steel trash compactor
- GE Monogram stainless steel Jet Dry dishwasher
- Jenn-air stainless steel microwave oven JMV8208AAS
- Dacor stainless steel convection oven w/4 burner red laser stove
- 42 bottle stainless steel wine chiller
- Sharp Aquos flatscreen TV 32" on swivel

- Forward bulkhead of galley is a spacious pantry

Electronics

- Robertson AP9 MKII Autopilot (pilothouse)
- Hynautic power steering
- SR2030 Koopnautic fin stabilizers
- Furuno GP-36 GPS
- B&G 20/20 CD fathometer
- B&G 20/20 CD weather
- B&G Hydra 330 fathometer
- (3) VEI ships computer monitors, multi-select viewing
- Dual Sat. for US & Southern Caribbean
- (2) Furuno-Navnet VX2 system w/C-map, NT max, Nobeltec color fish finder/sounder
- (2) Furuno 72 Mi radar
- (2) Icom IC-M502 VHF Radio
- (1) Icom IC-M502 VHF radio (flybridge)
- Sea-222 single side band radio/telephone
- Simrad/Robertson RBC-50 Gyro
- KVH Trac phone
- ACR Search Light (ACRL 6000)
- Furuno 72 Mi radar w/daylight view nav-monitor
- Furuno GPS (new 1998)
- Robertson AP9 MKII autopilot
- Icom-M502 VHF with remote mic
- Hydra-power bow thruster control
- Fluxgate compass
- Magnetic compass
- Simrad 77 model Gyro compass for flybridge and pilothouse

Electrical

- Cummins 45 KW generator Set
- New 2009 Kubota Phazor 45 KW Generator
- 5,000 series Staco 30amp battery charger(Charles Marine)
- 5,000 series Staco 40amp battery charger(Charles Marine)
- Pro Mariner SS40 battery chargers
- (3)Hubbel 100 amp/200v shore power connectors
- Kapoc electrolysis monitor system

Flybridge Equipment

- Tender-Model 550 17' Nouvarania-w/115HP 1998 serviced-10/20/2010
- Waverunner- 2005 SeaDoo RXT1800
- Sun-Brite outdoor flatscreen TV
- Marquipt 2500lb easy lift Davit
- Quick release Marquipt chocks for tender & wave runners
- Six person custom Jacuzzi
- Customized radar arch
- Circular staircase from aft deck
- Wine chiller
- Mini fridge door for food
- Trash compactor
- Complete Beverage center
- Custom stainless steel grill
- Wrap around seating w/cushions & canvas covers
- Yellow/white sunbrella cushions throughout
- (3) Adjustable built-in sun lounges
- Custom bimini top (new 2013)
- Custom euro-windscreen
- Custom sliding hatch
- AM/FM & cassette player
- Fiber built umbrellas withstand 60MPH winds

Main Deck Equipment

- King size sunning pad on bow
- Storage lockers, port & starboard
- Marquipt boarding ladders
- Radar arch with custom lighting & styling
- Quartz lights
- Custom bow staff
- Spare props
- Ideal Windlass 250' of 3/8" chain

Safety Equipment

- (2) Avon 8-person liferafts
- (12) Adult life jackets
- (2) 36" Life rings
- (2) EPIRB 406 GPS feed

Aft Deck

- Lounges and chairs
- Teak deck
- Custom glass sliding door into salon
- Teak dining table with (10) teak chairs
- Wetbar w/sink & refrigerator
- Circular stairway w/teak steps to (FB)
- Speakers overhead
- Recessed overhead spotlights
- (2) Custom storage lockers
- Overhead outdoor lights
- Custom grab guard rails
- Removable guard rails
- (2) Quartz lights
- Custom transom lights
- Custom gates port & starboard w/double spiral staircase down to lazarette
- Mediterranean style swim platform

Lazarette

- Spacious, walk-in, air conditioned Lazarette
- Access to rudder port & steering
- 1700 gal. additional fresh water tank for boat wash downs when on anchor
- (2) GE upright freezers
- Freshwater hot/cold shower

Engine Room

- GM 12V-92 DDEC Engines (approx. 1200 hrs. since rebuild as of Oct. 2013)
- ZF Gears
- Marine Air 12 ton chilled water AC system
- Watermakers 2000 GPD Watermaker Inc. WMS019502MSRANY1
- HPS hydra power bow thruster 45hp
- Koopnautic stabilizers
- Glendinning engine synchronizers
- Each engine has Triple Racor fuel filters
- Speedair air compressor
- 12V Submersible electric/auto bilge pump w/high water alarm
- 110V Electric/manual bilge pumps
- Electric fuel transfer pump to manifold w/digital guage & auto timer
- Detroit diagnostic center w/indicator lights at each engine
- Waste oil tank & new clean oil tank, 60gal each
- Automatic oil change system for main engines

- Power steering pump w/reservoir & filter
- Multi-engine interface power selector switch
- Complete engine room monitoring system in engine room
- Twin Staco Automatic Voltage regulators-type AVR-24130 50/60 HZ
- Fill-Rite fuel system series 900
- Delta-T air system
- Dual mach 5 head hunter freshwater pumps
- Delta 360psi Halon system
- Engine room Elbex camera system automatic gyro

Other

- Underwater camera system for viewing sea life
- (4) Transom underwater lights
- All water tanks re-epoxy in 2006
- Microphor fresh water heads throughout
- (6) Elbex monitoring cameras
- (6) Individual satellite TV receivers

Exclusions

A full exclusion list will be provided pursuant to a purchase agreement.

Исключения

При продаже яхты исключаются личные вещи владельца.

Отказ от ответственности

Компания предоставляет описание судна или яхты добросовестно, но не может гарантировать точность этой информации, а также не ручается за техническое состояние. Покупатель должен проинструктировать своих агентов или оценщиков исследовать представленную информацию более подробно, по собственному желанию. Продажа судна или яхты, изменение цены или снятие с продажи будет происходить без предварительного уведомления.

ФОТОГРАФИИ

Aft Deck



Aft Deck



Aft Deck



Main Salon



Main Salon



Main Salon TV



Formal Dining



Formal Dining



Pilothouse



Pilothouse



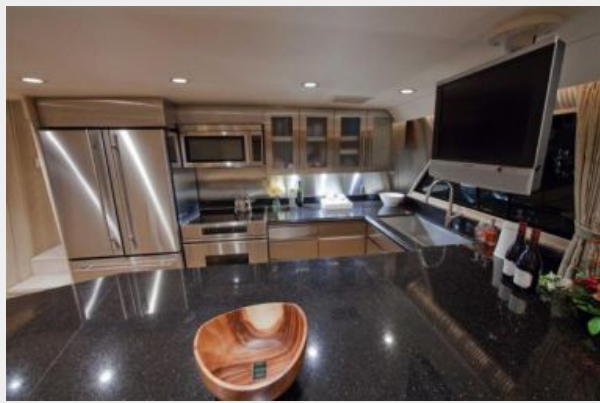
Galley and Informal Dining



Galley and Informal Dining



Galley



Foredeck



Flybridge Stairway



Flybridge



Flybridge



Flybridge



Flybridge



Flybridge



Flybridge Jacuzzi, Tender and Toys Aft



Master Stateroom



Master Stateroom



Master Head



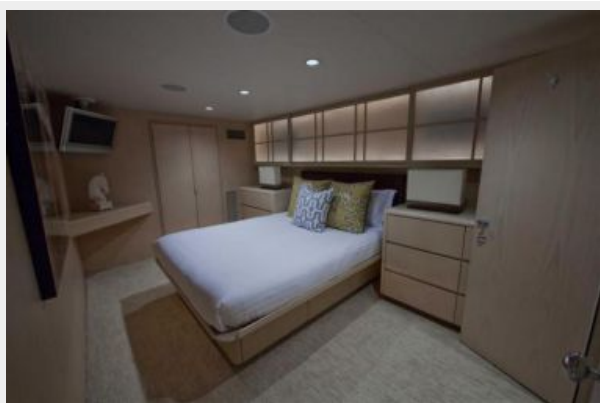
Master Head



Queen Guest Stateroom



Queen Guest Stateroom



Queen Guest Head



Twin Guest Plus Pullman Berth



Twin Guest Head



Crew Head



Crew Cabin with Washer/Dryer



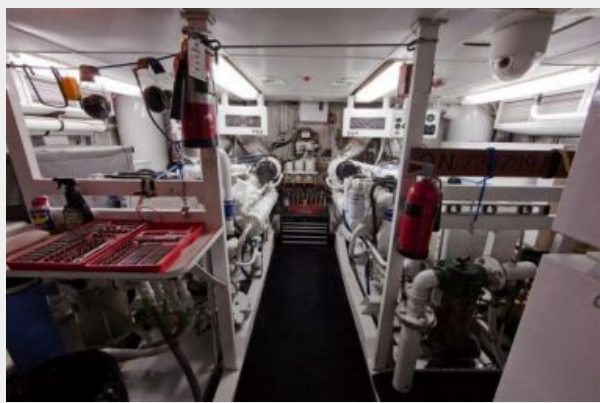
Crew Cabin



Captain's Cabin

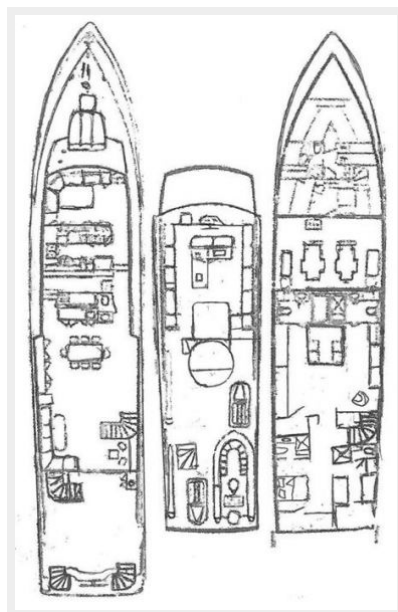


Engine Room



ISLAND TIME





КОНТАКТЫ

Андрей Шестаков (Andrey Shestakov) – ведущий яхтенный брокер отдела продаж яхт и судов компании Shestakov Yacht Sales Inc. Официальный представитель Shestakov Yacht Sales Inc. для русскоговорящих клиентов в центральном офисе компании в Майами/Форт Лодердейл/Флорида/США.

Контактная информация

Email: andrey@shestakovyachtsales.com

Web: shestakovyachtsales.com

Телефоны

Краснодарский край: **+7(918)465-66-44**

США, Майами, Флорида: **+1(954)274-4435**

Время работы

Понедельник – Суббота: **9:00 - 21:00**
EDT

Воскресенье: **Закрето**

Адрес



Harbour Towne Marina, 850 NE 3rd St,
STE 213, Dania, FL 33004