

PROFESSIONALLY MAINTAINED — CARVER



Builder: CARVER

LOA: 40' 0" (12.19m)

Year Built: 1997

Model: Motor Yacht

Price: PRICE ON APPLICATION

Location: United States

Our experienced yacht broker, Andrey Shestakov, will help you choose and buy a yacht that best suits your needs **Professionally maintained — CARVER** from our catalogue. Presently, at Shestakov Yacht Sales Inc., we have a wide variety of yachts available on our sale's list. We also work in close contact with all the big yacht manufacturers from all over the world.

If you would like to buy a yacht **Professionally maintained — CARVER** or would like help answering any questions concerning purchasing, selling or chartering a yacht, please call **+1(954)274-4435**

TABLE OF CONTENTS

TABLE OF CONTENTS	2
SPECIFICATIONS	5
Basic Information	5
Dimensions	5
Accommodations	5
Hull and Deck Information	5
Engine Information	5
DETAILED INFORMATION	6
Generator	6
Exclusions	6
Disclaimer	6
PHOTOS	7
Port Profile	7
Bow	7
Stern	7
Starboard Profile at anchor	7
Bow	7
Bow	7
Facing forward	8
Swim platform	8
Starboard stern	8
Interior salon facing toward starboard	8
Facing aft into salon	8
Facing forward	8
Facing forward toward port	9
Facing aft toward starboard	9
Electrical panel	9
Facing aft	9

Forward port head/shower	9
Starboard stern	9
Forward berth - Starboard TV	10
Forward berth facing forward	10
Forward helm seating	10
Starboard facing forward	10
Port settee	10
Facing forward	10
Helm	11
Helm seating - facing aft	11
Bow from helm	11
Master stateroom facing forward	11
Master stateroom head/shower	11
Aft seating - facing starboard	11
Aft seating - facing aft	12
Master stateroom facing port	12
Forward berth	12
Forward berth	12
Forward berth	12
Forward berth	12
Forward berth	13
Settee - port side	13
Settee - port side	13
Settee - port side - facing aft	13
Galley - starboard	13
Galley microwave	13
Galley - oven and stove	14
Galley - oven and stove	14
Galley	14

Facing forward	14
Facing aft	14
Facing aft	14
CONTACTS	29
Contact details	29
Telephones	29
Office hours	29
Address	29

SPECIFICATIONS

Basic Information

Category: Motor Yacht

Sub Category: Aft Cabin

Model Year: 1997

Year Built: 1997

Country: United States

Dimensions

LOA: 40' 0" (12.19m)

Accommodations

Total Cabins: 2

Hull and Deck Information

Hull Material: Fiberglass

Engine Information

Engines: 2

Manufacturer: Crusader

Model: 502 8.2L

Engine Type: Inboard

Fuel Type: Gas/Petrol

DETAILED INFORMATION

Generator

- 174 hours

Exclusions

Owner's personal belongings.

Disclaimer

The Company offers the details of this vessel or yacht in good faith but cannot guarantee or warrant the accuracy of this information nor warrant the condition of the vessel. A buyer should instruct his representatives, agents, or his surveyors, to investigate such details as the buyer desires validated. This vessel or yacht is offered subject to prior sale, price change, or withdrawal without notice.

PHOTOS

Port Profile



Bow



Stern



Starboard Profile at anchor



Bow



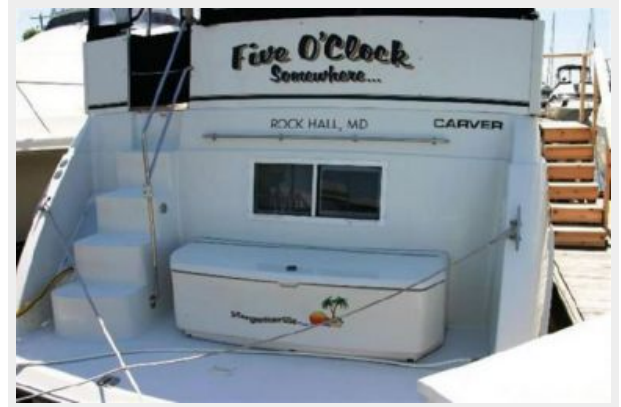
Bow



Facing forward



Swim platform



Starboard stern



Interior salon facing toward starboard



Facing aft into salon



Facing forward



Facing forward toward port



Facing aft toward starboard



Electrical panel



Facing aft



Forward port head/shower



Starboard stern



Forward berth - Starboard TV



Forward berth facing forward



Forward helm seating



Starboard facing forward



Facing forward



Port settee



Helm



Helm seating - facing aft



Bow from helm



Master stateroom facing forward



Aft seating - facing starboard



Master stateroom head/shower



Aft seating - facing aft



Master stateroom facing port



Forward berth



Forward berth



Forward berth



Forward berth



Forward berth



Settee - port side



Settee - port side



Settee - port side - facing aft



Galley - starboard



Galley microwave



Galley - oven and stove



Galley - oven and stove



Galley



Facing forward

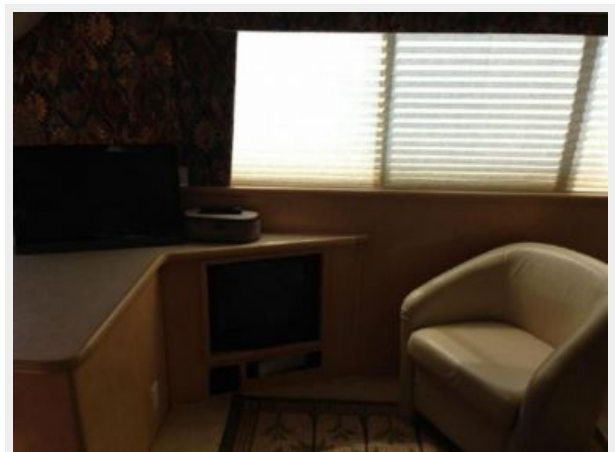


Facing aft

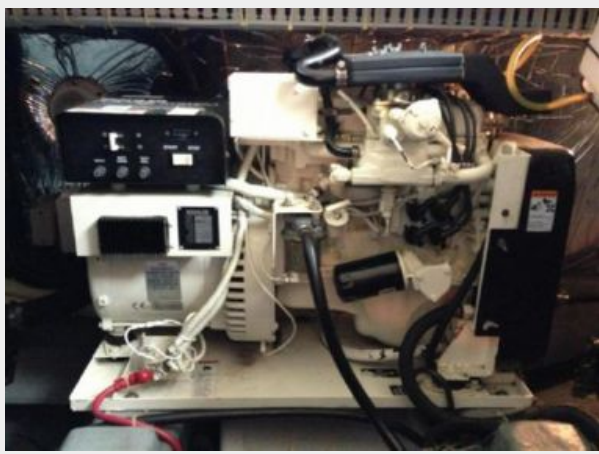
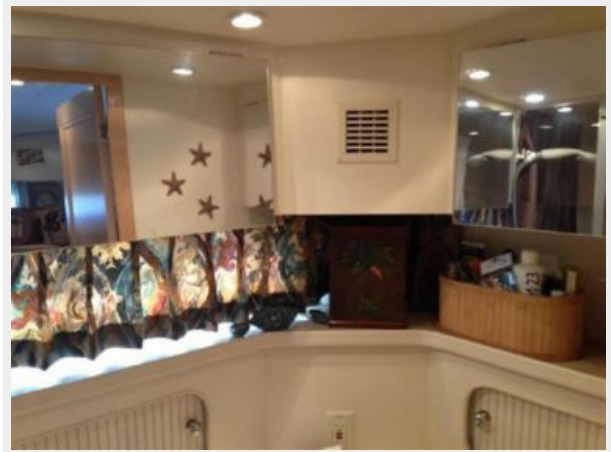


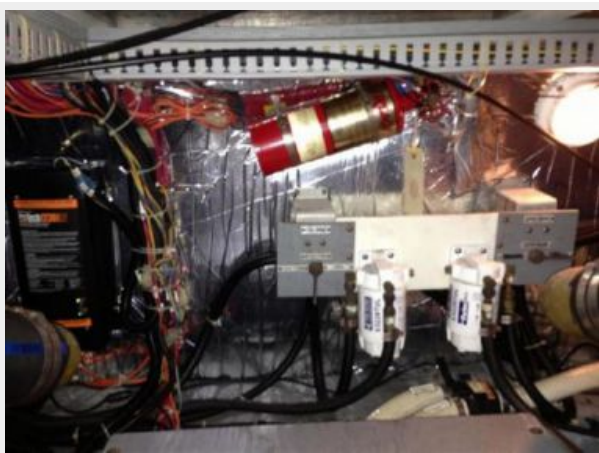
Facing aft





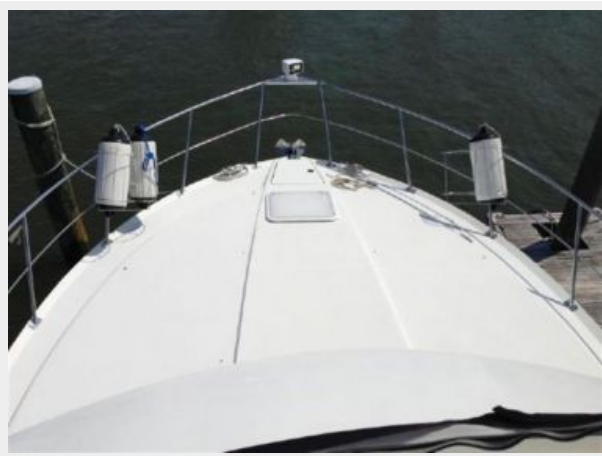








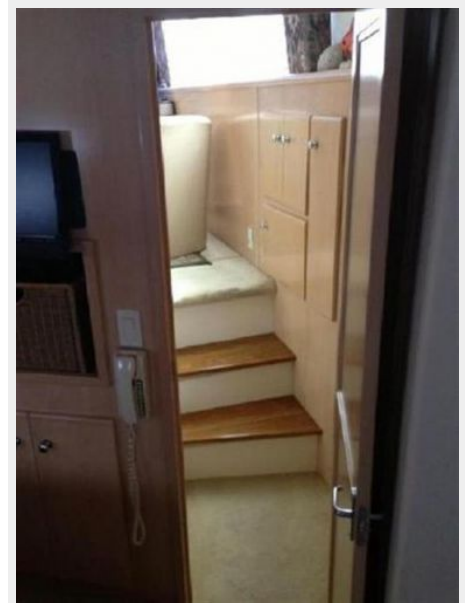
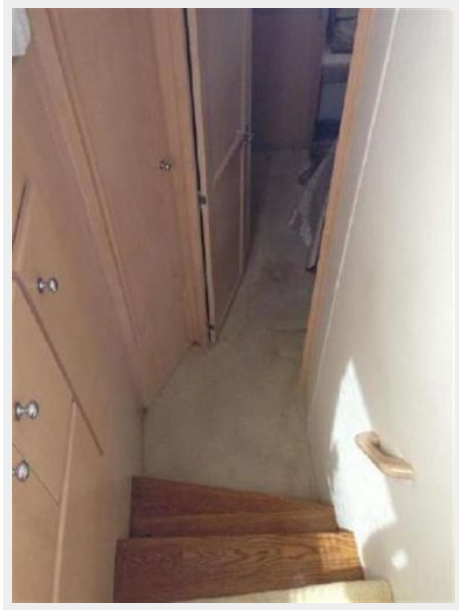


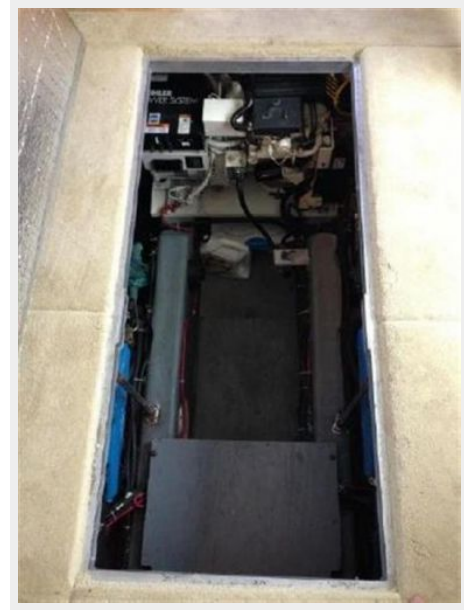
















CONTACTS

Andrey Shestakov, leading yacht broker of the sales department of Shestakov Yacht Sales Inc. Shestakov Yacht Sales Inc., the official representative of the Miami/Fort Lauderdale FL headquarters.

Contact details

Email: andrey@shestakovyachtsales.com

Web: shestakovyachtsales.com/en/

Telephones

USA: +1(954)274-4435

Office hours

Monday – Saturday: **9:00 - 21:00** EDT

Sunday: **closed**

Address



Harbour Towne Marina, 850 NE 3rd St,
STE 213, Dania, FL 33004