

OUR UFF DA — MAINSHIP



Судостроитель: MAINSHIP

Год постройки: 2001

Модель: Траулер

Цена: **ЦЕНА ЯХТЫ ПО ЗАПРОСУ**

Местонахождение: United States

Длина общая: 43' 0" (13.11m)

Ширина: 15' 8" (4.78m)

Мин. осадка: 3' 9" (1.14m)

Макс. осадка: 3' 9" (1.14m)

Крейс. скорость: 10 Kts. (12 MPH)

Макс. скорость: 16 Kts. (18 MPH)

Купить **Our Uff da — MAINSHIP** а также выбрать подходящую вам яхту из нашего каталога яхт вам поможет опытный яхтенный брокер Андрей Шестаков. На сегодняшний день компания **Shestakov Yacht Sales Inc.** имеет большое количество яхт в собственном списке продаж, а также тесно сотрудничает со всеми крупными яхтенными производителями по всему миру.

Для того чтобы купить яхту **Our Uff da — MAINSHIP** а также проконсультироваться по любому вопросу связанному с покупкой, продажей, чартером яхт позвоните по телефону **+7(918)465-66-44**.

ОГЛАВЛЕНИЕ

ОГЛАВЛЕНИЕ	2
ХАРАКТЕРИСТИКИ	6
Обзор	6
Основная информация	6
Размеры	6
Скорость, вместимость и масса	6
Размещение	7
Корпус и палуба	7
Информация о двигателе	7
ПОДРОБНОЕ ОПИСАНИЕ	8
43' Mainship Overview	8
43' Mainship Vessel Walkthrough	8
43' Mainship Accommodations	8
43' Mainship Salon	8
43' Mainship Galley	8
43' Mainship Dining	9
43' Mainship Master Stateroom	9
43' Mainship Forward Guest Stateroom	9
43' Mainship Port Guest Stateroom	9
43' Mainship Flybridge	9
43' Mainship Sundeck	10
43' Mainship Cockpit	10
43' Mainship Audio/Visual Equipment	10
43' Mainship Electronics	10
43' Mainship Electrical System	10
43' Mainship Engine/Mechanical Equipment	11
43' Mainship Deck Equipment	11
43' Mainship Tender	12

43' Mainship Safety & Fire Protection	12
43' Mainship Exclusions	12
Исключения	12
Отказ от ответственности	12
ФОТОГРАФИИ	13
43' Mainship port aft profile	13
43' Mainship starboard aft profile	13
43' Mainship aft profile	13
43' Mainship anchor windlass	13
43' Mainship foredeck	14
43' Mainship foredeck aft	14
43' Mainship port side deck photo1	14
43' Mainship port side deck photo2	14
43' Mainship starboard side deck photo1	15
43' Mainship starboard side deck photo2	15
43' Mainship flybridge forward	15
43' Mainship flybridge aft	15
43' Mainship flybridge port	15
43' Mainship flybridge starboard	15
43' Mainship flybridge helm	16
43' Mainship flybridge helmseat	16
43' Mainship flybridge port seating	16
43' Mainship flybridge starboard seating	16
43' Mainship cockpit port	16
43' Mainship sundeck	16
43' Mainship cockpit starboard	17
43' Mainship lazarette access	17
43' Mainship swimplatform	17
43' Mainship tender	17

43' Mainship tender outboard	18
43' Mainship salon forward	18
43' Mainship salon aft	18
43' Mainship salon port	18
43' Mainship salon starboard	18
43' Mainship galley photo1	18
43' Mainship galley photo2	19
43' Mainship freezer	19
43' Mainship lower helm	19
43' Mainship lower helm seat	19
43' Mainship master stateroom	19
43' Mainship master stateroom starboard	19
43' Mainship master stateroom forward	20
43' Mainship master stateroom aft	20
43' Mainship master stateroom head	20
43' Mainship master stateroom shower	20
43' Mainship forward guest stateroom	20
43' Mainship forward guest stateroom port	20
43' Mainship forward guest stateroom starboard	21
43' Mainship port guest stateroom	21
43' Mainship guest head	21
43' Mainship guest shower	21
43' Mainship engine room	22
43' Mainship port main engine	22
43' Mainship port Racor fuel filter	22
43' Mainship starboard main engine	22
43' Mainship water heater	23
43' Mainship oil change system	23
43' Mainship watermaker	23

43' Mainship electrical panel	23
43' Mainship generator	23
43' Mainship battery charger	23
КОНТАКТЫ	24
Контактная информация	24
Телефоны	24
Время работы	24
Адрес	24

ХАРАКТЕРИСТИКИ

Обзор

Our Uff da is a 3 stateroom 2 head Mainship 430 Trawler with 330 hp Cummins main engines. She is unique in that her sundeck has an aluminum framed canvas top and seating, which makes this area very comfortable. The sellers also reconfigured the salon to accommodate two stressless lounge chairs on the starboard side. She is well-maintained and very fairly priced. Price reduced!

Основная информация

Тип судна: Траулер	Подкатегория: Aft Cabin
Модельный год: 2001	Год постройки: 2001
Страна: United States	Верх: 2353
Открытая палуба мостика: Да	Кубрик: Да

Размеры

Длина общая: 43' 0" (13.11m)	Длина по ватерлинии: 0' 0" (0.00m)
Длина палубы: 0' 0" (0.00m)	Ширина: 15' 8" (4.78m)
Мин. осадка: 3' 9" (1.14m)	Макс. осадка: 3' 9" (1.14m)
Трапы: 0' 0" (0.00m)	Длина привального бруса: 43' 0" (13.11m)

Скорость, вместимость и масса

Крейс. скорость: 10 Kts. (12 MPH)	Макс. скорость: 16 Kts. (18 MPH)
Вместимость воды: 250 Gallons	Вместимость сточного бака: 80 Gallons
Объем топливного бака: 500 Gallons	

Размещение

Всего кают: 3

Всего коек: 5

Спальные места: 6

Всего ком. состава: 2

Корпус и палуба

Материал корпуса: Fiberglass

Материал палубы: Fiberglass Sandwich

Комплектация корпуса: Modified V-Hull

Цвет корпуса: White

Отделка корпуса: Aluminum

Информация о двигателе

Двигатели: 2

Производитель: Cummins

Модель: 6BTA 5.9-M

Тип двигателя: Inboard

Тип топлива: Diesel

ПОДРОБНОЕ ОПИСАНИЕ

43' Mainship Overview

Our Uff da is a 3 stateroom 2 head Mainship 430 Trawler with 330 hp Cummins main engines. She is unique in that her sundeck has an aluminum framed canvas top and seating, which makes this area very comfortable. The sellers also reconfigured the salon to accommodate two stressless lounge chairs on the starboard side. She is well-maintained and very fairly priced. Price reduced!

43' Mainship Vessel Walkthrough

Entering the boat from the swimplatform, you walk through the transom door into the cockpit and then walk onto either side deck or step down into the master stateroom through the private access door. From either side deck, you can step up onto the sundeck and then step up to the flybridge or walk further forward and walk into the salon. From port, you walk into the galley forward and find a U-shaped settee port aft, a desk starboard aft, two stressless lounge chairs to starboard and the lower helm starboard forward. Forward there is a bow guest stateroom and one to port and the guest head is to starboard. The master stateroom is aft and is accessed from the salon or cockpit. The engine room is accessed through a salon sole hatch or forward through a lift-up door.

43' Mainship Accommodations

Our Uff da offers a full beam master stateroom aft with an ensuite head, a guest stateroom forward with a v-berth, a guest stateroom to port with side by side berths and a guest head to starboard.

43' Mainship Salon

The salon offers a built-in U-shaped settee and hi/lo folding table to port, a desk starboard aft and two stressless lounge chairs to starboard. There is a door to the sundeck aft and side deck access doors on each side forward. The sole is teak & holly. The large side windows keep this area very light and airy and the center windshield opens for extra fresh air.

43' Mainship Galley

The galley is located port forward in the salon.

- Princess Ceran 3-burner electric cooktop

- Goldstar EZ convection/microwave oven
- Black & Decker Spacemaker coffee maker
- Sub Zero under counter refrigerator
- Raritan Icer-Ette icemaker
- Freezer under the helm seat
- Double stainless steel sink
- Magma stainless steel BBQ grill on the sundeck

43' Mainship Dining

Dining space is available at the salon settee and table and the flybridge port seating and table.

43' Mainship Master Stateroom

The aft master stateroom offers a queen size berth, hanging locker, storage drawers and cabinets, an aft entrance from the cockpit, a Hitachi flat screen TV and an ensuite head with enclosed shower.

43' Mainship Forward Guest Stateroom

The forward guest stateroom offers a v-berth, 3 portlights, overhead hatch with screen, carpet, 2 hanging lockers, shelves and storage drawers. The guest head is to starboard aft of this stateroom.

43' Mainship Port Guest Stateroom

The port guest stateroom offers side by side berths, hanging locker, overhead hatch, portlight and carpet. The guest head is to starboard.

43' Mainship Flybridge

The flybridge offers a bimini top, helm benchseat, built-in L-shaped seating (with storage underneath) and table to port, built-in seating to starboard with storage underneath and non-skid deck.

43' Mainship Sundeck

The sundeck offers an aluminum framed canvas top with built-in seating, non-skid deck, molded-in steps to each side deck, molded-in steps to the flybridge and sliding door to the salon.

43' Mainship Cockpit

The cockpit offers a transom door to the swimplatform, same level access to each side deck, lazarette access and non-skid deck.

43' Mainship Audio/Visual Equipment

- Dynex flat screen TV in the salon
- Hitachi flat screen TV in the master stateroom
- JVC RX-7000V A/V receiver
- JVC XL-FZ158 5-disc changer

43' Mainship Electronics

- Rule Aqua Meter magnetic compass at the lower helm and on the flybridge
- Icom IC-M604 VHF
- Raytheon RN300 GPS
- Raytheon ST60 Tridata system
- Raymarine Pathfinder Plus RL70 Radar
- Raytheon ST6000 + autopilot
- Garmin GPS 740S chart plotter

43' Mainship Electrical System

- Kohler 8kW generator with 995 hours
- Sentry 60 amp battery charger

- Marince 50 amp shore cord

43' Mainship Engine/Mechanical Equipment

- Twin Cummins 6BTA 5.9-M 330hp main engines
- ZF HSW800 gearboxes
- Dripless shaft seals
- Racor fuel filters
- Oil X-Changer oil change system
- Seastar hydraulic steering system
- Groco sea strainers
- VDO gauges
- Glendinning synchronizer
- Bennett trim tabs
- Cruisair reverse cycle air conditioning/heating system
- Seaward 20 gallon stainless steel water heater
- Sanigard holding tank vent filter system
- Jabsco heads
- Zinc Saver II corrosion control system

43' Mainship Deck Equipment

- Simpson-Lawrence Horizon Express anchor windlass with foot controls
- Lewmar 20kg claw anchor
- Aluminum rails and stainless steel deck hardware
- Non-skid decks
- Swimplatform deck storage box

- Dock water connection aft
- Fresh water hot/cold shower in cockpit
- Spreader lights

43' Mainship Tender

- Avon 11' RIB
- Nissan Marine 9.8hp outboard
- Trick brand swimplatform davit system

43' Mainship Safety & Fire Protection

- Sea Fire engine shutdown override system
- Sea Fire Halon 1301 engine room fire suppression system
- Safe-T-Alert carbon monoxide monitors in the salon and staterooms

43' Mainship Exclusions

- Sellers' personal belongings
- Artwork

Исключения

При продаже яхты исключаются личные вещи владельца.

Отказ от ответственности

Компания предоставляет описание судна или яхты добросовестно, но не может гарантировать точность этой информации, а также не ручается за техническое состояние. Покупатель должен проинструктировать своих агентов или оценщиков исследовать представленную информацию более подробно, по собственному желанию. Продажа судна или яхты, изменение цены или снятие с продажи будет происходить без предварительного уведомления.

ФОТОГРАФИИ

43' Mainship port aft profile



43' Mainship starboard aft profile



43' Mainship aft profile



43' Mainship anchor windlass



43' Mainship foredeck



43' Mainship foredeck aft



43' Mainship port side deck photo1



43' Mainship port side deck photo2



43' Mainship starboard side deck photo1



43' Mainship starboard side deck photo2



43' Mainship flybridge forward



43' Mainship flybridge aft



43' Mainship flybridge port



43' Mainship flybridge starboard



43' Mainship flybridge helm



43' Mainship flybridge helmseat



43' Mainship flybridge port seating



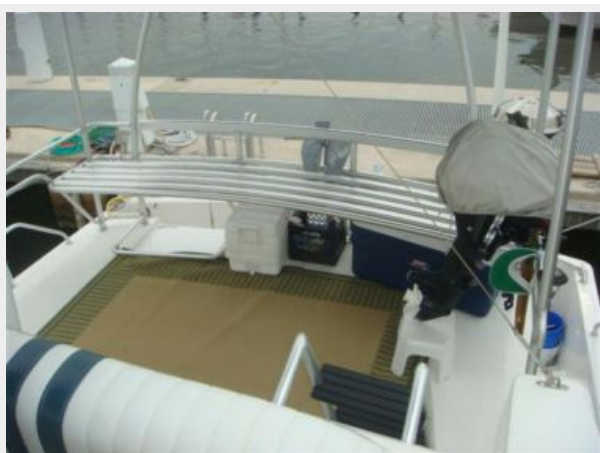
43' Mainship flybridge starboard seating



43' Mainship cockpit port



43' Mainship sundeck



43' Mainship cockpit starboard



43' Mainship lazarette access



43' Mainship swimplatform



43' Mainship tender



43' Mainship tender outboard



43' Mainship salon forward



43' Mainship salon aft



43' Mainship salon port



43' Mainship salon starboard



43' Mainship galley photo1



43' Mainship galley photo2



43' Mainship freezer



43' Mainship lower helm



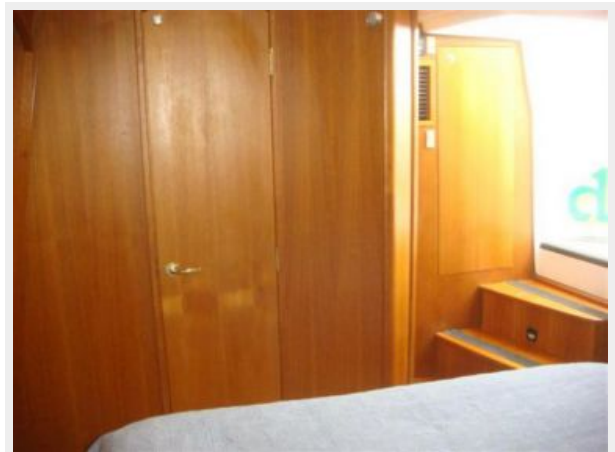
43' Mainship lower helm seat



43' Mainship master stateroom



43' Mainship master stateroom starboard



43' Mainship master stateroom forward



43' Mainship master stateroom aft



43' Mainship master stateroom head



43' Mainship master stateroom shower



43' Mainship forward guest stateroom



43' Mainship forward guest stateroom port



43' Mainship forward guest stateroom starboard



43' Mainship port guest stateroom



43' Mainship guest head



43' Mainship guest shower



43' Mainship engine room



43' Mainship port main engine



43' Mainship port Racor fuel filter



43' Mainship starboard main engine



43' Mainship oil change system



43' Mainship water heater



43' Mainship watermaker



43' Mainship electrical panel



43' Mainship generator



43' Mainship battery charger



КОНТАКТЫ

Андрей Шестаков (Andrey Shestakov) – ведущий яхтенный брокер отдела продаж яхт и судов компании Shestakov Yacht Sales Inc. Официальный представитель Shestakov Yacht Sales Inc. для русскоговорящих клиентов в центральном офисе компании в Майами/Форт Лодердейл/Флорида/США.

Контактная информация

Email: andrey@shestakovyachtsales.com

Web: shestakovyachtsales.com

Телефоны

Краснодарский край: **+7(918)465-66-44**

США, Майами, Флорида: **+1(954)274-4435**

Время работы

Понедельник – Суббота: **9:00 - 21:00**
EDT

Воскресенье: **Закрыто**

Адрес



Harbour Towne Marina, 850 NE 3rd St,
STE 213, Dania, FL 33004