

TOO MUCH — HUNTER



Builder: HUNTER

Year Built: 2008

Model: Sloop

Price: PRICE ON APPLICATION

Location: United States

LOA: 49' 0" (14.94m)

Beam: 14' 9" (4.50m)

Max Draft: 5' 6" (1.68m)

Our experienced yacht broker, Andrey Shestakov, will help you choose and buy a yacht that best suits your needs **Too Much — HUNTER** from our catalogue. Presently, at Shestakov Yacht Sales Inc., we have a wide variety of yachts available on our sale's list. We also work in close contact with all the big yacht manufacturers from all over the world.

If you would like to buy a yacht **Too Much — HUNTER** or would like help answering any questions concerning purchasing, selling or chartering a yacht, please call **+1(954)274-4435**

TABLE OF CONTENTS

TABLE OF CONTENTS	2
SPECIFICATIONS	4
Basic Information	4
Dimensions	4
Speed, Capacities and Weight	4
Accommodations	4
Hull and Deck Information	4
Engine Information	5
DETAILED INFORMATION	6
Sail Area	6
Keel Details	6
Broker's Comments	6
Accommodations	6
Deck and Hull	7
Sails and Rigging	7
Safety	8
Exclusions	8
Disclaimer	8
PHOTOS	9
Profile 3	9
Profile 2	9
Main Salon from Galley	9
Galley	9
Galley Detail 1	9
Galley Detail 2	9
Main Salon looking aft	10
Main Salon Port Side seating	10
Main Salon Table made-up as sleeping double	10

Nav Station	10
Master Cabin Forward	10
Master Cabin Facing Aft	10
Master Head/Shower	11
Master Cabin looking aft	11
Master Cabin Head & Shower Detail	11
Guest Cabin Starboard	11
Guest Cabin Port	12
Guest Cabin Head/Shower	12
Stern Profile	12
Cockpit 1	12
Cockpit 2	12
Layout drawings	12
CONTACTS	13
Contact details	13
Telephones	13
Office hours	13
Address	13

SPECIFICATIONS

Basic Information

Category: Sloop

Sub Category: Cruising Sailboat

Model Year: 2008

Year Built: 2008

Country: United States

Dimensions

LOA: 49' 0" (14.94m)

LWL: 43' 10" (13.36m)

Beam: 14' 9" (4.50m)

Max Draft: 5' 6" (1.68m)

Clearance: 63' 0" (19.20m)

MFG Length: 49' 11" (15.21m)

Speed, Capacities and Weight

Water Capacity: 200 Gallons

Holding Tank: 52 Gallons

Fuel Capacity: 150 Gallons

Accommodations

Total Cabins: 3

Total Berths: 6

Total Heads: 2

Hull and Deck Information

Hull Material: Fiberglass

Engine Information

Engines: 1

Manufacturer: Yanmar

Fuel Type: Diesel

DETAILED INFORMATION

Sail Area

I : 54.58 ft J : 16.50 ft P : 50.58 ft E : 21.83 ft Working Sail Area : 1277.00 sq ft

Keel Details

Keel #1 Keel Type: Fin Ballast: 11216 lb Max Draft: 7.00 ft

Broker's Comments

The Hunter 49 is a luxurious passagemaker for coastal and extended offshore cruising. Interior appointments, accommodations, and entertainment features are outstanding. With an overall length of 49' 11", a beam of 14' 5", and 6' 9" of salon headroom, the Hunter 49 is a BIG boat with impressive interior volume. The sea-kindly, efficient, hull design is powered by a specially engineered sail plan that achieves maximum efficiency while maintaining the Hunter trademark of single-handed sailability - unusual for a boat of this size. Components aboard the Hunter 49 include Hunter's famous mainsheet traveler arch, backstayless B&R rig, in-mast furling mainsail, and single overlapping jib. A dual-ended mainsheet allows adjustments from both the cockpit and companionway, and all sheets and halyards end in the cockpit. This is a boat for the cruising sailor who wants to arrive at his/her destination, efficiently, comfortably, and in style!

Accommodations

- Three cabin, two head layout
- Stall shower
- 3-zone Air conditioning and heat
- Memory foam mattresses
- Leather interior cushions
- Bose 'Lifestyle' Stereo system
- Flat screen TV in salon
- Complete Hunter Mariner package
- TV Antenna package
- Oceanair shades
- Corian countertops
- Dual compartment top-opening freezer
- Front opening SS refrigerator
- Fresh water system
- Microwave

- Range hood w/light & fan
- 3-burner LPG stove w/oven
- 200 gallon fresh water tanks
- 11 gallon water heater
- Opening hatch

Deck and Hull

- Epoxy barrier coat
- Dodger
- Bimini
- Double anchor roller - offset
- Anchor windlass, electric
- SS bow pulpit
- Cockpit arch, SS w/mainsheet traveler
- SS deck handrails
- 2 x Dorade vents
- Dockside fresh water hook-up
- Structural Grid re-inforcement built in to hull
- Double SS lifelines, stanchions w/ 3 gates
- 8 x SS mooring cleats
- Non-skid deck
- 2 x fixed ports, 10 x opening ports w/ screens
- Full wrap rub rail w/ SS insert
- Rudder - balanced spade w/SS shaft
- Swim platform w/SS telescoping ladder
- Sail Locker, forward w/watertight bulkhead
- Windshield fixed ports w/covers

Sails and Rigging

- Selden rig with in-mast furling
- Double-ended mainsheet purchase system
- 95% self-tacking jib w/suncover
- Internal halyards led aft to the cockpit
- Mainsheet traveller mounted on arch
- Spinnaker halyard
- Rigid boom vang
- 2 Rigging winches, 2-speed self-tailing #44 (1 electric)
- 1 Winch, Port helm, 2-speed self-tailing #54 (electric)
- 2 Primary winches, 2-speed self-tailing #54
- Windex wind indicator

Safety

- Air Horn and Fog Bell
- Anchors and Rodes
- CO and Smoke Detectors
- Emergency tiller
- Fire extinguishers, handheld and system
- GFI receptacles
- Hand-held flares and Life-jackets
- High bilge water alarm and pump
- NMMA Certification on all systems
- Hunter Owner's Manual

Exclusions

Owner's personal belongings.

Disclaimer

The Company offers the details of this vessel or yacht in good faith but cannot guarantee or warrant the accuracy of this information nor warrant the condition of the vessel. A buyer should instruct his representatives, agents, or his surveyors, to investigate such details as the buyer desires validated. This vessel or yacht is offered subject to prior sale, price change, or withdrawal without notice.

PHOTOS

Profile 2



Profile 3



Main Salon from Galley



Galley



Galley Detail 1



Galley Detail 2



Main Salon looking aft



Main Salon Port Side seating



Nav Station



Main Salon Table made-up as sleeping double



Master Cabin Forward



Master Cabin Facing Aft



Master Cabin looking aft



Master Head/Shower



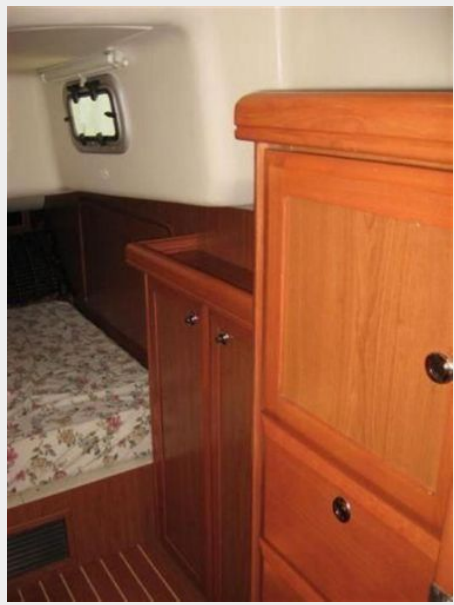
Master Cabin Head & Shower Detail



Guest Cabin Starboard



Guest Cabin Port



Guest Cabin Head/Shower



Stern Profile



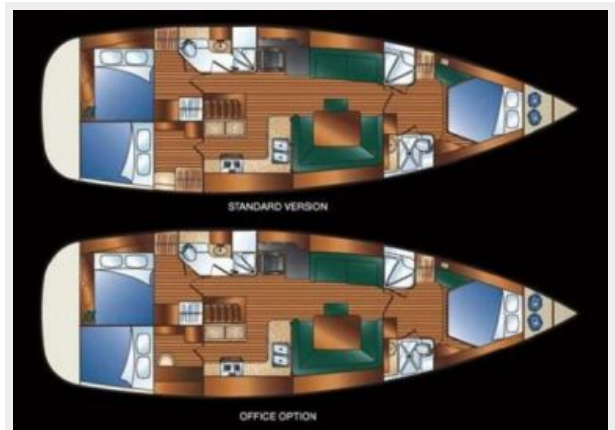
Cockpit 1



Cockpit 2



Layout drawings



CONTACTS

Andrey Shestakov, leading yacht broker of the sales department of Shestakov Yacht Sales Inc. Shestakov Yacht Sales Inc., the official representative of the Miami/Fort Lauderdale FL headquarters.

Contact details

Email: andrey@shestakovyachtsales.com

Web: shestakovyachtsales.com/en/

Telephones

USA: +1(954)274-4435

Office hours

Monday – Saturday: **9:00 - 21:00** EDT

Sunday: **closed**

Address



Harbour Towne Marina, 850 NE 3rd St,
STE 213, Dania, FL 33004