

PURRFECT — FOUNTAINE PAJOT



Builder: FOUNTAINE PAJOT

Year Built: 2001

Model: Catamaran

Price: PRICE ON APPLICATION

Location: Belize

LOA: 46' 0" (14.02m)

Beam: 24' 1" (7.34m)

Min Draft: 4' 3" (1.30m)

Our experienced yacht broker, Andrey Shestakov, will help you choose and buy a yacht that best suits your needs **Purrfect — FOUNTAINE PAJOT** from our catalogue. Presently, at Shestakov Yacht Sales Inc., we have a wide variety of yachts available on our sale's list. We also work in close contact with all the big yacht manufacturers from all over the world.

If you would like to buy a yacht **Purrfect — FOUNTAINE PAJOT** or would like help answering any questions concerning purchasing, selling or chartering a yacht, please call **+1(954)274-4435**

TABLE OF CONTENTS

TABLE OF CONTENTS	2
SPECIFICATIONS	4
Basic Information	4
Dimensions	4
Speed, Capacities and Weight	4
Accommodations	4
Hull and Deck Information	4
Engine Information	4
DETAILED INFORMATION	5
Accommodations	5
Sails and Rigging	5
Manufacturer Provided Description	5
Engines	6
Galley	6
Additional Information	6
Exclusions	7
Disclaimer	7
PHOTOS	8
Double Berth	8
Salon	8
Aft	8
Galley	8
Single Berth	9
Steering/Electronics	9
Double Berth	9
Head	9
Double Berth	10
Double Berth	10

Dinette	10
Berth	10
Forward	10
TV	10
Single Berth	11
Galley	11
Head	11
Bed	11
Stove	12
Swim Step	12
Head	12
Layout	12
CONTACTS	13
Contact details	13
Telephones	13
Office hours	13
Address	13

SPECIFICATIONS

Basic Information

Category: Catamaran

Model Year: 2001

Year Built: 2001

Country: Belize

Dimensions

LOA: 46' 0" (14.02m)

Beam: 24' 1" (7.34m)

Min Draft: 4' 3" (1.30m)

Speed, Capacities and Weight

Water Capacity: 227 Gallons

Holding Tank: 60 Gallons

Fuel Capacity: 104 Gallons

Accommodations

Total Cabins: 5

Total Berths: 4

Total Heads: 4

Hull and Deck Information

Hull Material: Fiberglass

Engine Information

Manufacturer: Yanmar

DETAILED INFORMATION

Accommodations

This air conditioned Bahia 46' has 4 double cabins, allowing you to sleep up to 8 people. Each cabin has its own private head and shower. There are also 2 additional private single v berths forward, and 2 single sleeping areas located in the passageways allowing you extra sleeping room for crew or children.

This increases the sleeping capacity to the maximum of 12 people.

Sails and Rigging

SAILS:

Roller furling genoa, fully battened mainsail with lazy jack and stack pack. Sails new in March/2011, new stack pack May/2010.

WINCHES:

- 2 LEWMAR 54, 2 speed, self tailing genoa winches, both electric.
- 2 LEWMAR 48, 2 speed, self tailing sheet winches
- 2 LEWMAR 44, 2 speed, self tailing halyard winches
- 1 LEWMAR 44, 2 speed, self tailing mainsail reefing winch, broke several years ago and not replaced as halyard winches could function as reefing winches.
- 1 LEWMAR 40, 2 speed, self tailing traveler/dinghy hoist winch.

Manufacturer Provided Description

The Bahia 46 is the result of collaboration between Bay Yacht Charters and the builder. She is available in many configurations, with up to four double cabins and four heads. In the owner's version, the entire starboard wing is a private suite. The owner's bed is the "island" type accessible from two sides. The forward cabin is customizable as a lounge - office or walk-in dressing room - closet. The galley-up design facilitates keeping in touch, so no one is buried in a hole. It lets the cook be in one of the lightest, airiest parts of the boat. The galley can be split so the upper portion is more of a bar - serving area with dishwasher, ice maker and the like, while the main food preparation galley is located down. Additional storage, pantry and utility spaces can be designed in below to accommodate liveaboards who require fewer cabins and more storage. The bridgedeck navigation station has room for elaborate offshore instruments around the chart table. The Bahia 46, like every Fountaine Pajot, is built to the highest ISO 9002

European standard for offshore yachts, incorporating vacuum-bagging construction and careful hand lay-up with sophisticated high strength resins which results in an extremely high strength to weight ratio while maintaining tremendous abuse strength. Her keels are fixed and filled with foam, protecting the rudders and shafts. Should they strike a reef or submerged object they harmlessly break away without allowing water intrusion. Fountaine Pajot catamarans use nets forward and eliminate weight in the forward hulls to prevent pitching and aid bow recovery in heavy seas. Flat deck spaces, and especially the relatively flat coach roof, make it comfortable and easy to move around and handle sails. A unique, patented feature is the eyebrow overhang of the coach roof over the window areas. This prevents the high sun from creating a greenhouse effect inside the boat.

Engines

- 1- **Engines :** Yanmar 4JH4AE x 2, 54HP, 2007, unknown hours, SD40 saildrives.
- 2- **Generator:** Northern Lights 9Kw, M773L W3, 08/2012, 337 hours.

Galley

COOKING STOVE: Eno 3 burner cooktop w/ separate Eno oven

TYPE FUEL:propane

REFRIGERATOR: SeaFrost 2 plate engine compressor driven, top loading located in galley,

SINK: double bowl stainless steel sinks. Saltwater and Freshwater faucets.

Microwave.

Additional Information

Bimini

Anchoring – Lofrans Tigres 1200W, 65lb Delta primary, Fortress secondary, new chain 05/2011
3/8" G40 200'

Cabin fans

5 Air conditioning units

Xantrex Inverter/charger (12/2012)

Microwave

Raymarine A70 Plotter Raymarine Autopilot, wind and depth

Magma Barbeque

10ft RIB with 15hp outboard

CD Player and AM/FM Radio

DVD Player

19" LCD TV

Exclusions

Owner's personal belongings.

Disclaimer

The Company offers the details of this vessel or yacht in good faith but cannot guarantee or warrant the accuracy of this information nor warrant the condition of the vessel. A buyer should instruct his representatives, agents, or his surveyors, to investigate such details as the buyer desires validated. This vessel or yacht is offered subject to prior sale, price change, or withdrawal without notice.

PHOTOS

Salon



Double Berth



Galley



Aft



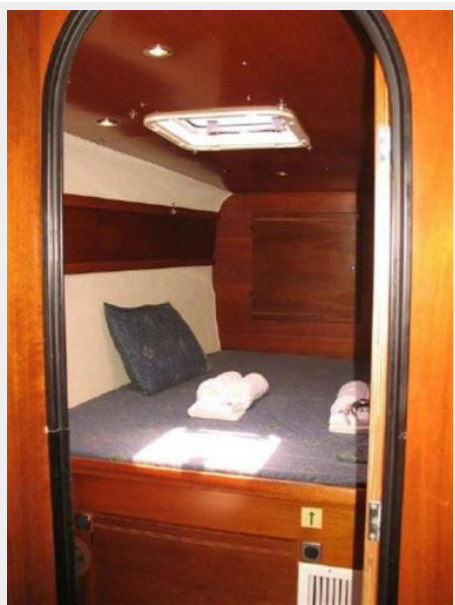
Steering/Electronics



Single Berth



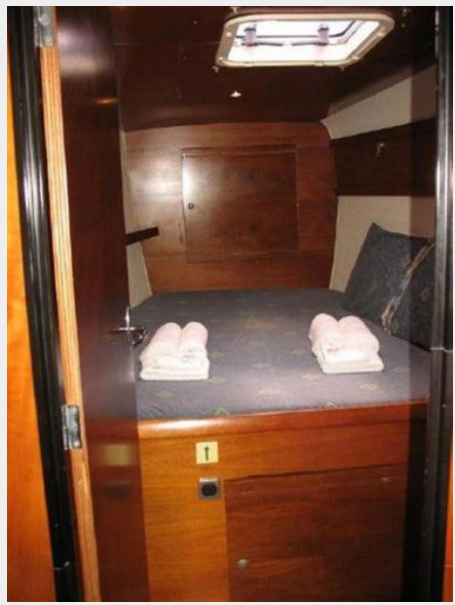
Double Berth



Head



Double Berth



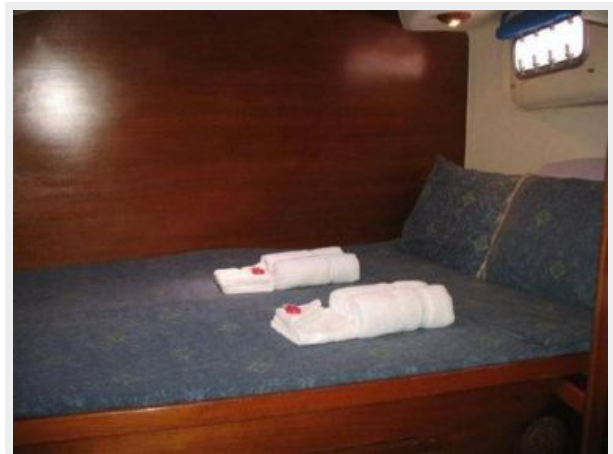
Double Berth



Dinette



Berth



Forward



TV



Single Berth



Galley



Head



Bed



Stove



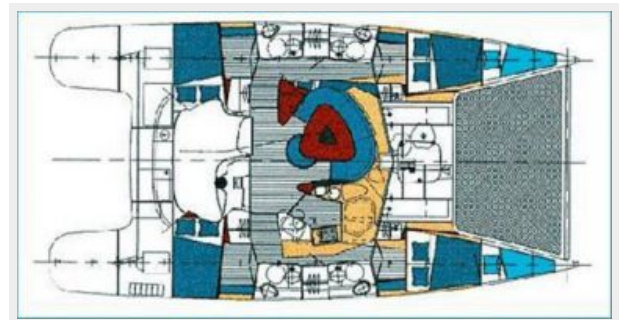
Swim Step



Head



Layout



CONTACTS

Andrey Shestakov, leading yacht broker of the sales department of Shestakov Yacht Sales Inc. Shestakov Yacht Sales Inc., the official representative of the Miami/Fort Lauderdale FL headquarters.

Contact details

Email: **andrey@shestakovyachtsales.com**

Web: shestakovyachtsales.com/en/

Telephones

USA: **+1(954)274-4435**

Office hours

Monday – Saturday: **9:00 - 21:00 EDT**

Sunday: **closed**

Address



Harbour Towne Marina, 850 NE 3rd St,
STE 213, Dania, FL 33004