

MILA — BERING YACHTS



Builder: BERING YACHTS

Year Built: 2010

Model: Trawler

Price: PRICE ON APPLICATION

Location: United States

LOA: 55' 0" (16.76m)

Beam: 18' 0" (5.49m)

Min Draft: 5' 9" (1.75m)

Max Draft: 6' 0" (1.83m)

Cruise Speed: 8 Kts. (9 MPH)

Max Speed: 10 Kts. (12 MPH)

Our experienced yacht broker, Andrey Shestakov, will help you choose and buy a yacht that best suits your needs **Mila — BERING YACHTS** from our catalogue. Presently, at Shestakov Yacht Sales Inc., we have a wide variety of yachts available on our sale's list. We also work in close contact with all the big yacht manufacturers from all over the world.

If you would like to buy a yacht **Mila — BERING YACHTS** or would like help answering any questions concerning purchasing, selling or chartering a yacht, please call **+1(954)274-4435**

TABLE OF CONTENTS

TABLE OF CONTENTS	2
SPECIFICATIONS	7
Basic Information	7
Dimensions	7
Speed, Capacities and Weight	7
Accommodations	7
Hull and Deck Information	8
Engine Information	8
DETAILED INFORMATION	9
Walkthrough	9
Accommodations	9
Salon	10
Galley	10
Pilothouse	11
Electronics	11
Fly Bridge	12
Master Stateroom	12
Master Head	13
Guest Stateroom	13
Guest Head	13
Office/Study	13
General Construction	14
Engine Room	14
Mechanical	15
Electrical System	16
Decks	16
Additional Equipment	17
Miscellaneous	17

Exclusions	17
Disclaimer	17
PHOTOS	19
55' Bering Yachts Cruiser Salon	19
55' Bering Yachts Cruiser Salon	19
55' Bering Yachts Cruiser Salon	19
55' Bering Yachts Cruiser Salon	19
55' Bering Yachts Cruiser Salon	19
55' Bering Yachts Cruiser Salon	19
55' Bering Yachts Cruiser Salon	20
55' Bering Yachts Cruiser Salon	20
55' Bering Yachts Cruiser Galley	20
55' Bering Yachts Cruiser Galley	20
55' Bering Yachts Cruiser Galley	20
55' Bering Yachts Cruiser Galley	20
55' Bering Yachts Cruiser Galley	21
55' Bering Yachts Cruiser Refrigerator	21
55' Bering Yachts Cruiser Refrigerator	21
55' Bering Yachts Cruiser Coffee Maker	21
55' Bering Yachts Cruiser Pilothouse	21
55' Bering Yachts Cruiser Pilothouse	21
55' Bering Yachts Cruiser Pilothouse	22
55' Bering Yachts Cruiser Pilothouse	22
55' Bering Yachts Cruiser Pilothouse	22
55' Bering Yachts Cruiser Alarm Panel	22
55' Bering Yachts Cruiser Electronics	22
55' Bering Yachts Cruiser Electronics	22
55' Bering Yachts Cruiser Electronics	23
55' Bering Yachts Cruiser Electronics	23

55' Bering Yachts Cruiser Electronics	23
55' Bering Yachts Cruiser Electronics	23
55' Bering Yachts Cruiser Electronics	23
55' Bering Yachts Cruiser Electronics	23
55' Bering Yachts Cruiser Electric Panel	24
55' Bering Yachts Cruiser Electric Panel	24
55' Bering Yachts Cruiser Exit Stairs	24
55' Bering Yachts Cruiser Pilothouse Fan	24
55' Bering Yachts Cruiser Electronics	24
55' Bering Yachts Cruiser Passport	24
55' Bering Yachts Cruiser VIP	25
55' Bering Yachts Cruiser VIP	25
55' Bering Yachts Cruiser Master	25
55' Bering Yachts Cruiser Master	25
55' Bering Yachts Cruiser Master	25
55' Bering Yachts Cruiser Master	25
55' Bering Yachts Cruiser VIP Head	26
55' Bering Yachts Cruiser VIP Head	26
55' Bering Yachts Cruiser Master Head	26
55' Bering Yachts Cruiser Hallway	26
55' Bering Yachts Cruiser Stateroom	26
55' Bering Yachts Cruiser Stateroom	26
55' Bering Yachts Cruiser Engine Room Entry	27
55' Bering Yachts Cruiser Engine Room Entry	27
55' Bering Yachts Cruiser Engine Room Entry	27
55' Bering Yachts Cruiser Engine Room	27
55' Bering Yachts Cruiser Engine Room	27
55' Bering Yachts Cruiser Engine Room	27
55' Bering Yachts Cruiser Engine Room	28

55' Bering Yachts Cruiser Engine Room	28
55' Bering Yachts Cruiser Engine Room	28
55' Bering Yachts Cruiser Engine Room	28
55' Bering Yachts Cruiser Engine Room	28
55' Bering Yachts Cruiser Engine Room	28
55' Bering Yachts Cruiser Engine Room	29
55' Bering Yachts Cruiser Engine Room	29
55' Bering Yachts Cruiser Engine Room	29
55' Bering Yachts Cruiser Engine Room	29
55' Bering Yachts Cruiser Profile	29
55' Bering Yachts Cruiser Haulout	29
55' Bering Yachts Cruiser Profile	30
55' Bering Yachts Cruiser Profile	30
55' Bering Yachts Cruiser Profile	30
55' Bering Yachts Cruiser Profile	30
55' Bering Yachts Cruiser Profile	30
55' Bering Yachts Cruiser Profile	30
55' Bering Yachts Cruiser Profile	30
55' Bering Yachts Cruiser Profile	31
55' Bering Yachts Cruiser Profile	31
55' Bering Yachts Cruiser Profile	31
55' Bering Yachts Cruiser Profile	31
55' Bering Yachts Cruiser Profile	31
55' Bering Yachts Cruiser Profile	31
55' Bering Yachts Cruiser Profile	31
55' Bering Yachts Cruiser Profile	32
55' Bering Yachts Cruiser Haulout	32
55' Bering Yachts Cruiser Layout	32
CONTACTS	33
Contact details	33
Telephones	33

Office hours	33
Address	33

SPECIFICATIONS

Basic Information

Category: Trawler

Sub Category: Long Range Cruiser

Model Year: 2010

Year Built: 2010

Country: United States

Fly Bridge: Yes

Dimensions

LOA: 55' 0" (16.76m)

LWL: 50' 0" (15.24m)

LOD: 51' 0" (15.54m)

Beam: 18' 0" (5.49m)

Min Draft: 5' 9" (1.75m)

Max Draft: 6' 0" (1.83m)

Clearance: 25' 0" (7.62m)

MFG Length: 55' 0" (16.76m)

Speed, Capacities and Weight

Cruise Speed: 8 Kts. (9 MPH)

Cruise Speed Range: 3000

Max Speed: 10 Kts. (12 MPH)

Displacement: 132300 Pounds

Water Capacity: 530 Gallons

Holding Tank: 260 Gallons

Fuel Capacity: 2300 Gallons

Accommodations

Total Cabins: 3

Total Berths: 2

Sleeps: 4

Total Heads: 2

Hull and Deck Information

Hull Material: Steel

Deck Material: Steel

Hull Configuration: Displacement w/
Bulbous Bow

Hull Color: Blue

Hull Finish: Steel

Engine Information

Engines: 1

Manufacturer: Cummins

Model: QSL9

Engine Type: Inboard

Fuel Type: Diesel

DETAILED INFORMATION

Walkthrough

The vessel has 23 1/2" wide full walk-around decks, covered by the overhang of the fly bridge, a Portuguese bridge with access door to foredeck, and substantial ground tackle. There are port and starboard access doors to the pilothouse as well as the saloon from the 7' wide aft deck through watertight dogging doors. There are port and starboard boarding gates just aft of the pilothouse doors. There is a mid-ship transom gate to the 3' wide swim platform with 40" high removable stainless steel railings. The aft deck has a bench seat with bi-fold table, grill and storage to port aft and sink and storage to starboard, and there is a gradual 9 step stairway to the fly bridge with 9" high treads. The yacht has 36" high bulwarks, (and an additional 8" stainless steel mounted teak cap rail), with numerous freeing ports to facilitate walking safely around the vessel in rough conditions.

All windows are commercial grade bolt-in fixed windows with 15mm tempered glass. There are 8 12" port lights with tempered glass.

From the aft deck going forward to the saloon through a watertight dogging door, one enters the saloon with an L shaped settee to starboard with dining table and entertainment center on the forward starboard bulkhead. There are two baseball stitched leather and fabric chairs to port with table between, and at each end.

Going forward one goes up 4 stairs to galley and raised pilothouse or down 5 stairs to staterooms and office/Study. Master forward with centerline berth and en suite head aft to starboard. Aft is large double stateroom with bath accessed from hallway. Office/ Study is aft to port and engine room is accessed from this compartment through five dog watertight door.

Going up from the saloon is the galley which features all stainless steel Fischer & Paykel appliances. Forward of the galley is the Pilothouse with Lebroc helm chair and bench seating, (which doubles as pilot berth), and table. There are port and starboard dutch style, (opening halves; top and bottom) watertight dogging doors exiting the pilothouse to the walk around decks and Portuguese bridge.

Aft to port in the pilothouse is the stairway to the fly bridge, which features full instrumentation at the helm, ample seating and dining table, and trundled lowering arch to support electronics arrays. The fly bridge deck is expansive and has the boat deck aft with Steelhead Marine 1500 lb. Davit, cradles for the Venus 390 RIB tender with Suzuki 40 hp four stroke outboard. The high quality of the workmanship is evident on the stainless steel handrails surrounding the fly bridge.

Accommodations

There are three cabins in "Mila"; master stateroom forward with center island berth, beautifully

detailed joinery on all cabinetry, sliding sdogi screens on the portlights as well as emergency egress forward through a deck hatch to the foredeck. The master bath is aft to starboard and features marble and granite surfaces and glass shower doors.

The VIP Guest is aft to starboard and has a very large double berth, ample storage and portlights. The guest bath is across the hall and features the same granite and marble as the master.

In addition to the master stateroom and VIP stateroom, there is an office/study with a convertible sofa that doubles as a sleeping cabin for guest or crew.. Engine room access is through a watertight door from the office cabin.

Salon

The yacht is entered from the covered aft deck through a dogging style watertight door into the saloon. There are two baseball stitched leather and fabric chairs to port with a table between and small end table on either side. The interior cabinetry is teak and the saloon has bound edge carpet over beautiful light colored bamboo flooring. There is an L shaped black leather upholstered settee to starboard with dining table. Entertainment center is on the forward bulkhead.

- Hi/Lo dining/coffee table
- Bar with beverage center
- Built-in 42" LCD TV
- Entertainment center
- Generous storage
- Bamboo flooring throughout
- Courtesy lighting in furniture kicks
- Valence for indirect light and air conditioning ducting
- Upholstered ceiling panels
- Windows 15mm thick tempered glass
- Staircase to galley & pilothouse
- Staircase to lower deck

Galley

The galley is aft on the pilothouse level and features black granite countertops, large circular portlight to starboard, and bound edge carpet over bamboo flooring.

- Fisher&Pykel 4 burner ceramic electric cooktop
- GE microwave/convection oven w/ fan
- Two side-by-side Fisher&Pykel refrigerator/freezer/icemaker
- Fischer&Paykel Dishwasher
- Broan trash compactor

- GE garbage disposal
- Washer-Dryer combo, Miele
- Wine cooler

Pilothouse

The pilothouse features excellent visibility with five canted windows forward with washers and wipers, four large fixed side windows, and dutch style watertight doors to port and starboard. There are five Dell flatscreen displays for monitoring all aspects of the Navigation situation as well as all aspects of onboard mechanical and electrical operation. There is a watch berth/ settee aft to starboard on a raised dias with bi-fold table.

- Cummins 7" LCD display
- Glendinning main engine control
- Cummins auxiliary engine controls and gauges
- Generator control display with start/stop function
- Electrical panel 230 AC
- Electrical panel 24 VDC and 12 VDC
- Twin windlass controls
- Bow and stern thrusters controls
- Three Victron charger indicators/controls
- Victron inverters indicator
- Two Victron battery monitors
- Horn
- Wiper controls
- Lebroc premium helm chair
- Raised settee with table
- (2) chart tables
- Chart reading light, chart drawers
- Window defrost fans
- Search light with remote control
- Port and starboard Dutch doors

Electronics

- NavNet 3D Furuno MBDBB unit with two 20" Dell monitors
- Furuno MU-15 repiter for MFDBB on the fly bridge
- NavNet 3D Furuno MBD-8 unit with one 20" Dell monitor repeater
- Two 6 KW Furuno radars
- Furuno SC30 satellite compass
- Two Furuno GPS sensors

- Furuno 1 KW depth/fish finder
- Two Simrad AP-26 autopilots
- Two VHF radios Icom
- Simrad AIS150 unit
- Flir night vision camera with remote control
- KVH TracVision M3 satellite TV antenna worldwide with receiver
- KVH TracPhone v3
- Maretron ship monitoring system with 7" monitor connected to PC, equipped with weather station, eight tank sensors, high bilge water sensors, temperature sensors, GPS sensor, electronic compass

Fly Bridge

The fly bridge helm is offset to port of centerline with a large L shaped seating area and dining table to starboard. The access to pilothouse is on the port side down a teak and stainless steel stairway through a Diamond Seaglaze dogging door. There are numerous storage cabinets as well as a lifejacket locker. The fly bridge also features substantial teak decking.

- Cummins 7" LCD display
- Bow and stern thrusters controls
- Main engine controls
- Steering station
- Horn button
- Magnetic compass
- Helm chair
- Refreshment/entertainment center
- Settee with deck mounted table
- Hinged mast for electronics, radar, search light, horn and navigation lighting
- Audio system speakers and volume control

Master Stateroom

The master stateroom is forward on the lower level and has emergency access to the foredeck. There are hanging lockers to port and starboard and large opening portlights with sliding sogg screens. There are love seats at the foot of the bed on either side. The flooring is light bamboo with bound edge carpet overlay.

- Walk-around Queen size bed
- Solid wood bed base, upholstered face & storage drawers
- (2) Night tables, wood tops, drawers
- (2) Bureaus with drawers
- Hanging lockers
- 32" LCD TV/DVD/Satellite

- Decorative sconces and reading lights at bed
- Valance above bed with lighting
- Indirect lighting w/light dimmers
- Courtesy lighting at furniture kicks

Master Head

- Granite counter top, under mount sink
- Raritan Atlantic Freedom Marine electric toilet, full size
- Natural marble shower, seat and 1/2" thick frameless glass door
- Light valance above mirror
- Upper vanity with mirror
- Courtesy lighting at vanity kicks
- Granite floor

Guest Stateroom

A large berth offset to starboard with sliding Soji screens over an opening circular port light. There is a hanging locker forward. Bamboo flooring with bound edge carpet over. There are reading lights over the berth.

- Queen size bed
- Teak head board with mirror above nightstand
- Wood bed base w/upholstered panels, storage drawers
- Night tables w/ drawers & wood top
- Hanging locker, cedar lined
- Courtesy lighting at furniture kicks

Guest Head

- Marine electric toilet, full size
- Granite counter top w/under mount sink
- Tile shower w/seat, 1/2" thick frameless glass door
- Upper vanity with mirror and light valance
- Courtesy lighting at vanity kicks
- Tile floor

Office/Study

This cabin may be utilized as a second guest stateroom or crew quarters.

- Convertible couch
- Desk
- Reading light
- TV/DVD 22"
- Entrance to the engine room

General Construction

The hull and superstructure are fabricated from Mild steel, Lloyds A36, 3/8" plating on the bottom and 1/4 " plating on the hull sides with structural steel ballast in keel and hull, with steel pigs to trim vessel. There are four watertight bulkheads, two entrances to the engine room through watertight doors, and emergency exits from the stateroom areas. Hard chined steel hull with integral tanks, passive bilge keels which allow the vessel to sit upright when beached. Fully protected running gear. There are 14 windows on the main deck level, all commercially rated, bolt-in style with 15mm tempered glass. Pilothouse windows have washers and wipers. There are 8 12" round port lights with tempered glass.

- Collision bulkhead with water tight bilges and bulkheads throughout the boat
- Service void between tank tops and lower deck floors
- Fully protected props and foil shaped rudders, able to sit on its own bottom at keel and bilge keels
- SS bulwark caps, SS solid rod lining at all scuppers and hawse holes and 4" SS pipe rub rail
- Steel deckhouse/superstructure
- All accommodations thermally insulated
- (2) water tight doors engine room

Engine Room

"Mila" features a full stand-up, walk-in engine room which can be accessed from either the office/study or from the aft lazarette through dogging style watertight doors. The engine room features diamond plate flooring throughout and high quality thermal and acoustic insulation. There is a stainless steel sink and work station on the forward bulkhead with built-in tool drawers.

Main engine is centerline and the get home engine is to starboard and generator to port. There is quick and convenient access to all fuel and oil filters, sea water strainers and pumps, fresh water pumps, fuel polishing system, water maker membrane, and other critical systems. There are sight gauges on all fuel tanks, new and used oil tanks, and water tanks as backup to the electronic level sensors. There is a camera mounted on the forward bulkhead which provides an excellent view of the machinery space from the pilothouse.

Mechanical

- Cummins QSL-9 continuous duty 285hp engine, 750 hrs.
- Cummins M3.3 auxiliary engine , continuous duty, 65 HP, 50 hrs
- ZF W325 gear box rated at 500 HP
- Soft engine mounts
- Engine room and pilot house engine gauges
- Oil change pump for engine, auxiliary engine & generator
- 3 1/4" Dia. Aquamet 19 shaft with dripless shaft seals
- (5) blade Nibral prop 40"
- ZF gear box
- Soft engine mounts
- 2" Dia. Aquamet 19 shaft with dripless shaft seals
- Gori 23" three blade folding prop
- Side Power 11.4 KW bow and stern thrusters
- Fireboy extinguisher system in the engine room
- Fans with fire dampers
- (2) water tight access doors
- Polished stainless steel hand rails
- Seawater cooling
- (2) Sea chests
- Wet main engine DeAngelo exhausts for clean and quiet operation
- 260 gal grey water tank, shore pump out/overboard discharge capability
- 260 gal black water, shore pump out/overboard discharge capability
- Reverse cycle air conditioning/heating provided throughout the accommodations by six (6) Cruisair air conditioning units: 12000 BTU in the engine room ,10000 BTU for each stateroom, 16000 BTU for the pilothouse, 1x16000 BTU for the saloon area. All units have soft start logic and digital controls throughout the boat.
- Fueling station on main deck w/surge tank, sight gauges and spill retention system
- Fuel filtration and polishing system to 2 microns
- Fuel transfer system with two pre-plumbed pumps (redundant)
- Dual Racor filter/water separators at main engine with manifold and vacuum gauge
- Racor filter/water separators for generator
- Racor filter/water separators for auxiliary engine
- Fuel tanks (5) all integral to hull, three bunkers and two day tanks
- New and used 50 gals oil tanks
- Reverse oil change system
- AquaMatic 900 gals/day water maker
- Liquid level, as well as site gauges, on day fuel tanks
- (9) 24V DC bilge pumps, (1) per bilge compartment. Each pump has in-line check valves, a float switch and auto/off/manual selection switch.
- Water pressure system: (1) epoxy coated tank 475 gals, two supply pump, (1) six gallon pressure tank, piping, valves, fittings, pressure gauge and pressure control
- Switching pressure: on at 45 psi

- Dockside water connection with pressure reducing valve
- AC electric w/ heat exchanger 20 gallons boiler with accumulator tank for domestic hot water
- Domestic hot water circulation pump for instant hot water

Electrical System

Shore power is brought to the vessel on a 240 volt, 50 amp cord through a Glendenning cable master to an isolation transformer, and from there to the main distribution panel.

- 27 kW Onan generator in sound shield with heat exchanger cooling, wet exhaust and exhaust separator, 900 hrs.
- Generator gauges: engine room & pilothouse
- AC/DC distribution panel in pilot house
- AC, DC and data wiring in separate cable trays
- Isolator
- (3) Victron 5 KW inverters
- (3) Victron 100 A chargers for the house bank
- (1) Victron 50 A charger for thrusters battery banks
- (1) Victron 30 A charger for 12 VDC electronics battery bank
- 80 amp engine driven alternator
- 50 amp shore power hook-up, with Glendinning power cable handler
- 50 amp shore power hook-up
- Victron 240/220 volt 50/60 Hz battery charger for US/European/Asian power compatibility
- (20) AGM battery house bank, 2000 amp hr @ 24 volts
- (4) 4D AGM main engine and generator starting batteries, 24 volts
- (2) 4D AGM auxiliary engine starting batteries, 24 volts
- (2) 4D AGM windlass and bow thruster batteries, 24 volts
- All domestic 220 VAC outlets supplied by inverters, generator, shore power
- Navigation lights, 24 volts
- Ground fault interrupted circuits, as required
- Alarms for engines, gear boxes, generators, main exhaust cooling water and bilges

Decks

- Electric anchor windlass, vertical, w/chain stoppers and claws
- Stainless steel channels with roller for 110 lb.
- (2) Plow type SS anchor 110lbs, 400 ft. of 1/2" chain
- Hatch to self draining stainless steel anchor locker that includes light fixture
- (6) double horn SS bulwark bollards
- (2) forward lower deck emergency escape hatches
- Hatch to self-draining anchor locker
- Storage lockers with doors in Portuguese wall
- Deck fills for fresh water and waste removal

- Stainless steel ladder from aft deck to boat deck
- Steelheadmarine Euro 1500 hydraulic davit with telescopic boom 12'
- 13' RIB with 40HP Suzuki outboard
- Stainless steel hand rails on all bulwarks, upper and lower decks
- Bulwark transom gate
- LP SS gas grill at the cockpit
- Fuel station with surge tank
- Stainless steel rail on swim deck
- Tender mooring cleats

Additional Equipment

- Hot and cold fresh water shower on swim deck
- (3) outlet high pressure fresh water wash down system
- LED, halogen and florescent lighting
- Automatic lighting in hanging lockers
- Red rope and red courtesy night vision lighting in accommodations and at interior stairs
- Exterior courtesy deck lighting
- Self switching reading lights throughout accommodations
- Deck flood lights
- Dual trumpet air horns
- Smoke and heat alarms

Miscellaneous

- Fenders & fender lines
- Flare kit, whistles, Ship's bell, & Distress Flag
- Mooring lines
- Spare parts kit
- Fresh water hose
- Portable air horn

Exclusions

Owner's personal belongings.

Disclaimer

The Company offers the details of this vessel or yacht in good faith but cannot guarantee or warrant the accuracy of this information nor warrant the condition of the vessel. A buyer should instruct his representatives, agents, or his surveyors, to investigate such details as the buyer

desires validated. This vessel or yacht is offered subject to prior sale, price change, or withdrawal without notice.

PHOTOS

55' Bering Yachts Cruiser Salon



55' Bering Yachts Cruiser Salon



55' Bering Yachts Cruiser Salon



55' Bering Yachts Cruiser Salon



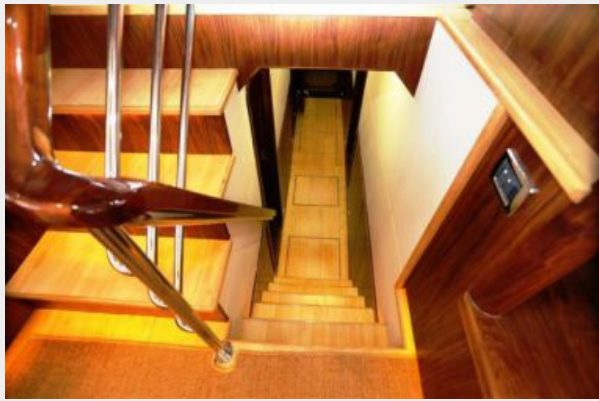
55' Bering Yachts Cruiser Salon



55' Bering Yachts Cruiser Salon



55' Bering Yachts Cruiser Salon



55' Bering Yachts Cruiser Salon



55' Bering Yachts Cruiser Galley



55' Bering Yachts Cruiser Galley



55' Bering Yachts Cruiser Galley



55' Bering Yachts Cruiser Galley



55' Bering Yachts Cruiser Galley



55' Bering Yachts Cruiser Refrigerator



55' Bering Yachts Cruiser Refrigerator



55' Bering Yachts Cruiser Coffee Maker



55' Bering Yachts Cruiser Pilothouse



55' Bering Yachts Cruiser Pilothouse



55' Bering Yachts Cruiser Pilothouse



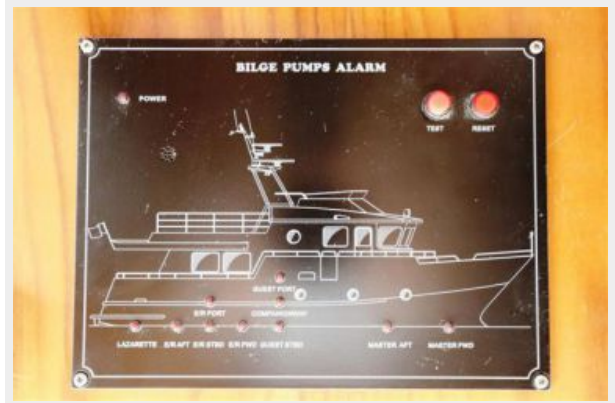
55' Bering Yachts Cruiser Pilothouse



55' Bering Yachts Cruiser Pilothouse



55' Bering Yachts Cruiser Alarm Panel



55' Bering Yachts Cruiser Electronics



55' Bering Yachts Cruiser Electronics



55' Bering Yachts Cruiser Electronics



55' Bering Yachts Cruiser Electronics



55' Bering Yachts Cruiser Electronics



55' Bering Yachts Cruiser Electronics



55' Bering Yachts Cruiser Electronics



55' Bering Yachts Cruiser Electronics



55' Bering Yachts Cruiser Electric Panel



55' Bering Yachts Cruiser Electric Panel



55' Bering Yachts Cruiser Exit Stairs



55' Bering Yachts Cruiser Pilothouse Fan



55' Bering Yachts Cruiser Electronics



55' Bering Yachts Cruiser Passport



55' Bering Yachts Cruiser VIP



55' Bering Yachts Cruiser VIP



55' Bering Yachts Cruiser Master



55' Bering Yachts Cruiser Master



55' Bering Yachts Cruiser Master



55' Bering Yachts Cruiser Master



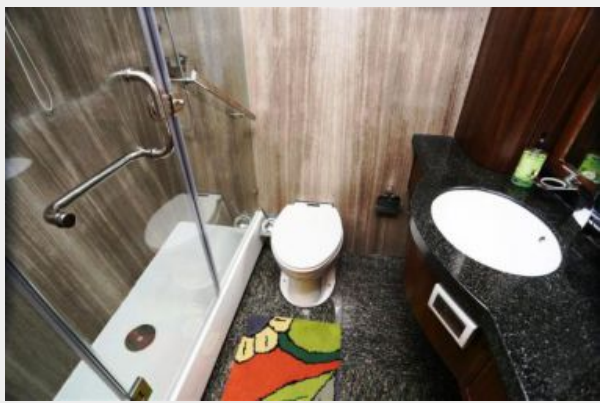
55' Bering Yachts Cruiser VIP Head



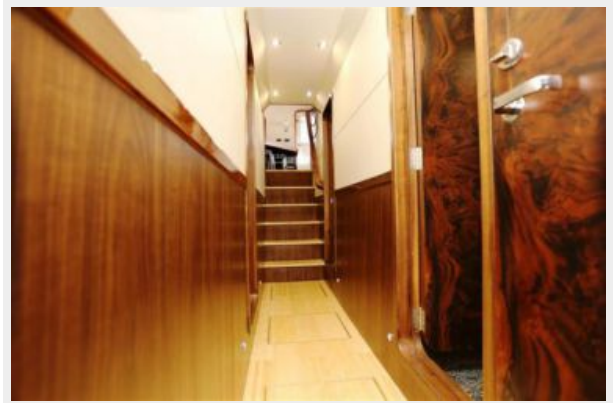
55' Bering Yachts Cruiser VIP Head



55' Bering Yachts Cruiser Master Head



55' Bering Yachts Cruiser Hallway



55' Bering Yachts Cruiser Stateroom



55' Bering Yachts Cruiser Stateroom



55' Bering Yachts Cruiser Engine Room Entry



55' Bering Yachts Cruiser Engine Room Entry



55' Bering Yachts Cruiser Engine Room Entry



55' Bering Yachts Cruiser Engine Room



55' Bering Yachts Cruiser Engine Room



55' Bering Yachts Cruiser Engine Room



55' Bering Yachts Cruiser Engine Room



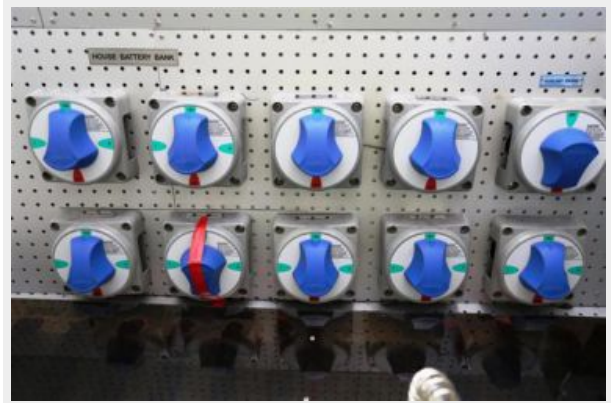
55' Bering Yachts Cruiser Engine Room



55' Bering Yachts Cruiser Engine Room



55' Bering Yachts Cruiser Engine Room



55' Bering Yachts Cruiser Engine Room



55' Bering Yachts Cruiser Engine Room



55' Bering Yachts Cruiser Engine Room



55' Bering Yachts Cruiser Engine Room



55' Bering Yachts Cruiser Engine Room



55' Bering Yachts Cruiser Engine Room



55' Bering Yachts Cruiser Haulout



55' Bering Yachts Cruiser Profile



55' Bering Yachts Cruiser Profile



55' Bering Yachts Cruiser Profile



55' Bering Yachts Cruiser Profile



55' Bering Yachts Cruiser Profile



55' Bering Yachts Cruiser Profile



55' Bering Yachts Cruiser Profile



55' Bering Yachts Cruiser Profile



55' Bering Yachts Cruiser Profile



55' Bering Yachts Cruiser Profile



55' Bering Yachts Cruiser Profile



55' Bering Yachts Cruiser Profile



55' Bering Yachts Cruiser Profile



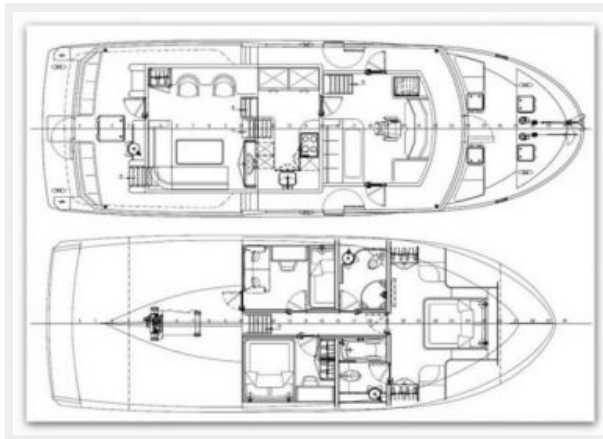
55' Bering Yachts Cruiser Profile



55' Bering Yachts Cruiser Haulout



55' Bering Yachts Cruiser Layout



CONTACTS

Andrey Shestakov, leading yacht broker of the sales department of Shestakov Yacht Sales Inc. Shestakov Yacht Sales Inc., the official representative of the Miami/Fort Lauderdale FL headquarters.

Contact details

Email: andrey@shestakovyachtsales.com

Web: shestakovyachtsales.com/en/

Telephones

USA: +1(954)274-4435

Office hours

Monday – Saturday: **9:00 - 21:00** EDT

Sunday: **closed**

Address



Harbour Towne Marina, 850 NE 3rd St,
STE 213, Dania, FL 33004