

42' POST MARINE 42 1981 — POST MARINE



Builder: Post Marine

LOA: 42' 0" (12.80m)

Year Built: 1981

Beam: 15' 9" (4.80m)

Model: Motor Yacht

Price: PRICE ON APPLICATION

Location: United States

Our experienced yacht broker, Andrey Shestakov, will help you choose and buy a yacht that best suits your needs 42' Post Marine 42 1981 — Post Marine from our catalogue. Presently, at Shestakov Yacht Sales Inc., we have a wide variety of yachts available on our sale's list. We also work in close contact with all the big yacht manufacturers from all over the world.

If you would like to buy a yacht 42' Post Marine 42 1981 — Post Marine or would like help answering any questions concerning purchasing, selling or chartering a yacht, please call +1(954)274-4435

TABLE OF CONTENTS

TABLE OF CONTENTS	2
SPECIFICATIONS	3
Overview	3
Basic Information	3
Dimensions	3
Speed, Capacities and Weight	3
Accommodations	3
Hull and Deck Information	3
Engine Information	4
DETAILED INFORMATION	5
Accommodations	5
Electronics 2	5
Mechanical	5
Electronics 2	6
Mechanical	6
Electronics	6
Deck Features	7
Fishing Equipment	7
Exclusions	7
Disclaimer	7
PHOTOS	9
CONTACTS	11
Contact details	11
Telephones	11
Office hours	11
Address	11

SPECIFICATIONS

Overview

One of the most beautiful hulls ever built The 42' Post continues to be highly sought after on the brokerage market still turning heads in marinas around the world. The flat sections and flared bow produce a dry boat with good lift and speed. This boat has been maintained by her proud owner for the past 10 years and he has priced her to sell quickly.

Take a look and make an offer.

Basic Information

Category: Motor Yacht

Sub Category: Convertible

Model Year: 1981

Year Built: 1981

Country: United States

Dimensions

LOA: 42' 0" (12.80m)

Beam: 15' 9" (4.80m)

Speed, Capacities and Weight

Displacement: 30000 Pounds

Water Capacity: 120 Gallons

Fuel Capacity: 460 Gallons

Accommodations

Total Cabins: 2

Hull and Deck Information

Hull Material: Fiberglass

Engine Information

Engines: 2

Manufacturer: Detroit Diesel

Model: 671 TI

Engine Type: Inboard

DETAILED INFORMATION

Accommodations

Her two-stateroom layout has the queen in the master stateroom located amidships and stacked single berths in the forward stateroom. She has a single head with a separate shower, galley is down and features a full size refrigerator/freezer. The large salon is ideal for entertaining and has a l shaped couch to port and a l shaped settee with table that converts to a double berth. Carpet and upholstery was recently replaced.

Electronics 2

- Caslade/ Yanmar Diesel Generator 10 KW (2000)
- HE-702 color depth sounder.
- Robertson AP-20 auto pilot.
- Sony DVD/CD/Video player, DVP-S360.
- JVC XL-V231 compact disc player.
- JVC RX-403 p~m/Fm computer controlled receiver.
- JVC digital VHS.
- Sitex/Koden Ioran C-797.
- Furuno GP-1850D color D GPS plotter. Trim tabs. (Boat levelers)
- Garmin GPS 75.
- Furuno FCV-582L.
- Raytheon RAV45 VHF.
- Icom IC-M80 VHF. Raytheon R20X radar.
- GE freezer at aft deck. Storage box at starboard aft deck.
- Forward docking lights.
- Emerson 13" color TV at main salon.

Mechanical

- Caslade/ Yanmar Diesel Generator 10 KW
- CruiseAir air conditioning with digital controls
- Automatic bilge pumps
- Fresh water cooling system;
- Lube oil transfer pump
- Hydraulic steering
- LectraSan electric head with chemical tank
- Raw water circulating pump
- 33# Halon fire extinguishing system
- Trim tabs

- Raritan 40 amp battery charger; (2)
- 12 volt batteries to engines with vapor-proof switches
- Halon release sensor
- (2) Hubbell 50 amp 125

Electronics 2

- Furuno 1850D Color GPS Plotter
- Raytheon R-20X Radar
- Sitex Kodon C-797 Loran
- Furuno FCV-582L Color Bottom Recorder
- ACR Searchlight w/Remote
- Danforth Constellation Compass
- Dytex Sea Water Temp
- Ray 350 Loud Hailer
- Robertson Autopilot
- Garmin 75 GPS
- Sitex Fish Finder
- ICOM IC-M56 VHF Radio
- (2) VHF Antennas

Mechanical

- Caslade/ Yanmar Diesel Generator 10 KW
- CruiseAir air conditioning with digital controls
- Automatic bilge pumps
- Fresh water cooling system;
- Lube oil transfer pump
- Hydraulic steering
- LectraSan electric head with chemical tank
- Raw water circulating pump
- 33# Halon fire extinguishing system
- Trim tabs
- Raritan 40 amp battery charger; (2)
- 12 volt batteries to engines with vapor-proof switches
- Halon release sensor
- (2) Hubbell 50 amp 125

Electronics

- Furuno 1850D Color GPS Plotter

- Raytheon R-20X Radar
- Sitex Kodon C-797 Loran
- Furuno FCV-582L Color Bottom Recorder
- ACR Searchlight w/Remote
- Danforth Constellation Compass
- Dytek Sea Water Temp
- Ray 350 Loud Hailer
- Robertson Autopilot
- Garmin 75 GPS
- Sitex Fish Finder
- ICOM IC-M56 VHF Radio
- (2) VHF Antennas

Deck Features

Ideal electric windlass; ob; Coast Guard safety package; life jackets/rings; search lights; fresh and salt water washdown system; dockside water connection; port and starboard water fill; telephone and TV inlet; ladder to bridge; Igloo 162 quart cooler; 5" bell; stainless grab rail; mounted helm and companion chairs; bench seat with storage, cushions; stern lights; 18# anchor, Fortress FX-37 anchor with 6' chain and 300' 5/8" nylon rode; teak and fiberglass bow pulpit; stainless steel stanchions with handrails and bow rail. 600# Low-Profile davit

Fishing Equipment

- Rupp outriggers
- (4) flush-mount gunwale rod holders
- Tackle center to port with stainless sink
- Cockpit Engine controls
- Tuna door
- Bait freezer in cockpit

Exclusions

Owner's personal belongings.

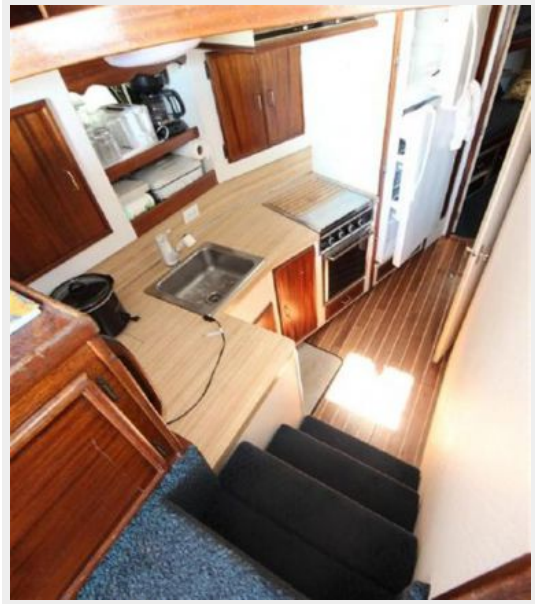
Disclaimer

The Company offers the details of this vessel or yacht in good faith but cannot guarantee or warrant the accuracy of this information nor warrant the condition of the vessel. A buyer should instruct his representatives, agents, or his surveyors, to investigate such details as the buyer desires validated. This vessel or yacht is offered subject to prior sale, price change, or withdrawal

without notice.

PHOTOS





CONTACTS

Andrey Shestakov, leading yacht broker of the sales department of Shestakov Yacht Sales Inc. Shestakov Yacht Sales Inc., the official representative of the Miami/Fort Lauderdale FL headquarters.

Contact details

Email: andrey@shestakovyachtsales.com

Web: shestakovyachtsales.com/en/

Telephones

USA: +1(954)274-4435

Office hours

Monday – Saturday: **9:00 - 21:00** EDT

Sunday: **closed**

Address



Harbour Towne Marina, 850 NE 3rd St,
STE 213, Dania, FL 33004