

THE BLACK DOG — VIKING SPORT CRUISERS



Builder: VIKING SPORT CRUISERS

Year Built: 2005

Model: Motor Yacht

Price: PRICE ON APPLICATION

Location: United States

LOA: 75' 0" (22.86m)

Beam: 19' 0" (5.79m)

Max Draft: 5' 3" (1.60m)

Cruise Speed: 31 Kts. (36 MPH)

Max Speed: 35 Kts. (40 MPH)

Our experienced yacht broker, Andrey Shestakov, will help you choose and buy a yacht that best suits your needs **THE BLACK DOG — VIKING SPORT CRUISERS** from our catalogue. Presently, at Shestakov Yacht Sales Inc., we have a wide variety of yachts available on our sale's list. We also work in close contact with all the big yacht manufacturers from all over the world.

If you would like to buy a yacht **THE BLACK DOG — VIKING SPORT CRUISERS** or would like help answering any questions concerning purchasing, selling or chartering a yacht, please call **+1(954)274-4435**

TABLE OF CONTENTS

TABLE OF CONTENTS	2
SPECIFICATIONS	4
Overview	4
Basic Information	4
Dimensions	4
Speed, Capacities and Weight	5
Accommodations	5
Hull and Deck Information	5
Engine Information	5
DETAILED INFORMATION	6
Interior	6
Salon	6
Dining	7
Galley	7
Master Stateroom	7
Master Head	7
VIP Stateroom	7
Guest Stateroom Starboard	8
Guest Stateroom Port	8
Crew Cabin	8
Lazarette	8
Engine Room	8
Navigational Equipment	9
Deck Equipment	9
Aft Deck	9
Fly Bridge	10
Exterior	10
Exclusions	10

Exclusions	10
Disclaimer	10
PHOTOS	12
Salon	12
Salon	12
Galley	12
Dining	12
Master Stateroom	12
Head	12
Guest Stateroom	13
Guest Stateroom	13
Pilothouse	13
Pilothouse	13
Aft Deck	13
Flybridge	13
Flybridge Helm	14
Flybridge Helm	14
Stern	14
CONTACTS	15
Contact details	15
Telephones	15
Office hours	15
Address	15

SPECIFICATIONS

Overview

Entering from the cockpit the salon is wide and open. Access is through a large stainless steel and glass sliding door with a large window to the port side that opens at the touch of a button. The salon is great for entertaining with seating to port and a smaller sofa to starboard. A custom stereo with surround sound with television that raises and lowers behind the sofa. The stairway up to the flybridge is to starboard just aft of the formal dining table that comes with seating for eight. The galley is to port and can be opened or closed off to the dining salon area. There is a door for direct access to the port-side deck. The lower helm station is forward starboard side with a circular seating area and table to the port side. There is a stairway between these two areas leading down to the lower passageway and cabins. In the lower passageway are storage lockers along with washer and dryer units. The full beam master stateroom is aft. This cabin has a centerline king sized berth, a vanity desk with stool to starboard and a small seating area to port. The walk-in closet is aft to starboard and access to the large head with tub and shower is aft to port. The VIP cabin is forward with a queen sized berth, great storage and closets and an en suite head. There are two additional guest cabins midship, the portside cabin comes with inboard and outboard single berths, storage, and the head is forward. The starboard guest cabin has a lower outboard fore and aft single and an upper port to starboard single with the head aft. This head is also accessed from the passageway.

Basic Information

Category: Motor Yacht

Model Year: 2006

Year Built: 2005

Country: United States

Vessel Top: Hardtop

Dimensions

LOA: 75' 0" (22.86m)

Beam: 19' 0" (5.79m)

Max Draft: 5' 3" (1.60m)

Speed, Capacities and Weight

Cruise Speed: 31 Kts. (36 MPH)

Cruise Speed RPM: 2100 Kts.

Max Speed: 35 Kts. (40 MPH)

Displacement: 100000 Pounds

Water Capacity: 365 Gallons

Holding Tank: 200 Gallons

Fuel Capacity: 1525 Gallons

Accommodations

Total Cabins: 4

Sleeps: 8

Total Heads: 4

Crew Cabin: 1

Crew Heads: 1

Hull and Deck Information

Hull Material: Fiberglass

Hull Configuration: Modified Deep Vee

Engine Information

Manufacturer: Caterpillar

Model: C32

Engine Type: Inboard

Fuel Type: Diesel

DETAILED INFORMATION

Interior

Entering from the cockpit the salon is wide and open. Access is through a large stainless steel and glass sliding door with a large window to the port side. The salon is great for entertaining with seating to port and a smaller sofa to starboard is a custom stereo that is wired to the LCD TV that raises and lowers from behind the sofa.

The stairway up to the flybridge is to starboard just aft of the formal dining table that comes with seating for eight. There are numerous lockers outboard of this area. The galley is to port and can be opened or closed off to the dining salon area. There is a door outboard for direct access to the port side deck.

The lower helm station is forward starboard side with a circular seating area and table for lounging to the port side. There is a stairway between these two areas leading down to the lower passageway and cabins.

In the lower passageway there are storage lockers along with washer and dryer units.

The full beam master stateroom is aft. This cabin comes with a centerline king sized berth, a vanity desk with stool to starboard and a small seating area to port. The walk-in closet is aft to starboard and access to the large head with tub and shower is aft to port.

The VIP cabin is forward with a queen sized berth, great storage, closets and an en suite head.

There are two additional guest cabins midship, the portside cabin comes with inboard and outboard single berths, good storage and the head is forward.

The starboard guest cabin has a lower outboard fore and aft single and an upper port to starboard single with the head aft. This head is also accessed from the passageway.

Salon

- Cherry wood interior
- Custom liquor cabinet
- Bose home theater system
- TV on motorized raise/lower mechanism
- Custom lighting dimmers throughout
- Wine cooler
- Cruisair heat and air conditioning controls
- Blinds
- Rear salon port window folds down to access aft deck

Dining

- Dining table for 6 mounted on a slider
- Storage lockers
- Custom blinds

Galley

- 4 burner electric, glass top stove with overhead lighting and fan
- Microwave
- Ice maker
- Garbage disposal
- Dishwasher
- CompactorCustom granite countertop
- Custom blinds
- Cruisair heat and air conditioning controls

Master Stateroom

- King berth
- Makeup desk with stool
- 32" LED screen satellite TV
- CD/DVD/AM/FM stereo
- Large walk in hanging locker
- Cruisair heat and air conditioning controls
- Large opening portlights

Master Head

- Shower with tub
- Cruisair heat and air conditioning controls
- Opening port lights
- Custom blinds

VIP Stateroom

- Queen island berth
- 15" LCD TV
- CD/DVD/AM/FM stereo
- Cruisair heat and air conditioning controls

- 18" opening hatch in overhead

Guest Stateroom Starboard

- Bunk beds
- 15" LCD TV
- Cruisair heat and air conditioning controls

Guest Stateroom Port

- Bunk beds
- 15" LCD TV
- Cruisair heat and air conditioning controls

Crew Cabin

- 15" LCD TV
- Cruisair heat and air conditioning controls

Lazarette

- Duplex 110V GFI outlet
- Freezer/Fridge
- Storage

Engine Room

- 2 1675 C 32 Cats
- 27.5 kW Onan Generator
- 2 Fuel tanks
- 600 GPD Sea Recovery Watermaker
- Glendenning shore cords 2 x 50 amp
- Isolation transformer
- Wired for Panasonic phone system
- 6 A/C units
- Duplex 110v GFI outlet

Navigational Equipment

- (2) Furuno 1944C Navnet VX2 GPS/Chartplotter/Radar/Sounder (separate Radar/Plotter - Pilothouse)
- North Star 6000i WAAS GPS/Plotter on bridge
- (2) Furuno RD30 speed and depth log (independent transducer)
- Furuno dual station autopilot
- ICOM VHF on Bridge and an ICOM at Pilothouse
- Buel Air Horns
- SAT TV
- SAT phone
- CAT Engine displays
- Bow Thruster (Pilothouse and Flybridge)
- Stern Thruster (Pilothouse and Flybridge)
- Trim tabs
- ACR Searchlight

Deck Equipment

The side decks are wide and allow easy access forward to the fore deck. The anchor windlass is securely installed forward on the centerline with a deck hatch to starboard for access to the chain locker. There is a sun lounge area on the centerline, plus 2 large storage lockers to port and starboard.

- Teak decks
- Lewmar windlass
- Anchor winch
- Anchor wash down
- Marquipt davit
- Docking lights
- Underwater lights
- Stainless steel deck hardware

Aft Deck

Aft deck comes with a large bench seat aft with a teak table and 2 chairs. There are port and starboard mooring capstans plus rope lockers at each one. There are forward port and starboard lockers, the port side one is a storage locker and the remote fuel tank shut-offs and manual bilge

pump with selector valves are in the starboard locker. There are engine/transmission controls plus the bow and stern thruster controls inside a small cover forward to starboard.

- Aft docking station
- (2) Glendinning cable masters
- Bow thruster
- Stern thruster
- Custom dimming exterior lighting
- Hot and cold shower
- 2 Windlasses
- Passarelle
- 2nd engine room access starboard

Fly Bridge

The flybridge is accessed from the aft deck with molded steps and from the salon via a spiral staircase. The helm is on the centerline with all engine controls, gauges and electronics located in an opening dash that can be raised and lowered. Aft of the helm seat is a console with the sink and BBQ. There is a large seating area with a table to port aft and forward, separated by a 24 volt drink cooler aft of the sun lounge area. There is storage below the seating area. The flybridge has a full EZ2CY enclosure, arch and custom hardtop and is air conditioned.

Exterior

Layout includes a large swim platform. There is a large storage area in the transom that is accessed through a powered hatch. There is a door in the transom for access to crew's cabin and engine room.

Exclusions

Tender not included

Exclusions

Owner's personal belongings.

Disclaimer

The Company offers the details of this vessel or yacht in good faith but cannot guarantee or warrant the accuracy of this information nor warrant the condition of the vessel. A buyer should instruct his representatives, agents, or his surveyors, to investigate such details as the buyer

desires validated. This vessel or yacht is offered subject to prior sale, price change, or withdrawal without notice.

PHOTOS

Salon



Salon



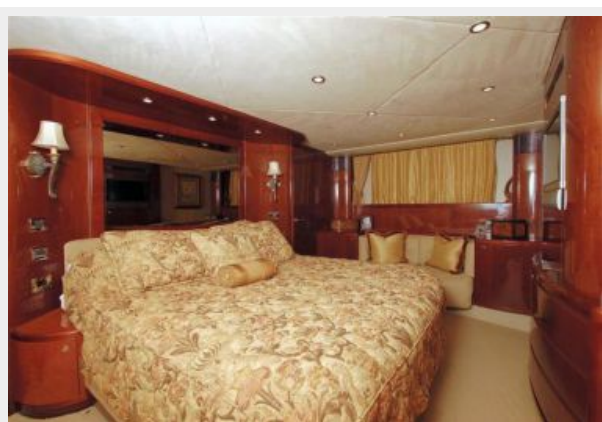
Dining



Galley



Master Stateroom



Head



Guest Stateroom



Guest Stateroom



Pilothouse



Pilothouse



Aft Deck



Flybridge



Flybridge Helm



Flybridge Helm



Stern



CONTACTS

Andrey Shestakov, leading yacht broker of the sales department of Shestakov Yacht Sales Inc. Shestakov Yacht Sales Inc., the official representative of the Miami/Fort Lauderdale FL headquarters.

Contact details

Email: **andrey@shestakovyachtsales.com**

Web: shestakovyachtsales.com/en/

Telephones

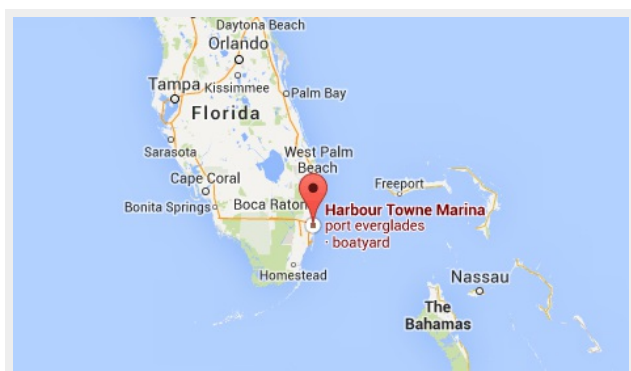
USA: **+1(954)274-4435**

Office hours

Monday – Saturday: **9:00 - 21:00 EDT**

Sunday: **closed**

Address



Harbour Towne Marina, 850 NE 3rd St,
STE 213, Dania, FL 33004