

THE BLACK DOG — VIKING SPORT CRUISERS



Судостроитель:
VIKING SPORT CRUISERS

Год постройки: 2005

Модель: Моторная яхта

Цена: ЦЕНА ЯХТЫ ПО ЗАПРОСУ

Местонахождение: United States

Длина общая: 75' 0" (22.86m)

Ширина: 19' 0" (5.79m)

Макс. осадка: 5' 3" (1.60m)

Крейс. скорость: 31 Kts. (36 MPH)

Макс. скорость: 35 Kts. (40 MPH)

Купить **THE BLACK DOG — VIKING SPORT CRUISERS** а также выбрать подходящую вам яхту из нашего каталога яхт вам поможет опытный яхтенный брокер Андрей Шестаков. На сегодняшний день компания **Shestakov Yacht Sales Inc.** имеет большое количество яхт в собственном списке продаж, а также тесно сотрудничает со всеми крупными яхтенными производителями по всему миру.

Для того чтобы купить яхту **THE BLACK DOG — VIKING SPORT CRUISERS** а также проконсультироваться по любому вопросу связанному с покупкой, продажей, чартером яхт позвоните по телефону **+7(918)465-66-44**.

ОГЛАВЛЕНИЕ

ОГЛАВЛЕНИЕ	2
ХАРАКТЕРИСТИКИ	4
Обзор	4
Основная информация	4
Размеры	4
Скорость, вместимость и масса	5
Размещение	5
Корпус и палуба	5
Информация о двигателе	5
ПОДРОБНОЕ ОПИСАНИЕ	6
Interior	6
Salon	6
Dining	7
Galley	7
Master Stateroom	7
Master Head	7
VIP Stateroom	7
Guest Stateroom Starboard	8
Guest Stateroom Port	8
Crew Cabin	8
Lazarette	8
Engine Room	8
Navigational Equipment	9
Deck Equipment	9
Aft Deck	9
Fly Bridge	10
Exterior	10
Exclusions	10

Исключения	10
Отказ от ответственности	10
ФОТОГРАФИИ	12
Salon	12
Salon	12
Galley	12
Dining	12
Master Stateroom	12
Head	12
Guest Stateroom	13
Guest Stateroom	13
Pilothouse	13
Pilothouse	13
Aft Deck	13
Flybridge	13
Flybridge Helm	14
Flybridge Helm	14
Stern	14
КОНТАКТЫ	15
Контактная информация	15
Телефоны	15
Время работы	15
Адрес	15

ХАРАКТЕРИСТИКИ

Обзор

Entering from the cockpit the salon is wide and open. Access is through a large stainless steel and glass sliding door with a large window to the port side that opens at the touch of a button. The salon is great for entertaining with seating to port and a smaller sofa to starboard. A custom stereo with surround sound with television that raises and lowers behind the sofa. The stairway up to the flybridge is to starboard just aft of the formal dining table that comes with seating for eight. The galley is to port and can be opened or closed off to the dining salon area. There is a door for direct access to the port-side deck. The lower helm station is forward starboard side with a circular seating area and table to the port side. There is a stairway between these two areas leading down to the lower passageway and cabins. In the lower passageway are storage lockers along with washer and dryer units. The full beam master stateroom is aft. This cabin has a centerline king sized berth, a vanity desk with stool to starboard and a small seating area to port. The walk-in closet is aft to starboard and access to the large head with tub and shower is aft to port. The VIP cabin is forward with a queen sized berth, great storage and closets and an en suite head. There are two additional guest cabins midship, the portside cabin comes with inboard and outboard single berths, storage, and the head is forward. The starboard guest cabin has a lower outboard fore and aft single and an upper port to starboard single with the head aft. This head is also accessed from the passageway.

Основная информация

Тип судна: Моторная яхта

Модельный год: 2006

Год постройки: 2005

Страна: United States

Верх: Hardtop

Размеры

Длина общая: 75' 0" (22.86m)

Ширина: 19' 0" (5.79m)

Макс. осадка: 5' 3" (1.60m)

Скорость, вместимость и масса

Крейс. скорость: 31 Kts. (36 MPH)

Крейсерская скорость поворота: 2100 Kts.

Макс. скорость: 35 Kts. (40 MPH)

Водоизмещение: 100000 Pounds

Вместимость воды: 365 Gallons

Вместимость сточного бака: 200 Gallons

Объем топливного бака: 1525 Gallons

Размещение

Всего кают: 4

Спальные места: 8

Всего ком. состава: 4

Каюты экипажа: 1

Комм. состав экипажа: 1

Корпус и палуба

Материал корпуса: Fiberglass

Комплектация корпуса: Modified Deep Vee

Информация о двигателе

Производитель: Caterpillar

Модель: C32

Тип двигателя: Inboard

Тип топлива: Diesel

ПОДРОБНОЕ ОПИСАНИЕ

Interior

Entering from the cockpit the salon is wide and open. Access is through a large stainless steel and glass sliding door with a large window to the port side. The salon is great for entertaining with seating to port and a smaller sofa to starboard is a custom stereo that is wired to the LCD TV that raises and lowers from behind the sofa.

The stairway up to the flybridge is to starboard just aft of the formal dining table that comes with seating for eight. There are numerous lockers outboard of this area. The galley is to port and can be opened or closed off to the dining salon area. There is a door outboard for direct access to the port side deck.

The lower helm station is forward starboard side with a circular seating area and table for lounging to the port side. There is a stairway between these two areas leading down to the lower passageway and cabins.

In the lower passageway there are storage lockers along with washer and dryer units.

The full beam master stateroom is aft. This cabin comes with a centerline king sized berth, a vanity desk with stool to starboard and a small seating area to port. The walk-in closet is aft to starboard and access to the large head with tub and shower is aft to port.

The VIP cabin is forward with a queen sized berth, great storage, closets and an en suite head.

There are two additional guest cabins midship, the portside cabin comes with inboard and outboard single berths, good storage and the head is forward.

The starboard guest cabin has a lower outboard fore and aft single and an upper port to starboard single with the head aft. This head is also accessed from the passageway.

Salon

- Cherry wood interior
- Custom liquor cabinet
- Bose home theater system
- TV on motorized raise/lower mechanism
- Custom lighting dimmers throughout
- Wine cooler
- Cruisair heat and air conditioning controls
- Blinds
- Rear salon port window folds down to access aft deck

Dining

- Dining table for 6 mounted on a slider
- Storage lockers
- Custom blinds

Galley

- 4 burner electric, glass top stove with overhead lighting and fan
- Microwave
- Ice maker
- Garbage disposal
- Dishwasher
- Compactor Custom granite countertop
- Custom blinds
- Cruisair heat and air conditioning controls

Master Stateroom

- King berth
- Makeup desk with stool
- 32" LED screen satellite TV
- CD/DVD/AM/FM stereo
- Large walk in hanging locker
- Cruisair heat and air conditioning controls
- Large opening portlights

Master Head

- Shower with tub
- Cruisair heat and air conditioning controls
- Opening port lights
- Custom blinds

VIP Stateroom

- Queen island berth
- 15" LCD TV
- CD/DVD/AM/FM stereo
- Cruisair heat and air conditioning controls

- 18" opening hatch in overhead

Guest Stateroom Starboard

- Bunk beds
- 15" LCD TV
- Cruisair heat and air conditioning controls

Guest Stateroom Port

- Bunk beds
- 15" LCD TV
- Cruisair heat and air conditioning controls

Crew Cabin

- 15" LCD TV
- Cruisair heat and air conditioning controls

Lazarette

- Duplex 110V GFI outlet
- Freezer/Fridge
- Storage

Engine Room

- 2 1675 C 32 Cats
- 27.5 kW Onan Generator
- 2 Fuel tanks
- 600 GPD Sea Recovery Watermaker
- Glendenning shore cords 2 x 50 amp
- Isolation transformer
- Wired for Panasonic phone system
- 6 A/C units
- Duplex 110v GFI outlet

Navigational Equipment

- (2) Furuno 1944C Navnet VX2 GPS/Chartplotter/Radar/Sounder (separate Radar/Plotter - Pilothouse)
- North Star 6000i WAAS GPS/Plotter on bridge
- (2) Furuno RD30 speed and depth log (independent transducer)
- Furuno dual station autopilot
- ICOM VHF on Bridge and an ICOM at Pilothouse
- Buel Air Horns
- SAT TV
- SAT phone
- CAT Engine displays
- Bow Thruster (Pilothouse and Flybridge)
- Stern Thruster (Pilothouse and Flybridge)
- Trim tabs
- ACR Searchlight

Deck Equipment

The side decks are wide and allow easy access forward to the fore deck. The anchor windlass is securely installed forward on the centerline with a deck hatch to starboard for access to the chain locker. There is a sun lounge area on the centerline, plus 2 large storage lockers to port and starboard.

- Teak decks
- Lewmar windlass
- Anchor winch
- Anchor wash down
- Marquipt davit
- Docking lights
- Underwater lights
- Stainless steel deck hardware

Aft Deck

Aft deck comes with a large bench seat aft with a teak table and 2 chairs. There are port and starboard mooring capstans plus rope lockers at each one. There are forward port and starboard lockers, the port side one is a storage locker and the remote fuel tank shut-offs and manual bilge

pump with selector valves are in the starboard locker. There are engine/transmission controls plus the bow and stern thruster controls inside a small cover forward to starboard.

- Aft docking station
- (2) Glendinning cable masters
- Bow thruster
- Stern thruster
- Custom dimming exterior lighting
- Hot and cold shower
- 2 Windlasses
- Passarelle
- 2nd engine room access starboard

Fly Bridge

The flybridge is accessed from the aft deck with molded steps and from the salon via a spiral staircase. The helm is on the centerline with all engine controls, gauges and electronics located in an opening dash that can be raised and lowered. Aft of the helm seat is a console with the sink and BBQ. There is a large seating area with a table to port aft and forward, separated by a 24 volt drink cooler aft of the sun lounge area. There is storage below the seating area. The flybridge has a full EZ2CY enclosure, arch and custom hardtop and is air conditioned.

Exterior

Layout includes a large swim platform. There is a large storage area in the transom that is accessed through a powered hatch. There is a door in the transom for access to crew's cabin and engine room.

Exclusions

Tender not included

Исключения

При продаже яхты исключаются личные вещи владельца.

Отказ от ответственности

Компания предоставляет описание судна или яхты добросовестно, но не может гарантировать точность этой информации, а также не ручается за техническое состояние. Покупатель должен проинструктировать своих агентов или оценщиков

исследовать представленную информацию более подробно, по собственному желанию. Продажа судна или яхты, изменение цены или снятие с продажи будет происходить без предварительного уведомления.

ФОТОГРАФИИ

Salon



Salon



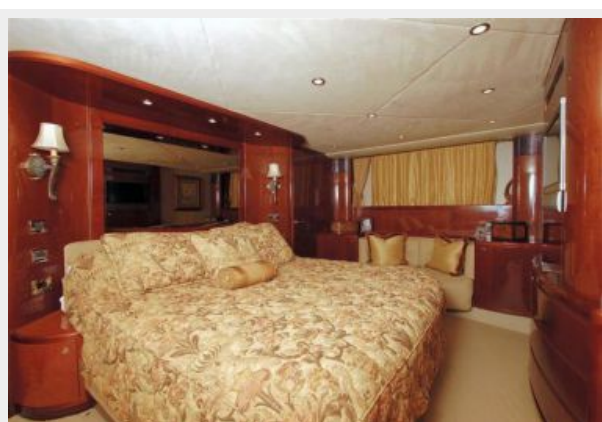
Dining



Galley



Master Stateroom



Head



Guest Stateroom



Guest Stateroom



Pilothouse



Pilothouse



Aft Deck



Flybridge



Flybridge Helm



Flybridge Helm



Stern



КОНТАКТЫ

Андрей Шестаков (Andrey Shestakov) – ведущий яхтенный брокер отдела продаж яхт и судов компании Shestakov Yacht Sales Inc. Официальный представитель Shestakov Yacht Sales Inc. для русскоговорящих клиентов в центральном офисе компании в Майами/Форт Лодердейл/Флорида/США.

Контактная информация

Email: andrey@shestakovyachtsales.com

Web: shestakovyachtsales.com

Телефоны

Краснодарский край: **+7(918)465-66-44**

США, Майами, Флорида: **+1(954)274-4435**

Время работы

Понедельник – Суббота: **9:00 - 21:00**
EDT

Воскресенье: **Закрито**

Адрес



Harbour Towne Marina, 850 NE 3rd St,
STE 213, Dania, FL 33004