

SILENT WINGS — DERECKTOR



Судостроитель: DEREKTOR

Год постройки: 1990

Модель: Моторная яхта

Цена: **ЦЕНА ЯХТЫ ПО ЗАПРОСУ**

Местонахождение: United States

Длина общая: 104' 0" (31.70m)

Ширина: 25' 6" (7.77m)

Мин. осадка: 5' 6" (1.68m)

Макс. осадка: 5' 6" (1.68m)

Крейс. скорость: 9 Kts. (10 MPH)

Макс. скорость: 12 Kts. (14 MPH)

Купить **SILENT WINGS — DEREKTOR** а также выбрать подходящую вам яхту из нашего каталога яхт вам поможет опытный яхтенный брокер Андрей Шестаков. На сегодняшний день компания **Shestakov Yacht Sales Inc.** имеет большое количество яхт в собственном списке продаж, а также тесно сотрудничает со всеми крупными яхтенными производителями по всему миру.

Для того чтобы купить яхту **SILENT WINGS — DEREKTOR** а также проконсультироваться по любому вопросу связанному с покупкой, продажей, чартером яхт позвоните по телефону **+7(918)465-66-44**.

ОГЛАВЛЕНИЕ

ОГЛАВЛЕНИЕ	2
ХАРАКТЕРИСТИКИ	5
Обзор	5
Основная информация	5
Размеры	5
Скорость, вместимость и масса	5
Размещение	5
Корпус и палуба	6
Информация о двигателе	6
ПОДРОБНОЕ ОПИСАНИЕ	7
Accommodations	7
Galley	7
Staterooms	8
Pilothouse	8
Flybridge	9
Hull and Deck	9
Machinery	10
Electrical	10
Owner's Notes	11
Исключения	12
Отказ от ответственности	12
ФОТОГРАФИИ	13
GA Plans	13
Salon	13
Salon	13
Salon	13
Salon	13
Salon	13

Galley	14
Galley	14
Galley	14
Hall Galley	14
Dinette	14
Dining	14
Dining	15
Master Stateroom	15
Master Stateroom	15
Master Stateroom	15
Master Bathroom	15
Master Stateroom	15
Master Bathroom	16
VIP Stateroom	16
VIP Stateroom	16
VIP Stateroom	16
VIP Stateroom	16
VIP Stateroom	16
VIP Stateroom	16
VIP Bathroom	17
Guest Stateroom	17
Guest Stateroom	17
Guest Stateroom	17
Guest Stateroom	17
Guest Stateroom	17
Guest Bathroom	18
Washer	18
Dryer	18
Controls	18
Desk	19

Office	19
Hall	19
Pilothouse	19
Office	19
Pilothouse	19
Pilothouse	20
Pilothouse Recliner	20
Stairs	20
Stairs	20
Stairway	20
Aft Deck	20
Flybridge	21
Aft Deck	21
Flybridge	21
Flybridge Seating	21
Flybridge Seating	21
Jacuzzi	21
Engine Room	22
Engine Room	22
Engine Room	22
Engine Room	22
Engine Room	22
КОНТАКТЫ	23
Контактная информация	23
Телефоны	23
Время работы	23
Адрес	23

ХАРАКТЕРИСТИКИ

Обзор

Silent Wings was custom built in New York by Derecktor Shipyard, the same company that built the 281 foot Cakewalk, launched in 2010 as the largest private yacht built in the U.S. Silent Wings is a 5'6" shallow draft yacht with three staterooms plus crew and has a 25'6" beam, giving the yacht great interior volume and expansive deck areas. The interior condition of the yacht is excellent with beautiful English walnut paneling throughout. "Owner will consider trades of smaller boats." Will also consider trade for late model Newell or Prevost Motor Coach.

Основная информация

Тип судна: Моторная яхта

Модельный год: 1990

Год постройки: 1990

Страна: United States

Открытая палуба мостика: Да

Размеры

Длина общая: 104' 0" (31.70m)

Длина по ватерлинии: 88' 6" (26.97m)

Длина палубы: 104' 0" (31.70m)

Ширина: 25' 6" (7.77m)

Мин. осадка: 5' 6" (1.68m)

Макс. осадка: 5' 6" (1.68m)

Скорость, вместимость и масса

Крейс. скорость: 9 Kts. (10 MPH)

Макс. скорость: 12 Kts. (14 MPH)

Вместимость воды: 1700 Gallons

Объем топливного бака: 6600 Gallons

Размещение

Всего кают: 3

Спальные места: 6

Каюты экипажа: 2

Койки экипажа: 4

Корпус и палуба

Материал корпуса: Aluminum

Дизайнер экстерьера: Diana Yacht Design

Информация о двигателе

Двигатели: 2

Производитель: MTU

Модель: 16V396TB84

Тип двигателя: Inboard

Тип топлива: Diesel

ПОДРОБНОЕ ОПИСАНИЕ

Accommodations

The first impression when entering the main salon is a large living space enclosed by beautifully hand crafted English walnut paneling. An interesting design feature of this yacht is the large windows to each side that can open. Along with the double doors to the aft deck this feature allows the yacht to be opened for fresh air when the weather permits rather than always using the air conditioning. When desired for privacy or to block the sun, are louvered window shutters of the same walnut as the rest of the interior that can be opened or closed. At the forward end of the saloon is a dining area with a glass top table for eight. Storage for china, glasses, linens and more is plentiful to each side. The table and chairs are custom laminate of horn and epoxy for an interesting counterpoint to the richness of the English walnut paneling. There is an entertainment center located behind paneled doors, storage for glasses and china behind the painting and a wine locker. Aft of the dining area is a low room divider for storage that delineates the spaces but does not take away from the open expansive feeling of the salon. Behind the divider to the port side is a conversation area with three large overstuffed comfortable chairs with three small tables. Glass front doors open to shelving for books. On the other side of the saloon is a coffee table with a long couch with a chaise section to stretch out at one end. Forward of the salon is the midship door from the starboard side deck for convenient access to the interior with the stairs to cabins below. The day head is located here and a closet with clothes washer and dryer. There is an on deck VIP stateroom that could be used as a master, with the same English walnut paneling and large windows with wood shutters. Open shelves and closed cabinets offer plentiful storage and the mirrored wall behind the king size bed opens the room even more. An interesting feature of this stateroom is that it has its own door to the side deck and the head for this cabin also has a door to the deck. This head then can be used from the aft deck without going inside with wet bathing suits.

Galley

Between the dining area and the forward galley is a steward's area with marble counter top, storage for crystal and liquors. With an under counter refrigerator here, this makes an area that can be used as a bar or for food preparation or buffet serving area.

The galley is all the way forward with ample counter space for meals for many guests. A table with bench seat gives room for crew or for informal lunches or snacks. Like much of the rest of the yacht, consideration was given to natural ventilation with two large hatches in the overhead for natural light and air.

- Kitchen Aid 5 burner stove
- Kitchen Aid oven
- Ice maker
- Whirlpool trash compactor

- Dishwasher
- Microwave convection oven

Staterooms

Access to the lower staterooms is midship down a spiral staircase. The midship master stateroom being is full beam of the yacht. Finished in the same English walnut paneling as the rest of the yacht the ambiance is traditional elegance. The centerline king size berth has large end tables with three drawers to each side and additional storage below. Since the beam of this yacht is 25 feet there is plenty of room for an “L” shaped couch to one side and vanity to the other side. Good headroom and a mirrored wall behind the king bed adds to the overall feeling of ample size to the master. His and hers heads with marble floors and counters are aft of the master which helps reduce any noise from the engine room, and there is an emergency exit from the head into the engine room to go aft. Her bathroom has a bidet and whirlpool bath and separate stall shower.

The third stateroom crafted in the same English walnut has two single berths to allow the most versatility for family or guests and has an ensuite head with stall shower. Like the other staterooms the portholes are oversize to let in natural light or air.

Pilothouse

The raised pilothouse has large ship style vertical windows giving the room a much more open feeling than the more typical slanted windows, and these large windows give a full 180 degree view to both sides of the yacht. Besides the two helm seats there is a raised seating platform with two theater style seats for observation while underway. A captain’s office has plentiful storage to keep all of the yachts papers organized and accessible and functions as a navigation and communication station.

- C-Plath gyro compass
- Autopilot
- Ritchie Compass
- Single side band radio
- VHF radio
- Furuno FR 1525 Mark 3 Radar (two radars)
- Nobeltec GPS plotter system
- 15” Nauticomp display
- B&G digital depth, speed, and wind indicators
- Trac stabilizer controls

- Bow thruster control
- SSB radio condition unknown
- Northstar 941 X GPS
- Trac 440 digital stabilizers with 29 square foot fins
- Three six ton reverse cycle Cruise Air conditioners, chilled water
- Toshiba frequency drives for Air conditioning

Flybridge

The flybridge is accessible from the pilothouse or from the aft deck. There are “L” shaped bench seats to either side and tables at each bench. Covering the flybridge is a soft Bimini top that can be opened for more sun if wanted. Aft is the boat deck that has been used extensively as a patio. There is room for a 17’ tender here (no tender included) and the two Cramm davits each have a 2400 pound capacity. Previous owners had two personal watercraft here but the current use is for entertaining, with sectional outdoor furniture and the entire aft flybridge deck has a sunshade with stainless supports. This cover allows air and water to pass thru but keeps the sun off. At the forward end of the entertainment is a flat screen TV and the hot tub is located aft on the other side. The two person hot tub is a later addition that was mounted in the corner of the bridge so as to not take too much room, and can be removed easily if not wanted. At the stern end is a captain’s docking station with full engine controls. These controls are attached by a long extension cable and the controls can be moved all the way to the aft deck for docking.

- Brookes and Gatehouse Weather instruments,
- Brookes and Gatehouse electronic compass,
- Brookes and Gatehouse depth sounder
- Brookes and Gatehouse knot log
- KaMeWa jet drive controls
- Nauticomp computer display
- Trac 440 digital stabilizers with 29 square foot fins
- Three six ton reverse cycle Cruise Air conditioners, chilled water
- Toshiba frequency drives for Air conditioning

Hull and Deck

The teak covered aft deck is enormous with the full 25’ beam. There is a long “U” shaped bench with two tables to either end so that guests can have easy access to the whole bench. On the aft deck is a wet bar with sink, Scotsman refrigerator and Scotsman icemaker. There are two Maxwell 3500 dock line warping winches to assist with dock lines. A set of stairs goes down from the deck to the swim platform and there is a hydraulic passerelle. The passerelle is operational but has not been used on a regular basis. Walk around side decks are wide with the side rails high enough to give a secure feeling when moving from bow to stern. The fore deck has oversized electric anchor winches with capstan that can be used to handle the bow lines. The cleats are massive so any size dock lines can be used. A deck hatch allows access to the chain

locker that doubles as a storage area.

Machinery

The yacht is powered with twin MTU 396 engines with only around 2,950 hours since new. When this yacht was built with large engines and Waterjets the original intention was to run fast. However as the build progressed and more and more heavy weight equipment and oversized construction was specified, the high speeds were not attained. After much consideration, and years of experimentation, and especially with the rapidly increasing cost of fuel, it was decided that attaining 27 knots and using 300 gallons of fuel per hour was not desirable. Large Trac stabilizers were installed in 2006 to give the yacht a comfortable ride at displacement speeds burning 28 gallons an hour at 7-to 8 knots and a hull cruising speed of 10 knots. Since the yacht has been run at low loads on the engines, running at low RPM, the life expectancy of the engines is increased.

Since the yacht does not have large unprotected propellers below the bottom, using this yacht in the Bahamas or other areas with shallower waters become much more practical.

- MTU 16V 396 engines with 2,950 hours
- Alfa- Laval fuel centrifuge
- Fuel management system with A.C. and D.C. fuel transfer pumps
- Main engine water jacket heaters
- 208 volt air compressor with dual storage tanks
- 300 gallon day tank for fuel
- Lube oil change manifold with new and old transfer pumps
- New and old lube oil tanks
- Hydraulic take off on both main engines
- Frequency drive to ventilator
- Water tight doors fore and aft
- Air ventilators with flaps
- Sea chest located centerline
- Full engine instrumentation
- Alarm system monitor panel
- Trac 440 digital stabilizers with 29 square foot fins
- Three six ton reverse cycle Cruise Air conditioners, chilled water
- Toshiba frequency drives for Air conditioning

Electrical

- Northern Lights generators 208 volt three phase 40 kw 1200 rpm
- Port generator 10,600 hours

- Starboard generator 9,725
- Sentry battery chargers
- Two power invertors for basic electric without generators
- Shore power transformer for international electric
- Capac hull potentiometer
- Sealed cell gel batteries for engines

Owner's Notes

The owner of Silent Wings operated as the owner operator/ captain and lived on board for extended periods. Having this unique perspective he wrote the following comments: Silent Wings was a custom built yacht by Derektor Shipyards. Derektor is one of the world's premier yacht builders and recently launched the largest privately owned yacht ever built in the United States. When you own a Derektor you own something of a special build design and quality. Silent Wings is no exception. Her extensive quality and workmanship is evident from the moment you see her. Livability of Silent Wings Current owner/Captain, and his wife/First Mate, have enjoyed living aboard this vessel. Her wide beam makes for a spacious and comfortable living space. One very unique feature of the yacht is the expansive windows that open to allow one to experience their environment. This, combined with the large double aft doors create a 'wide open, next to nature' feel when docked or at anchor. The counter top in the hallway is a wonderful space to set up a buffet when entertaining. When cruising in a 'flotilla' with others, Silent Wings was the gathering place when anchored because of her roominess, various gathering places, and over all comfort. Sunning on the very large aft upper deck is made more comfortable by the special Sunbrella fabric that blocks much of the heat while still allowing for working on that summer tan. The beautiful seating area here is a wonderful place to entertain or be out for the day or evening. There is an equally roomy upper helm located adjacent to the aft deck, with seating for ten or more. Docking is made easy for two with the wide walk around decks that allowed the owner and his wife to operate the vessel by themselves with no need for crew. There is also no need to go through the main salon to set lines and bumpers or disturb guest as is often the case with other yachts of this size. Another unique feature of Silent Wings is her VIP because of its location, size, and ample storage space for your guest's belongings. The VIP is located on the main level, affording guests their own private space with a pocket door allowing for additional privacy by creating an en suite bath. The windows in this room also open so that guests can wake to the sights and sounds of beautiful waters at anchor, a unique vacation experience for your friends. The VIP is accessible with its own entry from the outer decks. The power room/day head also has its own entry from the outer decks. No need to come inside to utilize this area. The two seating areas in the salon allow for intimate conversations, or combined, a boisterous party. When you open up the double doors to the aft deck it now blends the inside with the outdoors and makes for excellent traffic flow for your party. The aft deck is spacious, with a refrigerator, ice maker and wet bar with granite counter top, stainless sink, and flat screen television. The twin teak tables with booth seating allow for dining, drinks, and throwing a Superbowl party while enjoying the beauty of an evening outdoors. Silent Wings' generators are designed to run unnoticed, so that you can enjoy all areas, including the aft deck

even when at anchor. The spiral English walnut stair case in the center of Silent Wings is an elegant focal point. It is a fine example of the quality of materials and craftsmanship that is evident throughout the vessel. Her sleek design gives Silent Wings the look of a small ship rather than just another large yacht. Silent Wings is rock solid at sea with the large stabilizers, beam and solid hull. The design and build of this ship makes her comfortable for everyone aboard. Come aboard Silent Wings and you will immediately see the difference in her build - quality workmanship that is custom in every respect.

Исключения

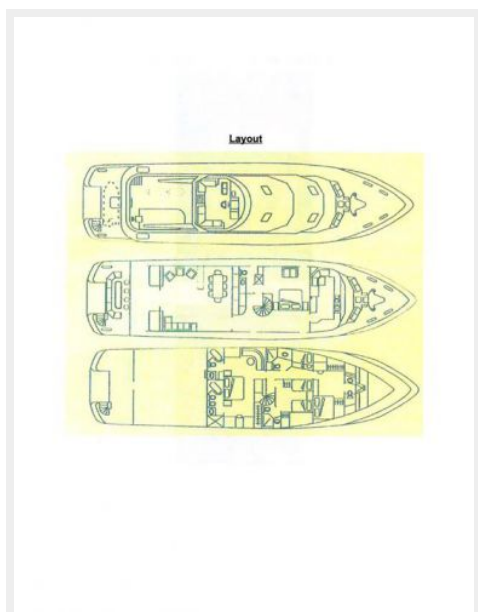
При продаже яхты исключаются личные вещи владельца.

Отказ от ответственности

Компания предоставляет описание судна или яхты добросовестно, но не может гарантировать точность этой информации, а также не ручается за техническое состояние. Покупатель должен проинструктировать своих агентов или оценщиков исследовать представленную информацию более подробно, по собственному желанию. Продажа судна или яхты, изменение цены или снятие с продажи будет происходить без предварительного уведомления.

ФОТОГРАФИИ

GA Plans



Salon



Salon



Salon



Salon



Salon



Galley



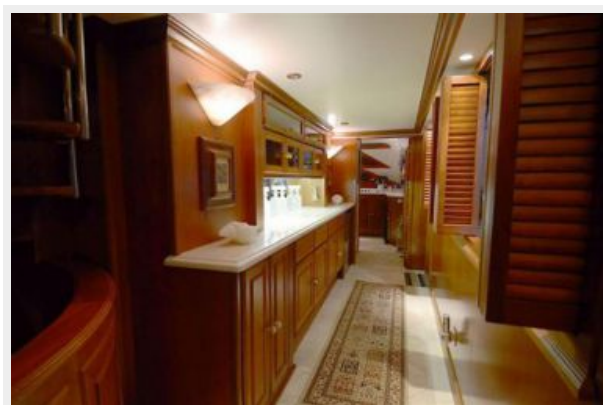
Galley



Galley



Hall Galley



Dinette



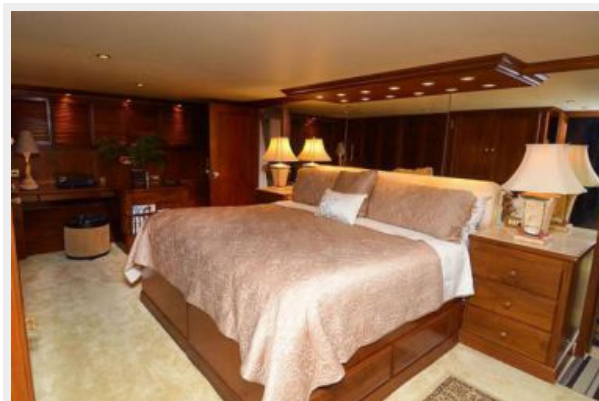
Dining



Dining



Master Stateroom



Master Stateroom



Master Stateroom



Master Bathroom



Master Stateroom



Master Bathroom



VIP Stateroom



VIP Stateroom



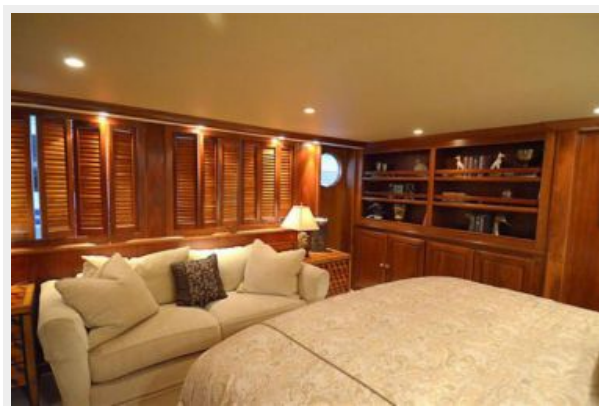
VIP Stateroom



VIP Stateroom



VIP Stateroom



VIP Bathroom



Guest Stateroom



Guest Stateroom



Guest Stateroom



Guest Stateroom



Guest Stateroom



Guest Bathroom



Washer



Dryer



Controls



Desk



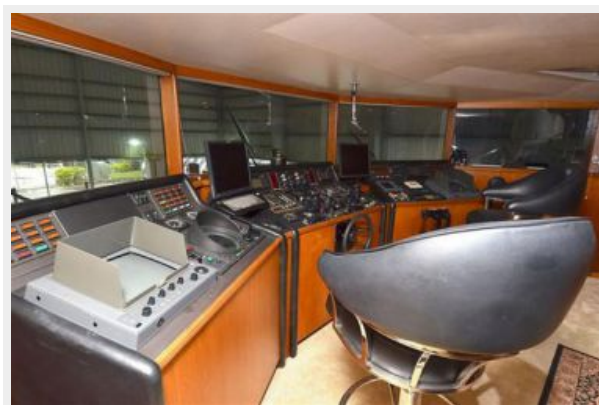
Office



Hall



Pilothouse



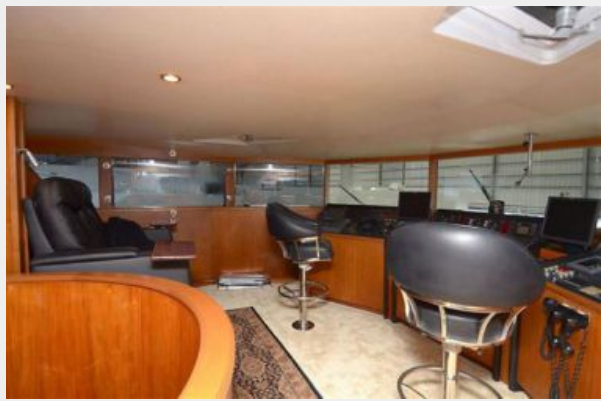
Office



Pilothouse



Pilothouse



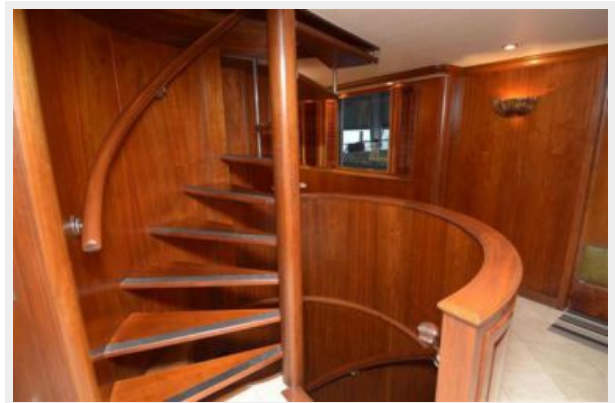
Pilothouse Recliner



Stairs



Stairs



Stairway



Aft Deck



Aft Deck



Flybridge



Flybridge



Flybridge Seating



Flybridge Seating



Jacuzzi



Engine Room



Engine Room



Engine Room



Engine Room



Engine Room



КОНТАКТЫ

Андрей Шестаков (Andrey Shestakov) – ведущий яхтенный брокер отдела продаж яхт и судов компании Shestakov Yacht Sales Inc. Официальный представитель Shestakov Yacht Sales Inc. для русскоговорящих клиентов в центральном офисе компании в Майами/Форт Лодердейл/Флорида/США.

Контактная информация

Email: andrey@shestakovyachtsales.com

Web: shestakovyachtsales.com

Телефоны

Краснодарский край: **+7(918)465-66-44**

США, Майами, Флорида: **+1(954)274-4435**

Время работы

Понедельник – Суббота: **9:00 - 21:00**
EDT

Воскресенье: **Закрито**

Адрес



Harbour Towne Marina, 850 NE 3rd St,
STE 213, Dania, FL 33004