

ZENNORA — FINYA



Builder: FINYA

Year Built: 1987

Model: Cruising Sailboat

Price: PRICE ON APPLICATION

Location: United States

LOA: 54' 0" (16.46m)

Beam: 15' 0" (4.57m)

Max Draft: 7' 0" (2.13m)

Our experienced yacht broker, Andrey Shestakov, will help you choose and buy a yacht that best suits your needs **Zennora — FINYA** from our catalogue. Presently, at Shestakov Yacht Sales Inc., we have a wide variety of yachts available on our sale's list. We also work in close contact with all the big yacht manufacturers from all over the world.

If you would like to buy a yacht **Zennora — FINYA** or would like help answering any questions concerning purchasing, selling or chartering a yacht, please call **+1(954)274-4435**

TABLE OF CONTENTS

TABLE OF CONTENTS	2
SPECIFICATIONS	5
Overview	5
Basic Information	5
Dimensions	5
Speed, Capacities and Weight	5
Accommodations	6
Hull and Deck Information	6
Engine Information	6
DETAILED INFORMATION	7
Accommodations	7
Galley	7
Electronics & Navigation	7
Electrical Equipment	8
Mechanical	8
Tanks & Plumbing	8
Hull & Deck	9
Sails & Rigging	9
Safety Gear	9
Other Features	10
Exclusions	10
Disclaimer	10
PHOTOS	11
PORT PROFILE	11
STARBOARD BOW QUARTER	11
UNDER SAIL	11
STERN VIEW	11
SAILS: MAIN MIZZEN & MIZ STAYSAIL	12

STARBOARD STERN QUARTER	12
PORT DECK LOOKING AFT	12
PORT DECK LOOKING FORWARD	12
COCKPIT	12
COMPANIONWAY	12
DECK LOOKING FORWARD	13
COCKPIT PORT VIEW	13
COCKPIT STARBOARD VIEW	13
STARBOARD DECK LOOKING AFT	13
DECK LOOKING AFT	13
AFT CABIN BERTH	13
AFT CABIN AND ENGINE ROOM ACCESS	14
AFT HEAD COMPARTMENT	14
NAV STATION STARBOARD	14
U SHAPED GALLEY- PORT	14
FOREPEAK/BOSUN'S LOCKER	15
FORWARD CABIN BERTHS	15
FORWARD HEAD COMPARTMENT	15
FORWARD CABIN/ACCESS TO FOREPEAK	15
PORT SIDE SALON SETTEE	16
SALON LOOKING AFT	16
SALON STARBOARD SIDE U-SHAPED DINETTE	16
SALON LOOKING FORWARD	16
PROFILE DRAWING & UNDERBODY	16
INTERIOR LAYOUT DRAWING	16
CONTACTS	17
Contact details	17
Telephones	17
Office hours	17

Address

17

SPECIFICATIONS

Overview

NOTE: PRICE REDUCTION TO \$159,500.00 AND OFFERS ENCOURAGED!!!

ZENNORA is an ocean-going yacht built to a very high standard by the Mao Ta Yacht Company in 1987 and commissioned in 1989. Easily handled by two people at sea and in the marina. She is fast and well balanced at sea and has proven sea keeping ability. ZENNORA has a modified fin keel/skeg rudder, excellent ventilation through numerous deck hatches and two SS Cowl vents with dorade boxes and SS guards, a large, deep cockpit with very comfortable seating. Her beautiful interior joinery is varnished teak with a varnished teak and holly cabin sole throughout. Combined with excellent sailing performance, easily handled ketch rig, spacious interior and quality, ZENNORA is an excellent choice for one looking for a "go anywhere" blue water cruise that is available at a very attractive price.

ZENNORA IS BEING OFFERED FOR SALE AS THE OWNER'S CRUISING PLANS HAVE CHANGED AND THEY WOULD LIKE TO DOWNSIZE.

Basic Information

Category: Cruising Sailboat

Model Year: 1987

Year Built: 1987

Country: United States

Dimensions

LOA: 54' 0" (16.46m)

LWL: 43' 0" (13.11m)

Beam: 15' 0" (4.57m)

Max Draft: 7' 0" (2.13m)

Speed, Capacities and Weight

Displacement: 40000 Pounds

Water Capacity: 140 Gallons

Holding Tank: 2 Gallons

Fuel Capacity: 100 Gallons

Accommodations

Total Cabins: 2

Total Heads: 2

Hull and Deck Information

Hull Material: Fiberglass

Engine Information

Engines: 1

Manufacturer: Perkins

Model: 4-236

Engine Type: Inboard

Fuel Type: Diesel

DETAILED INFORMATION

Accommodations

From the companionway moving all the way forward there is a large storage area/work space/bosun's locker. Next aft is the forward head w/shower, then the forward stateroom with a lower pullman double berth and single berth upper to stbd. To port is a full length desk with swing out seat, storage cabinets and bookshelves. The open main salon has a very large semi circular dinette to starboard and a full length curved settee to port. Cabinets fore and aft with book shelves between port and starboard. The spacious U-shaped galley is aft to port with excellent counter top space and galley storage. Opposite to port is forward facing nav station with built-in electronics, electrics panel and a very large navigation desk. The owner's stateroom has a large pullman double berth to port, ensuite head compartment with separate shower stall. Insulated access door to the engine/generator room to stbd with excellent storage.

- AM/FM/CD Stereo w/Interior and Cockpit Speakers

Galley

Spacious U-Shaped Galley with Foam Green Corian Counter Tops-New 2000 Excellent galley stowage and counter top space

- Force 10 Three Burner Propane Stove w/Oven
- Two 10# Alum Propane Bottles
- Safety Solenoid
- Front Loading Fzr w/ Separate Top Loading Ref Compartments w/12V Isotherm Ref/Fzr System-New 2009
- Temperature Guages-Ref & Fzr
- Recessed Double SS Sinks
- Press H&C Water
- Manual Foot Pump Fresh and Sea Water spigots
- Water Filtration System w/Spare Filters

Electronics & Navigation

- Nav Station:
- Furuno 1835 24 Mile Radar-New 2012
- Icom 718 Ham SSB-New 2004
- Furuno GPS-New 2000
- Furuno Weather Fax
- Cockpit:
- Raymarine E-80 GPS/Chart Plotter
- Icom handheld VHF
- Raymarine Auto Pilot Remote

- Icom VHF
- Raymarine 6000 w/Remote-New 2000 and Robertson HDL 200 RAM-New 2004
- Raymarine Instruments:
- Speed/Log
- Depth
- Wind Speed/AWI

Electrical Equipment

120V/30 Amp shore power service and phone/cable TV connection. Extensive rewiring w/New Electric Panel-2000

- 3.5KW Kubota Generator w/1283 hrs-New 2003
- Charging System:
- Heart Inverter/Charger-New 2000
- Engine Alternator
- Spare Alternator
- Batteries:
- House-Two 4D-New 2011 Four 6V Golf Cart in series-New 2011
- Eng/Gen-One-New 2012
- Windlass-New 2011

Mechanical

Perkins 4-236 Diesel w/2763 hrs.

- Engine Motor Mounts-New 1999
- Three Blade Max Prop
- Transmission and V-Drive Seals-Renewed 1999
- Exhaust System-New 2006
- Spare Water Pumps-Engine/Gen Raw Water, Press Water, Bilge, Etc.

Tanks & Plumbing

- SS Water Heater-New 2001
- Water: Approx 140 Gallons
- Main Tank SS-New 2000
- Five Fiber Glass Tanks (All Gravity fed to the Main Tank)-New 2000
- Engine and Generator Seacocks-New 2003
- Groco Toilets (w/Repair Kits) Both Heads-New 2003
- Fuel: Approx 100 Gallons
- Three Tanks of Varing Sizes
- Holding:
- Two 10 Gallon SS Tanks w/Deck Pump-Out

Hull & Deck

Aft Cockpit with easy access to the companionway and deck.

- Ground Tackle:
- Lofrans Elect. Windlass-New 2011
- 40KG Rocna Anchor on Bow Roller w/300' of Chain
- 40# Bruce Anchor on Bow Roller w/10' Chain & 300' Nylon Rode
- Fortress Anchor w/10' Chain & 300' Nylon Rode
- Canvas:
- Dodger and Bimini Top w/enclosure-New 2010
- Two Deck Hatch Dodgers-New 2010
- Cockpit Cushions-New 2004

Sails & Rigging

Ketch Rig with Keel Stepped Main and Deck Stepped Mizzen. ALL CHAIN PLATES-NEW 2003. INSULATED BACKSTAY AND TURNBUCKLE-NEW 2003

- Harken RF Furling
- Harken Batcar System for Main and Mizzen
- Harken Batcar Main Track System
- Selden Mizzen Sail Track System
- Harken Main and Mizzen Traveller
- Spinnaker Pole
- Barent Winches:
- Two ST2SP Primaries
- Two ST2SP Secondaries
- Two ST2SP Main Sheet
- Two ST2SP Miz Hal & Miz Sheet
- Four ST2SP Halyard
- One ST2SP Main Reef/Outhaul
- Sails:
- 115% RF Genoa-Doyle-New 2003
- Main-Doyle Full Battened w/3 Reefs-New 2003
- Mzen-Doyle Full Battened-New 2012
- Other Sails:
- Spinnaker-Good Condition
- Mizzen Staysail-Good Condition
- Staysail (Storm)-Good Condition

Safety Gear

- Six Man Avon Life Raft-New 2008(Due for Inspection)
- One Life Raft Survival Kit

Safety Harnesses

- "Jack Lines" Fore/Aft, Port/Stbd

Other Features

- Ships Clock and Barometer
- 15HP Yamaha Outboard Motor-New 2012
- Avon 8' RIB-New 2007
- Hull, Deck and Cockpit-New Awlgrip White-2011
- Bottom Job-2012

Exclusions

Owner's personal belongings.

Disclaimer

The Company offers the details of this vessel or yacht in good faith but cannot guarantee or warrant the accuracy of this information nor warrant the condition of the vessel. A buyer should instruct his representatives, agents, or his surveyors, to investigate such details as the buyer desires validated. This vessel or yacht is offered subject to prior sale, price change, or withdrawal without notice.

PHOTOS

PORT PROFILE



STARBOARD BOW QUARTER



UNDER SAIL

STERN VIEW



SAILS: MAIN MIZZEN & MIZ STAYSAIL



STARBOARD STERN QUARTER



PORT DECK LOOKING AFT



PORT DECK LOOKING FORWARD



COCKPIT



COMPANIONWAY



DECK LOOKING FORWARD



COCKPIT PORT VIEW



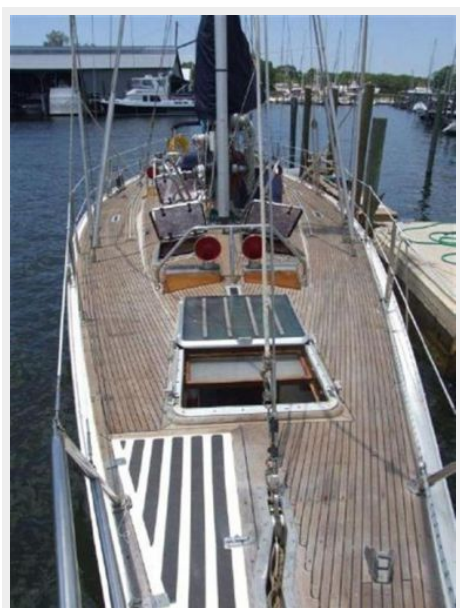
COCKPIT STARBOARD VIEW



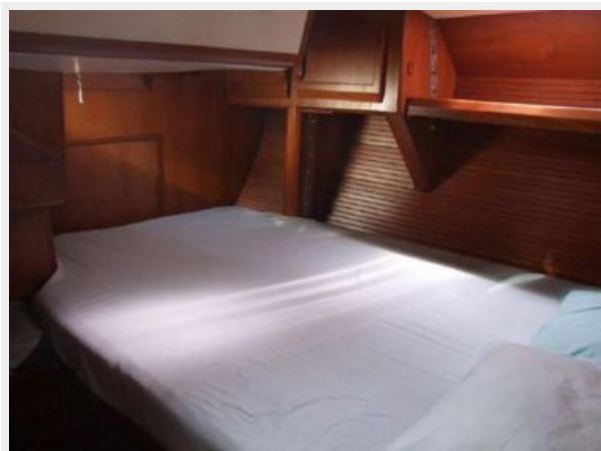
STARBOARD DECK LOOKING AFT



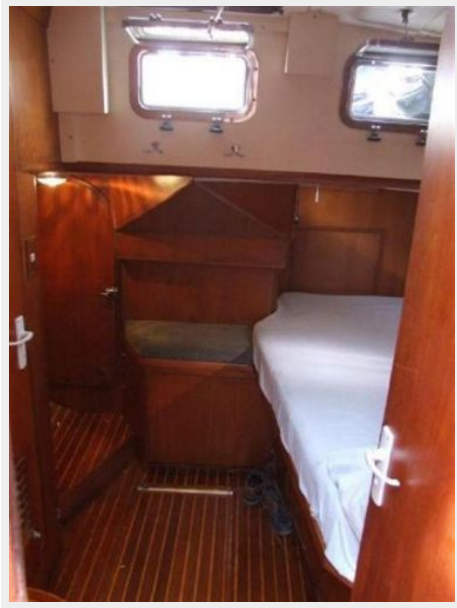
DECK LOOKING AFT



AFT CABIN BERTH



AFT CABIN AND ENGINE ROOM ACCESS



AFT HEAD COMPARTMENT



NAV STATION STARBOARD



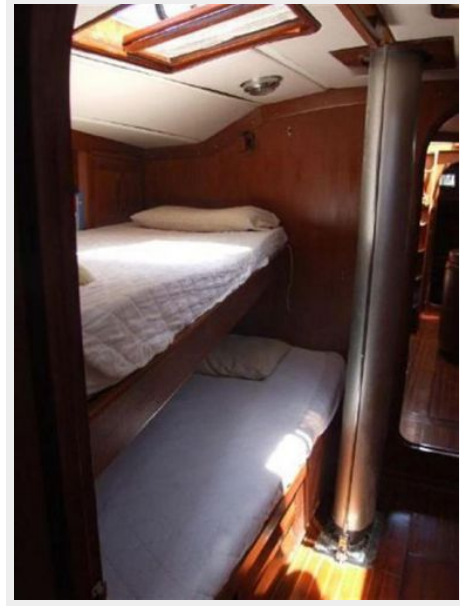
U SHAPED GALLEY- PORT



FOREPEAK/BOSUN'S LOCKER



FORWARD CABIN BERTHS



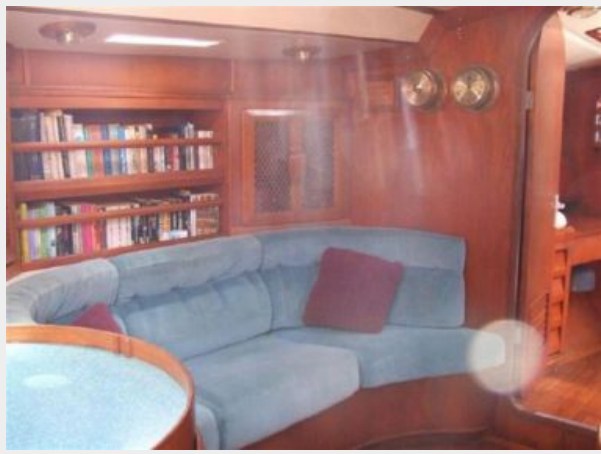
FORWARD HEAD COMPARTMENT



FORWARD CABIN/ACCESS TO FOREPEAK



PORT SIDE SALON SETTEE



SALON LOOKING AFT



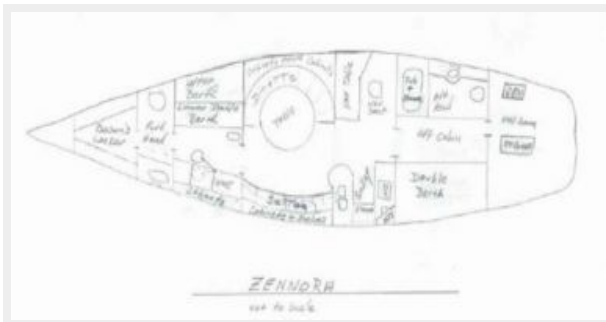
SALON STARBOARD SIDE U-SHAPED DINETTE



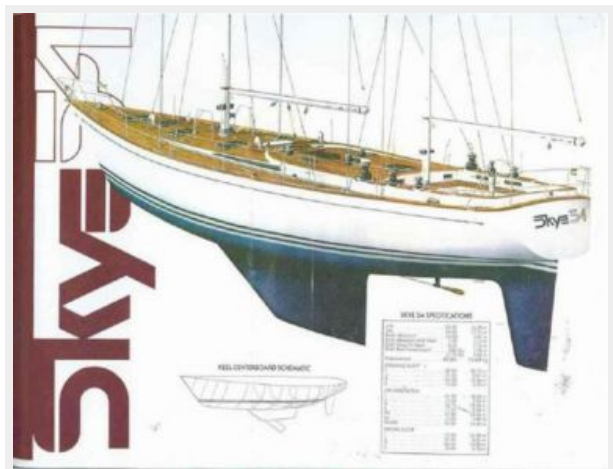
SALON LOOKING FORWARD



INTERIOR LAYOUT DRAWING



PROFILE DRAWING & UNDERBODY



CONTACTS

Andrey Shestakov, leading yacht broker of the sales department of Shestakov Yacht Sales Inc. Shestakov Yacht Sales Inc., the official representative of the Miami/Fort Lauderdale FL headquarters.

Contact details

Email: andrey@shestakovyachtsales.com

Web: shestakovyachtsales.com/en/

Telephones

USA: +1(954)274-4435

Office hours

Monday – Saturday: **9:00 - 21:00** EDT

Sunday: **closed**

Address



Harbour Towne Marina, 850 NE 3rd St,
STE 213, Dania, FL 33004