

## OYA — NOVATEC



**Builder:** NOVATEC

**Year Built:** 2008

**Model:** High Performance

**Price:** PRICE ON APPLICATION

**Location:** China

**LOA:** 58' 0" (17.68m)

**Beam:** 15' 0" (4.57m)

**Max Draft:** 3' 11" (1.19m)

**Cruise Speed:** 18 Kts. (21 MPH)

Our experienced yacht broker, Andrey Shestakov, will help you choose and buy a yacht that best suits your needs OYA — NOVATEC from our catalogue. Presently, at Shestakov Yacht Sales Inc., we have a wide variety of yachts available on our sale's list. We also work in close contact with all the big yacht manufacturers from all over the world.

If you would like to buy a yacht OYA — NOVATEC or would like help answering any questions concerning purchasing, selling or chartering a yacht, please call +1(954)274-4435

---

# TABLE OF CONTENTS

---

TABLE OF CONTENTS	2
SPECIFICATIONS	3
Overview	3
Basic Information	3
Dimensions	3
Speed, Capacities and Weight	3
Accommodations	4
Hull and Deck Information	4
Engine Information	4
DETAILED INFORMATION	5
Introduction & Yacht Description	5
Accommodations	5
Audio & Visual Equipment	5
Engineering	5
Galley	5
Deck Equipment	6
Other	6
Exclusions	6
Disclaimer	6
PHOTOS	7
CONTACTS	12
Contact details	12
Telephones	12
Office hours	12
Address	12

---

# SPECIFICATIONS

---

## Overview

---

Ranked as one of the top manufacturers in Taiwan, Nova Marine Co. Ltd has been building quality, high performance yachts since 1983. The Novatec 58 Euro Motor Yacht is built on a high-performance deep-V planing hull and provides exceptional handling and performance. The interior appointments are lavished with high-gloss lacquered woodwork and light fabrics to provide a light and contemporary essence. This Novatec 58 features a unique custom designed layout by it's owner where the master stateroom has been fitted forward in the spacious V-berth to allow for the aft layout to host the galley and dinette seating area with large day head and walk-in shower. This design allows for a larger main salon and driving helm area and aft, guests can come from the swim platform straight to the day head and shower. The dinette also converts to a single berth ideal for a Captain/crew or a guest. This Novatec is in very good condition with full time Captain/boat boy and up to date service records. Turn key and ready to go, this fully spec'd motor yacht is perfect for coastal cruising and long weekends away.

## Basic Information

---

**Category:** High Performance

**Model Year:** 2008

**Year Built:** 2008

**Country:** China

**Vessel Top:** 2353

**Fly Bridge:** Yes

## Dimensions

---

**LOA:** 58' 0" (17.68m)

**Beam:** 15' 0" (4.57m)

**Max Draft:** 3' 11" (1.19m)

## Speed, Capacities and Weight

---

**Cruise Speed:** 18 Kts. (21 MPH)

**Displacement:** 52800 Pounds

**Water Capacity:** 140 Gallons

**Fuel Capacity:** 600 Gallons

---

## Accommodations

---

**Total Cabins:** 2

**Sleeps:** 5

**Total Heads:** 2

---

## Hull and Deck Information

---

**Hull Material:** FRP

**Hull Color:** White

**Hull Finish:** Stainless Steel

---

## Engine Information

---

**Engines:** 2

**Manufacturer:** Cummins

**Model:** QSC8.3

**Engine Type:** Inboard

**Fuel Type:** Diesel

---

# DETAILED INFORMATION

---

## Introduction & Yacht Description

---

Ranked as one of the top manufacturers in Taiwan, Nova Marine Co. Ltd has been building quality, high performance yachts since 1983. The Novatec 58 Euro Motor Yacht is built on a high-performance deep-V planing hull and provides exceptional handling and performance. The interior appointments are lavished with high-gloss lacquered woodwork and light fabrics to provide a light and contemporary essence. This Novatec 58 features a unique custom designed layout by it's owner where the master stateroom has been fitted forward in the spacious V-berth to allow for the aft layout to host the galley and dinette seating area with large day head and walk-in shower. This design allows for a larger main salon and driving helm area and aft, guests can come from the swim platform straight to the day head and shower. The dinette also converts to a single berth ideal for a Captain/crew or a guest. This Novatec is in very good condition with full time Captain/boat boy and up to date service records. Turn key and ready to go, this fully spec'd motor yacht is perfect for coastal cruising and long weekends away.

## Accommodations

---

1 x Master double with ensuite head and shower 1 x Guest twin singles with ensuite head and shower Extra single on convertible dinette sofa in aft cabin next to galley

## Audio & Visual Equipment

---

AM/FM/CD player with two speakers 12v Pioneer stereo/DVD player Bose outdoor speakers Bravia 32" LCD TV -main salon Sony 18" LCDTV- master bedroom

## Engineering

---

Twin Cummins QSC8.3 540Hp diesels Aluminium Ni-Bronze propeller x2 (NIBRAL) -4 blade Onan Genset 17kw 60HZ with soundshield - Upgrade, 500 hours Dual Racor primary fuel filters Heavy duty batteries: 5 sets: 2 x 200amp for engine start, 2 x 200amp for house, 1 x 100 amp for gen set 50 amp battery charger Pressure fresh water system, high capacity 4.5 Gal per minute - FLOJET 2840 -100A Bilge pumps, auto x 3, manual x 1 Water heater 20Gal Glendinning cable master 70' (50amp) Oil change system for engine and genset Electronic control system in lieu of hydraulic Automatic fire suppression system with engine shut down (MA2-700)

## Galley

---

4 plate convection stove top Whirlpool convection oven and microwave Norcold fridge/freezer Smartech grill

---

## Deck Equipment

---

Bow thruster, 6Hp, upgraded option Sundeck with FRP L-shaped settee, upgraded option Teak swim platform, upgraded option FRP radar arch Hot & cold shower at transom Shore power inlet 50 amp 240V and TV/phone cable inlet at transom

---

## Other

---

Air conditioning, Vimar reverse cycle, hot and cold, 16k x 2, 12k x 1 Speedboat included - Techmate 24ft with 250hp Mercury outboard

---

## Exclusions

---

Owner's personal belongings.

---

## Disclaimer

---

The Company offers the details of this vessel or yacht in good faith but cannot guarantee or warrant the accuracy of this information nor warrant the condition of the vessel. A buyer should instruct his representatives, agents, or his surveyors, to investigate such details as the buyer desires validated. This vessel or yacht is offered subject to prior sale, price change, or withdrawal without notice.

# PHOTOS





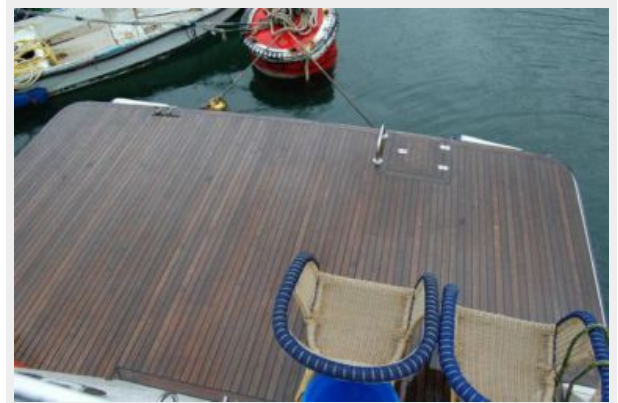












# CONTACTS

---

Andrey Shestakov, leading yacht broker of the sales department of Shestakov Yacht Sales Inc. Shestakov Yacht Sales Inc., the official representative of the Miami/Fort Lauderdale FL headquarters.

## Contact details

---

Email: [andrey@shestakovyachtsales.com](mailto:andrey@shestakovyachtsales.com)

Web: [shestakovyachtsales.com/en/](http://shestakovyachtsales.com/en/)

## Telephones

---

USA: +1(954)274-4435

## Office hours

---

Monday – Saturday: **9:00 - 21:00** EDT

Sunday: **closed**

## Address

---



Harbour Towne Marina, 850 NE 3rd St,  
STE 213, Dania, FL 33004