

## GLOBE TROTTER — ATLANTIC



**Builder:** ATLANTIC

**Year Built:** 2007

**Model:** Trawler

**Price:** PRICE ON APPLICATION

**Location:** Turkey

**LOA:** 66' 0" (20.12m)

**Beam:** 18' 3" (5.56m)

**Max Draft:** 6' 7" (2.01m)

**Cruise Speed:** 10 Kts. (12 MPH)

**Max Speed:** 11 Kts. (13 MPH)

Our experienced yacht broker, Andrey Shestakov, will help you choose and buy a yacht that best suits your needs **Globe Trotter — ATLANTIC** from our catalogue. Presently, at Shestakov Yacht Sales Inc., we have a wide variety of yachts available on our sale's list. We also work in close contact with all the big yacht manufacturers from all over the world.

If you would like to buy a yacht **Globe Trotter — ATLANTIC** or would like help answering any questions concerning purchasing, selling or chartering a yacht, please call **+1(954)274-4435**

---

# TABLE OF CONTENTS

---

TABLE OF CONTENTS	2
SPECIFICATIONS	4
Overview	4
Basic Information	4
Dimensions	4
Speed, Capacities and Weight	4
Accommodations	5
Hull and Deck Information	5
Engine Information	5
DETAILED INFORMATION	6
Main Deck	6
Master Stateroom	6
Guest Stateroom 1	6
Guest Stateroom 2	6
Salon	6
Galley	7
Pilothouse	7
Engine Room	7
Hall	7
Hull	7
Electrical Equipment	8
Exclusions	8
Disclaimer	8
PHOTOS	9
Pilothouse	9
Galley	9
Aft	9
Master	9

---

Swim Platform	10
Foredeck	10
Foredeck 2	10
Engine Room	10
Engine Room 2	10
Salon	10
Dining	11
Salon 2	11
Hall	11
Master Shower	11
Guest Stateroom	12
Layout 1	12
Layout 2	12
Haulout Sept 2013	12
Haulout Sept 2013	13
Haulout Sept 2013	13
<b>CONTACTS</b>	<b>14</b>
Contact details	14
Telephones	14
Office hours	14
Address	14

---

# SPECIFICATIONS

---

## Overview

---

Price Reduction! This fine bluewater luxury yacht has just had a price reduction of \$120,000 Euros. Motivated owner os looking for offers on this "must see" yacht! New bottom paint and full servicing of vessel September 2013.

## Basic Information

---

**Category:** Trawler

**Sub Category:** Displacement

**Model Year:** 2007

**Year Built:** 2007

**Country:** Turkey

## Dimensions

---

**LOA:** 66' 0" (20.12m)

**LWL:** 58' 0" (17.68m)

**LOD:** 62' 0" (18.90m)

**Beam:** 18' 3" (5.56m)

**Max Draft:** 6' 7" (2.01m)

## Speed, Capacities and Weight

---

**Cruise Speed:** 10 Kts. (12 MPH)

**Cruise Speed RPM:** 1550 Kts.

**Max Speed:** 11 Kts. (13 MPH)

**Max Speed RPM:** 1850 Kts.

**Displacement:** 4409.24524 Pounds

**Water Capacity:** 530 Gallons

**Holding Tank:** 211 Gallons

**Fuel Capacity:** 2774 Gallons

**Fuel Consumption:** 12 Gallons

---

## Accommodations

---

**Total Cabins:** 3

**Total Berths:** 5

**Sleeps:** 6

**Total Heads:** 3

**Crew Cabin:** 1

**Crew Berths:** 2

**Crew Sleeps:** 2

**Crew Heads:** 1

---

## Hull and Deck Information

---

**Hull Material:** Steel

**Deck Material:** Steel

**Hull Configuration:** Full Displacement

**Hull Color:** Blue

---

## Engine Information

---

**Engines:** 2

**Manufacturer:** Cummins

**Model:** 6CTA8.3M

**Engine Type:** Inboard

**Fuel Type:** Diesel

---

## DETAILED INFORMATION

---

### Main Deck

---

Ship type of anchors each 140kg(300lbs), size #14 galvanized chains of each 140mts(450'), total weight of each set of anchor and chains is 720kg(1500lbs). (2) Brass bits (aft deck) (2) Retractable hydraulic capstans (aft deck) Pilot station (aft deck) Teak dining table with six chairs (aft deck) Teak chest for deck lines (aft deck) Telescopic gangway with control panel (aft deck) Hydraulic folding swim platform with control panel (aft deck) (2) 140kg anchors (4) 25m mooring lines (2) 140m anchor chain, 14 mm. Trawler mast and boom for rigid dinghy (aluminum: wood effect paint, lifting mechanism, easy to operate, manual included, 2-speed Lewmar winches) 10 Hydraulic extended gangway 6'6 x 3'6 Hydraulic driven hinges swimming platform with step ladders

### Master Stateroom

---

Queen size bed Raymarine multi-repeater, to monitor depth/wind/speed Yamaha AM/FM/CD player (wiring for further A/V) Brass port holes Skylight/emergency escape hatch Cupboards and ample storage A/C control panel Decorated in Burmese teak, satin finish throughout Ensuite bath with: Head Shower Marble surfaces

### Guest Stateroom 1

---

(2) Single beds with storage beneath Wiring for A/V equipment Brass port holes A/C Control panel Cupboards and storage Decorated in Burmese teak, satin finish throughout Ensuite head with enclosed glass shower stall, marble surfaces Yamaha AM/FM/CD player

### Guest Stateroom 2

---

(2) Single beds with storage beneath Wiring for A/V equipment Brass port holes A/C Control panel Cupboards and storage Decorated in Burmese teak, satin finish throughout Ensuite head with enclosed glass shower stall, marble surfaces Yamaha AM/FM/CD player

### Salon

---

32 LG LCD plasma TV Yamaha AM/FM/CD player Burmese teak dining table with seating for eight (2) Off white leather sofas (5) Wood and leather chairs Twin marble topped Burmese wooden bars with bar stools which act as a divider for the galley space (2) Leather stall chairs Coffee tables Decorated in Burmese teak, satin finish throughout

---

## Galley

---

Whirlpool refrigerator/freezer Whirlpool microwave/oven Whirlpool dishwasher (2) Whirlpool electric cook tops (2) Whirlpool gas cook tops Whirlpool extractor fan Marble surfaces Corian stainless steel sink with hot/cold water

---

## Pilothouse

---

Raymarine E120 chartplotter Raymarine 54E DSC VHF Raymarine C120 radar/depth sounder Raymarine ST8002 autopilot Raymarine ST60+ depth sounder Raymarine ST60+ wind speed/direction indicator Analog liquid level indicators Search light A/C unit control panel Electrical control panel Engine controls Pilot seat, leather sofa

---

## Engine Room

---

Twin x 255/hp Diesels IB; Hrs: 440 2007 Cummins 6CTA8.3M.

Data/Sleipner hydraulic/electric bow thruster Wesmar stabilizers with 9 sq. ft. fins Idromar 180L per hour water maker MarineAir air conditioning, reverse cycle (3) Gianceschi and Ramaciotti extractor fans Stainless steel 80L boiler for hot water 220V G&R seawater pump/fire pump 24V G&R seawater pump/fire pump 24V G&R freshwater pump 24V Fuel transfer pump

---

## Hall

---

Whirlpool washing machine in cupboard between master and twin cabins Dryer as separate unit

---

## Hull

---

New bottom paint September 2013 with flouro polymer antifouling. International Paints claims this should be good for 5 - 7 years with maintenance only needed for bottom cleaning, zinc replacement, and prop greasing. All cutlass bearings and shaft seals were replaced at this haul-out. **Construction:** Steel hull, aluminum superstructure, teak decks. Four watertight compartments. Double bottom tanks. Bulbous bow for smooth ride and fuel efficiency. Anyone who spends much time around large ships has noticed the bulb shaped protrusions that are common on bows of large ships. To understand the purpose of the bulbous bow, we have to briefly review the characteristics of a displacement hull as it moves through the water. Displacement hulls push water aside as they move. The water that is pushed aside forms a wave that begins near the bow. The length of this wave is proportional to the speed of the hull through the water the faster the hull moves, the longer the bow wave. At some speed, the length of the bow wave increases to the point that it matches the length of the hull, and the hull operates in the trough of the wave, with a peak near the bow and another peak near the stern. This speed is called the hull speed and it is approximately 1.34 times the square root of the waterline length of

the hull. The purpose of the bulbous bow is to change the nature of this bow wave to reduce the drag it induces on the hull. The bulbous bow creates its own wave that is farther forward and out of phase with the natural bow wave created by the hull, effectively subtracting the normal bow wave and reducing its drag-inducing effect. The ATLANTIC 66 was not designed as a near shore cruiser that could run at 15 knots when needed. She has a full displacement hull designed for only one thing, 9 knot displacement speeds at maximum comfort and range in blue water situations. Serious blue water yachtsmen consider (Voyaging Under Power) by Captain Robert Beebe their cruising bible. In his book three of the main calculations for the ideal cruising yacht are; D/L Ratio is the ratio of the displacement of the vessel to its length. Beebe recommends a ratio of at least 270 for a 50' Ocean capable vessel. The ATR 66 has a ratio of 398. A/B Ratio measures the ratio of the side view of the vessel above the waterline to the side view area below the waterline. Beebe recommends a ratio of 2.6 or below. The ATR 66 has a ratio of 2.05.

---

## Electrical Equipment

---

Onan 22.5 kW generator 24/240/380V 3-phase (2) 24V 80 ah battery chargers 24V/220V 3 kW inverter (8) 12V 800 ah service batteries (2) 12V 200 ah gel navigation & emergency batteries (2) 12V 200 ah engine starting batteries (2) 12V 30 ah generator starting battery AC control panel electrical control panel Micro Commander engine control unit

---

## Exclusions

---

Owner's personal belongings.

---

## Disclaimer

---

The Company offers the details of this vessel or yacht in good faith but cannot guarantee or warrant the accuracy of this information nor warrant the condition of the vessel. A buyer should instruct his representatives, agents, or his surveyors, to investigate such details as the buyer desires validated. This vessel or yacht is offered subject to prior sale, price change, or withdrawal without notice.



# PHOTOS

**Pilothouse**



**Galley**



**Master**



**Aft**



**Swim Platform**



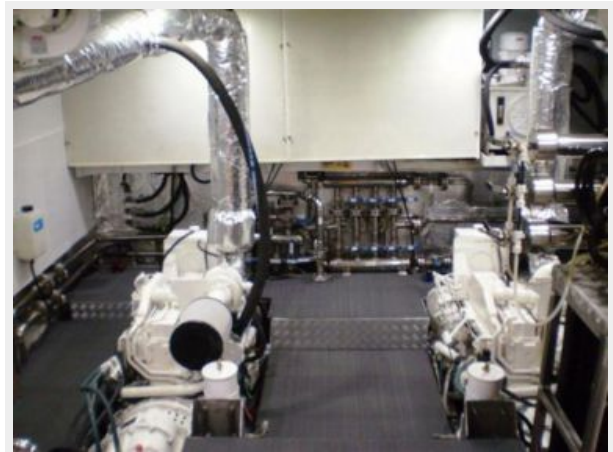
**Foredeck**



**Foredeck 2**



**Engine Room**



**Engine Room 2**



**Salon**



**Salon 2**



**Dining**



**Hall**



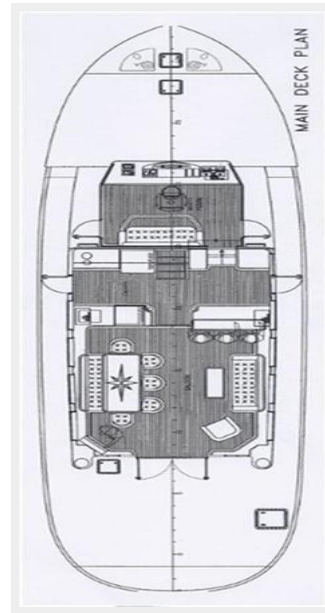
**Master Shower**



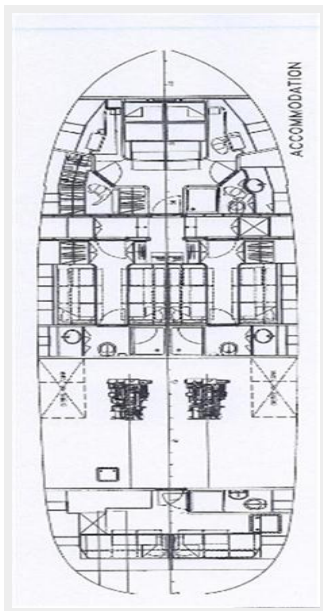
### Guest Stateroom



### Layout 1



### Layout 2



### Haulout Sept 2013



Haulout Sept 2013



Haulout Sept 2013



---

# CONTACTS

---

Andrey Shestakov, leading yacht broker of the sales department of Shestakov Yacht Sales Inc. Shestakov Yacht Sales Inc., the official representative of the Miami/Fort Lauderdale FL headquarters.

---

## Contact details

---

Email: [andrey@shestakovyachtsales.com](mailto:andrey@shestakovyachtsales.com)

Web: [shestakovyachtsales.com/en/](http://shestakovyachtsales.com/en/)

---

## Telephones

---

USA: +1(954)274-4435

---

## Office hours

---

Monday – Saturday: **9:00 - 21:00** EDT

Sunday: **closed**

---

## Address

---



Harbour Towne Marina, 850 NE 3rd St,  
STE 213, Dania, FL 33004