

BITE ME — SPORTCRAFT BOATS



Builder: SPORTCRAFT BOATS

Year Built: 2001

Model: Sport Fisherman

Price: PRICE ON APPLICATION

Location: United States

LOA: 31' 3" (9.53m)

Beam: 11' 0" (3.35m)

Cruise Speed: 23 Kts. (26 MPH)

Max Speed: 32 Kts. (37 MPH)

Our experienced yacht broker, Andrey Shestakov, will help you choose and buy a yacht that best suits your needs **Bite Me — SPORTCRAFT BOATS** from our catalogue. Presently, at Shestakov Yacht Sales Inc., we have a wide variety of yachts available on our sale's list. We also work in close contact with all the big yacht manufacturers from all over the world.

If you would like to buy a yacht **Bite Me — SPORTCRAFT BOATS** or would like help answering any questions concerning purchasing, selling or chartering a yacht, please call **+1(954)274-4435**

TABLE OF CONTENTS

TABLE OF CONTENTS	2
SPECIFICATIONS	3
Overview	3
Basic Information	4
Dimensions	4
Speed, Capacities and Weight	4
Hull and Deck Information	4
Engine Information	4
DETAILED INFORMATION	5
2001 Sport-Craft 3010 Express	5
Exclusions	5
Disclaimer	5
PHOTOS	6
CONTACTS	22
Contact details	22
Telephones	22
Office hours	22
Address	22

SPECIFICATIONS

Overview

PRICE JUST REDUCED - MUST SELL CHECK OUT THE VIDEO TO SEE WHY THIS NEEDS TO BE YOUR NEXT BOAT! BRAND NEW 10,000 BTU MARINE AIR CONDITIONING/HEAT/DEHUMIDIFY UNIT INSTALLED 2014!!!

Boat has been well maintained and shrink wrapped every winter.

Hard top with full enclosure. L.O.A. 31' 3", beam 11', fuel capacity 253 gal., dry weight 10,500 lbs., freshwater capacity 40 gal., 30 gal. holding tank. Powered by twin 300 HP fresh-water cooled Mercury Cruiser 350 Mag Horizon gas engines. Cruise 23 knots. Maximum 32 knots. Repowered starboard engine 2007 and port engine 2010.

Electronics include: Morse Electronic Control System with engine sync, Garmin 2010C color Chart Plotter/Fish Finder with 10" screen, BlueChart Mid Atlantic (incl. Canyons) Bathymetric Maps, Sitex Auto Pilot, Raymarine Pathfinder SL70 24nm range Radar, Flo Scan GPH Fuel Meter, Horizon VFH radio. Backup electronics include Furuno 1850FT Chartplotter/Fish Finder and Uniden VFH radio.

Safety features include Rapid Fix 406 Epirb, Switlik hard-case, 4-person Rescue pod with cradle, Fireboy Automatic Fire Extinguisher System, Fireboy Gas Fume Detector, Safe-T-Alert Carbon Monoxide Alarm.

Fishing features include Lee 19' outriggers, 10 rod rocket launchers, custom bait prep center with six drawer tackle box, custom 40 gal. livewell, raw water and fresh water washdown, marlin door, large insulated fishbox, recessed rod storage, spreader lights, windlass, teaser reels, SeaSpension pedestal seat mounts.

Accommodations include complete galley – microwave, sink, stove and refrigerator, Corian style countertops, convertible dinette, custom wood cabinetry, 12 volt/110v distribution center, 12volt power plug, private head with shower and electric toilet, macerator, forward double berth, indirect lighting, Blackmore AM/FM/CD/MP3 player with 5 Sony speakers, Aquamat carpeting, and lots of storage space. **Contact Steve Trattner 410-251-1817 cell.**

Basic Information

Category: Sport Fisherman

Model Year: 2001

Year Built: 2001

Refit Year: 2010

Refit Type: engine

Country: United States

Dimensions

LOA: 31' 3" (9.53m)

Beam: 11' 0" (3.35m)

Speed, Capacities and Weight

Cruise Speed: 23 Kts. (26 MPH)

Max Speed: 32 Kts. (37 MPH)

Displacement: 10500 Pounds

Water Capacity: 40 Gallons

Holding Tank: 30 Gallons

Fuel Capacity: 253 Gallons

Hull and Deck Information

Hull Material: Fiberglass

Engine Information

Engines: 2

Manufacturer: Mercruiser

Model: 350 Mag Horizon

Engine Type: I/O

Fuel Type: Gas

DETAILED INFORMATION

2001 Sport-Craft 3010 Express

Boat has been well maintained and shrink wrapped every winter. Hard top with full enclosure. L.O.A. 31' 3", beam 11', fuel capacity 253 gal., dry weight 10,500 lbs., freshwater capacity 40 gal., 30 gal. holding tank. Powered by twin 300 HP fresh-water cooled Mercury Cruiser 350 Mag Horizon gas engines. Cruise 23 knots. Maximum 32 knots. Repowered starboard engine 2007 and port engine 2010. Electronics include: Morse Electronic Control System with engine sync, Garmin 2010C color Chart Plotter/Fish Finder with 10" screen, BlueChart Mid Atlantic (incl. Canyons) Bathymetric Maps, Sitex Auto Pilot, Raymarine Pathfinder SL70 24nm range Radar, Flo Scan GPH Fuel Meter, Horizon VFH radio. Backup electronics include Furuno 1850FT Chartplotter/Fish Finder and Uniden VHF radio. Safety features include Rapid Fix 406 Epirb, Switlik hard-case, 4-person Rescue pod with cradle, Fireboy Automatic Fire Extinguisher System, Fireboy Gas Fume Detector, Safe-T-Alert Carbon Monoxide Alarm. Fishing features include Lee 19' outriggers, 10 rod rocket launchers, custom bait prep center with six drawer tackle box, custom 40 gal. live well, raw water and fresh water washdown, marlin door, large insulated fish box, recessed rod storage, spreader lights, windlass, teaser reels, SeaSpension pedestal seat mounts. Accommodations include complete galley – microwave, sink, stove and refrigerator, Corian style counter tops, convertible dinette, custom wood cabinetry, 12 volt/110v distribution center, 12volt power plug, private head with shower and electric toilet, macerator, forward double berth, indirect lighting, Blackmore AM/FM/CD/MP3 player with 5 Sony speakers, Aquamat carpeting, and lots of storage space.

Exclusions

Owner's personal belongings.

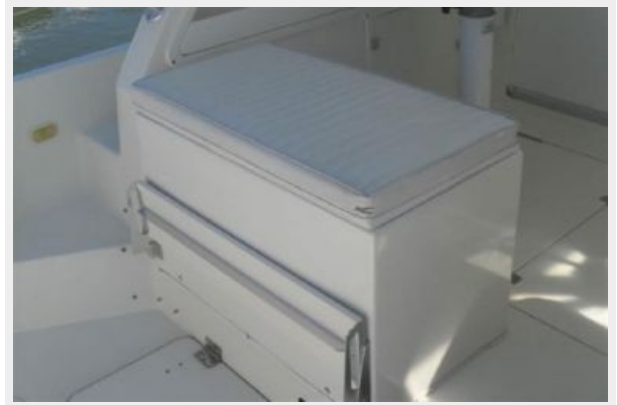
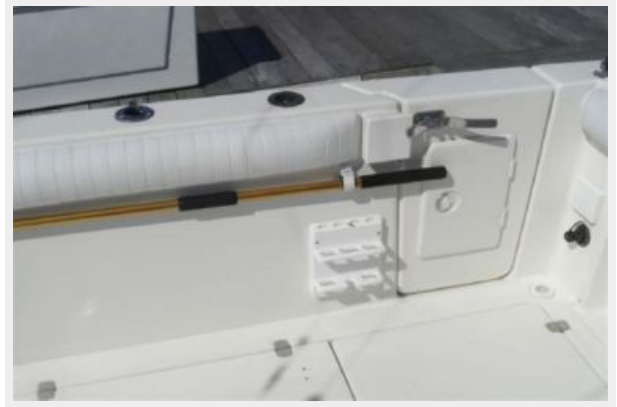
Disclaimer

The Company offers the details of this vessel or yacht in good faith but cannot guarantee or warrant the accuracy of this information nor warrant the condition of the vessel. A buyer should instruct his representatives, agents, or his surveyors, to investigate such details as the buyer desires validated. This vessel or yacht is offered subject to prior sale, price change, or withdrawal without notice.

PHOTOS



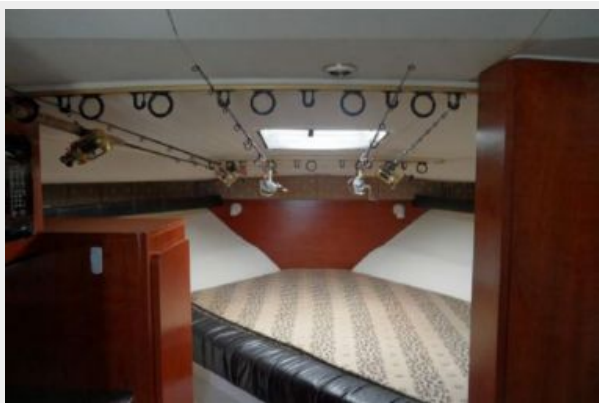


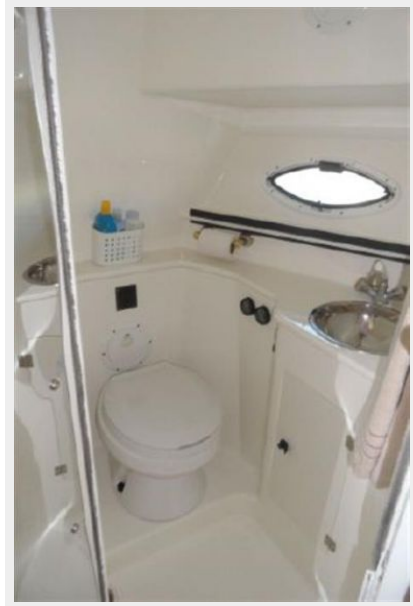


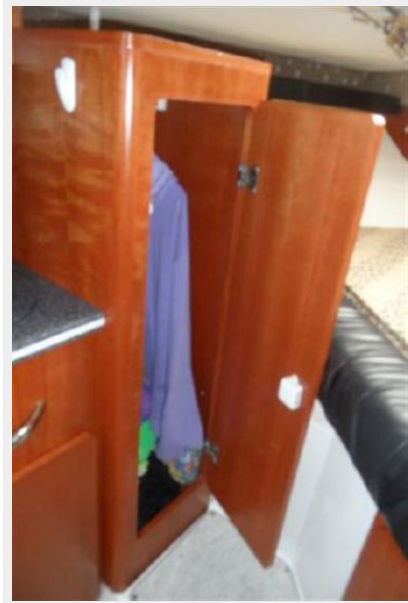


























CONTACTS

Andrey Shestakov, leading yacht broker of the sales department of Shestakov Yacht Sales Inc. Shestakov Yacht Sales Inc., the official representative of the Miami/Fort Lauderdale FL headquarters.

Contact details

Email: andrey@shestakovyachtsales.com

Web: shestakovyachtsales.com/en/

Telephones

USA: +1(954)274-4435

Office hours

Monday – Saturday: **9:00 - 21:00** EDT

Sunday: **closed**

Address



Harbour Towne Marina, 850 NE 3rd St,
STE 213, Dania, FL 33004