

## FOUR PLAY — RICKY SCARBOROUGH



**Builder:** RICKY SCARBOROUGH

**Year Built:** 1991

**Model:** Sport Fisherman

**Price:** PRICE ON APPLICATION

**Location:** United States

**LOA:** 36' 0" (10.97m)

**Beam:** 14' 0" (4.27m)

**Max Draft:** 3' 6" (1.07m)

**Cruise Speed:** 23 Kts. (26 MPH)

**Max Speed:** 26 Kts. (30 MPH)

Our experienced yacht broker, Andrey Shestakov, will help you choose and buy a yacht that best suits your needs **Four Play — RICKY SCARBOROUGH** from our catalogue. Presently, at Shestakov Yacht Sales Inc., we have a wide variety of yachts available on our sale's list. We also work in close contact with all the big yacht manufacturers from all over the world.

If you would like to buy a yacht **Four Play — RICKY SCARBOROUGH** or would like help answering any questions concerning purchasing, selling or chartering a yacht, please call **+1(954)274-4435**

---

# TABLE OF CONTENTS

---

TABLE OF CONTENTS	2
SPECIFICATIONS	3
Overview	3
Basic Information	3
Dimensions	3
Speed, Capacities and Weight	4
Accommodations	4
Hull and Deck Information	4
Engine Information	4
DETAILED INFORMATION	5
Accommodations	5
Electronics / Navigation	5
Electrical System	5
Engine and Mechanical Equipment	5
Deck	5
Exclusions	5
Exclusions	5
Disclaimer	6
PHOTOS	7
CONTACTS	18
Contact details	18
Telephones	18
Office hours	18
Address	18

# SPECIFICATIONS

---

## Overview

---

**MAJOR PRICE REDUCTION!!! WAS \$99,900.00 NOW \$68,500.00** New EZ2CY enclosure, Hull professionally repainted this year along with new tackle center. Plank on frame fiberglass hull. Spacious with upper and lower berths down below. Ensuite head with shower. Enclosed helm with Heritage tower (2001) and controls.

**Single 6V92 New in 2001. New Turbo 2013 Cruise 22-23 Knots @ 26 GPH.**

Electronics/Navigation MAIN HELM: Furuno 2007 Nav-Net w/10.5" color screen 6kw 4' open array radar 1kw blackbox sounder High speed fair block for sonar Northstar 952 GPS Simrad Auto Pilot AP25 w/over-sized steering pump (2006) Furuno 2k back up radar Furuno depth/fathom meter and temp (.01deg accuracy) ICOM VHF radio 3rd Garmin GPS/Plotter Custom Diesel Flowscan (2006) GPH @ cruise is 26 TOWER HELM: Furuno Nav-Net2 w/ 7.5 screen Back up Garmin 192 ICOM VHF radio Electrical: 30 amp dockside power Power cord Electric panel Volt meter 110 outlet 12 volt outlet Two 4D batteries One 4D starting battery Battery box Battery charger Battery switch New bonding system (2007) Rewired and new distribution panel (2006) Engine Mechanical: Bilge pump Bilge blower New tower steering station (2005) Solid cast rudder Dripless shaft ZF gear Turbocharged engine New fuel lines and valves (2006) New cast high performance rudder (2006) New steering ram, lines and controls run to tower (2005) Deck: Teak covering boards Lazzerratte storage Tackle center 130 lb fighting chair Brightwork completely stripped and refurbished (2007) Extra shaft and prop Pilothouse enclosure PRICE REDUCED \$30,000.00

## Basic Information

---

**Category:** Sport Fisherman

**Model Year:** 1991

**Year Built:** 1991

**Country:** United States

## Dimensions

---

**LOA:** 36' 0" (10.97m)

**Beam:** 14' 0" (4.27m)

**Max Draft:** 3' 6" (1.07m)

---

## Speed, Capacities and Weight

---

**Cruise Speed:** 23 Kts. (26 MPH)

**Max Speed:** 26 Kts. (30 MPH)

**Water Capacity:** 15 Gallons

**Holding Tank:** 5 Gallons

**Fuel Capacity:** 400 Gallons

---

## Accommodations

---

**Total Berths:** 2

---

## Hull and Deck Information

---

**Hull Material:** Fiberglass Over Wood

---

## Engine Information

---

**Engines:** 1

**Manufacturer:** Detroit Diesel

**Model:** 6V92

**Engine Type:** Inboard

**Fuel Type:** Diesel

---

## DETAILED INFORMATION

---

### Accommodations

---

Plank on frame fiberglass hull. Spacious with upper and lower berths down below. Ensuite head with shower. Enclosed helm with Heritage tower (2001) and controls.

### Electronics / Navigation

---

MAIN HELM: Furuno 2007 Nav-Net2 w/10.5" color screen 6kw 4' open array radar 1kw blackbox sounder High speed fair block for sonar Northstar 952 GPS Simrad Auto Pilot AP25 w/over-sized steering pump (2006) Furuno 2k back up radar Furuno depth/fathom meter and temp (.01deg accuracy) ICOM VHF radio TOWER HELM: Furuno Nav-Net2 w/ 7.5 screen Back up Garmin 192 ICOM VHF radio.

### Electrical System

---

30 amp dockside power Power cord Electric panel Volt meter 110 outlet 12 volt outlet Two 4D batteries One 4D starting battery Battery box Battery charger Battery switch New bonding system (2007) Rewired and new distribution panel (2006).

### Engine and Mechanical Equipment

---

Bilge pump Bilge blower New tower steering station (2005) Solid cast rudder Dripless shaft ZF gear Turbocharged engine New shaft log and dripless seal New fuel lines and valves (2006) New cast high performance rudder (2006) New steering ram, lines and controls run to tower (2005).

### Deck

---

Teak covering boards Lazzerratte storage Tackle center 130 lb fighting chair Brightwork completely stripped and refurbished (2007) Extra shaft and prop Pilothouse enclosure.

### Exclusions

---

Current owner's personal property.

### Exclusions

---

Owner's personal belongings.

## Disclaimer

---

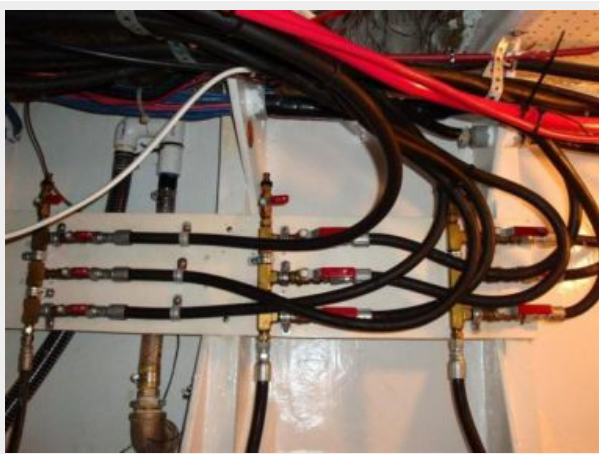
The Company offers the details of this vessel or yacht in good faith but cannot guarantee or warrant the accuracy of this information nor warrant the condition of the vessel. A buyer should instruct his representatives, agents, or his surveyors, to investigate such details as the buyer desires validated. This vessel or yacht is offered subject to prior sale, price change, or withdrawal without notice.

# PHOTOS





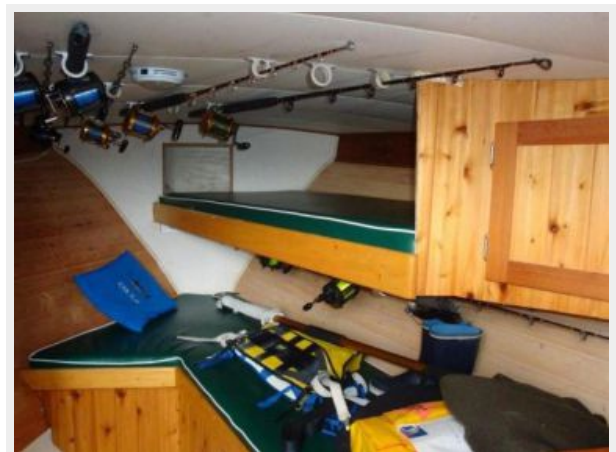


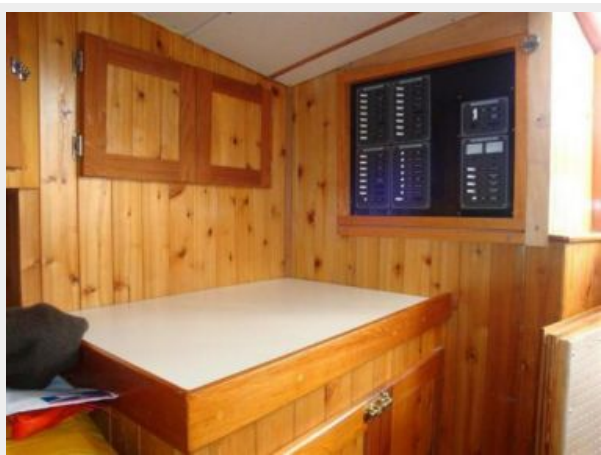




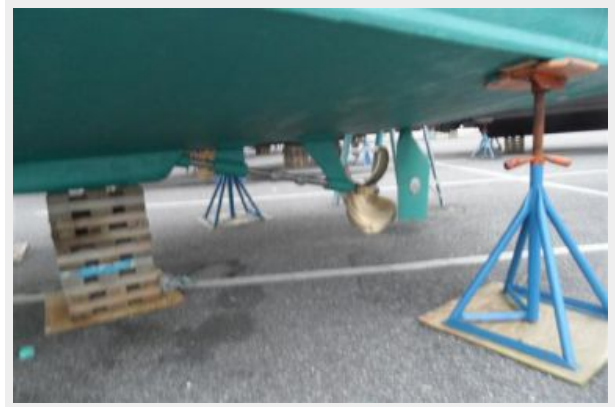
















# CONTACTS

---

Andrey Shestakov, leading yacht broker of the sales department of Shestakov Yacht Sales Inc. Shestakov Yacht Sales Inc., the official representative of the Miami/Fort Lauderdale FL headquarters.

## Contact details

---

Email: [andrey@shestakovyachtsales.com](mailto:andrey@shestakovyachtsales.com)

Web: [shestakovyachtsales.com/en/](http://shestakovyachtsales.com/en/)

## Telephones

---

USA: +1(954)274-4435

## Office hours

---

Monday – Saturday: **9:00 - 21:00** EDT

Sunday: **closed**

## Address

---



Harbour Towne Marina, 850 NE 3rd St,  
STE 213, Dania, FL 33004