

SWELL — BLUEGAME



Builder: BLUEGAME

Year Built: 2009

Model: High Performance

Price: PRICE ON APPLICATION

Location: China

LOA: 47' 0" (14.33m)

Beam: 14' 9" (4.50m)

Max Draft: 3' 9" (1.14m)

Cruise Speed: 32 Kts. (37 MPH)

Max Speed: 36 Kts. (41 MPH)

Our experienced yacht broker, Andrey Shestakov, will help you choose and buy a yacht that best suits your needs **Swell — BLUEGAME** from our catalogue. Presently, at Shestakov Yacht Sales Inc., we have a wide variety of yachts available on our sale's list. We also work in close contact with all the big yacht manufacturers from all over the world.

If you would like to buy a yacht **Swell — BLUEGAME** or would like help answering any questions concerning purchasing, selling or chartering a yacht, please call **+1(954)274-4435**

TABLE OF CONTENTS

| | |
|----------------------------------|----|
| TABLE OF CONTENTS | 2 |
| SPECIFICATIONS | 3 |
| Overview | 3 |
| Basic Information | 3 |
| Dimensions | 3 |
| Speed, Capacities and Weight | 4 |
| Accommodations | 4 |
| Hull and Deck Information | 4 |
| Engine Information | 4 |
| DETAILED INFORMATION | 5 |
| Yacht Introduction & Description | 5 |
| Accommodations | 5 |
| Audio & Visual Equipment | 5 |
| Galley | 5 |
| Electronics | 5 |
| Mechanical | 6 |
| Cockpit | 6 |
| Deck Equipment | 6 |
| Extra Options & Equipment | 6 |
| Exclusions | 6 |
| Disclaimer | 6 |
| PHOTOS | 7 |
| CONTACTS | 12 |
| Contact details | 12 |
| Telephones | 12 |
| Office hours | 12 |
| Address | 12 |

SPECIFICATIONS

Overview

Italian built motor yacht Bluegame 47 features a revolutionary and spacious deck area, with a large cockpit saloon and galley, fore and aft generous sun loungers, an accessible and large swimming platform with recessed gangway and swimming ladder and a safe walk around.

This yacht boasts a hull design with deep-V hull and the chine's particular downward angle provide one of the smoothest and driest rides of any boat of her range. The central positioned helm station gives a superb 360° view, for a safe ride or while mooring. The bow and stern areas of this motor yacht are designed for practical and safe operation. The design shows a stylish attention to detail combined with extreme functionality of every single component. Two cabins as well as further space aft can be used as an optional twin or crew cabin, or as an utility room for water sports activities. The large lower saloon provides comfortable seating for six people. This is a high performance yacht with the abilities to comfortably accommodate for cruising and overnighting. Perfect for long weekends exploring Hong Kong's islands and beaches Mooring available in Sai Kung area subject to sales agreement and terms and conditions

Basic Information

Category: High Performance

Model Year: 2009

Year Built: 2009

Country: China

Vessel Top: Hardtop W/Tower

Dimensions

LOA: 47' 0" (14.33m)

Beam: 14' 9" (4.50m)

Max Draft: 3' 9" (1.14m)

Speed, Capacities and Weight

Cruise Speed: 32 Kts. (37 MPH)

Cruise Speed Range: 300

Max Speed: 36 Kts. (41 MPH)

Water Capacity: 105 Gallons

Fuel Capacity: 588 Gallons

Accommodations

Total Cabins: 2

Total Berths: 6

Sleeps: 6

Total Heads: 2

Crew Cabin: 1

Crew Berths: 1

Crew Sleeps: 1

Crew Heads: 1

Hull and Deck Information

Hull Material: Fiberglass

Deck Material: Fiberglass Sandwich

Hull Color: Dark Grey

Engine Information

Engines: 2

Manufacturer: Cummins

Model: QSM 11

Engine Type: Inboard

Fuel Type: Diesel

DETAILED INFORMATION

Yacht Introduction & Description

Italian built motor yacht Bluegame 47 features a revolutionary and spacious deck area, with a large cockpit saloon and galley, fore and aft generous sun loungers, an accessible and large swimming platform with recessed gangway and swimming ladder and a safe walk around.

This yacht boasts a hull design with deep-V hull and the chine's particular downward angle provide one of the smoothest and driest rides of any boat of her range. The central positioned helm station gives a superb 360° view, for a safe ride or while mooring. The bow and stern areas of this motor yacht are designed for practical and safe operation. The design shows a stylish attention to detail combined with extreme functionality of every single component. Two cabins as well as further space aft can be used as an optional twin or crew cabin, or as an utility room for water sports activities. The large lower saloon provides comfortable seating for six people. This is a high performance yacht with the abilities to comfortably accommodate for cruising and overnighting. Perfect for long weekends exploring Hong Kong's islands and beaches Mooring available in Sai Kung area subject to sales agreement and terms and conditions

Accommodations

Convertible sofa in fore-peak converts to a double bed Twin singles in guest cabin Head with shower Stern area of the yacht offers a separate crew cabin with ensuite shower and head

Audio & Visual Equipment

2 x LCD televisions, 1 inside and 1 in the cockpit 4 x CD/DVD/IPOD players 14 x BOSE speaker and Fusion sound system all around

Galley

Rex Electrolux microwave and convection oven Whirlpool x2 electric induction hob burners Espresso coffee machine built in x2 60 litre fridges - one in the galley and one in the cockpit Double sink

Electronics

Bowthrusters Raymarine ST7002 Autopilot Raymarine chartplotter screen with video camera in engine room Raymarine VHF radio Raymarine ST60 + tridata - depth, speed, trip Compass

Mechanical

Twin Cummin QSM 11 diesels, 715hp with 4 blade Nibral propellers Kohler Gen Set 9.5k Desalinator Electronic battery charger Automatic/manual bilge system with level alarms Automatic/manual fresh, gray and black water system with level alarm Electric sea water pump for washing, with bow/stem outlets Automatic/manual engine room fire-fighting system Manual Fuel emergency shut-off system

Cockpit

Ice maker Built in electrical outdoor BBQ All outdoor sun lounge and seat cushions

Deck Equipment

Fully equipped flybridge with double commands Tender davit 2x exterior search lights Underwater swim lights 2 electrical winches Stainless steel 25 Kg anchor and 65 mt. 10 mm. + 5 mt s/s chain 240V shore power supply plug Retractable electro-hydraulic gangway Retractable manual swimming ladder in stainless steel Stainless steel electric anchor windlass Windlass remote control with chain counter

Extra Options & Equipment

Teak on deck surface Hull customized colour Water pressure system Acoustic signals 24V Navigation lights and anchor lights, led lighting Hot water boiler 40 litres External/internal pillows Internal dinette cushions Cockpit shower with hot/cold water mixer Saloon and cabin air conditioning Walk-around courtesy line-silicon led lighting Hydraulic trim tabs system and controls Hydraulic power assisted steering unit Console covering

Exclusions

Owner's personal belongings.

Disclaimer

The Company offers the details of this vessel or yacht in good faith but cannot guarantee or warrant the accuracy of this information nor warrant the condition of the vessel. A buyer should instruct his representatives, agents, or his surveyors, to investigate such details as the buyer desires validated. This vessel or yacht is offered subject to prior sale, price change, or withdrawal without notice.

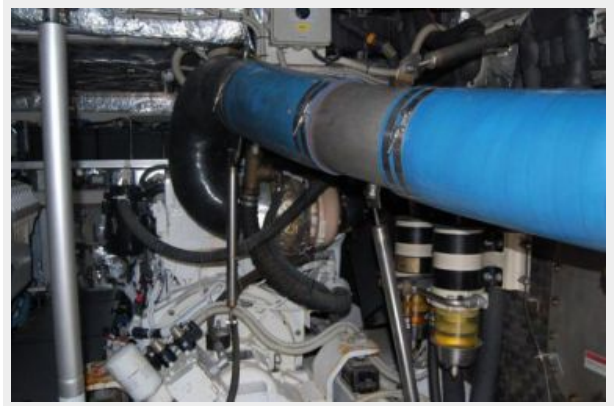
PHOTOS











CONTACTS

Andrey Shestakov, leading yacht broker of the sales department of Shestakov Yacht Sales Inc. Shestakov Yacht Sales Inc., the official representative of the Miami/Fort Lauderdale FL headquarters.

Contact details

Email: andrey@shestakovyachtsales.com

Web: shestakovyachtsales.com/en/

Telephones

USA: +1(954)274-4435

Office hours

Monday – Saturday: **9:00 - 21:00** EDT

Sunday: **closed**

Address



Harbour Towne Marina, 850 NE 3rd St,
STE 213, Dania, FL 33004