

ZINGALA — NAUTOR'S SWAN



Builder: [NAUTOR'S SWAN](#)

Year Built: 2003

Model: Cruising/Racing Sailboat

Price: PRICE ON APPLICATION

Location: United Kingdom

LOA: 56' 4" (17.17m)

Beam: 15' 6" (4.72m)

Min Draft: 11' 0" (3.35m)

Cruise Speed: 7 Kts. (8 MPH)

Max Speed: 9 Kts. (10 MPH)

Our experienced yacht broker, Andrey Shestakov, will help you choose and buy a yacht that best suits your needs ZINGALA — NAUTOR'S SWAN from our catalogue. Presently, at Shestakov Yacht Sales Inc., we have a wide variety of yachts available on our sale's list. We also work in close contact with all the big yacht manufacturers from all over the world.

If you would like to buy a yacht ZINGALA — NAUTOR'S SWAN or would like help answering any questions concerning purchasing, selling or chartering a yacht, please call +1(954)274-4435

TABLE OF CONTENTS

TABLE OF CONTENTS	2
SPECIFICATIONS	3
Overview	3
Basic Information	3
Dimensions	3
Speed, Capacities and Weight	3
Accommodations	3
Hull and Deck Information	4
Engine Information	4
DETAILED INFORMATION	5
SPECIFICATION	5
Exclusions	16
Disclaimer	16
PHOTOS	17
CONTACTS	24
Contact details	24
Telephones	24
Office hours	24
Address	24

SPECIFICATIONS

Overview

Exceptional example of her class, a Regatta Swan with deep keel and tall carbon spar. Comes with all the go faster Kit from North as well as the whole cruising kaboodle. Also has nice blue hull.

Basic Information

Category: Cruising/Racing Sailboat

Sub Category: Cruising Sailboat

Model Year: 2003

Year Built: 2003

Country: United Kingdom

Dimensions

LOA: 56' 4" (17.17m)

LWL: 48' 8" (14.83m)

Beam: 15' 6" (4.72m)

Min Draft: 11' 0" (3.35m)

Speed, Capacities and Weight

Cruise Speed: 7 Kts. (8 MPH)

Max Speed: 9 Kts. (10 MPH)

Displacement: 39683.20716 Pounds

Water Capacity: 300 Gallons

Fuel Capacity: 150 Gallons

Accommodations

Total Cabins: 4

Total Berths: 8

Total Heads: 2

Hull and Deck Information

Hull Material: GRP

Deck Material: Teak

Hull Color: Flag Blue

Hull Designer: German Frers

Engine Information

Manufacturer: Yanmar

Model: 4JH3-HTBE73

Fuel Type: Diesel

DETAILED INFORMATION

SPECIFICATION

Construction:

RCD Status: The yacht conforms with the essential safety requirements of Directive 94/25EC (Recreational Craft Directive) and is categorised A – “Ocean”

Hull, Superstructure Construction:

- Coloured topsides, gelcoat NGA 7344, flag blue (instead of standard white)
- Colour of hull stripes, gelcoat NGA 9650 white (instead of standard blue)
- Cove stripe, gold coloured with clear varnish on top
- Name and homeport on transom
- Planks laminated into the hull in lazarette, one on port side and two on aft bulkhead

Deck

- Teak on side decks, centreline recess, on coaming tops forward and aft, on each side of the main entrance, nominal thickness 9 mm Teak toerail instead of aluminium, including open roller fairleads forward, amidships and aft Removable teak support, angled compact teak on floorboard forward of steering wheel on the centreline Standard anchor windlass to be easily removable with SS cover plate and quick connectors for cables Winches, power pack, windlass
- Aft cockpit 25 cm shorter, to give more space at the entrance in the aft cabin Recess in coamings aft for secondary winches

Keel & Rudder:

- Racing keel, draft 3,4 m instead of standard 2,7 m

Machinery:

Engine & Gearboxes:

- Engine Yanmar 4JH3HTBE73.6 kW 100 HP at 3800 rpm

Maintenance & Performance:

- Range under power 600 nm, or 86 hours at 7 knots. Top speed 8.9 knots

Propulsion & Steering:

- MaxProp 2-bladed 48 Propulsion
- Large diameter wheel
- Cable steering system on quadrant

Electrical Systems:*Battery Banks:*

- Domestic Service battery capacity 522 Ah gelcell replaced 2009 (instead of standard 348 Ah)
- starting battery 12 V 135 Ah

Battery Chargers:

- Mastervolt Automatic charger

Alternators:

- 1 x engine Alternator
- 1 x high output Alternator for charging

Generator:

- Westerbeke 6/8KVV

Shore Power:

- 230Volt ring main with sockets
- Shore lead

Other Electrical:

- Inverter, Mastervolt Mass Sine 24/2500 VA, 230 V

Plumbing Systems:

Fresh Water & Water Heating System:

- 24 V pressurised hot and cold water system throughout
- Deck shower , hot and cold
- Drinking water purifier
- Fresh and saltwater pumps in the galley

Watermaker:

- Water maker Spectra Newport 400, 230V, including: -Automatic Salinity control & Automatic Fresh Water Backflush - remote control panel MPC3000 (unused in this ownership)

Bilge Pumps:

- 2 Submersible electric bilge pump, manual and automatic control

Grey & Black Water:

- 2 x grey water tanks
- 2 x black water tanks

Tankage:

Fuel:

- 150ltr (33 gallons) in three tanks

Fresh water:

- 300 ltr (66 gallons) in three tanks
- Hot water calorifier 40 lt
- Deck wash connected and deck shower

Navigation Equipment:

Instruments

- Voltage stabilizer for instruments, incl. 2 x 12 V 10 A batteries
- B&G Hercules 2000 racing Pack 890- PK- 1 including: - 2 x FFD displays at nav. station - Wind/depth/log processor - Performance processor - Masthead Unit 1450 mm - Halcyon 2000 fluxgate compass - Speed, depth sensors - Through hull housings, 2 pieces - Mast cable and bracket - Mast base Junction Box - Handbook and Instructions -Water temp sensor 2 x Non NMEA FFD's, 890-PK-12 (in cockpit 1 x Non NMEA FFD, 890-PK-12 (in aft cabin) 3 x 20/20 digital displays, 332-PK-12 3 x display controller pack, 302-00-007 Loadcell system 1" pin Barometric Pressure Sensor 1 x analogue boat speed indicator above aft entrance 1 x analogue 360' wind direction indicator above aft entrance 1 x analogue magnified wind direction indicator above aft entrance 1 x analogue wind speed indicator above aft entrance Converter
- Furuno plotter/radar navstation
- Furuno plotter radar cockpit
- George Jensen Clock , Barometer, thermometer

Autopilot

- Autopilot, B&G, Hercules Pilot, 890-PK-ACP 2, Hydraulic, with RAM-T3-24V

In cockpit:

- VHF, Shipmate RS 8400, DSC controller and dual kit RS 8422, and GRP box in cockpit for second handset

At chart table:

- Furuno Navnet weather FAX-30, connected to Delta antenna GPS, Leica apMK12 at nav station, with MX420 DGPS antenna mounted on radar post on aft deck

Communications Equipment:

- Iridium marine phone, Sailor SC4000 with one handset at nav. station and antenna on radar post GSM triple band,
- Ericsson F2412, black box cellular terminal, with wireless DECT phone Panasonic KX-TCD 705, connected to Shakespeare antenna, computer and wireless
- DECT phone at navigation station SSB,
- Icom M-802 including antenna coupler AT-140 and converter PV24I, mounted at chart table Grounding cage in lazarette for SSB radio telephone Aerials
- TV Sharp LC20E1E LCD 20", installed on port side in saloon Information
- Nautor supplied and installed computer system, Dell OptiPlex SX260, including: - Intel Pentium 4 processor, 2,8 GHz -512 Kt -512 Mt, 266 Mhz DDR SDRAM - Microsoft Windows XP - Dell 1504FP -15" Flat screen - Cordless keyboard, Freeboard SPR 8696WT Maxsea software for computer, not in date
- Active antenna, Delta DSC Atlantic in mast top, including Windex with light Shakespeare 5412-S, 900/1800/1900MHz cellular antenna Insulated backstay, Hall Spars Additional Sailor Iridium SC4000 antenna for racing, including clip to attach on pushpit

Domestic Equipment:

Galley:

- Additional refrigeration unit, Iceberg, 230 V, 0,5 hp, 50/60 Hz refrigeration
- Additional refrigeration unit, Iceberg, 230 V, 0,5 hp, 50/60 Hz
- Microwave oven in galley, Siemens, 230 V, stainless steel
- Water boiler, Quooker ST, 800 W, 230 V, installed in galley
- Force 10 stainless 4 burner stove

Heads/Showers:

- Stainless mixer taps with separate mixer taps and riser bar on showers
- 2 x Sealand Vacuflush heads new 2007
- Shower curtains
- Teak gratings in heads

Heating & Ventilation:

- Hatches and windows Nautor made hatches, acrylic, flush mounted with GRP inner frames, (mosquito screens and blinds): 60 x 60 cm, 2 pcs., one for fo'c'sle, and one for main cabin 50 x 36 cm, 2 pcs. for forward cabins 36 x 25 cm, 2 pcs. one for forward toilet and one for the passage
- Cabin heater, Eberspächer D7W, 24 V, 3 fan units, outflow in all cabins, toilets and in oilskin locker
- Dorades on foredeck with stainless deck plates for removable covers.
- Hella Turbo fans throughout

Entertainment:

- Bose Lifestyle 28 stereo system in saloon: - radio/DVD/CD surround sound speakers, 5 pcs. - subwoofer built into main saloon table base Loudspeakers for aft and forward cabins, Poly-Planar MA- 905 CD changer, Sony CDP- CE375, 5 disc, installed in saloon, to work with Bose Lifestyle system Loudspeakers, Bose 131, in cockpit, one pair Bose Lifestyle SA -1 stereo amplifier, Bose RC28S remote control and 3- way loudspeaker switch for loudspeakers in forward and aft cabins and cockpit.

Lighting:

- 24V deck head and reading lights throughout
- Cabin light dimmer in aft cabin Additional bulkhead lights on forward bulkhead in aft cabin

Accommodation:

Summary of Accommodation:

- Eight Berths in four cabins
- Finished in Satin varnished solid teak and teak veneered bulk heads with a teak and holly sole. Saloon upholstered in soft leather Lapuan Nahka and soft blue fabric in the cabins.
- Curtains for side windows. Lee cloths on both starboard and port side in saloon, and for port side settee in aft cabin lee cloths for all berths. Corian Cameo white in galley and on the counter tops in heads, Kroon locks, chrome, mat polished, for all locker doors and drawers, mosquito screens and blinds, teak framed with rubber list around, for Floorboard cover, transparent PVC sheet, 3 mm thick for main saloon, galley and navigation passageway Padded cover for saloon table Leather for saloon sofas, navigation seat and for sofa in aft cabin, Lapuan Nahka Venice Crew covers for saloon settees and navigation seat, Lauritzon Soft Cotton 118 Pipe cot on port side in fo'c'sle, incl. 2" mattress

Description of layout from forwards:

Forward Cabin:

- Outboard lockers to port and starboard side in fo'c'sle, foot step on sail bin in fo'c'sle and pipe cot in fo'c'sle to starboard.
- Two forward cabins with upper and lower berths (lockers outboard, upper berths removable bulkhead between the two cabins forward, incl. doorframes in port and SB cabin.
- Port side cabin with cupboards outboard.
- Starboard cabin with cupboards outboard hanging locker and ensuite door to forward heads.

Main Saloon:

- Bench seating to port cupboards outboard with a roll top door in front of 20" LCD screen on port side in saloon, saloon table, divided in two, veneer emanating from the centre out to the corners of the table, thin Corian inset boarder around Removable pipe berth on port side in saloon, incl. 2" mattress three Swan chairs in saloon. Glass display on front bulkhead in saloon, incl. light Cyupboards and shelving outboard on starboard.

Galley:

- Companionway galley leading aft on the port side, in teak with white corian surfaces. Top and front opening refrigeration, force 10 cooker, Qooker hot water, stainless microwave, twin stainless sinks and extractor fan.

Navigation Station

- Aft of the saloon on the starboard side a large forward facing nav station, housing instruments with additional chart stowage above. AC and DC panel located above engine bay to the left of the chart table.

Heads:

- Aft heads to starboard finished in white moulded GRP and teak. Stainless mixer taps on both sink and shower, Teak grating and shower curtain.
- Forward heads to starboard finished in white moulded GRP and teak. Stainless mixer taps on both sink and shower, Teak grating and shower curtain.

Owners Cabin/Main cabin

- Centre line double berth with ample stowage both in hanging lockers and cupboards to port and starboard. Stainless and teak ladder gaining access to companionway hatch to aft cockpit.

Deck Equipment:

Rig:

- White painted Hall Spars Carbon Fibre mast (High Modulus), boom, spinnaker and jockey pole, running and standing rigging, running rigging replaced 2009 and full rig check carried out, instead of standard aluminium rig furling headsail, manual, Reckmann RS 2000/40, including blocks and jammer
- Navtec System 50 panel with 2speed pump instead of standard
- Fittings for running rigging
- Blocks and clutch for furling line on port side
- Additional foot blocks both sides for secondary winches
- Additional blocks 2 x H1972 and jammers 2 x XX0812 on coaming between footblock and primary winch (possibility to take the spinnaker sheet to the primary winch)
- Tubes in coaming for internal fore guy, asymmetric tack line, staysail halyard/topping lift and genoa car pullers

Winches:

- Primary winches, 2 x Lewmar 77/3 AOR connected to white painted carbon fibre pedestal (angled forward, not a complete unit), instead of standard Lewmar 77/3 SST Secondary winches
 - 2 x Lewmar 66 AEST, instead of standard Lewmar 2 x 54 CST Main sheet winches
 - 2 x Lewmar 58 AST, instead of standard 1 x Lewmar 54 CST Traveller control winches
 - 2 x Lewmar 40 AST, instead of standard 1 x Lewmar 40 CST and 2 x Spinlock XC/1
- Additional winches both sides of main entrance hatch,
- 1 x Lewmar 48 AST on port side for car puller, foreguy and topping lift/staysail,
 - 1 x Lewmar 48 AST on starboard side for car puller and tack line Main halyard winch,
 - Lewmar 48 AEST instead of standard Lewmar 48 CST, aft on starboard side.
 - Winch motor to covered by teak frame in the saloon overhead. Halyard winch
 - 1 x Lewmar 48 AST at mast, instead of standard 1 x Lewmar 48 CST Halyard winches
 - 2 x Lewmar 54 AST at mast, instead of standard Lewmar 54 CST

Sails:

- IG = 21.72 m 71.26 ft Fore triangle 67.4 m² 725.9 sq.ft J = 6.21 m 20.37 ft Mainsail 92.7 m²

997.5 sq.ft P = 23.01 m 75.49 ft 150% genoa 101.2 m² 1088 sq.ft E = 8.055 m 26.43 ft Spinnaker
243 m² 2613 sq.ft

· North Sails :

Cruising pack 2003 Spectra FB main

Spectra staysail

Trysail new 2009

Gennaker & snuffer

New furling genoa 2007

Racing package 2003

3DL Main Tired

3DL Light #1 – training sail (or very tired)

3DL Heavy #1 – training sail

3DL #2 – training sail 3DL #3 – training sail

3DL #4 tired

· 0.5oz spinnaker .75oz spinnaker 1.5oz spinnaker

General:

- Bracket on pushpit for outboard engine
- Bimini frame over helm position
- Drop down transom with teak and stainless boarding/swim ladders
- Modified wider compass crashbar and black anodized aluminium brackets
- White painted carbon post for radar scanner, mounted through aft deck, with quick connection Two separate arms on radar post for Leica GPS antenna and Iridium antenna
Stainless steel protection for two cockpit speakers
- Mooring cleats, pop-up type, Versari & Delmonte, one pair midships, one pair aft and one pair forward (instead of standard cleats) Modified pulpit
- Mug holder on pedestal

Anchoring & Mooring Equipment:

- Lewmar windlass
- CQR 60lb and chain
- Double removable anchor rollers on stemhead, including bow mounted loop for asymmetric spinnaker block
- Fenders and warps

Covers, Canvas & Cushions:

- Cockpit upholstery, 45 mm for forward cockpit and helmsman's seat, 65 mm for main cockpit seats, Sunbrella white/blue stripes, no backrests
- Padded stowage bags for both cockpit tables,
- Enclosed forward and aft cockpit canopies in white 2009 by Sanders.

Safety Equipment:

- Lifeguard 8 man life raft in valise(not in date)
- Jon buoy MOB recovery units x 2(not in date)
- Jon Bouy Danbuoy x 1(not in date)
- Kim MOB safety ladder
- Assorted lifejackets (not in date)

Fire-fighting equipment:

- 4 x fire extinguishers(not in date)
- 1 x engine fire extinguisher with remote pull(not in date)
- Gas alarm
- Gas solenoid

Brokers Comments:

ZINGALA is probably the most highly spec'd SWAN 56' to leave the Nautor Swan yard. She has a carbon spa, recessed Rondal hatches, removable bulkhead to put her into race mode and many, many updates to the standard specification. She has been considerably uplifted in this ownership and is being offered for sale as her owner lacks the time to use her to her potential. She is the ultimate cruiser/racer of her size.

NOT INCLUDED IN SALE

Personal effects, including, personal tools, cutlery, crockery, glassware

Exclusions

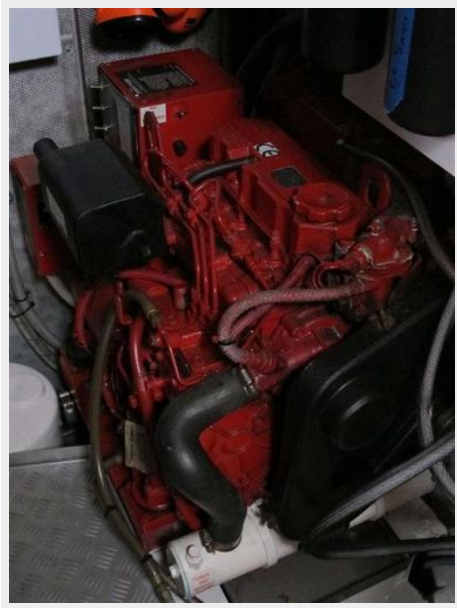
Owner's personal belongings.

Disclaimer

The Company offers the details of this vessel or yacht in good faith but cannot guarantee or warrant the accuracy of this information nor warrant the condition of the vessel. A buyer should instruct his representatives, agents, or his surveyors, to investigate such details as the buyer desires validated. This vessel or yacht is offered subject to prior sale, price change, or withdrawal without notice.

PHOTOS



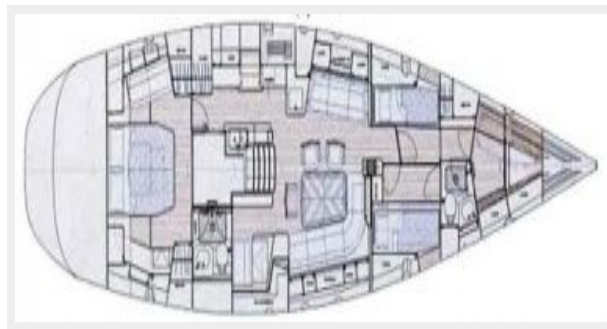












CONTACTS

Andrey Shestakov, leading yacht broker of the sales department of Shestakov Yacht Sales Inc. Shestakov Yacht Sales Inc., the official representative of the Miami/Fort Lauderdale FL headquarters.

Contact details

Email: andrey@shestakovyachtsales.com

Web: shestakovyachtsales.com/en/

Telephones

USA: +1(954)274-4435

Office hours

Monday – Saturday: **9:00 - 21:00** EDT

Sunday: **closed**

Address



Harbour Towne Marina, 850 NE 3rd St,
STE 213, Dania, FL 33004